



# Sony Alpha A3000 Built-in flash Replacement

Removal of the built-in flash device.

Written By: Leonard Holloman



---

## INTRODUCTION

This guide shows how to remove the build-in flash of the camera from its compartment. You will need a soldering tool to detach the cables connecting the flash to the camera.

---

### TOOLS:

- [Phillips #000 Screwdriver](#) (1)
  - [Soldering Iron](#) (1)
-

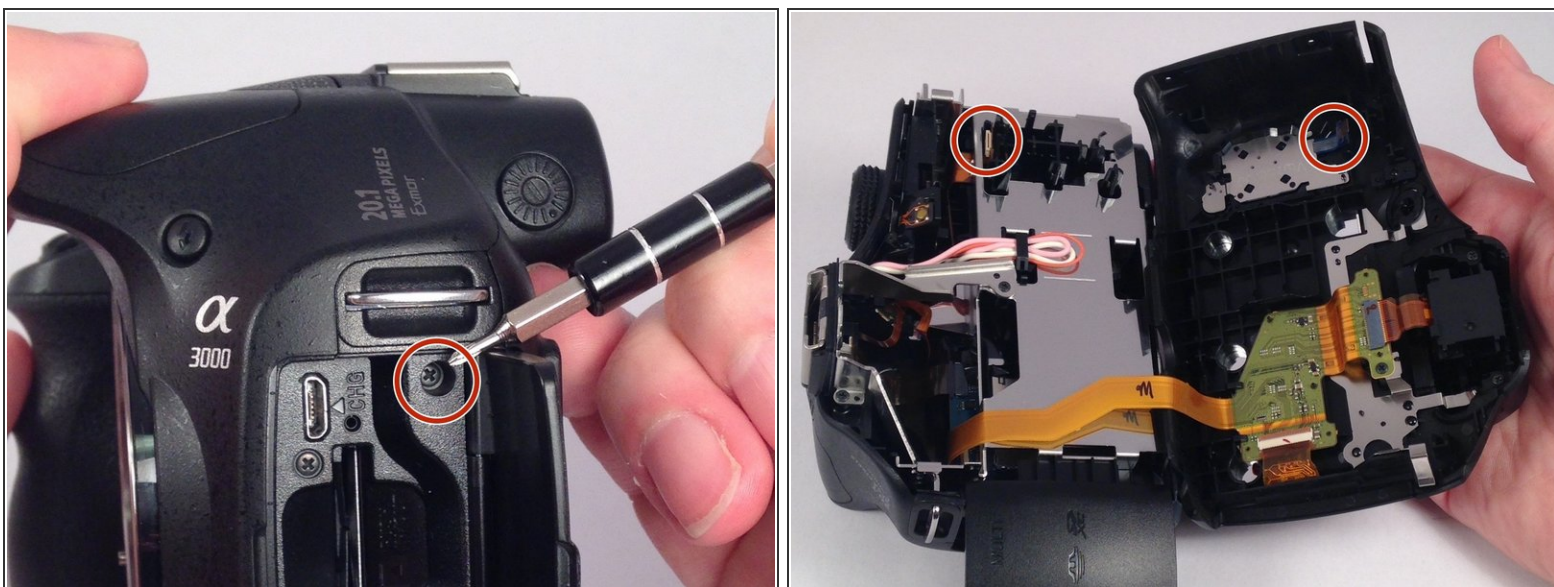
## Step 1 — Rear Case



- Remove the seven highlighted screws shown here.

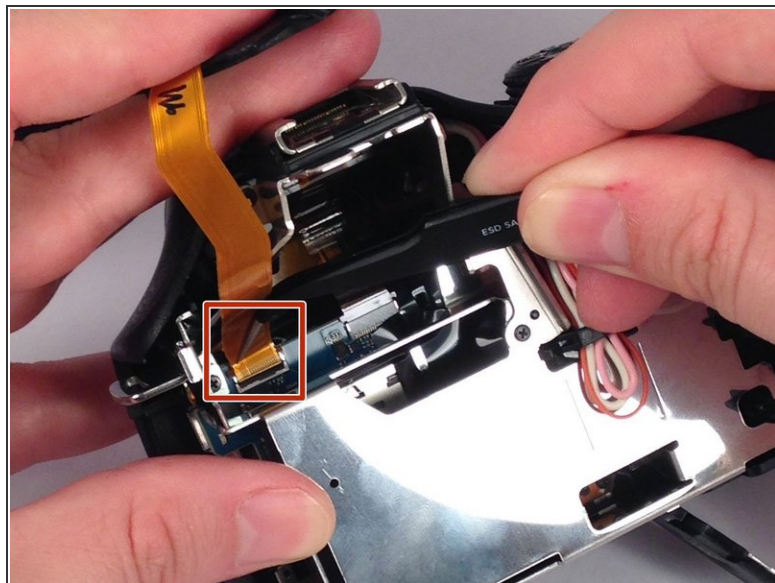
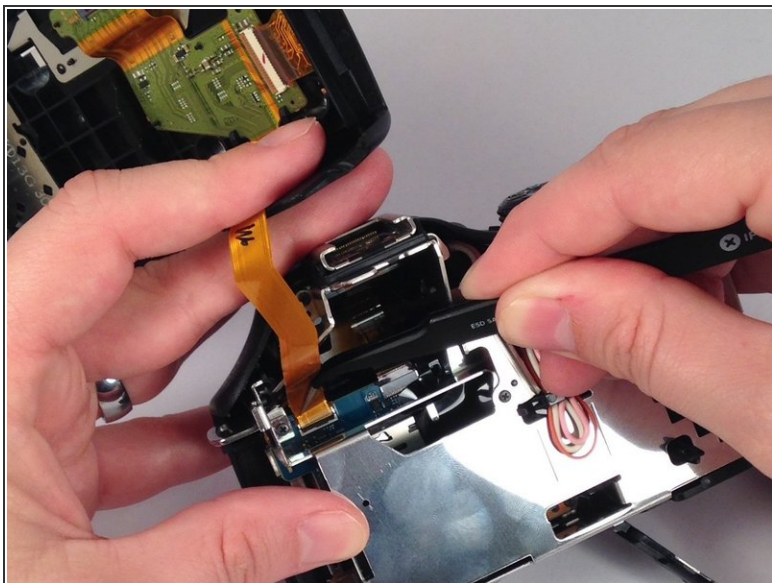
⚠ Screws are teeny tiny, don't lose them!

## Step 2



- Remove this final screw from the memory card compartment.
  - Remove the chassis by pulling the back cover away from the camera.
- ⚠ Be careful not to damage any of the delicate ribbon cables when removing the chassis.

### Step 3



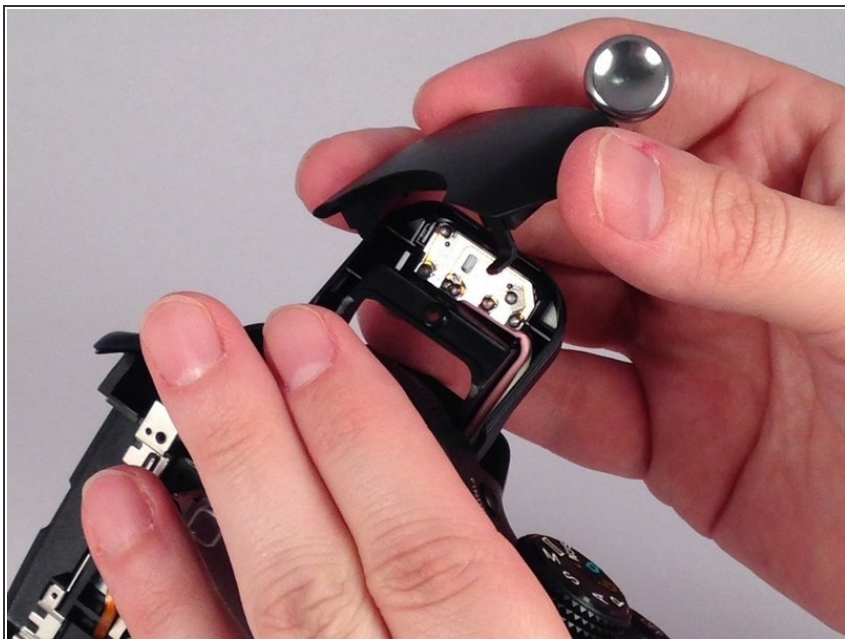
- Gently but forcefully lift up on the parallel cable connecting the two halves of the camera.

### Step 4 — Built-in flash



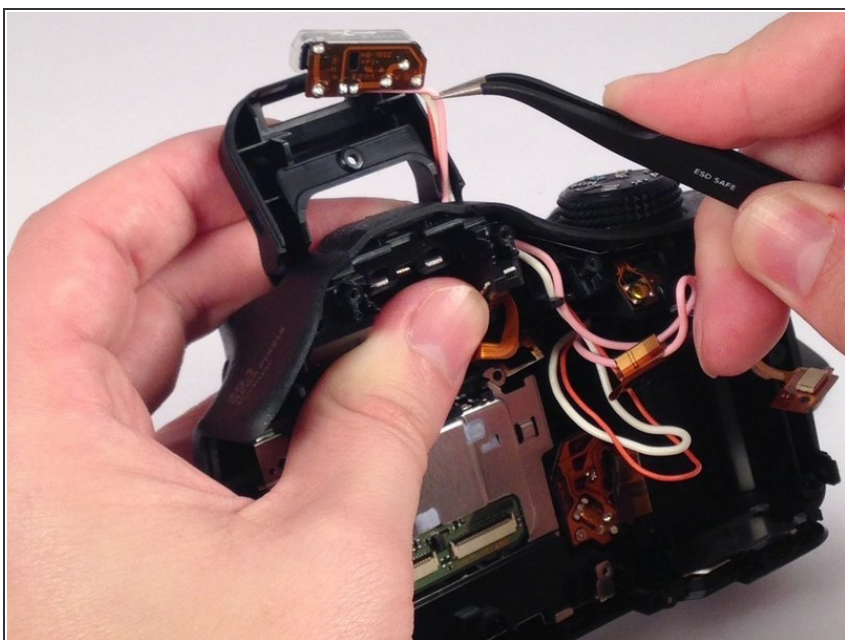
- Remove the single screw from the bottom of the flash device.

## Step 5



- Remove the flash cover by gently pulling it in an outward direction.

## Step 6



- Use a soldering tool to remove the three wires connecting the flash to the camera.

To reassemble your device, follow these instructions in reverse order.