



# Rear Case Replacement

Instructions for accessing the internal components of the Alpha A3000.

Written By: Leonard Holloman



---

## INTRODUCTION

This is a guide for accessing the internal workings of the camera. Before following these instructions make sure the proper replacement parts are available.

---



### TOOLS:

- [Phillips #000 Screwdriver](#) (1)
  - [Tweezers](#) (1)
-

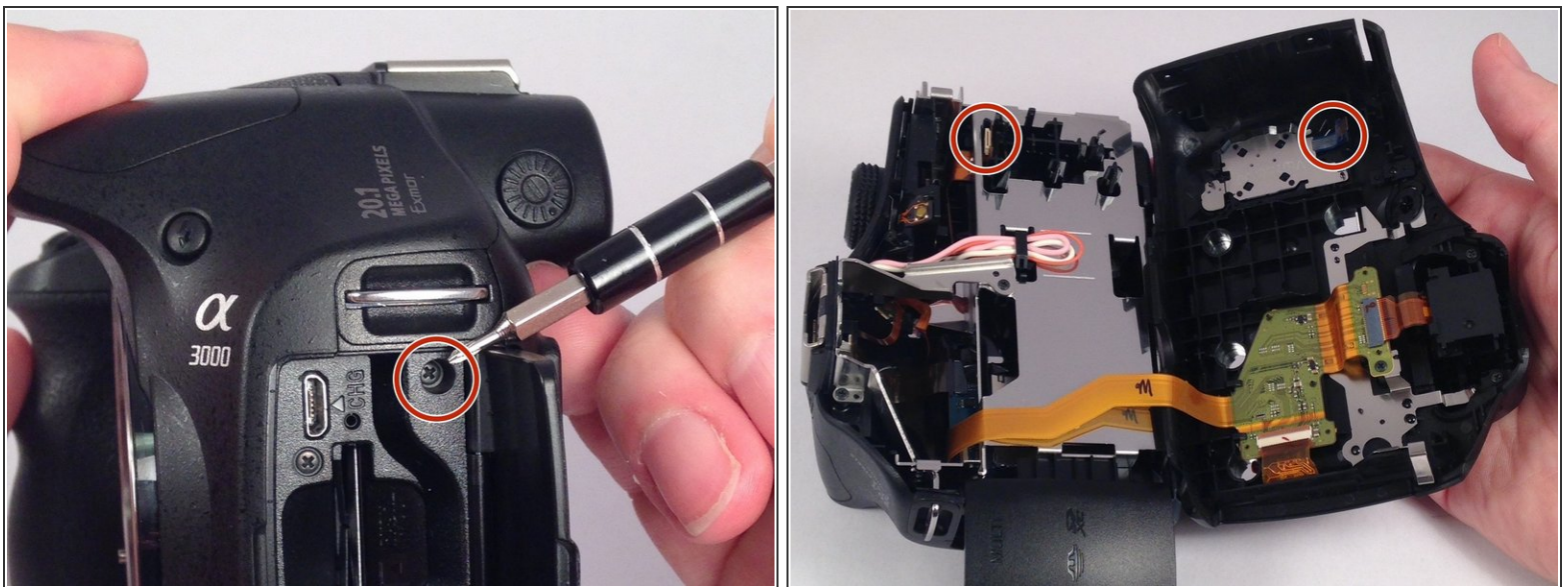
## Step 1 — Rear Case



- Remove the seven highlighted screws shown here.

⚠ Screws are teeny tiny, don't lose them!

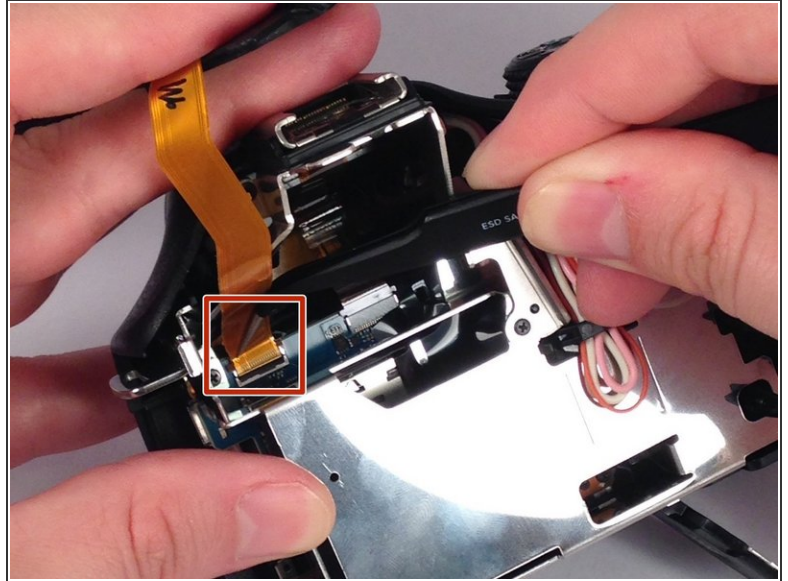
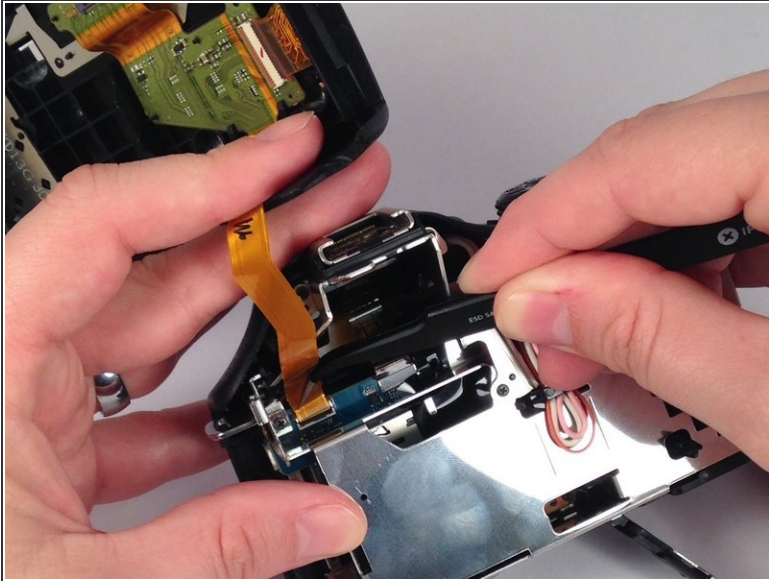
## Step 2



- Remove this final screw from the memory card compartment.
  - Remove the chassis by pulling the back cover away from the camera.
- ⚠ Be careful not to damage any of the delicate ribbon cables when removing the chassis.



### Step 3



- Gently but forcefully lift up on the parallel cable connecting the two halves of the camera.