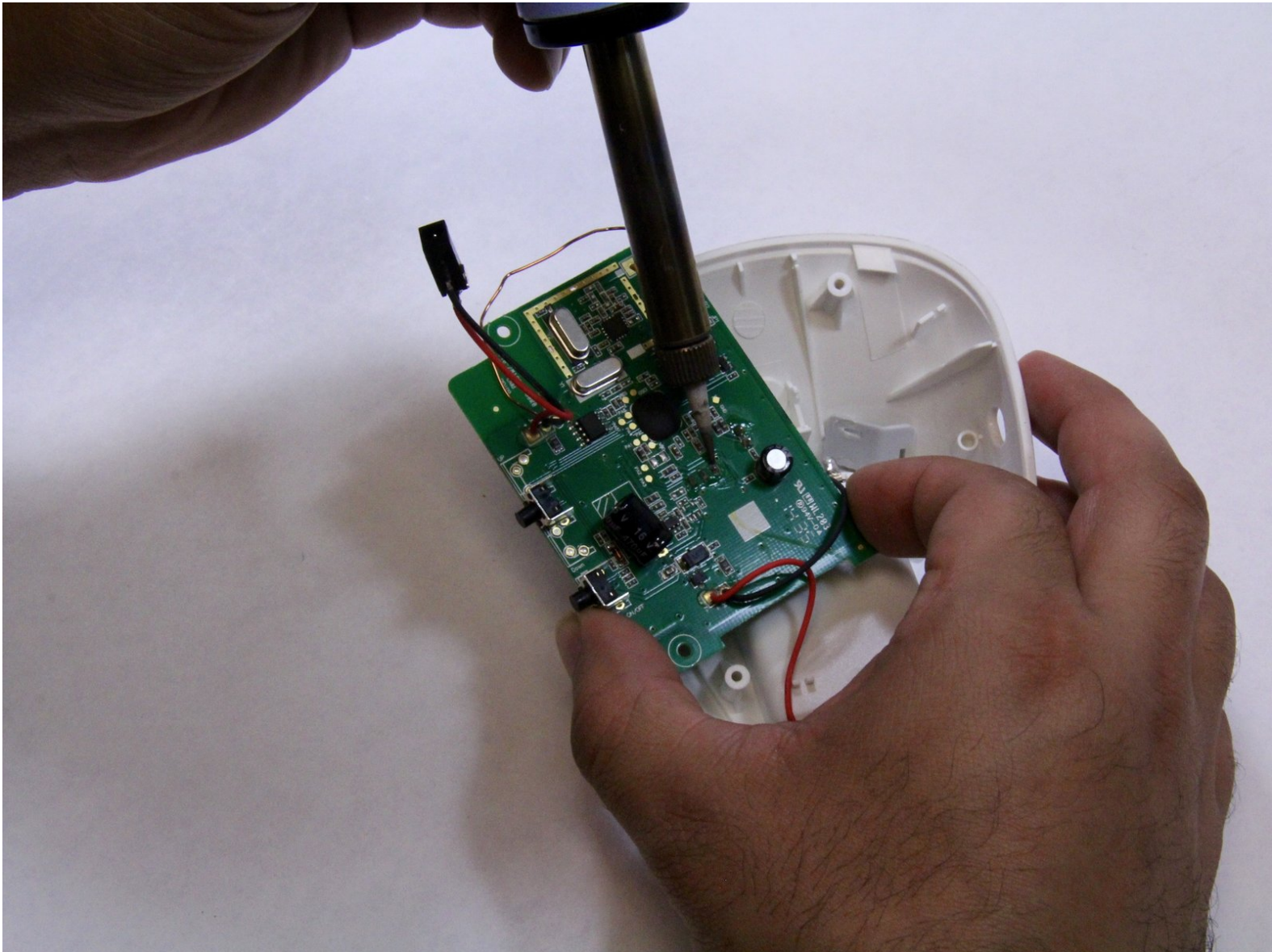




Graco Secure Coverage LED Nursery Unit Replacement

Replace the LED on your Graco Secure Coverage Digital Baby Monitor for nursery unit.

Written By: Bryson Wolff



INTRODUCTION

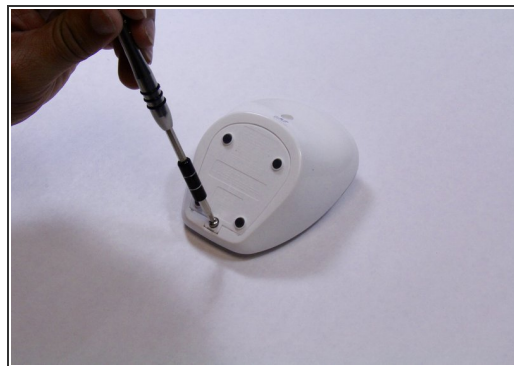
Use this guide to replace the LED on your Graco Secure Coverage Digital Baby Monitor for nursery unit.

The LED replacement includes the LED and battery replacement.

TOOLS:

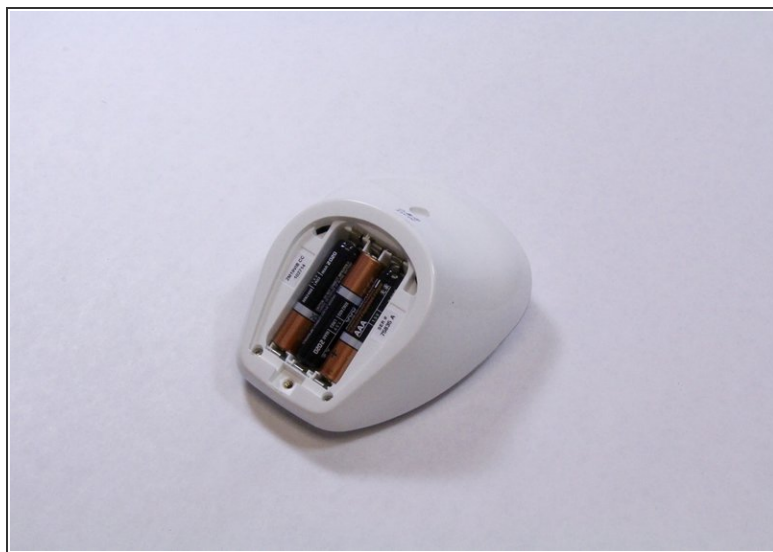
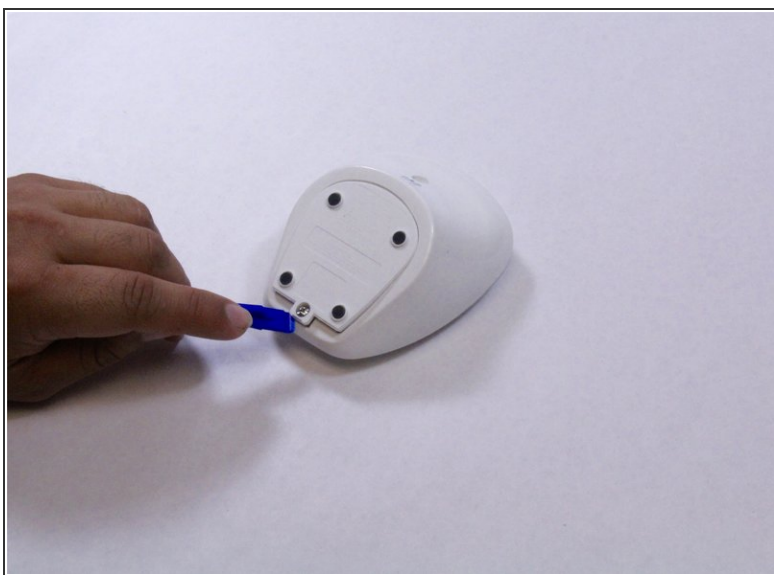
- [Phillips #1 Screwdriver](#) (1)
 - [iFixit Opening Tools](#) (1)
 - [Soldering Iron](#) (1)
-

Step 1 — Nursery Unit Battery



- Remove the 9mm screw from the battery cover of the nursery unit using a Phillips #1 tip screwdriver.

Step 2



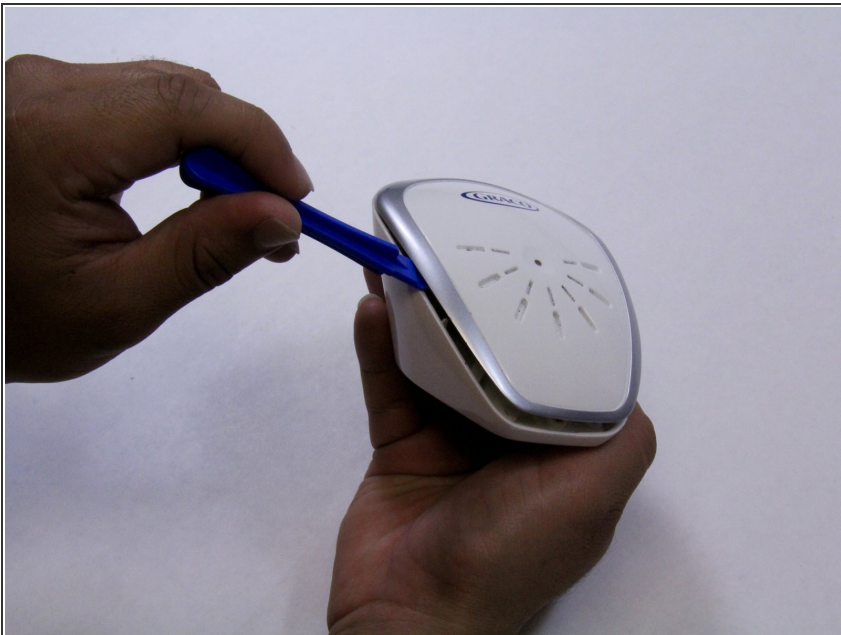
- Using the plastic opening tool, pry and remove the battery cover carefully.
- Remove the batteries using plastic opening tool.
- Replace the batteries.


Step 3 — LED Nursery Unit



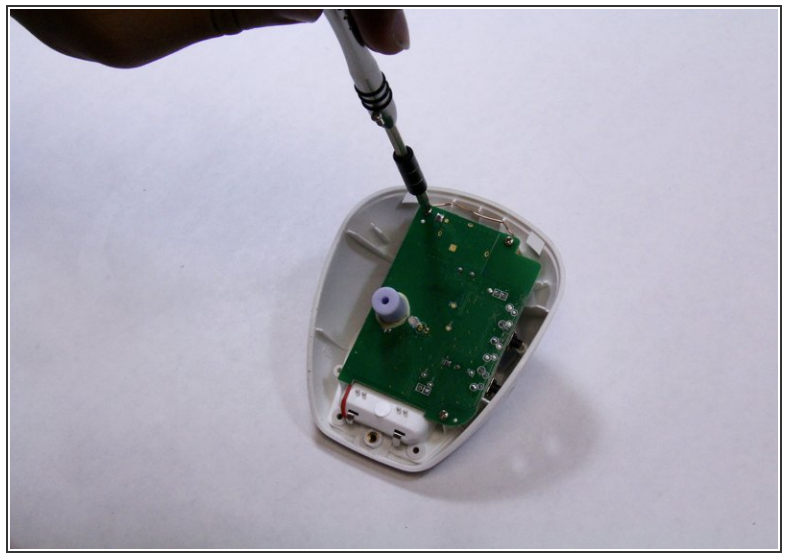
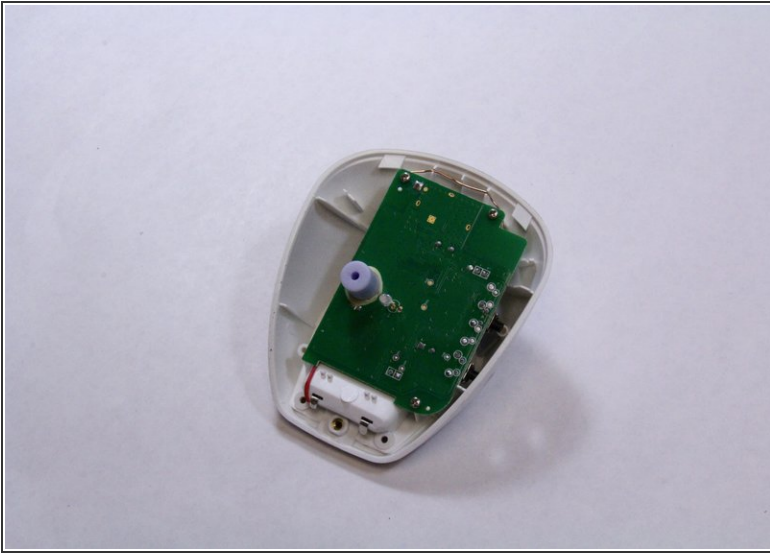
- Remove the two 9mm Phillips #1 screws from the rear case of the device.
- Place the screws in a secure place.

Step 4



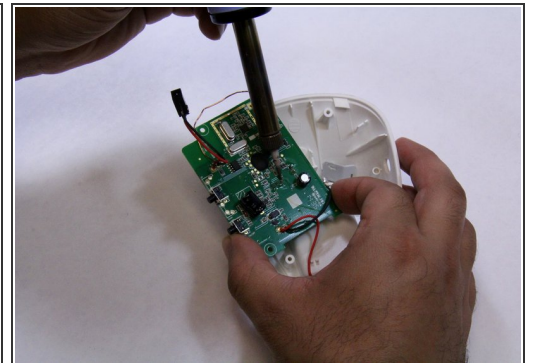
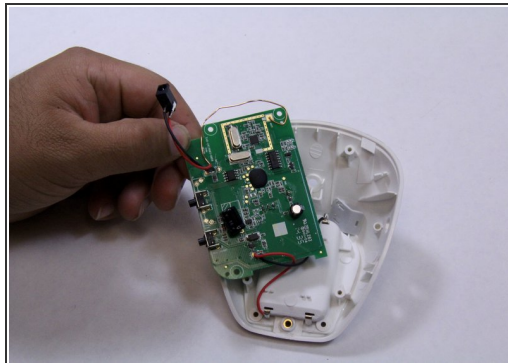
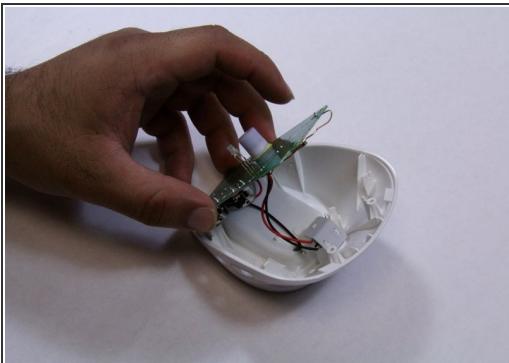
- Hold the bottom of the device with one hand and pull down to separate the front and rear cases.
 - While holding the device with one hand, use plastic opening tool to pry the edges of the front case away from the back case.
-  Apply constant force carefully to avoid breaking any other plastic parts from the device.

Step 5



- Remove all three 7mm Phillips #1 screws from the mother board.
- Place the screws in secure place.

Step 6



- Flip over the motherboard to look at the LED pins that are connected to it.
 - Solder off the LED pin from the motherboard.
- ⓘ There are many pins are connect to the motherboard, so make sure that you solder off the LED pin.
- Replace the LED.

To reassemble your device, follow these instructions in reverse order.