



Disassembling Samsung ATIV Smart PC 500T

Backplate

This guide will show you how to remove the plastic backplate from your Samsung ATIV Smart PC 500T. Prerequisite Only

Written By: Crystal Dinh



INTRODUCTION

In order to get to internal parts of your device, you'll need to remove the backplate first. It is safest to power off your device first. Removing the backplate requires some force, so use caution.

TOOLS:

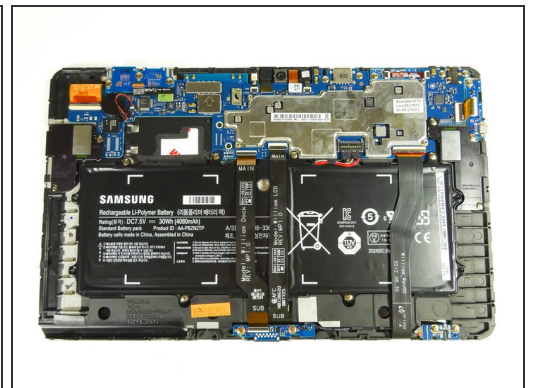
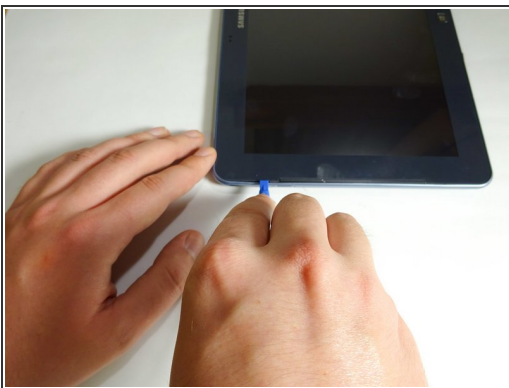
- [iFixit Opening Tools](#) (1)
-

Step 1 — Backplate



- Remove the stylus from the device.
- Place the device screen-up on a hard surface, like a table.

Step 2



- Insert a plastic pry tool or opening pick between the glass and plastic case.
- Work your way around the plastic edge, unclipping the backplate.
- Once the clips are loosened, remove the backplate. Some force may be necessary.

⚠ Though you may need to use force, be careful of the pry tool slipping and hurting you!

To reassemble your device, follow these instructions in reverse order.