



# Sony Walkman NWZ-E438 Device Circuit Board Replacement

This guide will take you through 6 simple steps...

Written By: Cheryl Zinn



# INTRODUCTION

This guide will take you through 6 simple steps to removing your circuit board. For reattachment, simply follow the steps in reverse order.

---

## TOOLS:

[Tweezers](#) (1)  
[Soldering Iron](#) (1)  
[Solder Vacuum](#) (1)  
[iFixit Opening Tool](#) (1)  
[Phillips #000 Screwdriver](#) (1)

---

## Step 1 — Disassembling Sony Walkman NWZ-E438



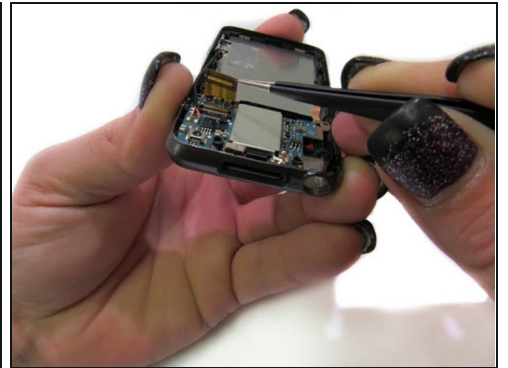
- Unscrew the two screws on the back of the device using a Phillips PH000 screwdriver.
- ① Keep the Phillips PH000 screwdriver aside for further steps in the guide. It will be the only screwdriver needed for this replacement.

## Step 2



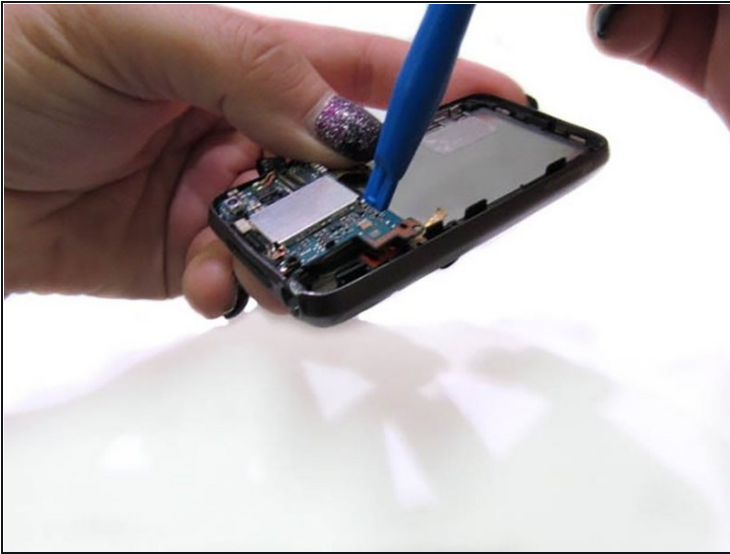
- Use a small prying tool to carefully pry open the back of the device.

## Step 3 — Circuit Board



- First, you must remove the black tape on the circuit board.
- Next, pull up on the red and gold band until it detaches from the chip.

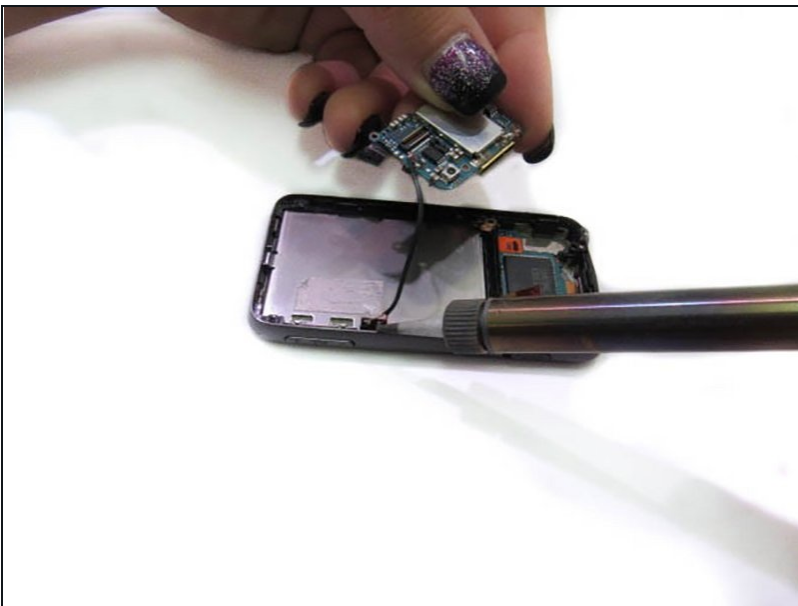
## Step 4



- Using a small plastic prying tool, slip the end under the device circuit board and slowly lift it.
- Once the circuit board is lifted, carefully remove the chip with [tweezers](#).

⚠ The circuit board will still be connected to the device by a wire.

## Step 5



- Using a soldering iron, carefully heat the metal connecting the wires from the device to the circuit board.
- ☑ You will need the soldering iron to reattach those wires once you've replaced the circuit board.

## Step 6



- Carefully remove the circuit board from the device.

---

For reassembling your device, follow the instructions in reverse.