



Sony Walkman NWZ-E438 USB Port Replacement

Follow this guide to replace the USB port.

Written By: Cheryl Zinn





TOOLS:

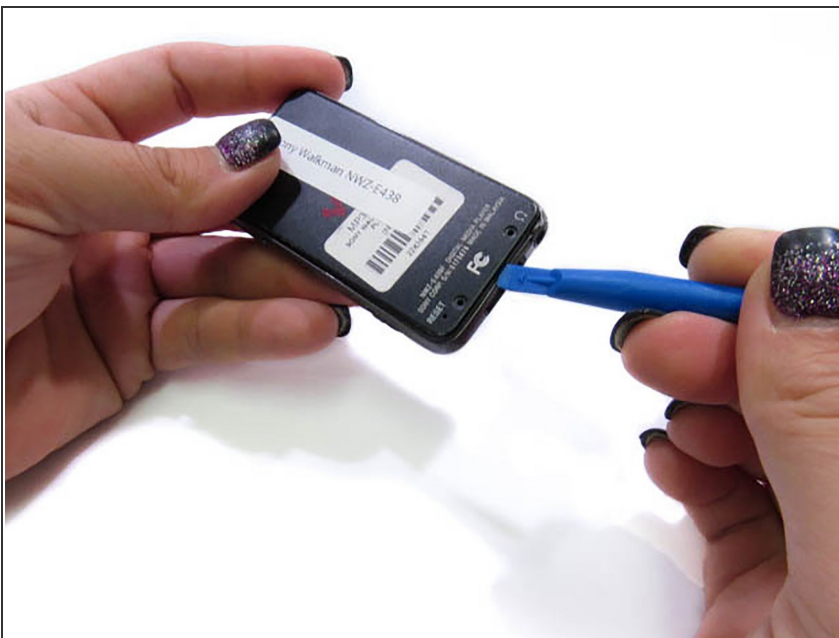
- [Tweezers](#) (1)
 - [Phillips #000 Screwdriver](#) (1)
 - [iFixit Opening Tools](#) (1)
 - [Solder Vacuum](#) (1)
 - [Soldering Iron](#) (1)
-

Step 1 — Disassembling Sony Walkman NWZ-E438



- Unscrew the two screws on the back of the device using a Phillips PH000 screwdriver.
- ⓘ Keep the Phillips PH000 screwdriver aside for further steps in the guide. It will be the only screwdriver needed for this replacement.

Step 2



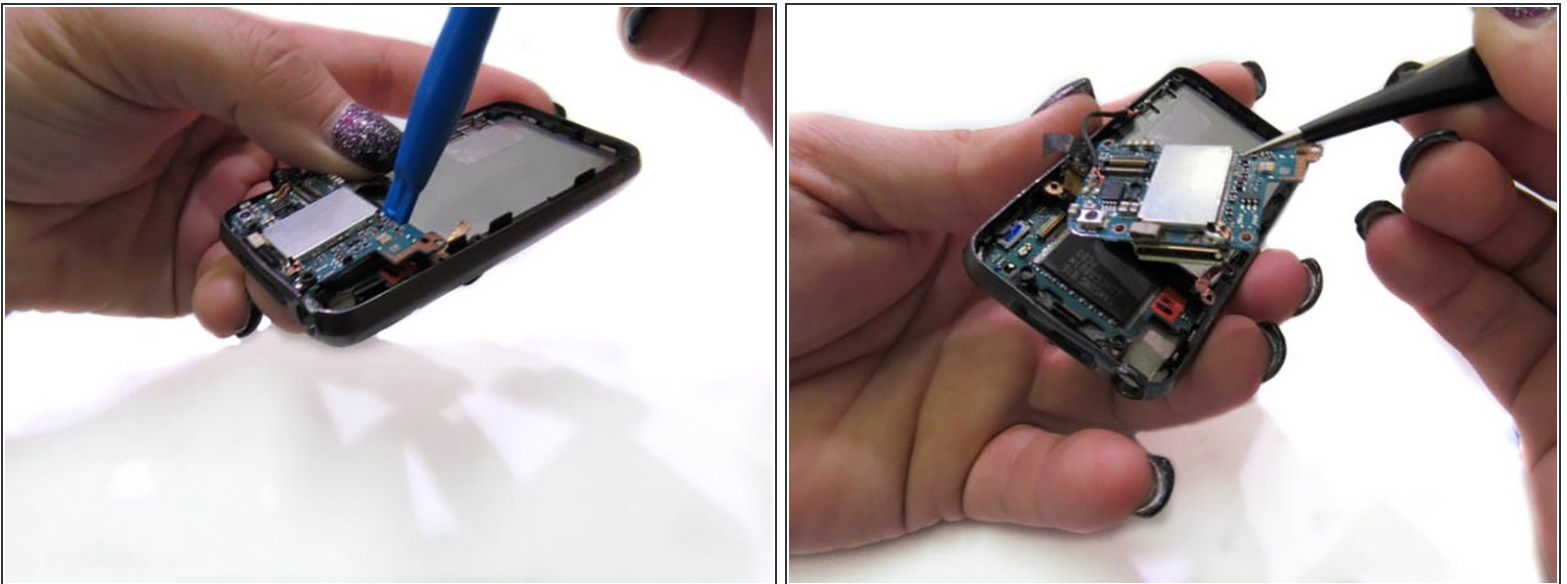
- Use a small prying tool to carefully pry open the back of the device.

Step 3 — Circuit Board




- First, you must remove the black tape on the circuit board.
- Next, pull up on the red and gold band until it detaches from the chip.

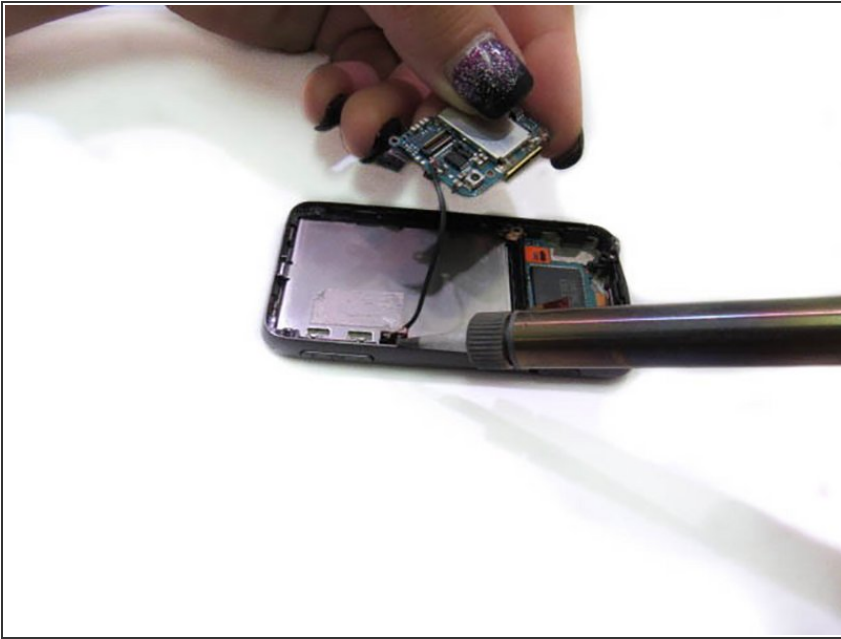
Step 4



- Using a small plastic prying tool, slip the end under the device circuit board and slowly lift it.
- Once the circuit board is lifted, carefully remove the chip with tweezers.

 The circuit board will still be connected to the device by a wire.

Step 5



- Using a soldering iron, carefully heat the metal connecting the wires from the device to the circuit board.
- ★ You will need the soldering iron to reattach those wires once you've replaced the circuit board.

Step 6



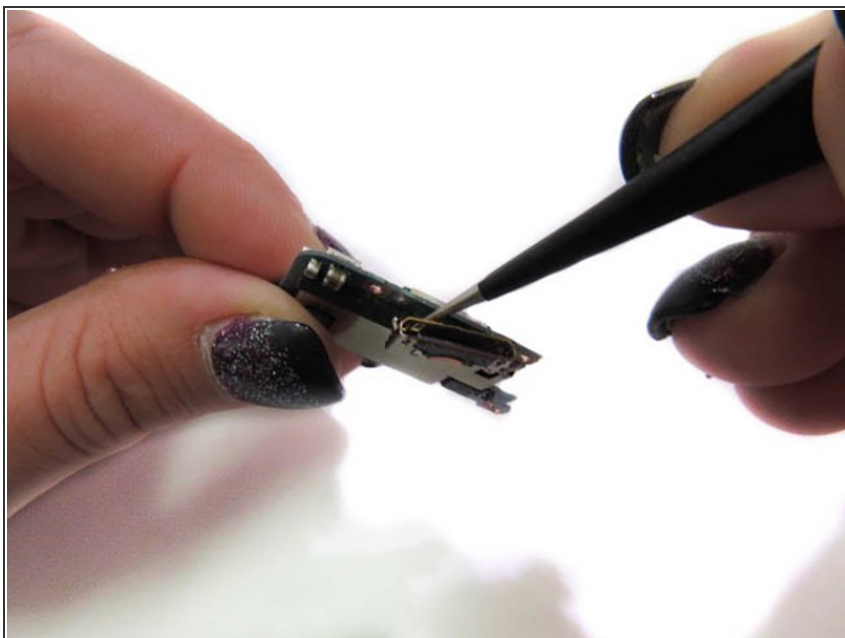
- Carefully remove the circuit board from the device.

Step 7 — USB Port



- Using fine point tweezers, push them between the chip and USB port.

Step 8



- Slowly pry the USB port off of the chip.
- ⓘ You will need to solder the new USB onto the circuit board.

Step 9



- Remove USB port.

To reassemble your device, follow these instructions in reverse order.