



# Sony Walkman NWZ-E438 USB Port Replacement

Written By: Cheryl Zinn



---

## TOOLS:

Tweezers (1)  
Phillips #000 Screwdriver (1)  
iFixit Opening Tool (1)  
Solder Vacuum (1)  
Soldering Iron (1)

---

### Step 1 — Disassembling Sony Walkman NWZ-E438



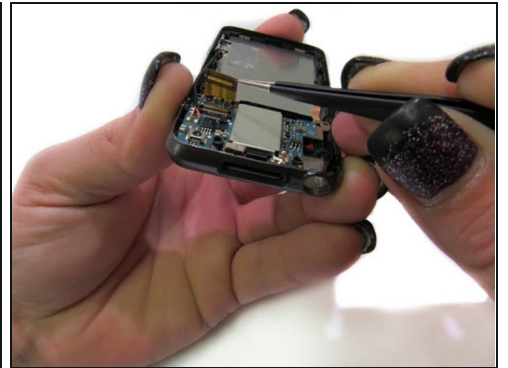
- Unscrew the two screws on the back of the device using a Phillips PH000 screwdriver.
- ① Keep the Phillips PH000 screwdriver aside for further steps in the guide. It will be the only screwdriver needed for this replacement.

## Step 2



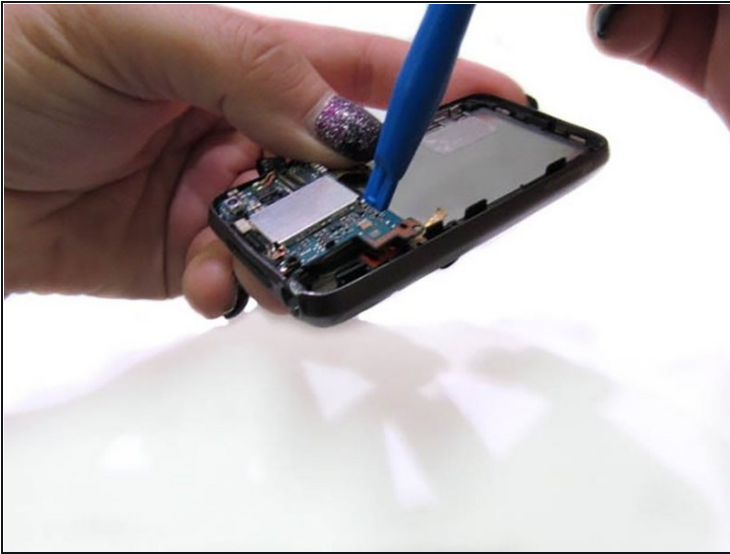
- Use a small prying tool to carefully pry open the back of the device.

## Step 3 — Circuit Board



- First, you must remove the black tape on the circuit board.
- Next, pull up on the red and gold band until it detaches from the chip.

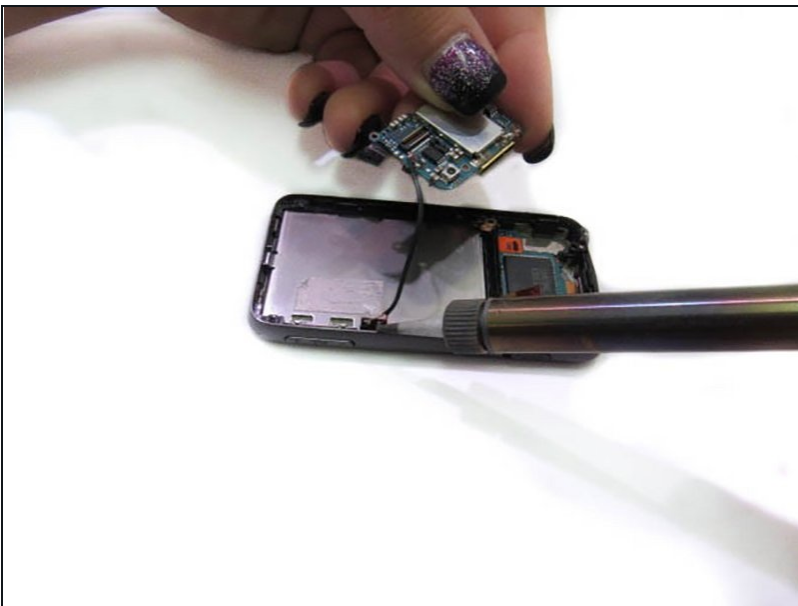
## Step 4



- Using a small plastic prying tool, slip the end under the device circuit board and slowly lift it.
- Once the circuit board is lifted, carefully remove the chip with [tweezers](#).

⚠ The circuit board will still be connected to the device by a wire.

## Step 5



- Using a soldering iron, carefully heat the metal connecting the wires from the device to the circuit board.
- ☑ You will need the soldering iron to reattach those wires once you've replaced the circuit board.

## Step 6



- Carefully remove the circuit board from the device.

## Step 7 — USB Port



- Using fine point [tweezers](#), push them between the chip and USB port.

## Step 8



- Slowly pry the USB port off of the chip.
- ① You will need to solder the new USB onto the circuit board.

## Step 9



- Remove USB port.

---

To reassemble your device, follow these instructions in reverse order.