



# Sony Walkman NWZ-E438 Battery Replacement

Written By: Cheryl Zinn



## TOOLS:

Tweezers (1)

Phillips #000 Screwdriver (1)

iFixit Opening Tool (1)

### Step 1 — Disassembling Sony Walkman NWZ-E438



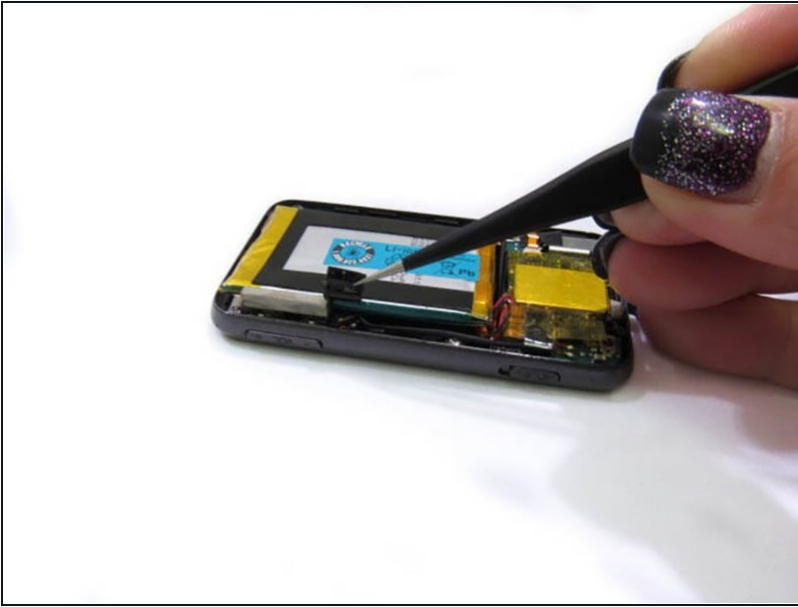
- Unscrew the two screws on the back of the device using a Phillips PH000 screwdriver.
- ① Keep the Phillips PH000 screwdriver aside for further steps in the guide. It will be the only screwdriver needed for this replacement.

### Step 2



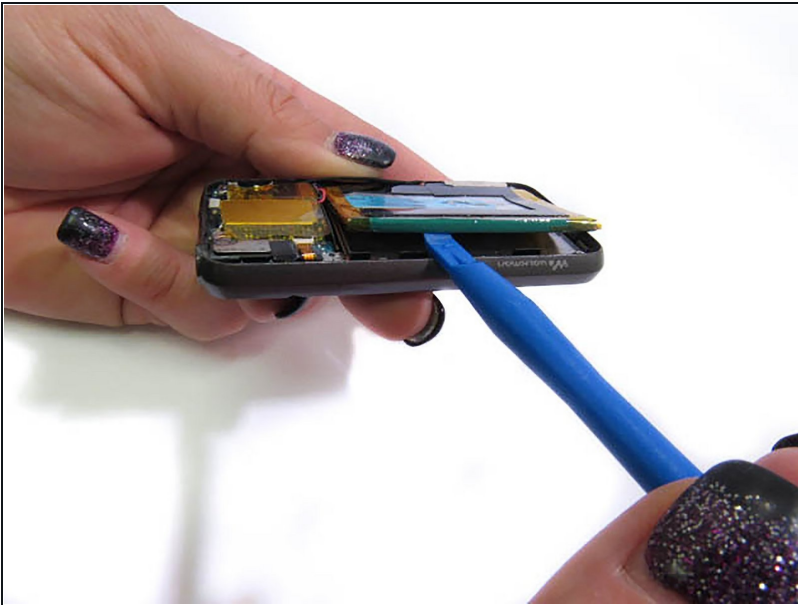
- Use a small prying tool to carefully pry open the back of the device.

### Step 3 — Battery



- Peel back the black tape from the device to the battery from the side of the device.

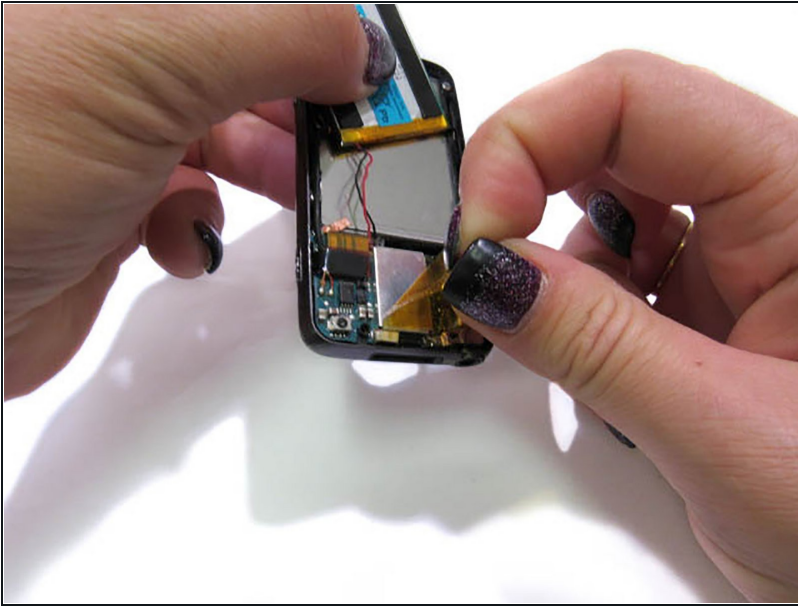
### Step 4



- Using a small, plastic prying tool slowly lift the battery around all edges.

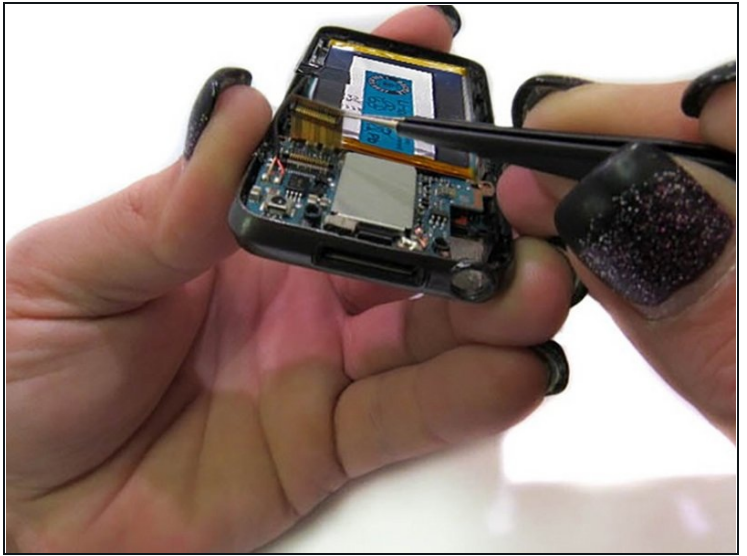
⚠ Careful of wires connecting the battery to the device.

## Step 5



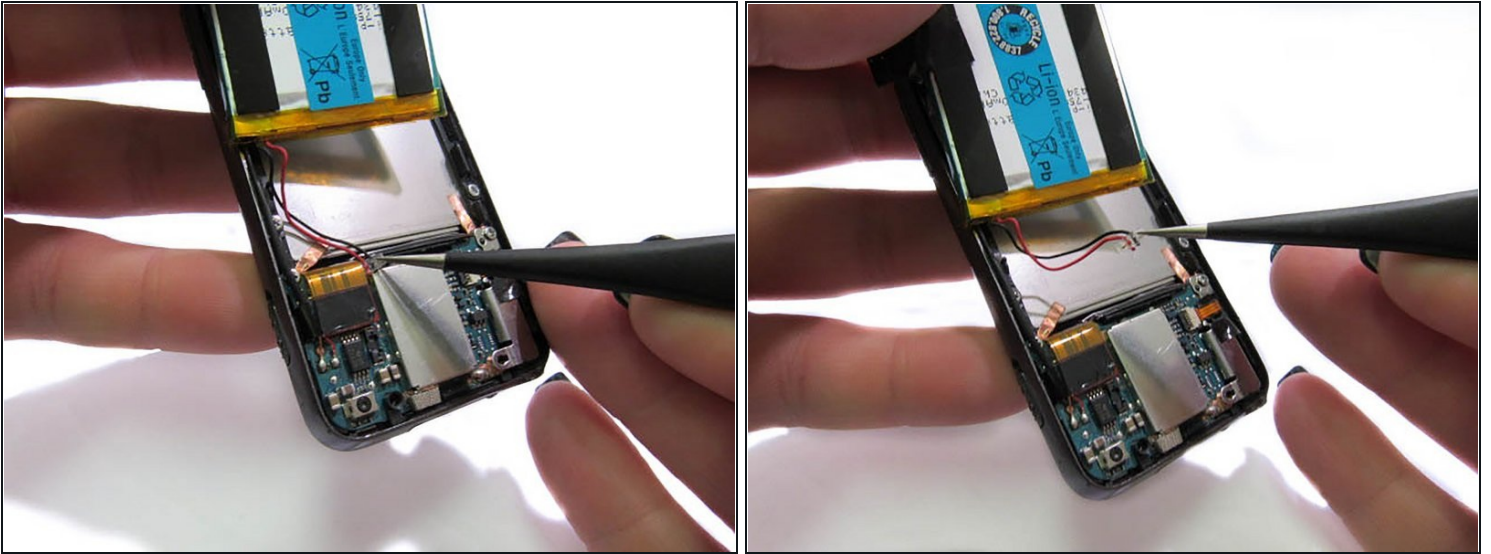
- Remove the yellow film covering the circuit board with pointed precision [tweezers](#).

## Step 6



- Using tweezers, unplug the gold band connecting the device and circuit board.

## Step 7



- Using pointed precision tweezers, unplug the wires connecting the battery and chip from the chip.

## Step 8



- Remove battery.

To reassemble your device, follow these instructions in reverse order.