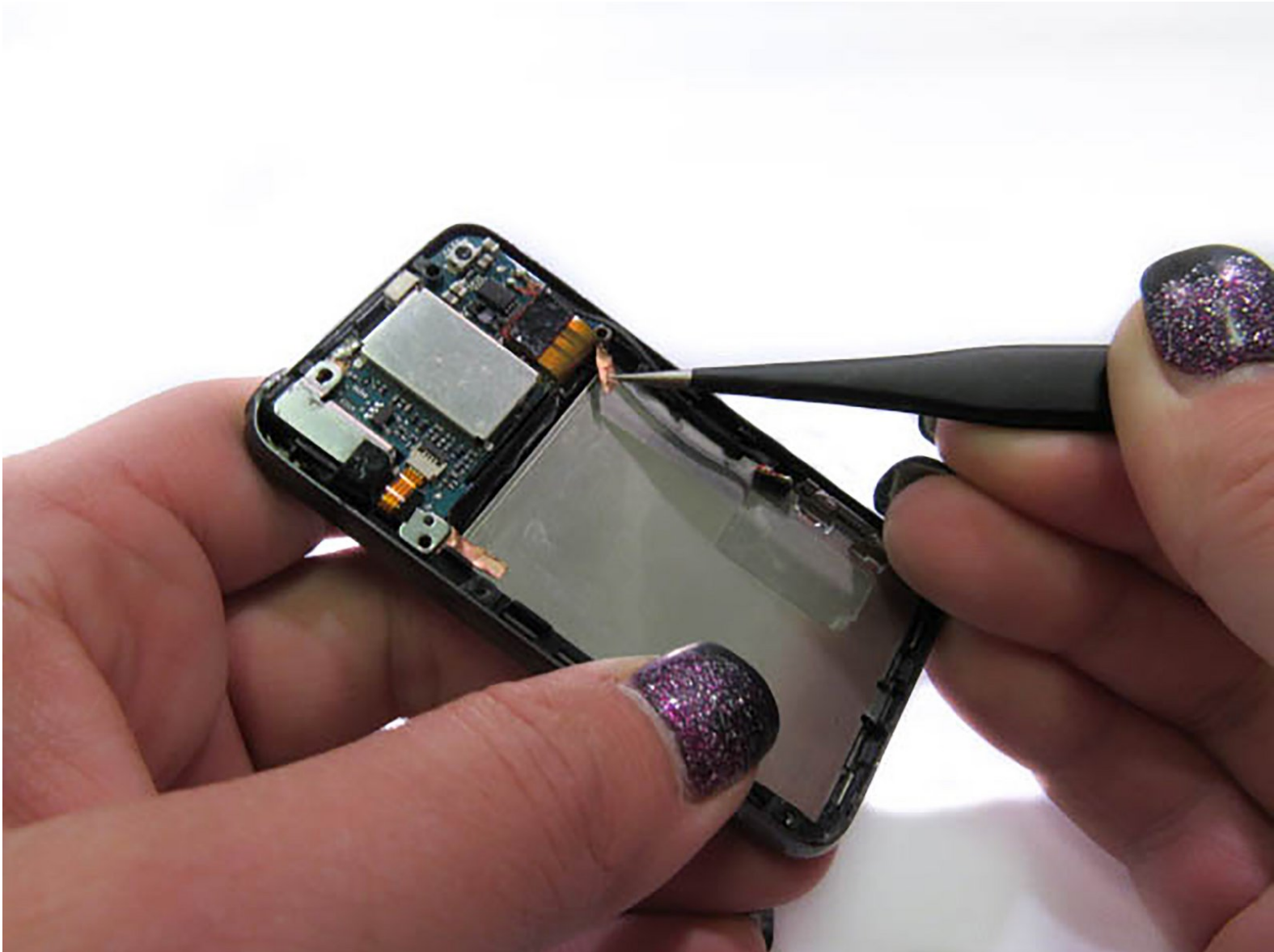




Sony Walkman NWZ-E438 Screen Replacement

This guide walks you through how to replace a broken screen.

Written By: Cheryl Zinn



INTRODUCTION

Follow this guide to replace a cracked or broken screen on you Sony Walkman NWZ-E438.



TOOLS:

- [Tweezers](#) (1)
 - [Phillips #000 Screwdriver](#) (1)
 - [iFixit Opening Tools](#) (1)
-

Step 1 — Disassembling Sony Walkman NWZ-E438



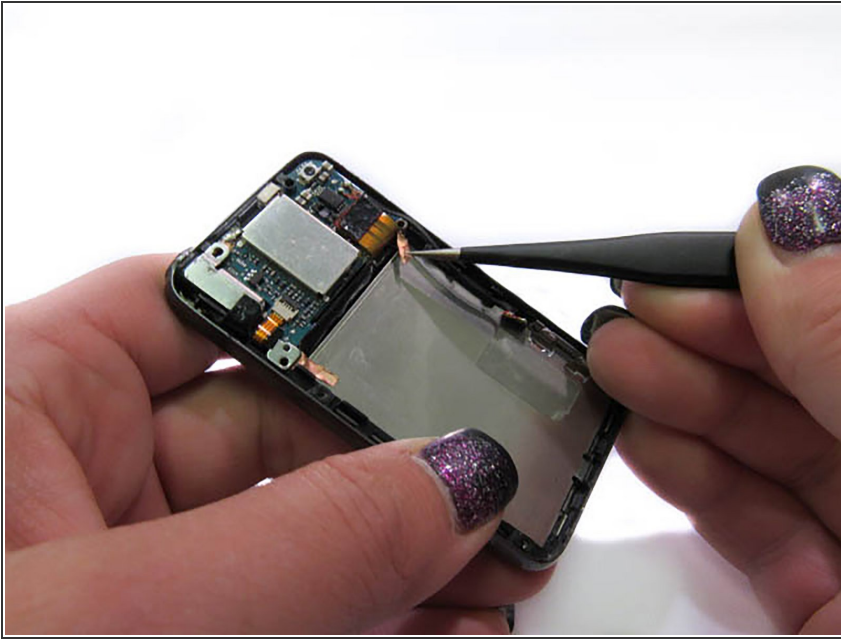
- Unscrew the two screws on the back of the device using a Phillips PH000 screwdriver.
- ① Keep the Phillips PH000 screwdriver aside for further steps in the guide. It will be the only screwdriver needed for this replacement.

Step 2



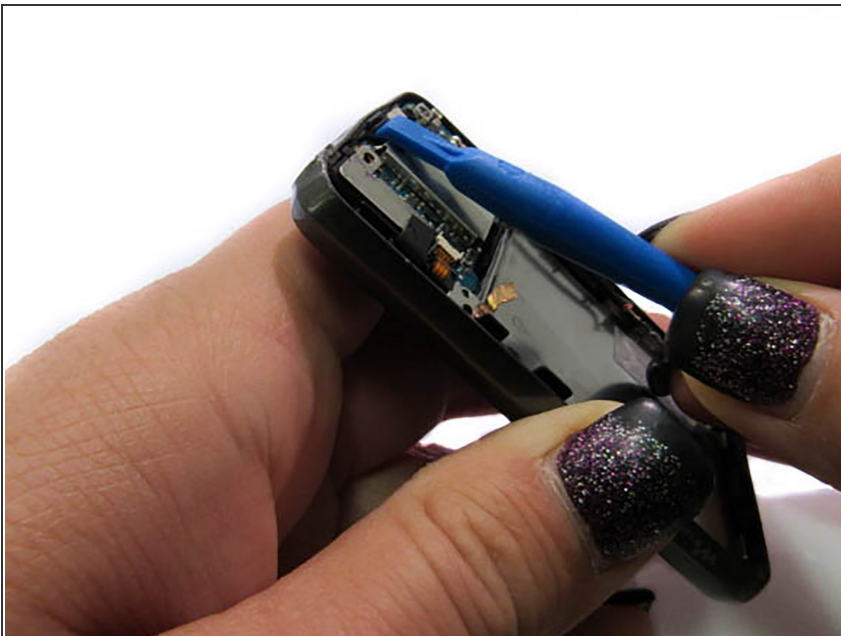
- Use a small prying tool to carefully pry open the back of the device.

Step 3 — Screen



- Pull up the 2 copper strips connecting the outside of the device to the inside of the device.

Step 4



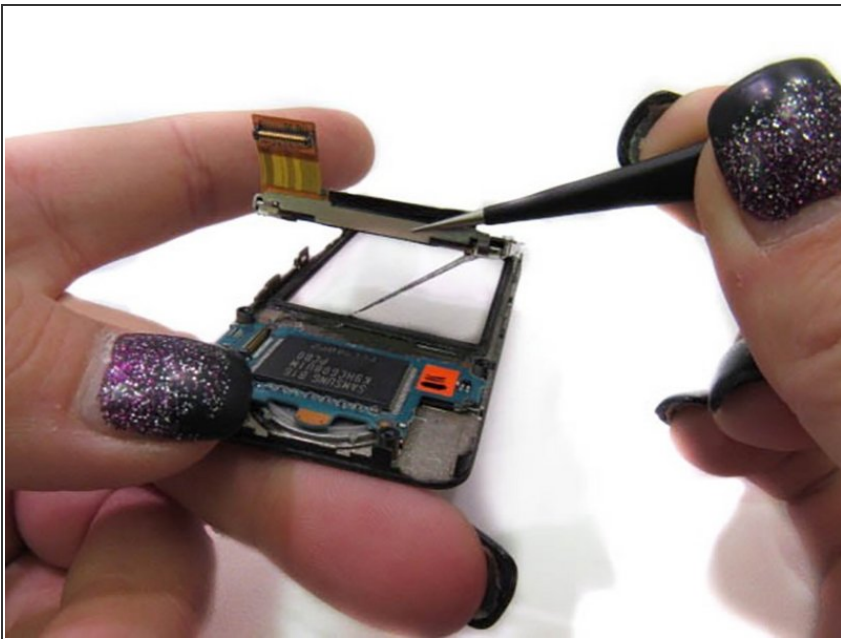
- Using the small, plastic prying tool wedge it between the bottom of the frame and the outer frame.
- Slowly circle the device, popping the outside of the frame off.

Step 5



- To remove the screen, use the fine point tweezers and lift up on the metal piece at the bottom of the frame.

Step 6



- To remove screen from metal backing, use fine point tweezers to go in between the screen and metal backing and slowly pull them apart.

Step 7



- The screen will be removed.

To reassemble your device, follow these instructions in reverse order.