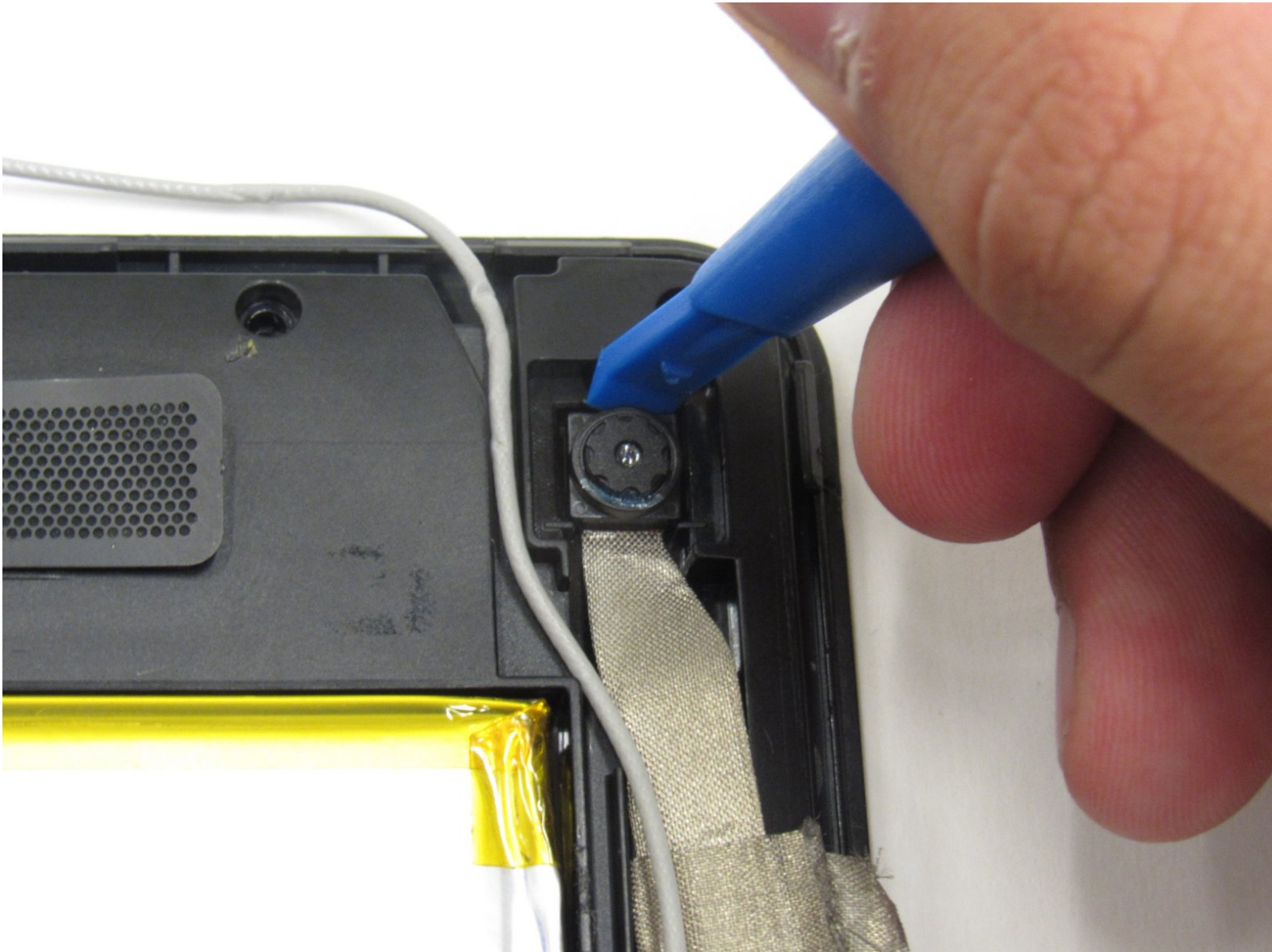




Insignia Flex 8 NS-15AT08 Cameras Replacement

This guide will demonstrate how to replace the front and rear cameras of the device.

Written By: Krystal Rhodes






TOOLS:

- [iFixit Opening Tools](#) (1)
 - [Tweezers](#) (1)
-

Step 1 — Back Casing



- Insert a plastic opening tool into the seam between the back casing and the screen to separate the back casing from the tablet.

 You may need to use a metal opening tool for extra prying power, but beware that it can scratch your device or damage the internal components if the tool is inserted too deep.

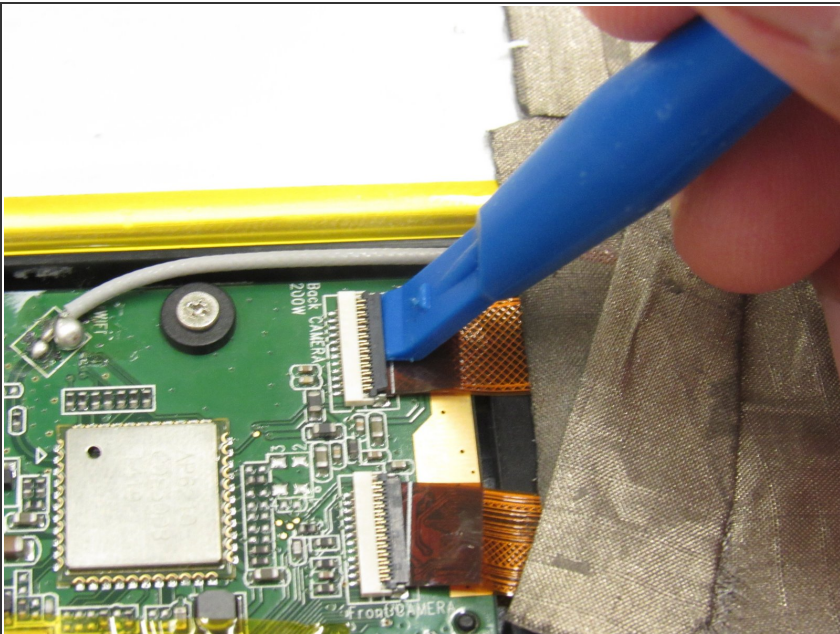
 You will hear the tabs pop as you separate the back casing around the tablet.

Step 2



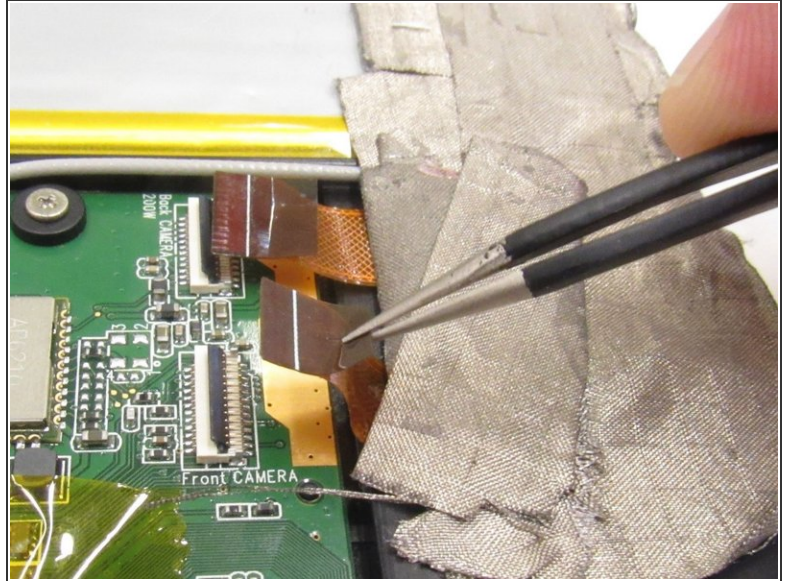
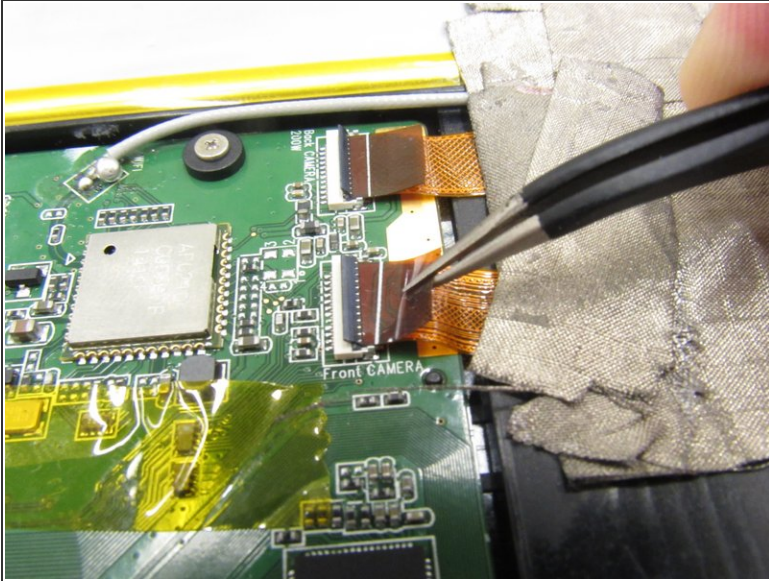
- Lift the back casing away from the rest of the device which should include the exposed circuit board and screen.
- Set the casing aside.

Step 3 — Cameras



- Use a plastic opening tool to flip up the black strip that is holding the orange camera ribbon near the module on the circuit board labeled "front camera" in white print.
- Repeat this action on the orange camera ribbon near the module on the circuit board labeled "back camera" in white print.

Step 4



- Use tweezers to gently pull on both orange camera ribbons in the opposite direction in which they are connected until they disconnect from the modules on the circuit board.

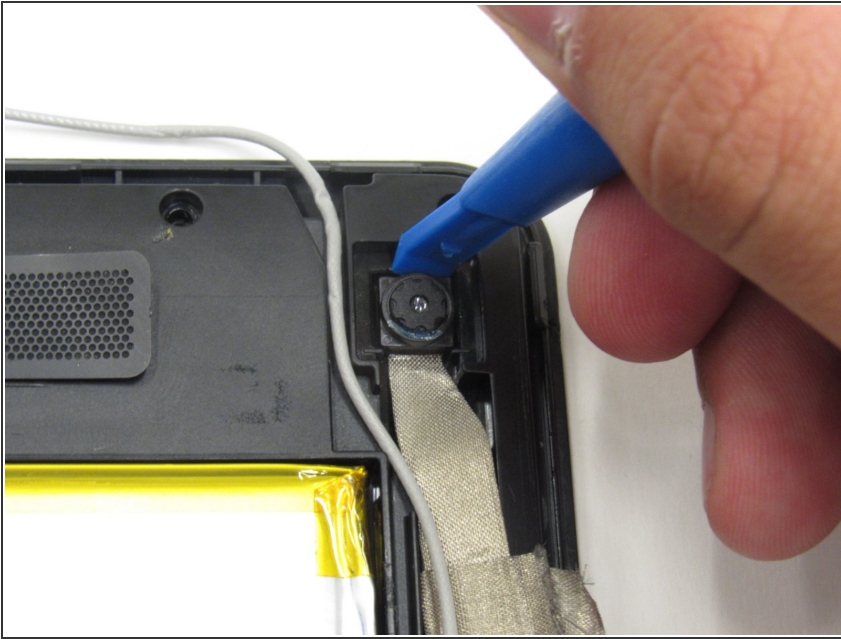
Step 5



- Peel off the grey tape covering the ribbons, in order to separate the cameras and their respective ribbons from the rest of the device.

 Do not use excessive force while removing the tape to prevent tears in the ribbons.

Step 6



- Use a plastic opening tool to pry out the back camera at the top of the circuit board.

To reassemble your device, follow these instructions in reverse order.