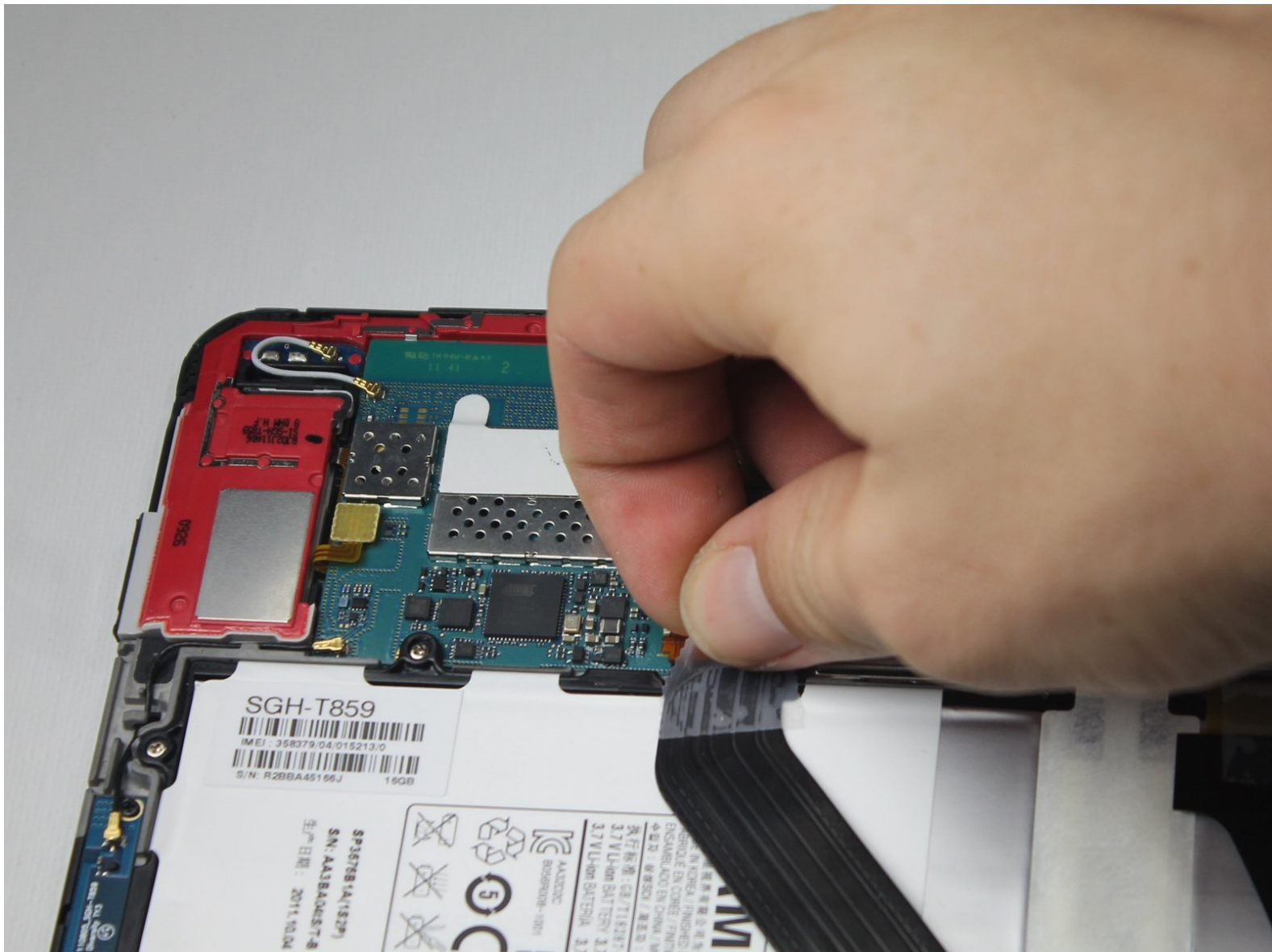




Samsung Galaxy Tab 10.1 4G Battery Replacement

If your Samsung Galaxy Tab 10.1 4G dies easily, you may consider replacing the battery. This guide will walk you through the steps to do that!

Written By: Ashley Stark



This document was generated on 2020-11-26 09:11:25 AM (MST).

INTRODUCTION

You will first need to remove the back panel of the device to gain access to the battery housing. There are four total cables to disconnect before the battery comes free: one power cable that runs between the motherboard and the battery itself, and three ribbon cables that inhibit access to the battery. A small electronics screwdriver, preferably a Phillips #00, will remove the screws holding the battery in its housing. From there the battery can be replaced.



TOOLS:

- [Phillips #00 Screwdriver](#) (1)
- [iFixit Opening Tools](#) (1)
- [Spudger](#) (1)



PARTS:

- [Samsung Galaxy Tab 4 10.1 Battery](#) (1)

Step 1 — Back Panel



- ❗ Power off your tablet before you begin disassembly.
- Screen side facing you, rotate device 180 degrees so the "SAMSUNG" logo is upside down.

Step 2



- Using the plastic opening tool, start in the center near the charge port and wedge the angled tip between the plastic back and the glass screen.
- Create a wedge and apply pressure. Use the tool to separate the screen from the back until you hear an audible “pop.”
- Continue to wedge the tool about every inch along the current edge.

Step 3




- Once the bottom edge has been loosened, work towards a bottom corner from the other edge and continue to wedge gently until you can “pop” the corner out.
- Continue this process on the other bottom corner until it can be popped out as well.

Step 4



- Place your hand between the device and the back panel. Then continue the wedging motion along the top edge of the device until the back panel comes loose.

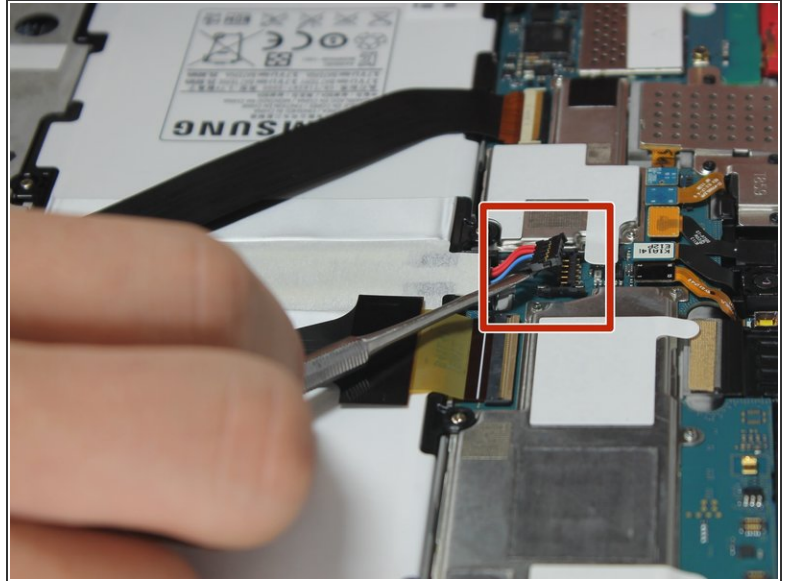
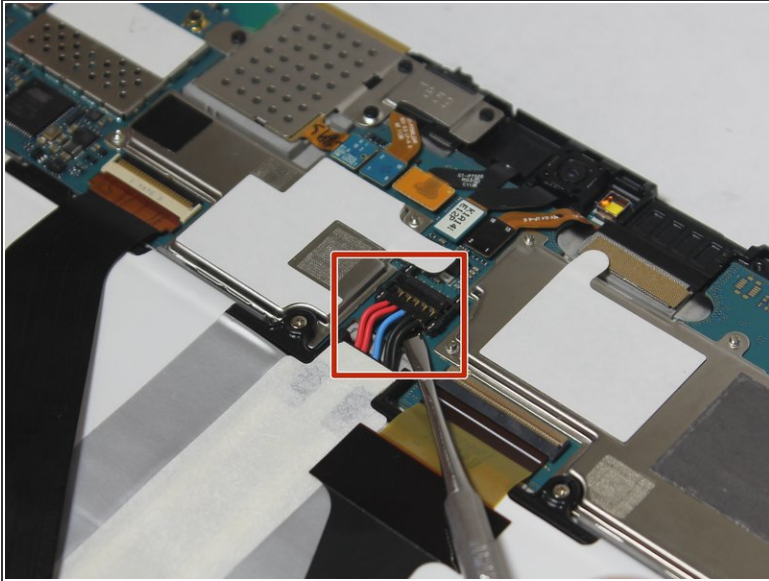
 Do not wedge the tool directly on top of the power buttons and headphone jack. Wedge nearby so that you don't damage internal hardware.

Step 5



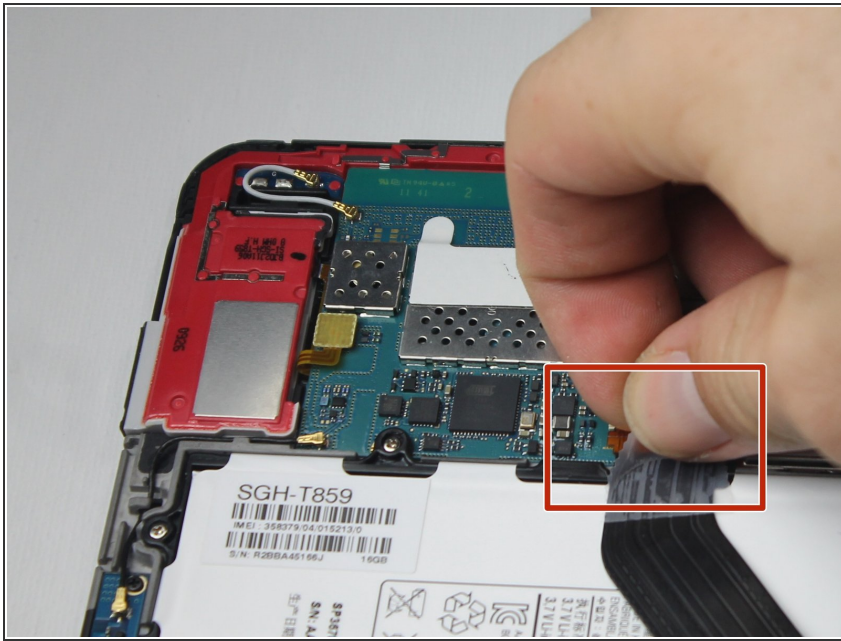
- Remove the back from the device.
- ⓘ Excessive force shouldn't be necessary here. If the back panel is sticking, find the area of the edge closest to the sticking point and wedge the opening tool there until the back panel pops free.

Step 6



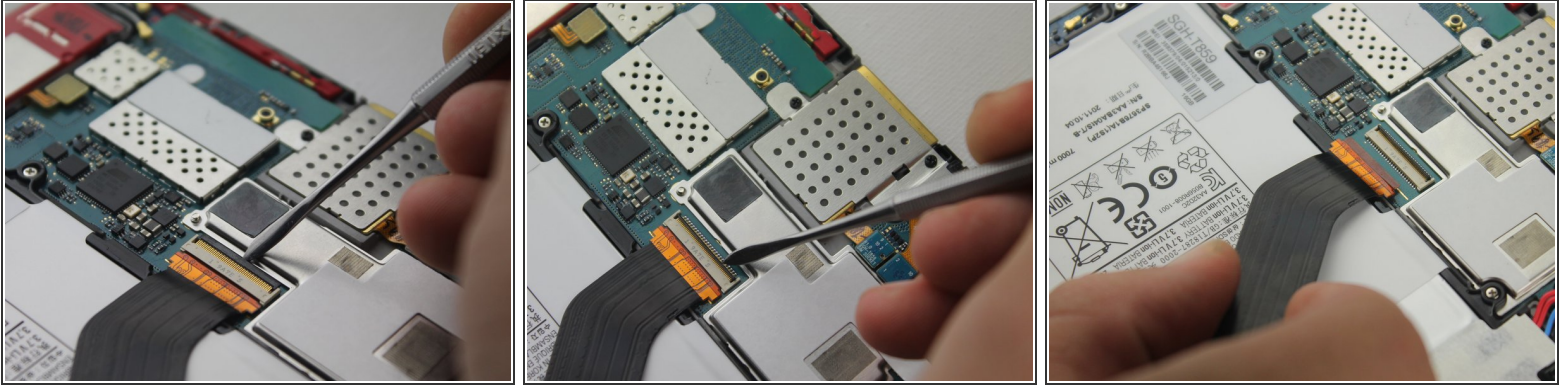
- ⚠ When working with electronics, it's important to choose a tool that's ESD-safe to avoid accidental damage to the device. The regular black nylon spudger or a plastic opening tool should be used whenever possible.
- The connection between the battery and motherboard is a group of four wires in black housing that can be found near the top middle of the device. Using a **plastic** spudger or a flat, slim tool, lift the black connector housing upwards to disconnect it.

Step 7 — Battery




- Remove the small piece of tape covering the ribbon connector.
 - You don't need to save this piece of tape.
- ✦ When reassembling your device, simply replace this tape with a piece of scotch tape.

Step 8

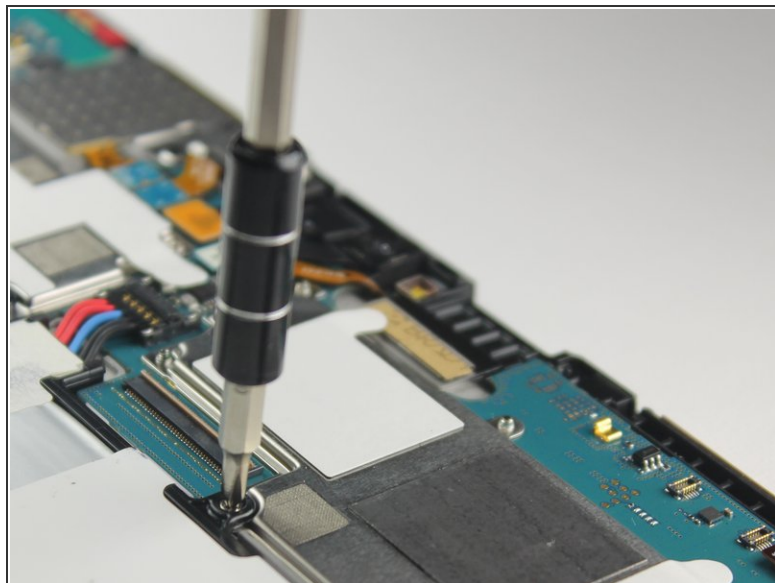
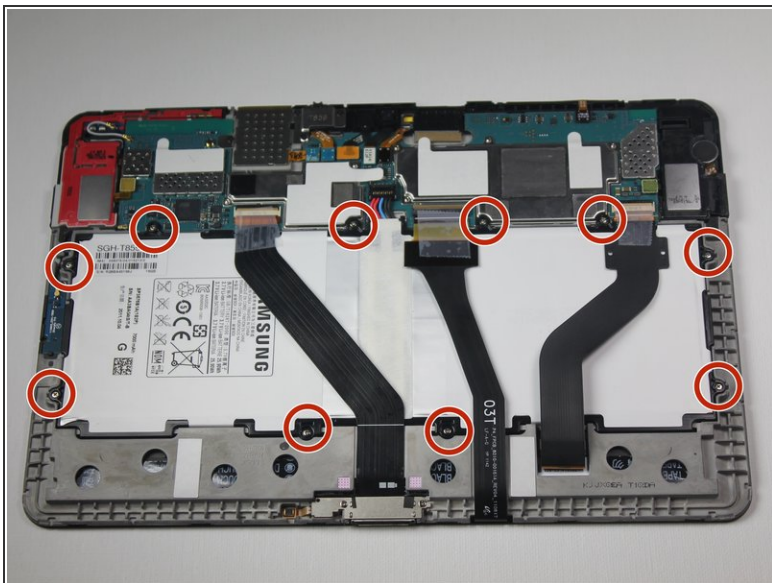


- Carefully slide a **plastic** spudger under the black strip of plastic on the far side of the ribbon connector housing.

 When working with electronics, it's important to choose a tool that's ESD-safe to avoid accidental damage to the device. The regular black nylon spudger or a plastic opening tool should be used whenever possible.

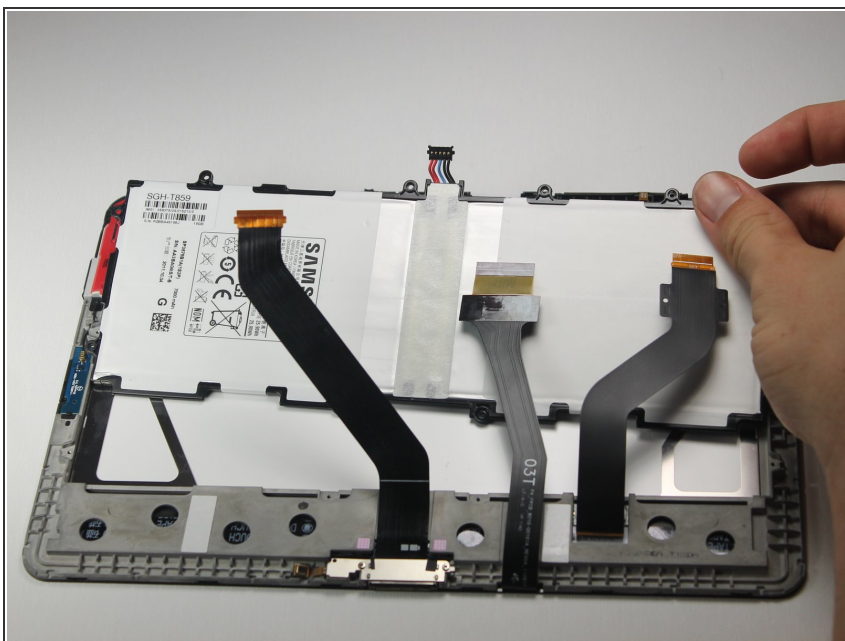
- Lift the black strip upwards. This will release the ribbon.
- Slide the ribbon out of the connector.
- Repeat this step to release the other two ribbons.
 - You will need to remove the tape from covering those connectors, too.

Step 9



- Use the Phillips #00 screwdriver to unscrew the 10 3mm screws holding the battery in place.

Step 10



- Lift the battery out of its housing to remove it.

To reassemble your device, follow these instructions in reverse order.