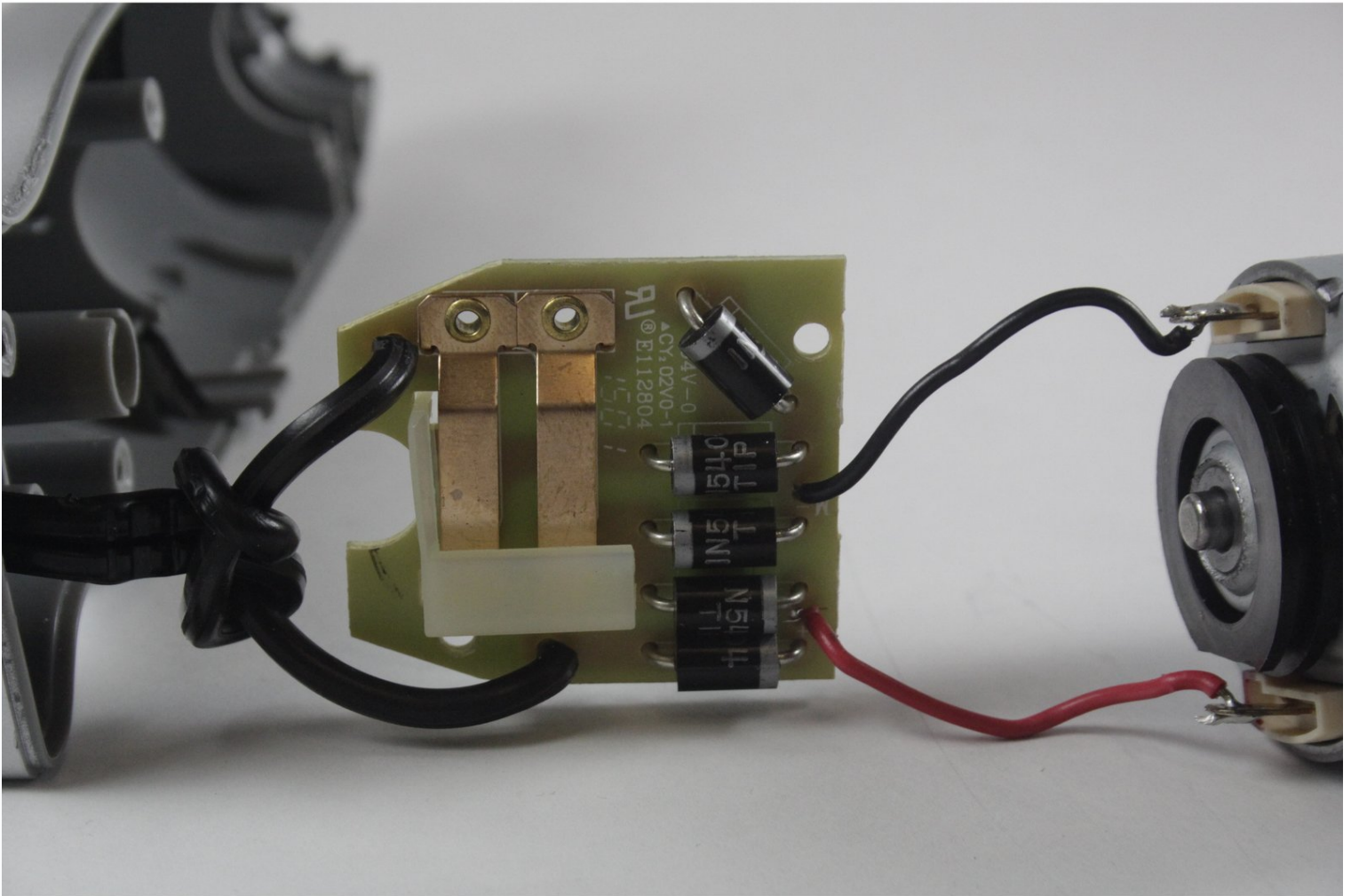




Cuisinart Smart Stick CSB-75 Power Switch Board Replacement

This guide will show you how to replace the...

Written By: Jordan Robinson



INTRODUCTION

This guide will show you how to replace the switch board inside your Cuisinart Smart Stick. If power is not being supplied to the Smart Stick, the switch board could be unresponsive.

TOOLS:

Metal Spudger Set (1)

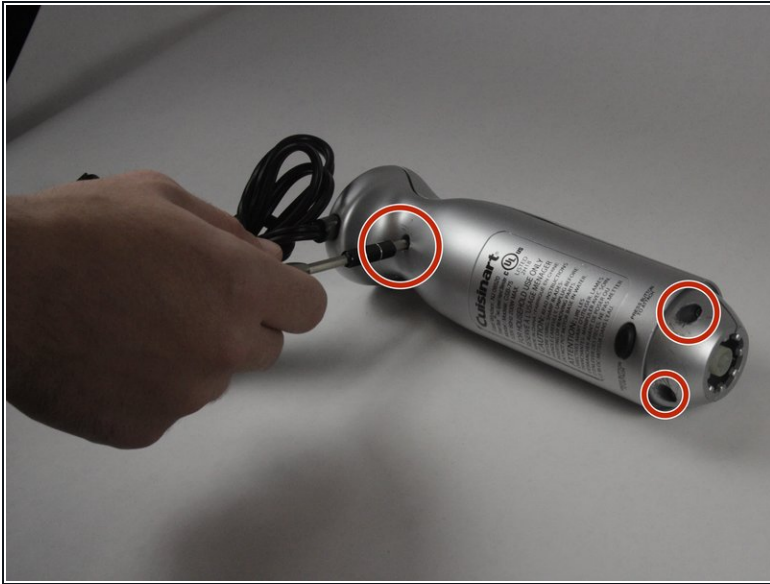
Mako Precision Bit Set (1)

Step 1 — Power Switch Board



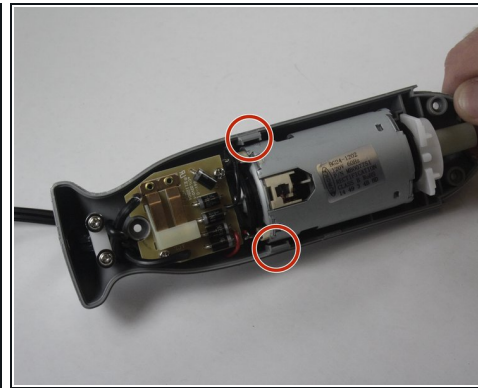
- Located on the back of the motor body are three screw covers. To remove the three grey screw covers, use a Flat Head Screwdriver (1.0mm or 1.5mm).
- After prying these off, the screws will be exposed.

Step 2



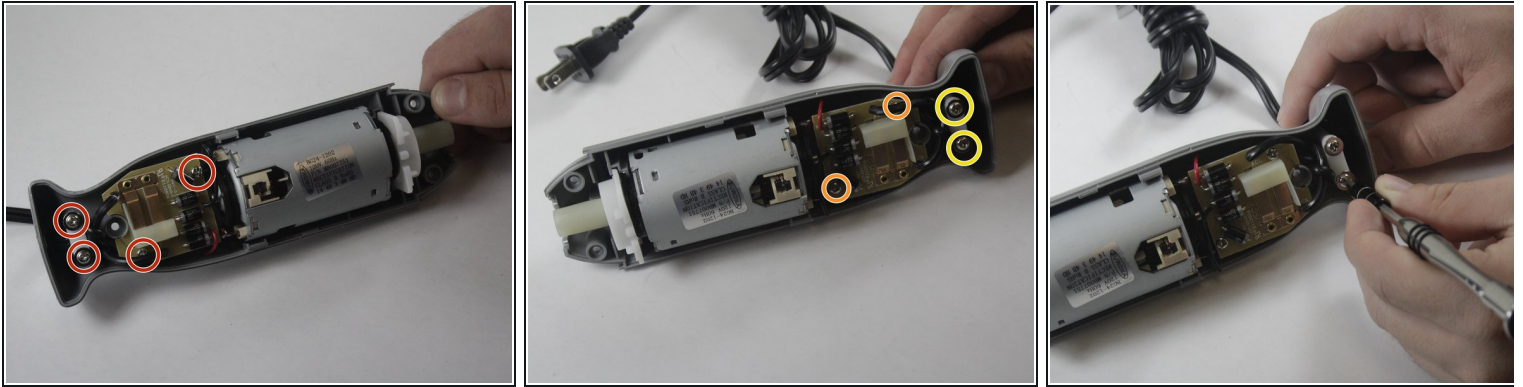
- Remove three 13.3 mm Phillips PH#2 screws.


Step 3



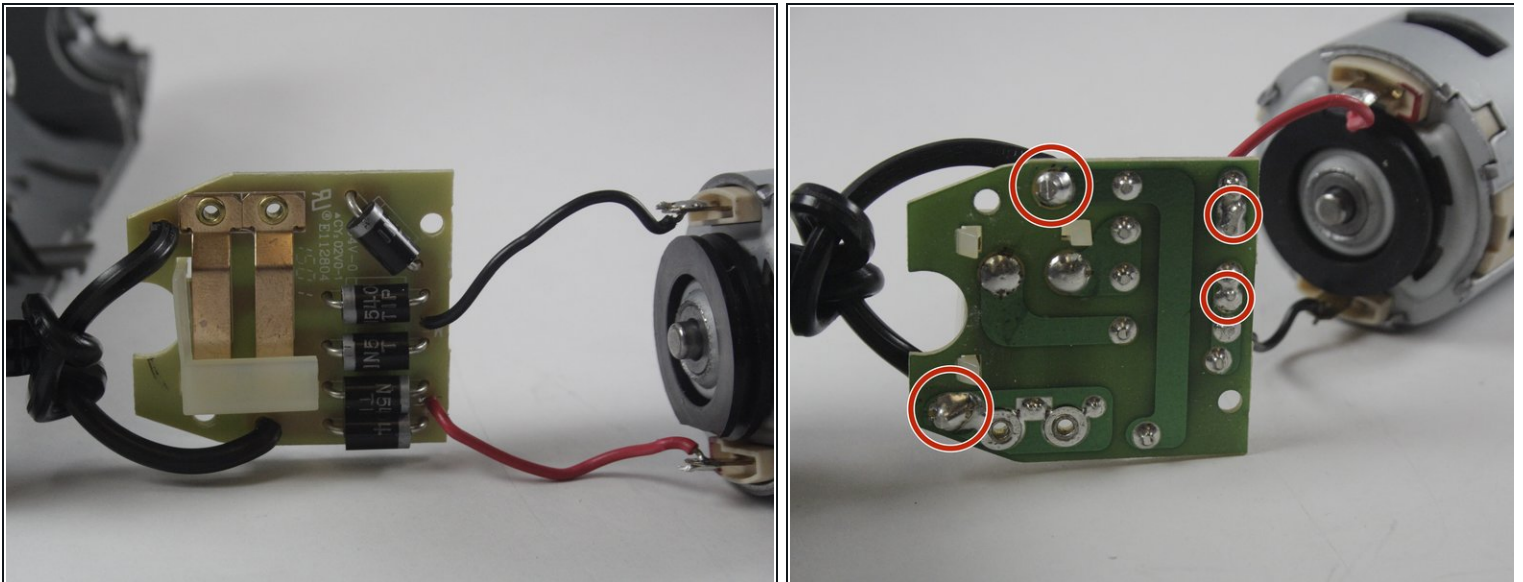
- Pry open Cuisinart using a plastic opening tool.
 - ⓘ The metal spudger is great when you need serious prying power, but the regular black nylon spudger or a plastic opening tool should be used whenever possible.
- Make sure to pry open near the clips of the smart stick for easy opening.

Step 4



- Unscrew the 4 screws on the inside.
 - Remove 2 13.3mm Phillips PH#2 screws.
 - Remove 2 17.5 mm Phillips PH#2 screws.
-  Unscrewing these screws will isolate the switch board.

Step 5



- Refer to these steps on [Soldering](#) to replace the switch board in the smart stick.

 Be careful when soldering. Metal components will become very hot.

To reassemble your device, follow these instructions in reverse order.