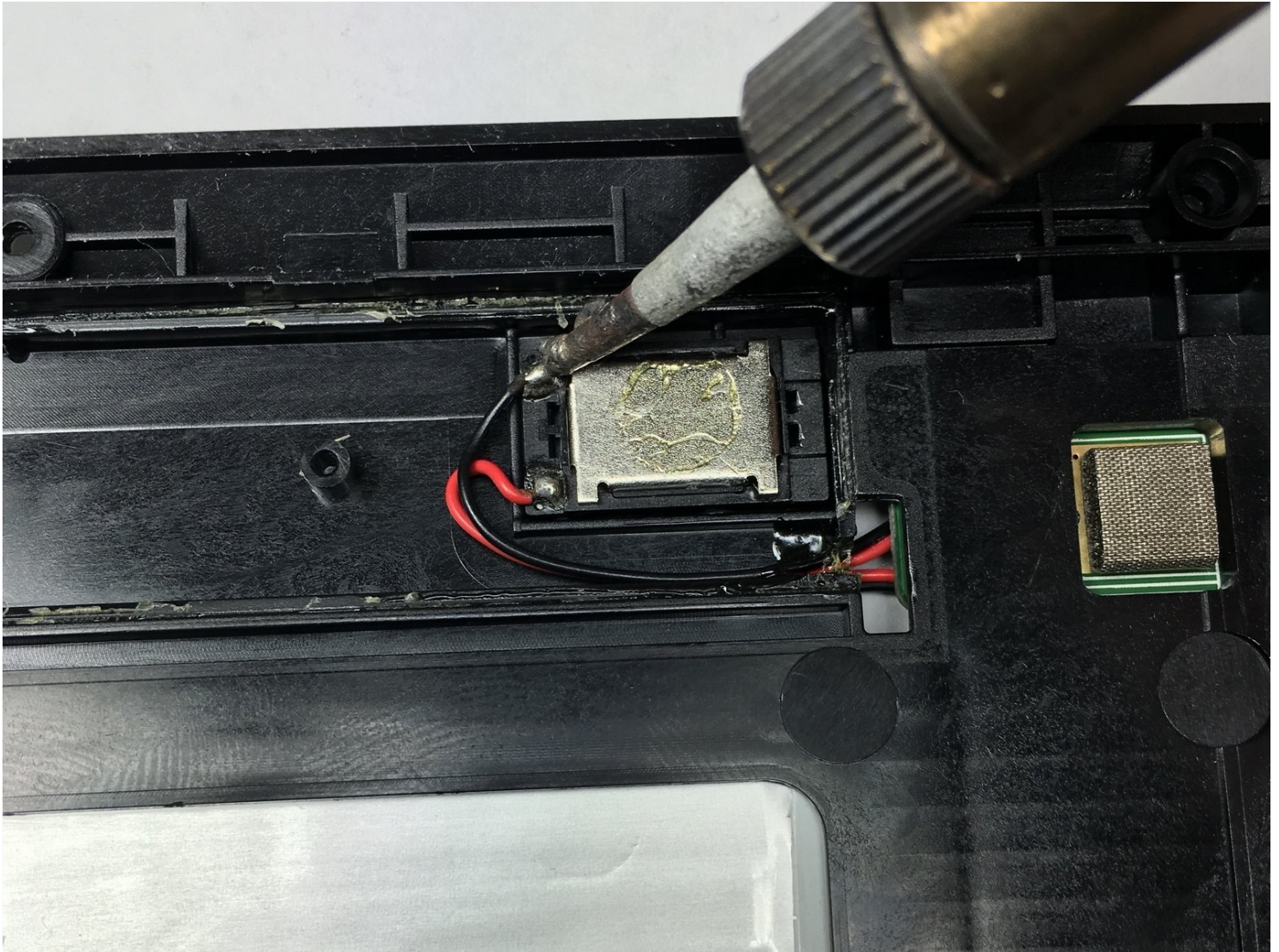




# Insignia Flex 8 NS-15AT08 Internal Speakers Replacement

Written By: Jeremy Anaya



---

## TOOLS:

Phillips #00 Screwdriver (1)

iFixit Opening Tool (1)

Soldering Iron (1)

---

### Step 1 — Back Casing



- Insert a plastic opening tool into the seam between the back casing and the screen to separate the back casing from the tablet.

 You may need to use a metal opening tool for extra prying power, but beware that it can scratch your device or damage the internal components if the tool is inserted too deep.

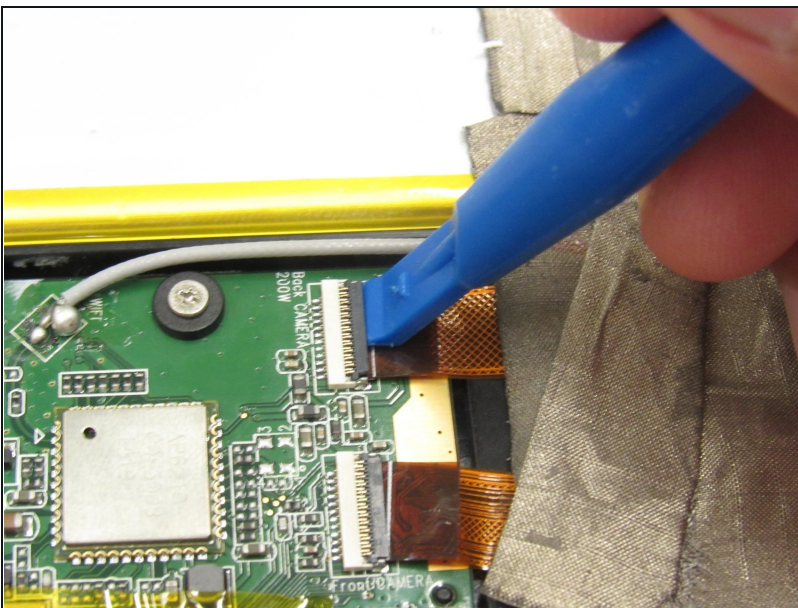
- ① You will hear the tabs pop as you separate the back casing around the tablet.

## Step 2



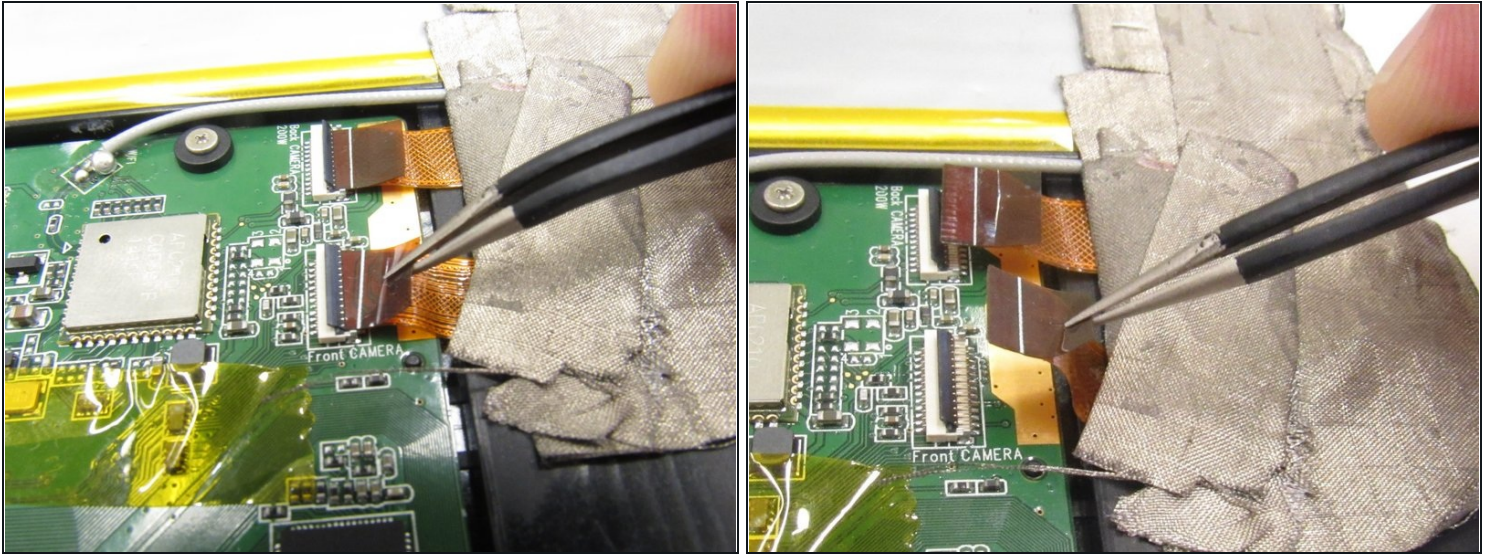
- Lift the back casing away from the rest of the device which should include the exposed circuit board and screen.
- Set the casing aside.

## Step 3 — Screen



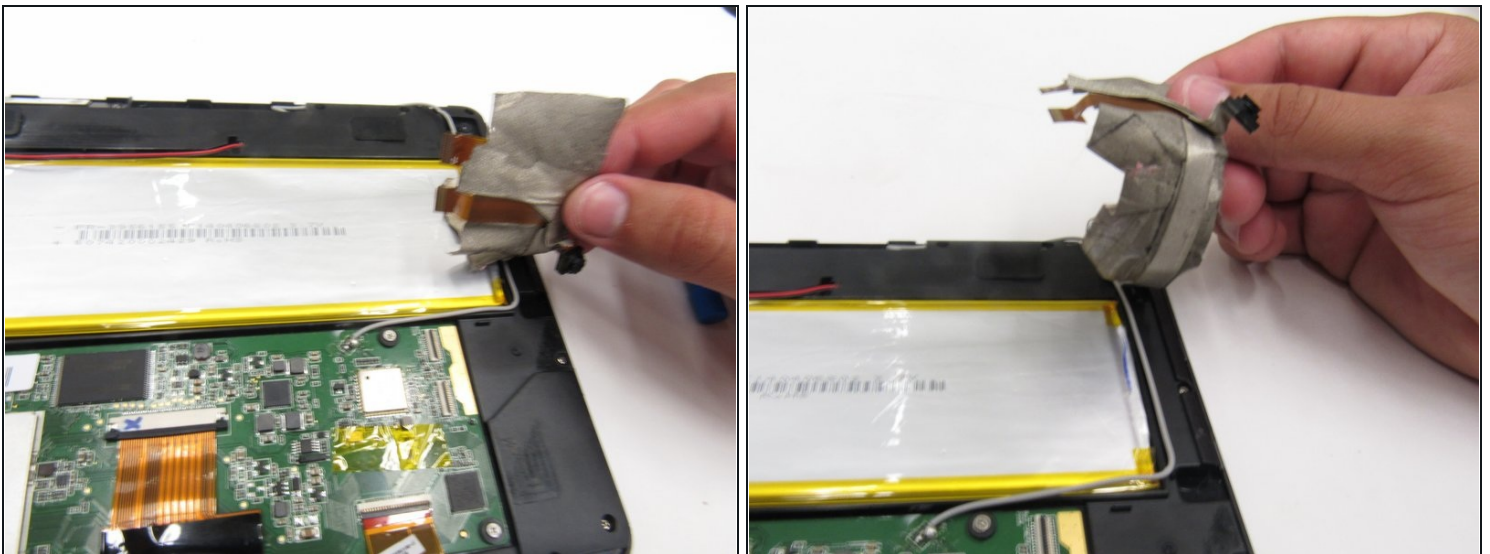
- Use a plastic opening tool to flip up the black strip that is holding the orange camera ribbon near the module on the circuit board labeled "front camera" in white print.
- Repeat this action on the orange camera ribbon near the module on the circuit board labeled "back camera" in white print.

## Step 4



- Use [tweezers](#) to gently pull on both orange camera ribbons in the opposite direction in which they are connected until they disconnect from the modules on the circuit board.

## Step 5



- Peel the grey tape off of the device in order to separate the cameras and their respective ribbons from the rest of the device.

⚠ Do not use excessive force while removing the tape to prevent tears in the ribbons.

## Step 6



- Unscrew fifteen (15) 4mm Phillips #00 screws.

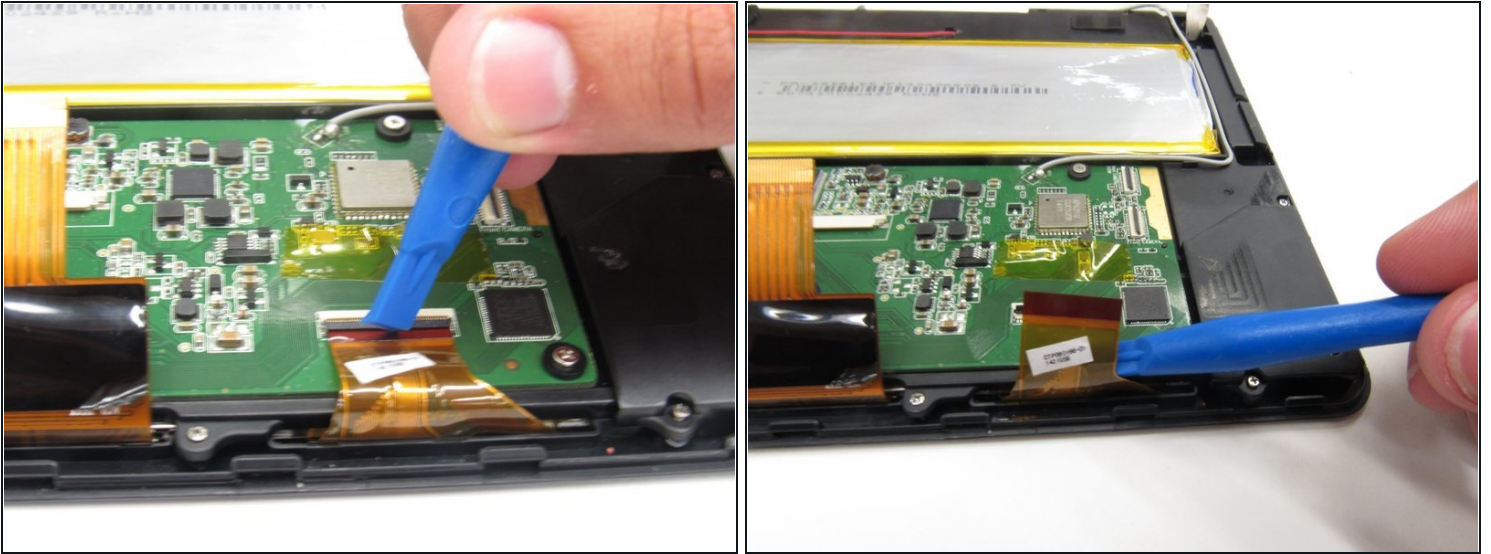
## Step 7



- Wedge a plastic opening tool between the black clip and white module on the large, orange display ribbon in the middle of the circuit board.
- Pull the clip toward you with the plastic opening tool in order to completely disconnect the display ribbon.

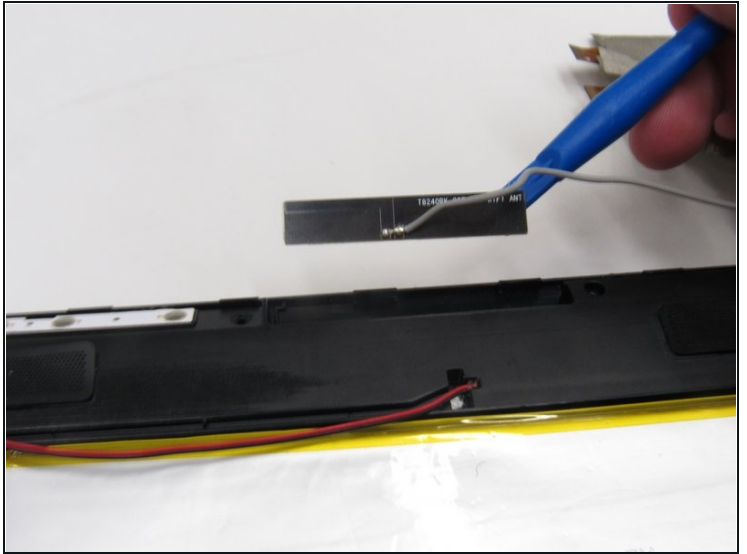
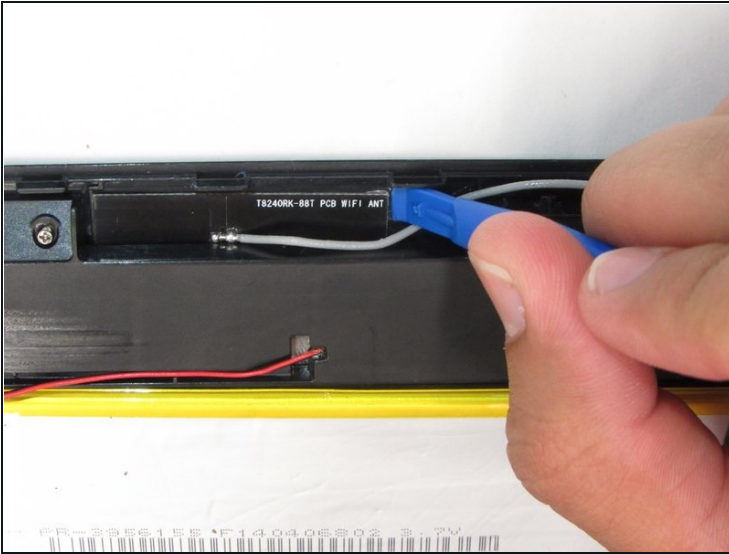
⚠ The black clip holding this ribbon can fly out if enough force is used. Be careful not to lose that black clip.

## Step 8



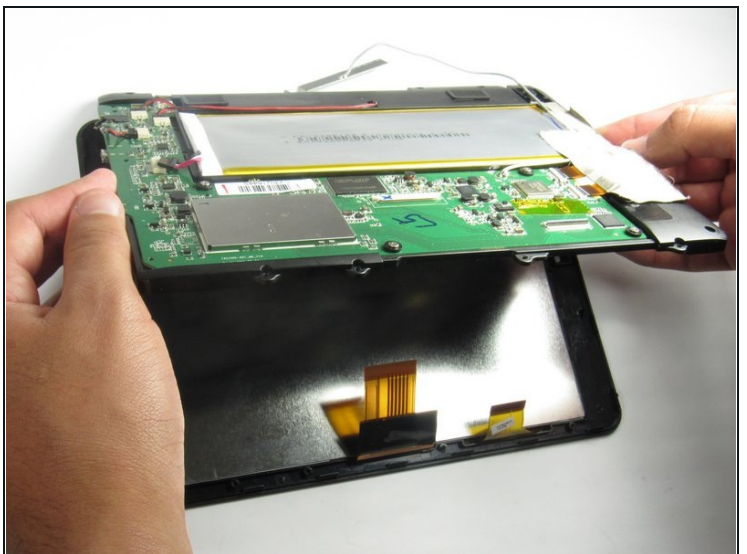
- Use a plastic opening tool to flip up the black strip on the white module which is holding the connection between the other display ribbon and the circuit board.
- Once the black strip has been flipped up, the connection between the module and the ribbon has been unlocked. Use the spudger to pull the ribbon towards you in order to completely disconnect it from the circuit board.

## Step 9



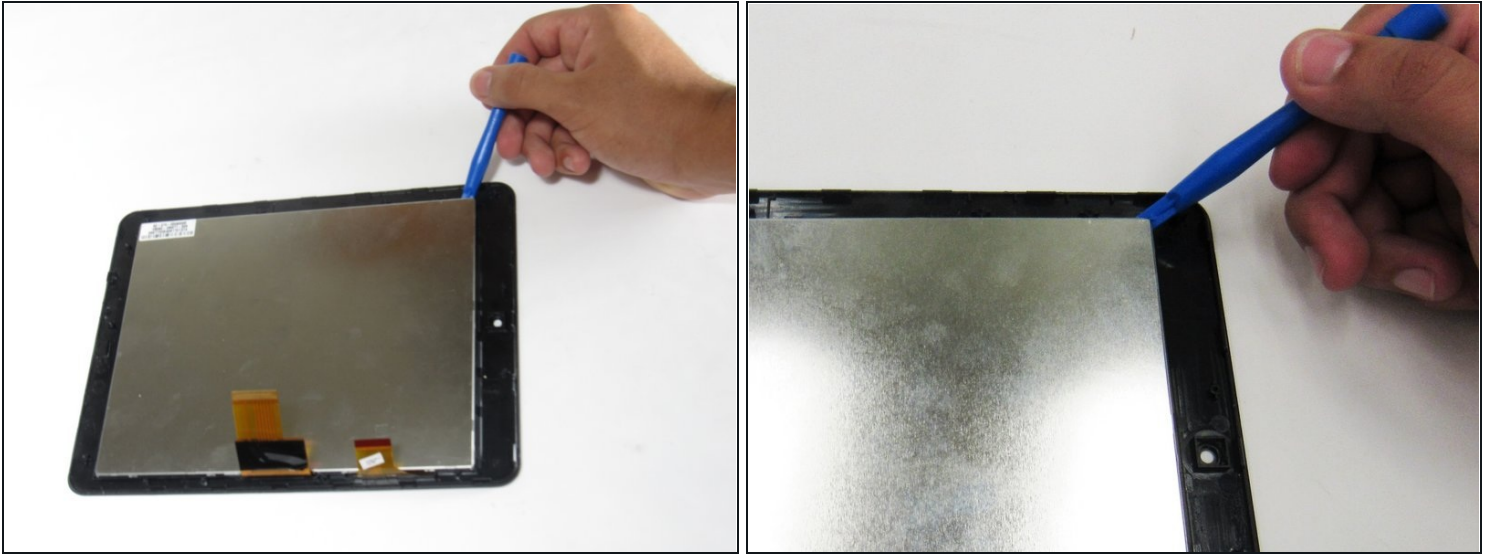
- Pry out the antenna board with a plastic opening tool which is located right above the black internal speakers.
- ⓘ The antenna board is glued to the device, so some force might be needed.

## Step 10



- Lift the circuit board from the screen underneath and set it aside.

## Step 11



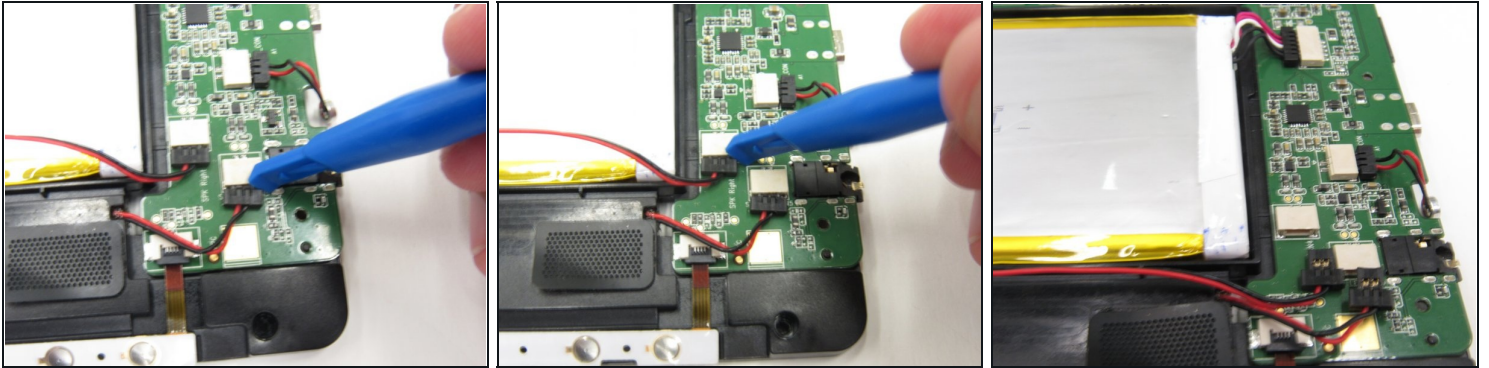
- Use a plastic opening tool to pry the LCD display away from the screen.
- ☑ Make sure the display ribbons are not tucked underneath the LCD display when reassembling the screen and LCD display (as shown in the first image of this step).

## Step 12 — Internal Speakers



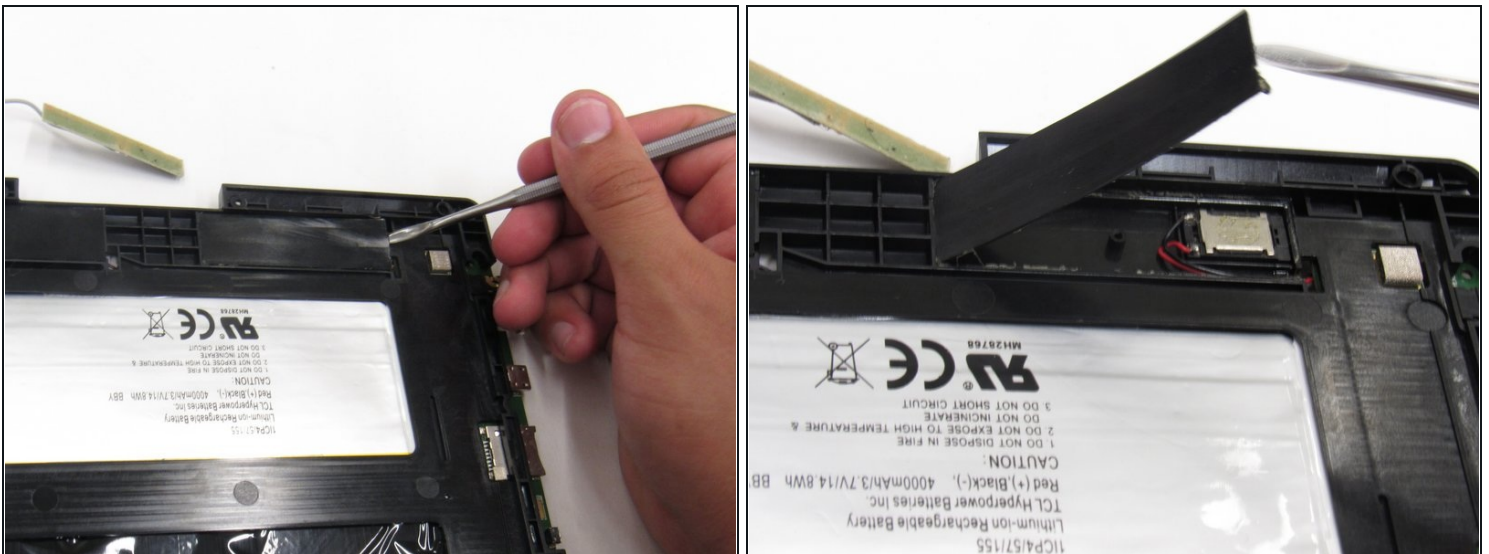
- Turn the circuit board upside down so that the speakers are closest to you.

## Step 13



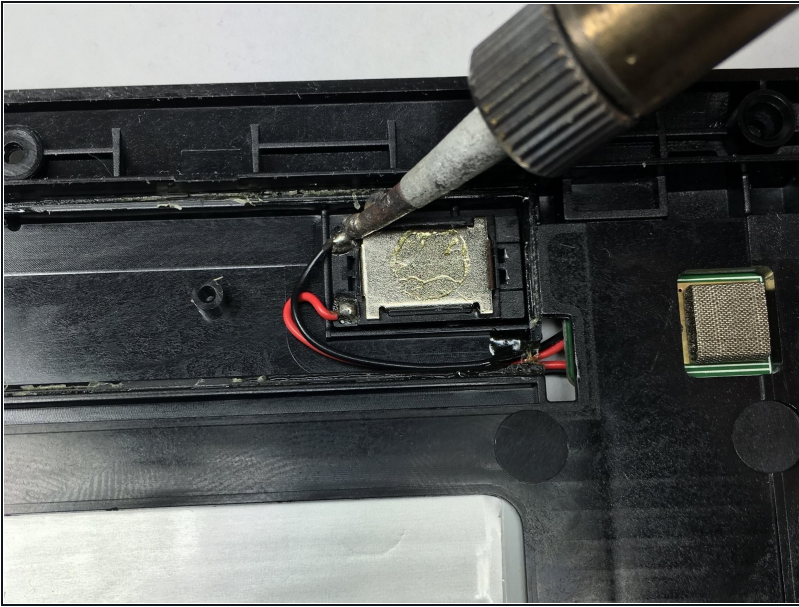
- Wedge a plastic opening tool between the black and white modules on the circuit board to disconnect the wires of the speakers.

## Step 14



- On the back side of the circuit board, use a plastic opening tool to pry open the plastic speaker housing.
- ⚠ Use a metal opening tool for additional prying power, if needed. Metal opening tools should be used as a last resort, as they may cause further damage to the plastic speaker housing.

## Step 15



- Desolder the speaker from its wires in the speaker housing.
- Repeat this step to remove the other speaker.
- ① You can pry the speaker out of the housing before desoldering the wire connections if you wish.

---

To reassemble your device, follow these instructions in reverse order.