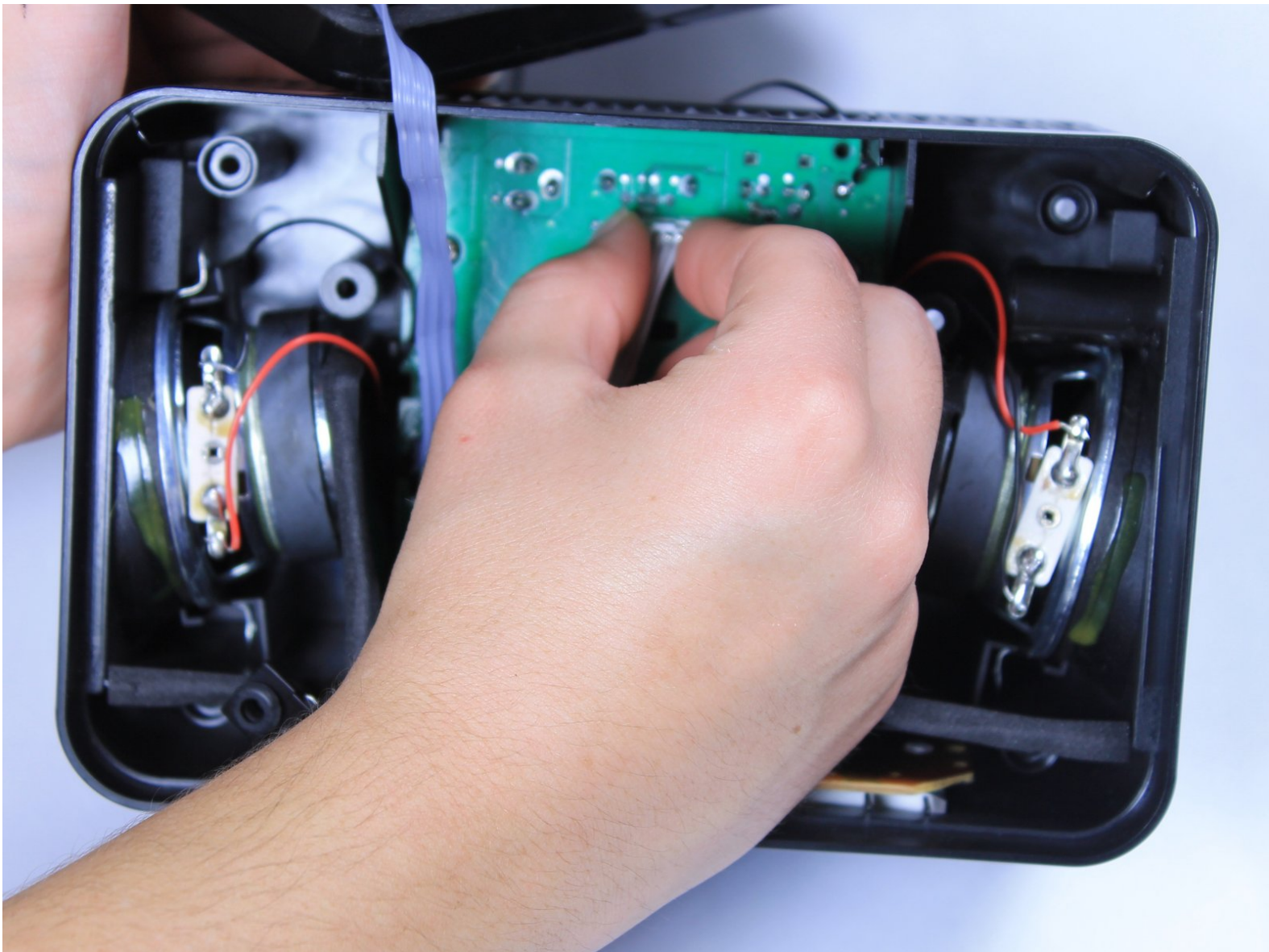




Insignia NS-CLLT01 iPhone Dock Replacement

This guide will explain how to replace your the Apple lightning connector in your clock radio to repair the iPhone dock.

Written By: Morgan Mattingly



INTRODUCTION

If your iPhone dock is broken, or your iPhone is not connecting to the dock, you might need to replace the Apple lightning connector, which connects directly to your iPhone on one end, and to an internal circuit board on the other. You may want to use a magnetic project mat during this process to keep track of and organize the several small screws you will be working with.



TOOLS:

- [Phillips #2 Screwdriver](#) (1)
- [Phillips #1 Screwdriver](#) (1)
- [Phillips #0 Screwdriver](#) (1)
- [iFixit Opening Tools](#) (1)



PARTS:

- [iPhone 5 Lightning Cable](#) (1)

Step 1 — Insignia NS-CLLT01 Top Casing Removal



- Lift the four adhesive covers on each of the corners on the bottom of the clock using a plastic opening tool or your fingernail.

Step 2



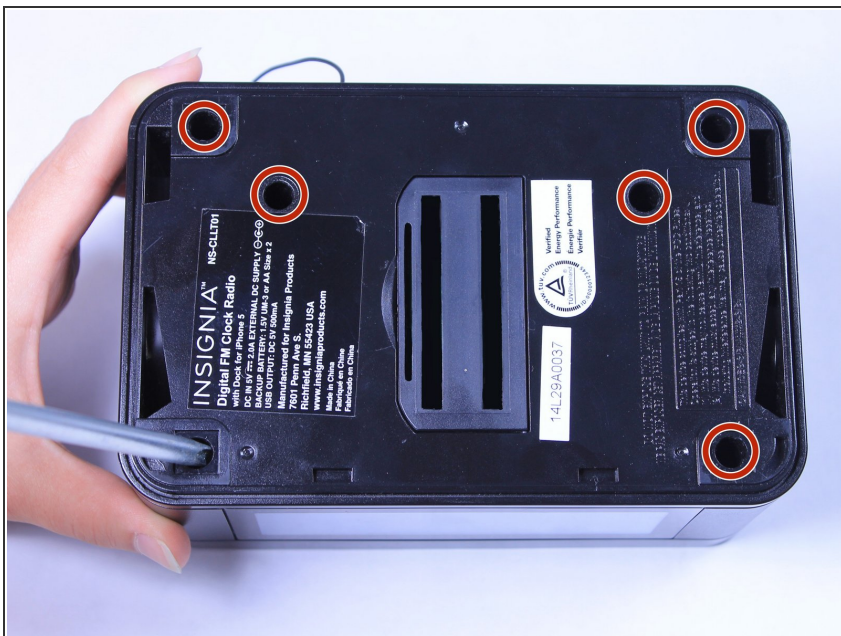
- On the bottom of the clock, use your fingernail to push the battery cover to the right.
- Lift the battery cover up and to the right to reveal the batteries.

Step 3



- Remove the two AA batteries by pressing the end opposite of the spring towards that spring and lifting up.
- Once the batteries are removed, close the cover.

Step 4



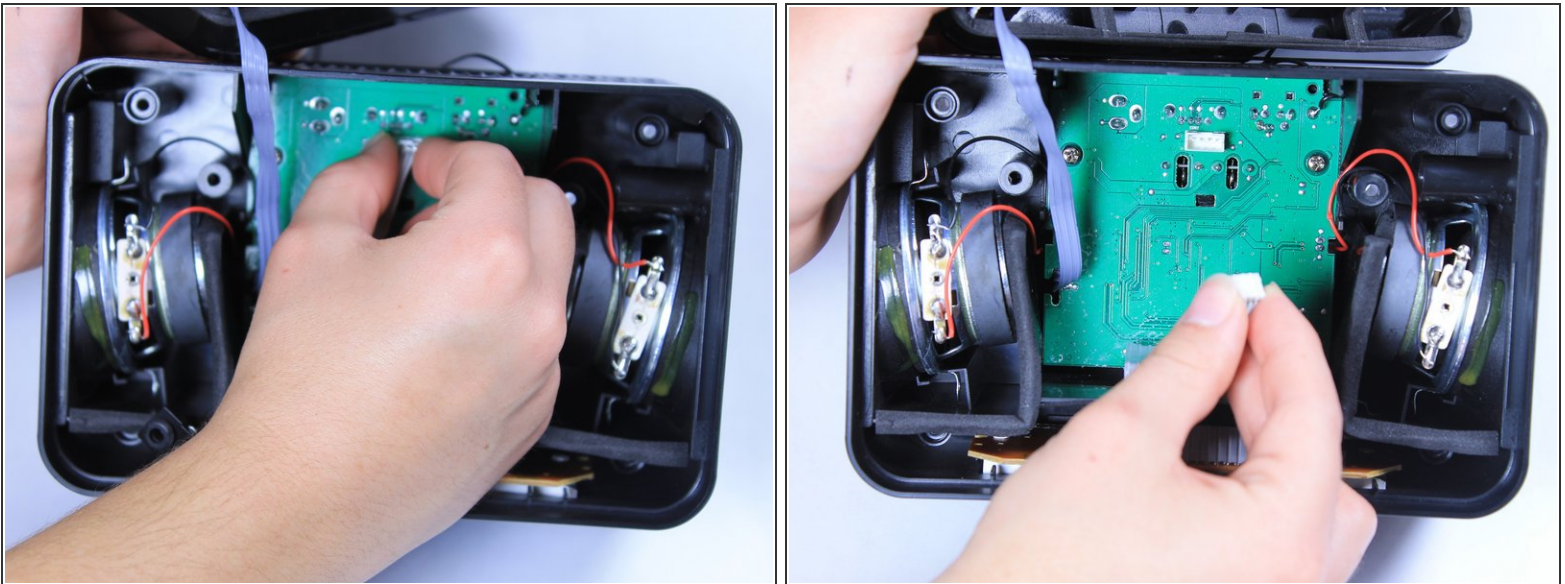
- Use a long Phillips #2 screwdriver to unscrew all six 10mm Phillips screws inside the bottom of the clock.
- Turn over the device to allow the screws to fall out, being careful to catch them so that you do not lose any.
- ⓘ The screws may not come out of the bottom of the clock. As long as you have unscrewed them, the clock can still be opened.

Step 5



- Turn the clock back over.
- Lift the top off of the clock by gripping the back of the iPhone dock and pulling straight up.

Step 6 — iPhone Dock



- Grip the white ribbon cable connector that attaches the lightning cable to the middle of the central circuit board located in the bottom of the clock. Pinch and pull straight up to detach the cable.

Step 7



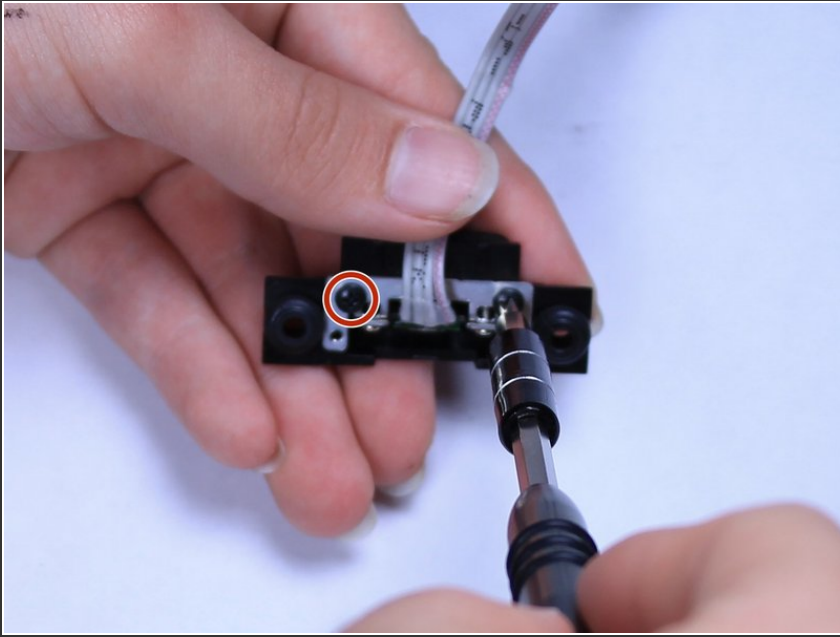
- Using a Phillips #1 screwdriver, unscrew the two 7mm Phillips screws that attach the iPhone dock to the top cover of the clock.

Step 8



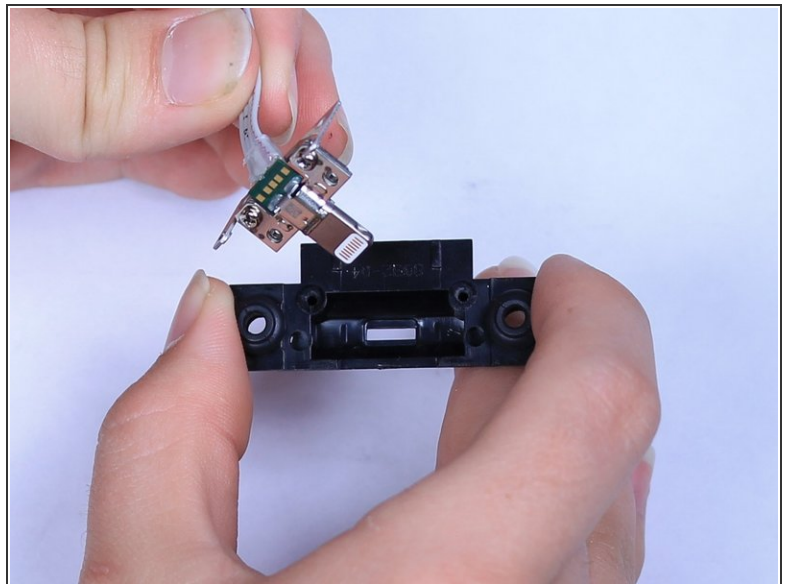
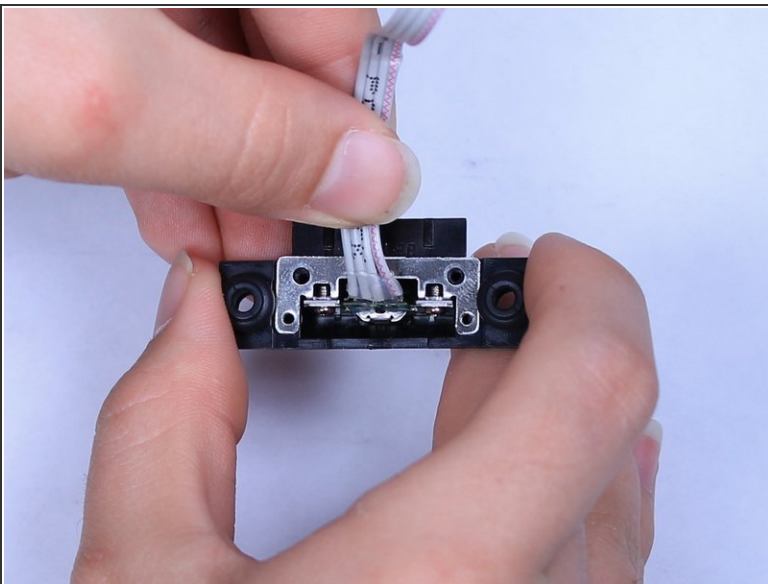
- Remove the plastic casing, which encases the Apple lightning connector, from the top cover of the clock.

Step 9



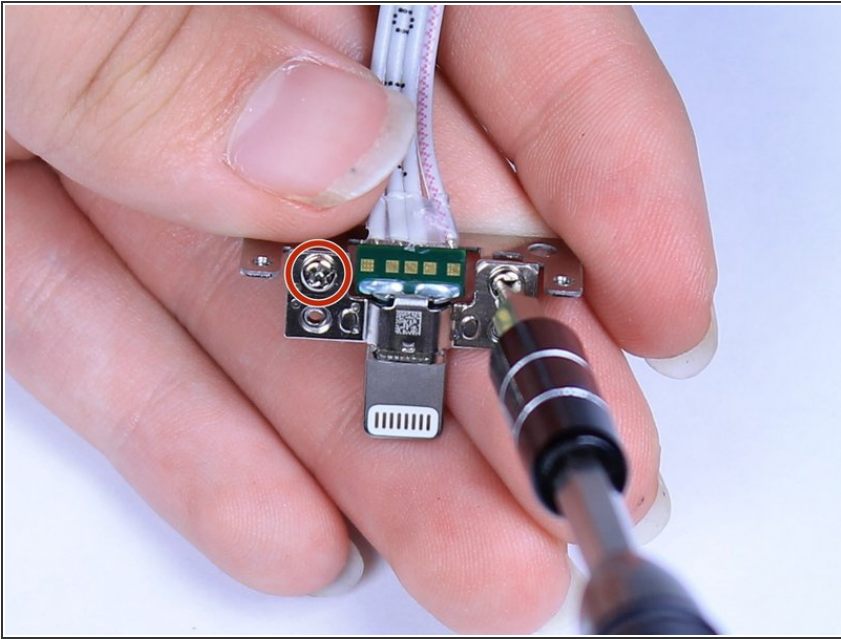
- Using a Phillips #1 screwdriver, unscrew the two 4mm Phillips screws that hold the metal frame around the lightning connector to the plastic casing.

Step 10



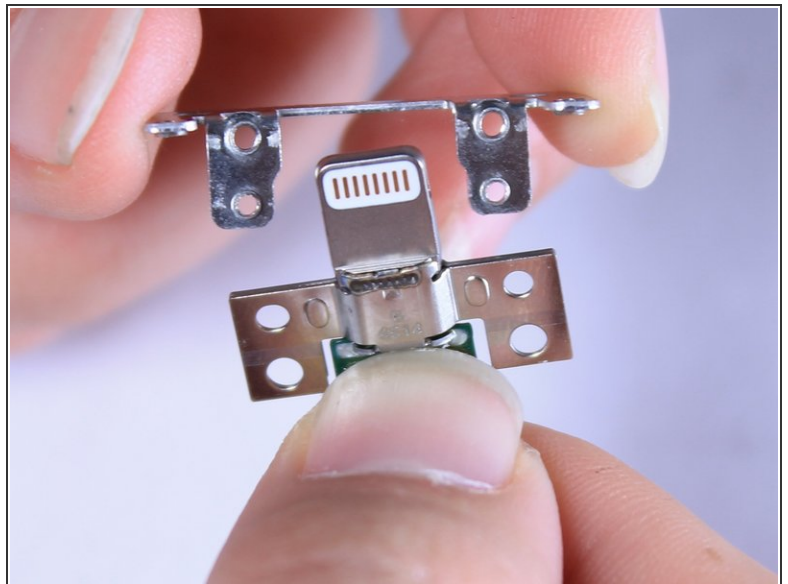
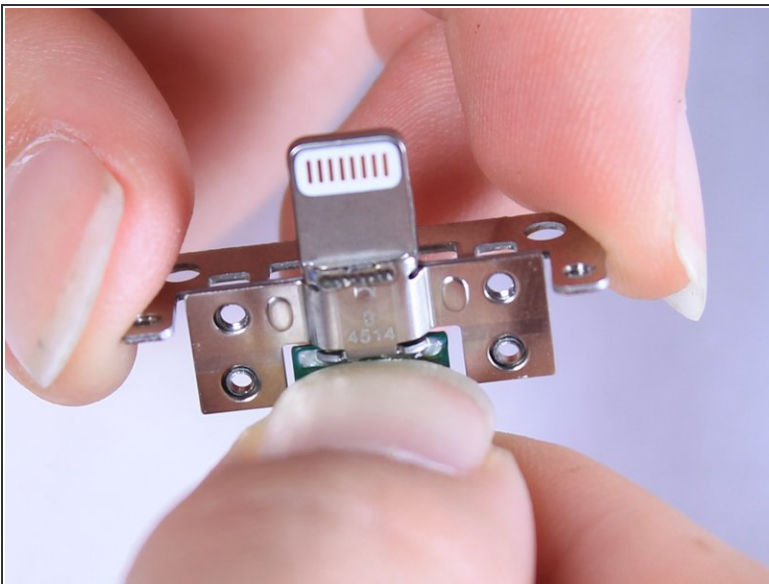
- Remove the metal frame around the lightning connector from its plastic cover.

Step 11



- Using a Phillips #0 screwdriver, unscrew the two 3mm Phillips screws from the metal frame around the lightning cable.

Step 12



- Remove the metal frame from around the lightning connector. This will allow you to replace the lightning connector with a new one.

To reassemble your device, follow these instructions in reverse order.

This document was generated on 2020-11-24 04:29:24 PM (MST).

