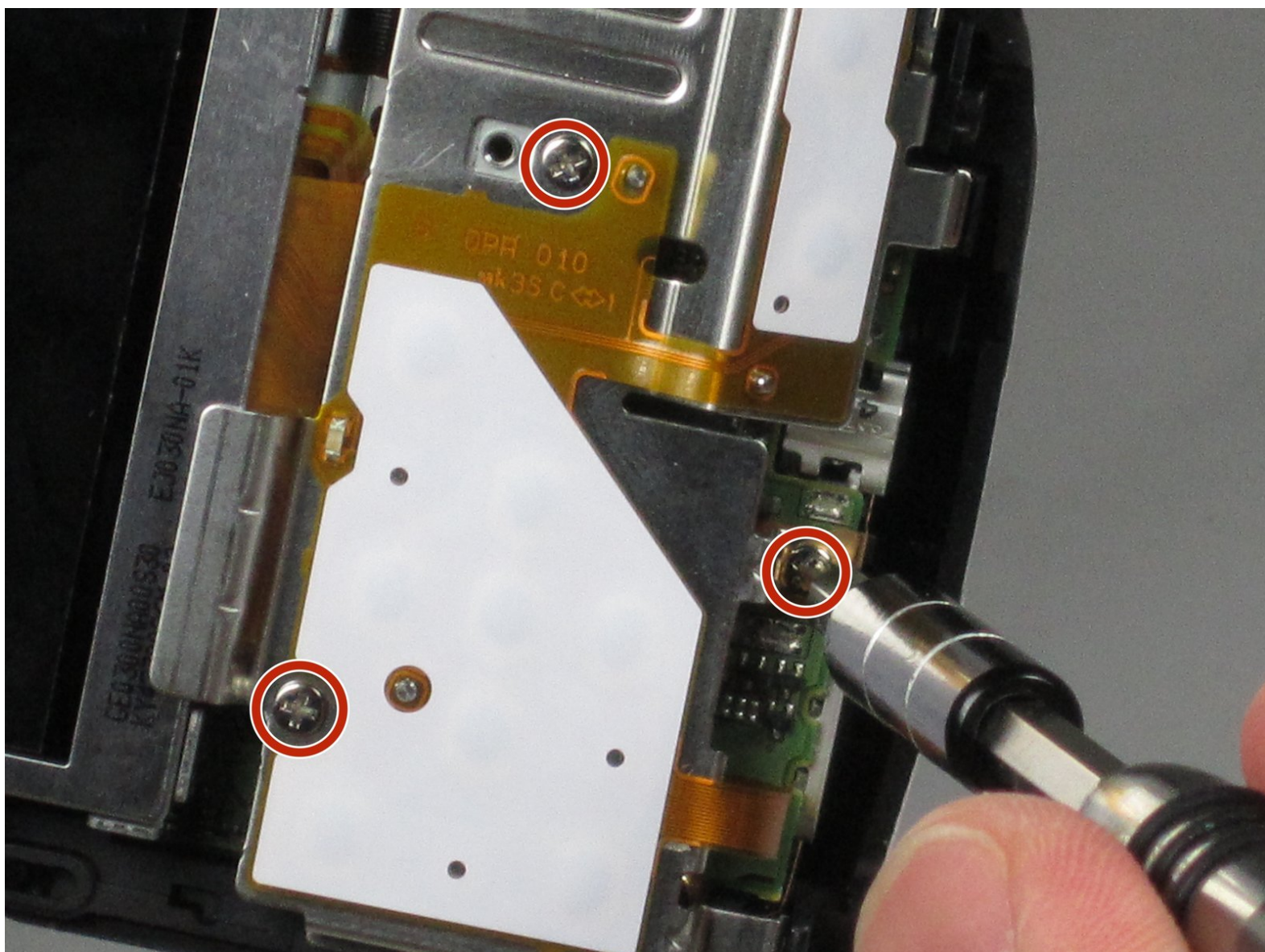




# Canon PowerShot SX520 HS LCD Screen Replacement

This guide will teach you how to remove the LCD screen.

Written By: Lisa Choe



---

## INTRODUCTION

Does your screen flicker or simply not turn on? Replacing the LCD screen may solve the problem.

---



### TOOLS:

- [Phillips #000 Screwdriver](#) (1)
  - [Spudger](#) (1)
-

## Step 1 — Battery



- Using your fingers, slide the battery compartment door to the right until it unlocks.

## Step 2



- Rotate the door along hinges to open.
- Take out the battery with your fingers.



### Step 3 — Back Face



- Remove 2-3.4 mm screws that secure the back panel using a Phillips #000 screwdriver.
- Remove 4-4 mm screws on the left and right sides of the camera using a Phillips #000 screwdriver.

### Step 4



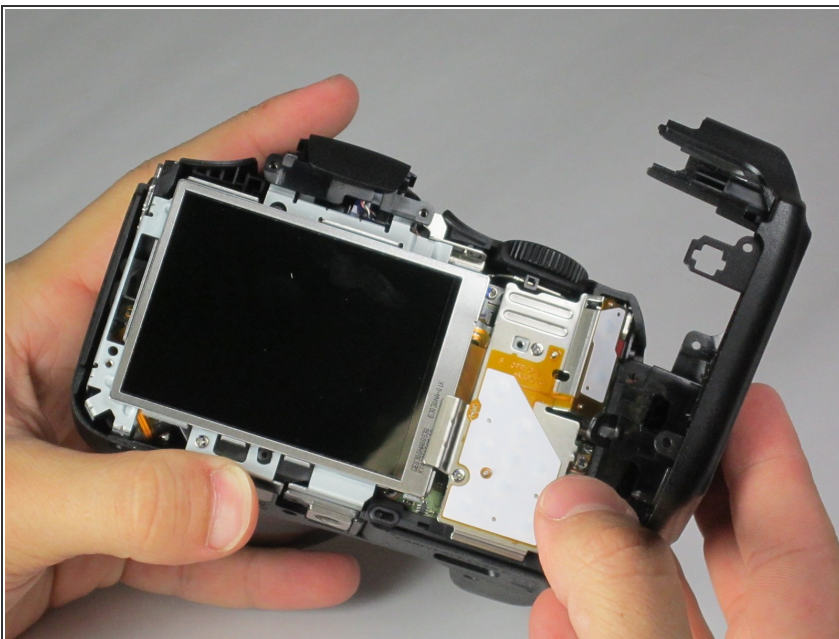
- Remove 2-4 mm screws that secure the bottom of the camera using a Phillips #000 screwdriver.

## Step 5



- Pull back the rubber facing to access the A/V and HDMI output compartment.
- Remove 1-3.4mm screw inside the compartment using a Phillips #000 screwdriver.

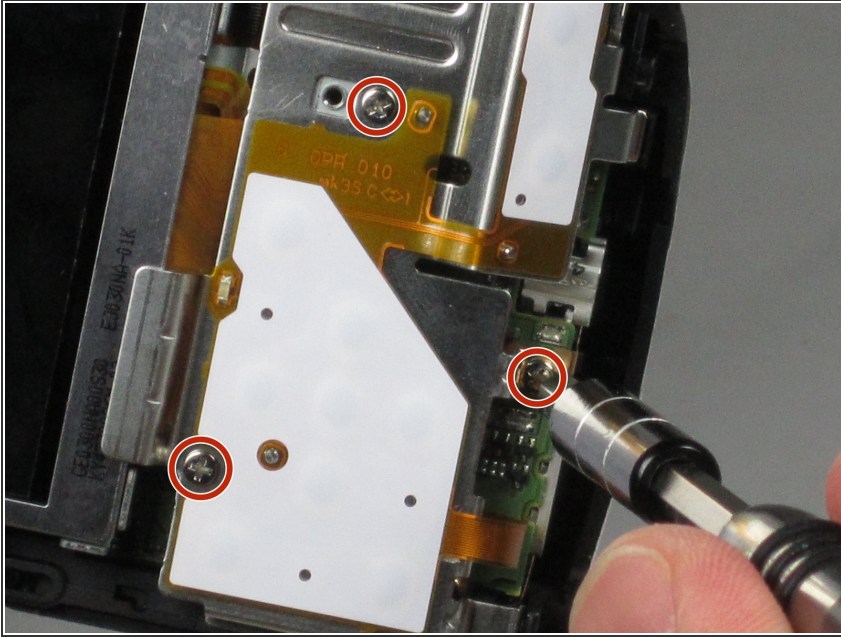
## Step 6



- Once all screws are removed, pull the back facing off with your fingers.

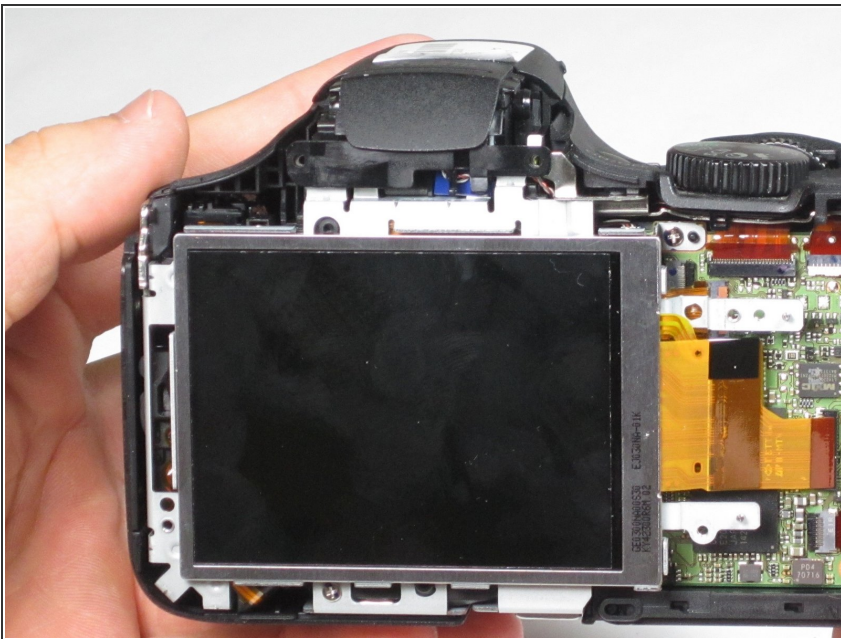


## Step 7 — LCD Screen



- Remove 3-4.4 mm screws that secure the small metal plate using a Phillips #000 screwdriver.

## Step 8



- Carefully pop out the LCD screen with your fingers.

To reassemble your device, follow these instructions in reverse order.