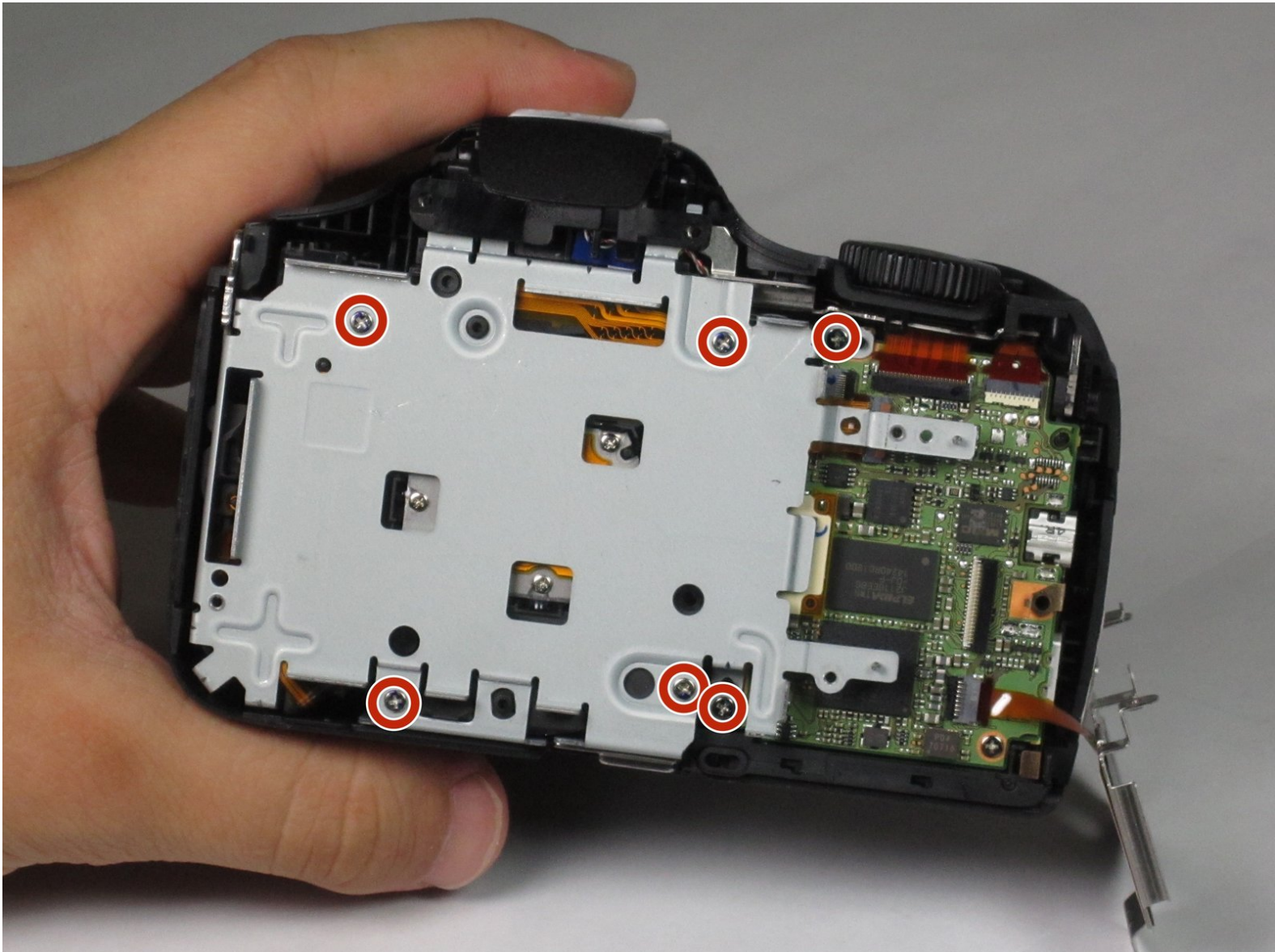




Canon PowerShot SX520 HS Metal Plate Replacement

Prerequisite Only

Written By: Lisa Choe



INTRODUCTION

This guide will show how to remove the metal plate that leads to the inside of the camera. This will allow access to the lens and motherboard.



TOOLS:

- [Phillips #000 Screwdriver](#) (1)
-

Step 1 — Back Face



- Remove 2-3.4 mm screws that secure the back panel using a Phillips #000 screwdriver.
- Remove 4-4 mm screws on the left and right sides of the camera using a Phillips #000 screwdriver.

Step 2



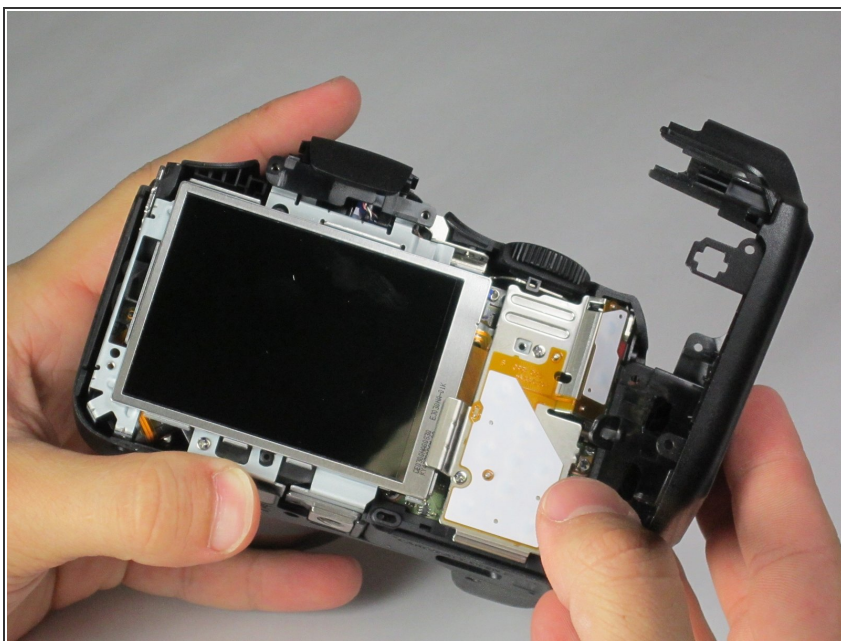
- Remove 2-4 mm screws that secure the bottom of the camera using a Phillips #000 screwdriver.

Step 3



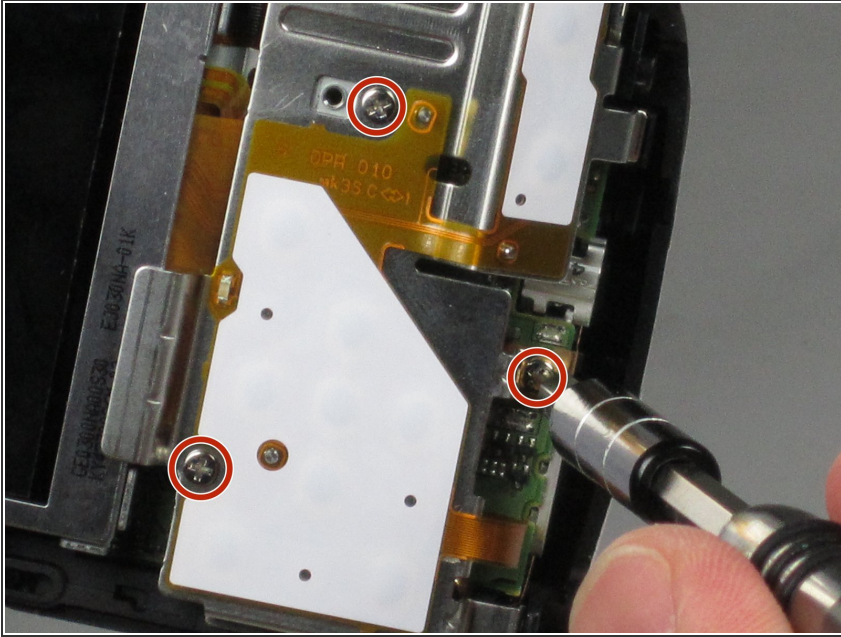
- Pull back the rubber facing to access the A/V and HDMI output compartment.
- Remove 1-3.4mm screw inside the compartment using a Phillips #000 screwdriver.

Step 4



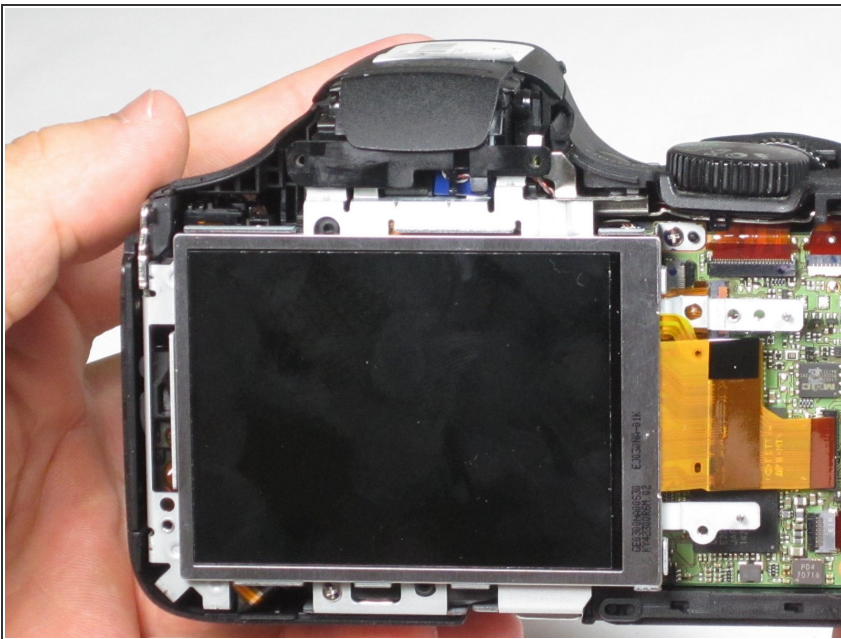
- Once all screws are removed, pull the back facing off with your fingers.

Step 5 — LCD Screen



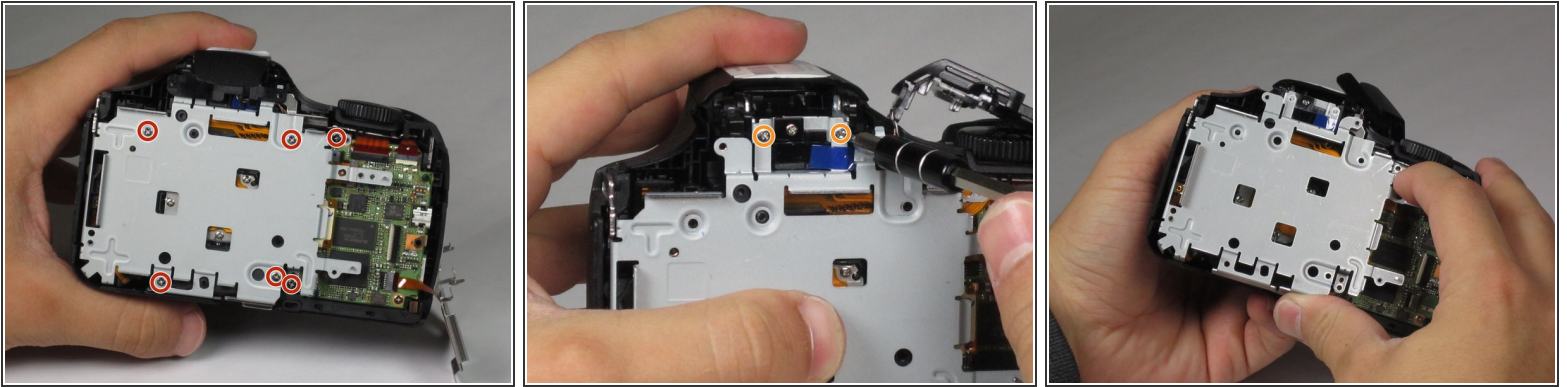
- Remove 3-4.4 mm screws that secure the small metal plate using a Phillips #000 screwdriver.

Step 6



- Carefully pop out the LCD screen with your fingers.

Step 7 — Metal Plate



- Remove 6-4.4 mm screws that secure the metal cover using a Phillips #000 screwdriver.
- Remove 2-2.5 mm screws that secure the back panel using a Phillips #000 screwdriver.
- After all 8 screws are removed, pull the metal plate out with your fingers.

To reassemble your device, follow these instructions in reverse order.