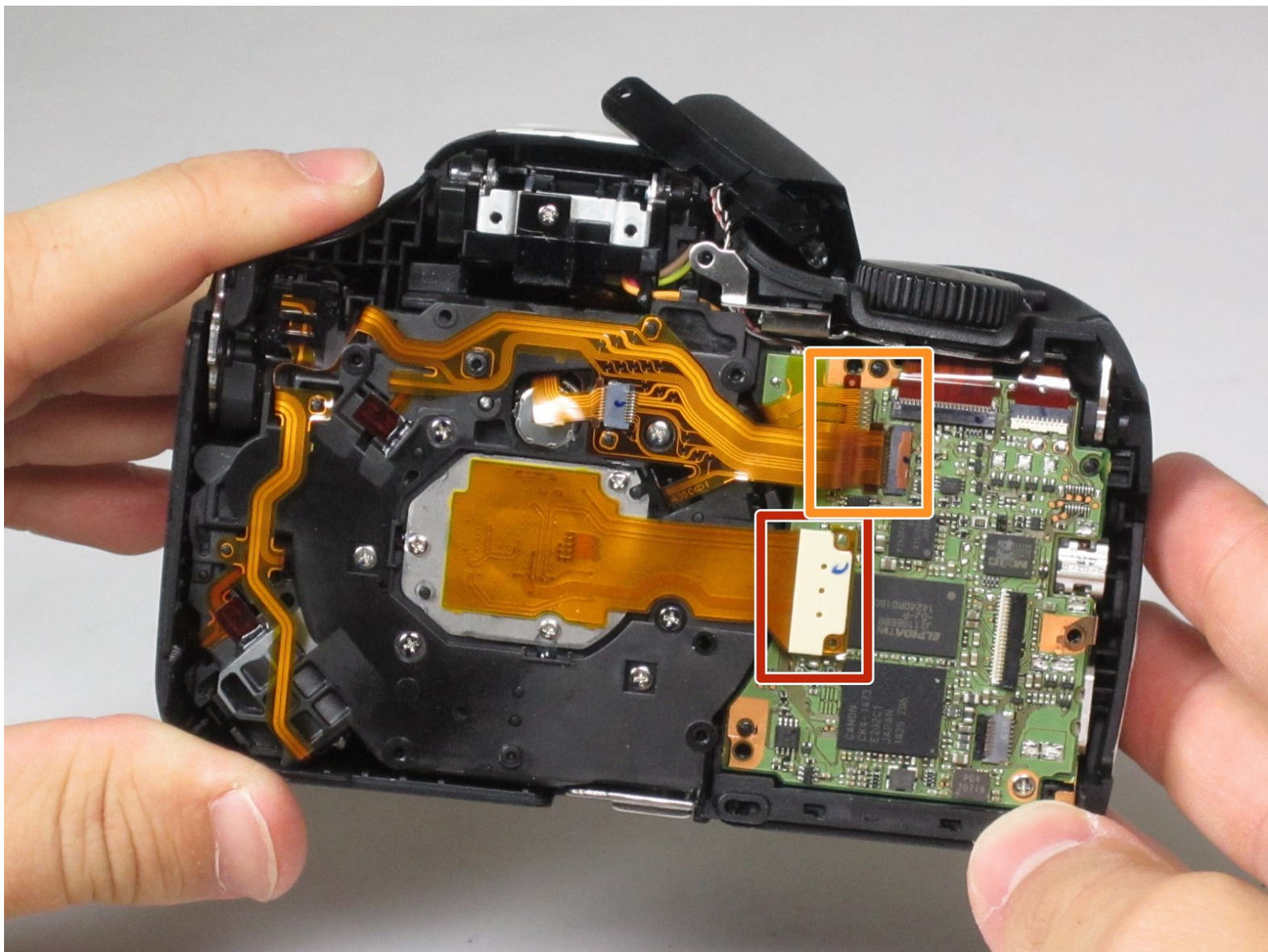




Canon PowerShot SX520 HS Lens Replacement

This guide will teach you how to remove the lens of the camera.

Written By: Lisa Choe



INTRODUCTION

If you crack the lens of your camera or if it is not functioning properly, this guide may be for you. This guide will help you remove and replace the lens.



TOOLS:

- [Phillips #000 Screwdriver](#) (1)
-

Step 1 — Battery



- Using your fingers, slide the battery compartment door to the right until it unlocks.

Step 2



- Rotate the door along hinges to open.
- Take out the battery with your fingers.

Step 3 — Back Face



- Remove 2-3.4 mm screws that secure the back panel using a Phillips #000 screwdriver.
- Remove 4-4 mm screws on the left and right sides of the camera using a Phillips #000 screwdriver.

Step 4



- Remove 2-4 mm screws that secure the bottom of the camera using a Phillips #000 screwdriver.

Step 5



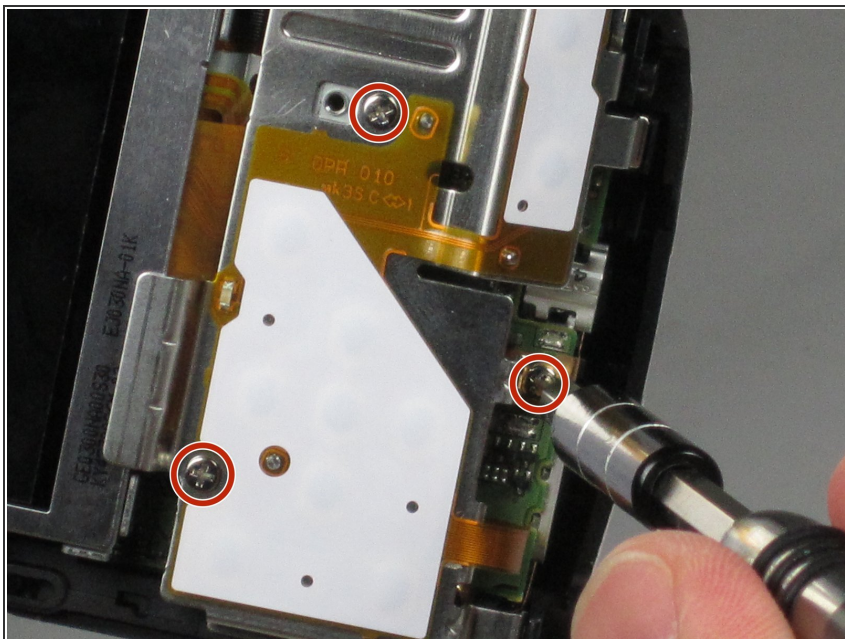
- Pull back the rubber facing to access the A/V and HDMI output compartment.
- Remove 1-3.4mm screw inside the compartment using a Phillips #000 screwdriver.

Step 6



- Once all screws are removed, pull the back facing off with your fingers.

Step 7 — LCD Screen



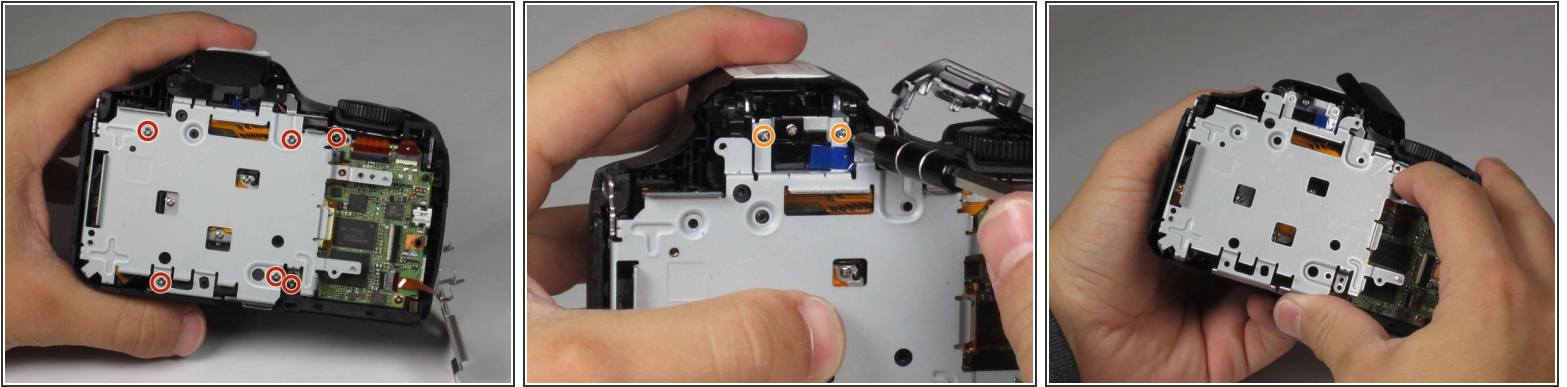
- Remove 3-4.4 mm screws that secure the small metal plate using a Phillips #000 screwdriver.

Step 8



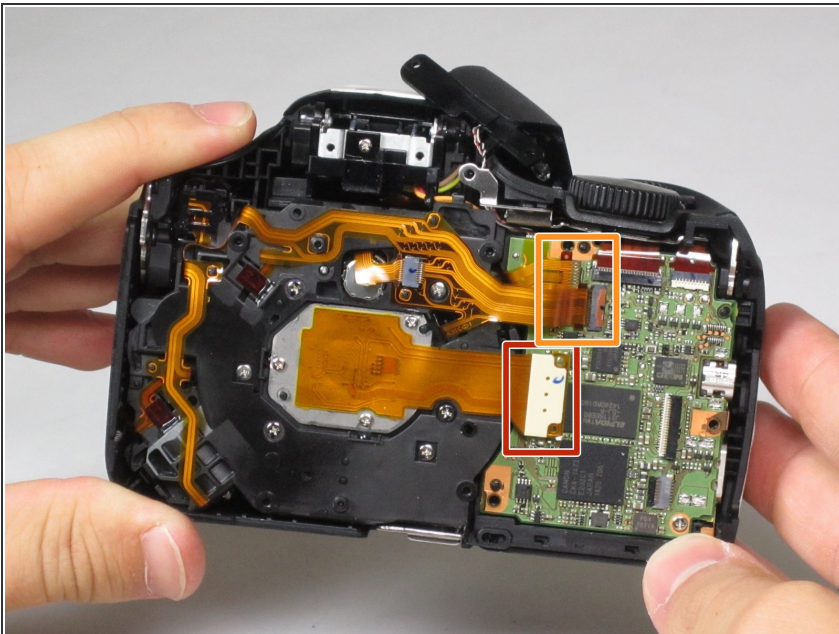
- Carefully pop out the LCD screen with your fingers.

Step 9 — Metal Plate



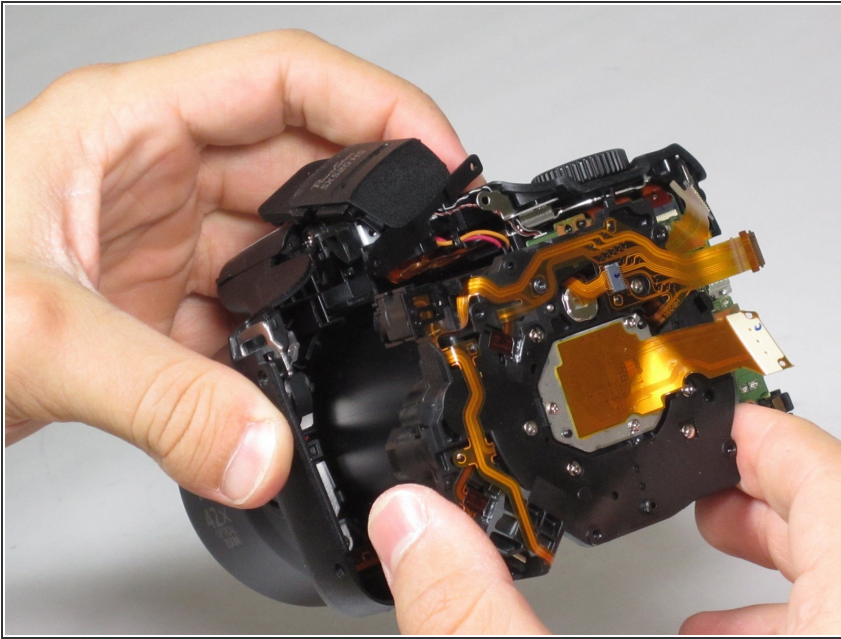
- Remove 6-4.4 mm screws that secure the metal cover using a Phillips #000 screwdriver.
- Remove 2-2.5 mm screws that secure the back panel using a Phillips #000 screwdriver.
- After all 8 screws are removed, pull the metal plate out with your fingers.

Step 10 — Lens



- Unclip the large cable by pulling up on the metal part with your finger.
- Slide out the 2 smaller cables with your fingers.

Step 11



- Lift up the lens by grabbing the sides with your fingers.

To reassemble your device, follow these instructions in reverse order.