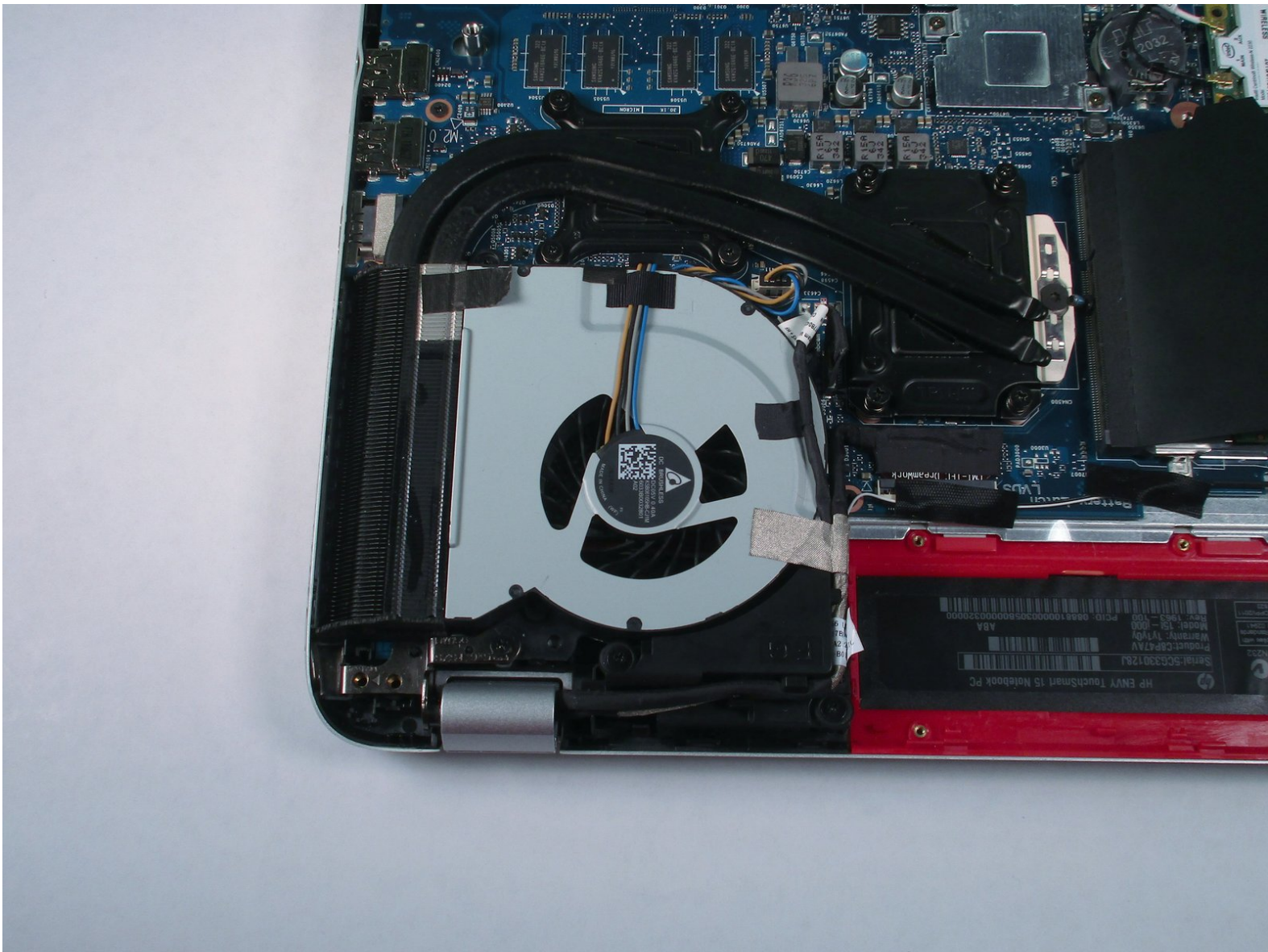




# HP Envy TouchSmart 15 Fan Replacement

You might need to replace the fan if your...

Written By: Ramon Villadonga



---

## INTRODUCTION

You might need to replace the fan if your laptop overheats, or you hear loud grinding noises from inside the case. Alternatively, if you hear no noise from inside the case because the fan is broken.

---



### TOOLS:

- [Phillips #1 Screwdriver](#) (1)
  - [Phillips #00 Screwdriver](#) (1)
  - [iFixit Opening Tool](#) (1)
  - [Phillips #0 Screwdriver](#) (1)
-

## Step 1 — Battery



- Press the battery release tab and the battery will pop up.

## Step 2



- Remove the battery from the laptop, it will come out easily.



### Step 3 — Accessory Plate



- Remove the single screw holding the accessory plate. This is a PH0 2.0x2.5 screw.

### Step 4



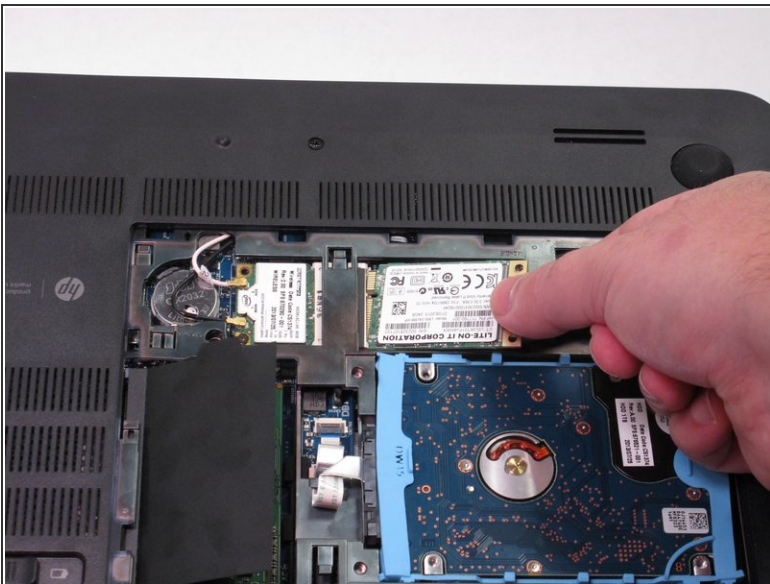
- Pry the accessory plate up from the back of the laptop by applying force upwards where the screw was removed.

## Step 5 — Solid State Drive



- Remove the PM 2.0x2.5 screw with the PH#0 Screwdriver attachment that is shown at the corner of the Solid State Drive.
- After you have removed the screw, the Solid State Drive should lift up.

## Step 6



- Very carefully, remove the SSD by gently pulling away from the SSD socket.

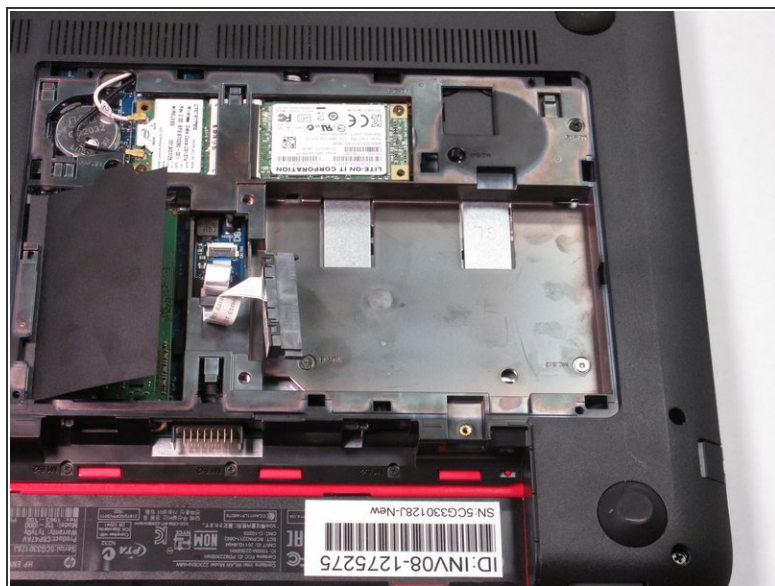


## Step 7 — Hard Drive



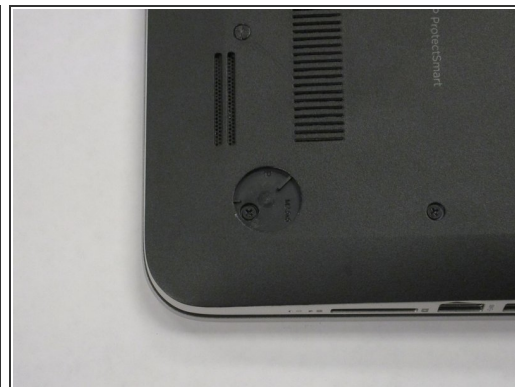
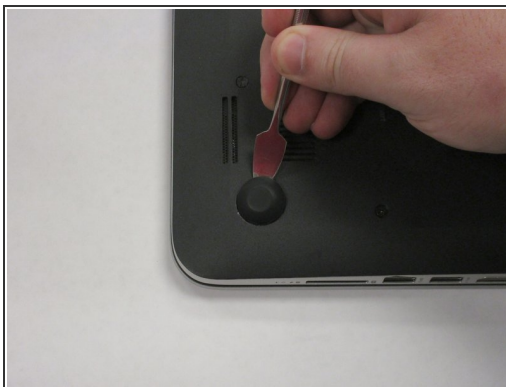
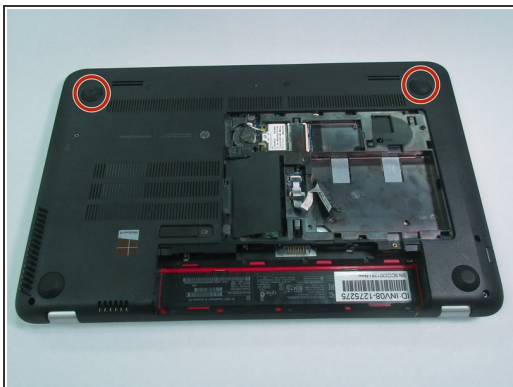
- Use the plastic opening tool to pry the hard drive away from the board. Notice that there is a slit centered at the back of where the hard drive is sitting. This is where you'll insert the plastic opening tool as shown in the photo. Finally, pry with the plastic opening tool to remove the hard drive.

## Step 8



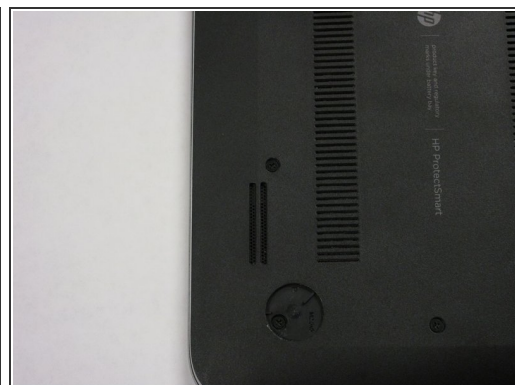
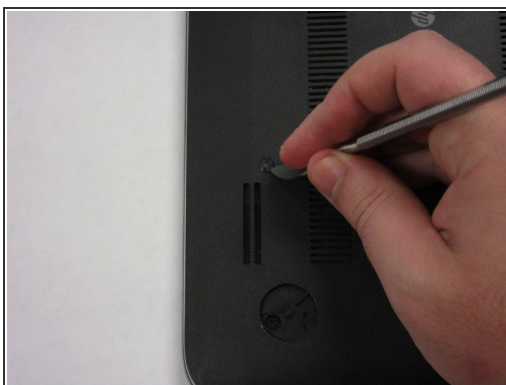
- Firmly grasp the connector's base as shown and pull to remove from the hard drive.

## Step 9 — Back Plate



- Remove the highlighted rubber stoppers with a metal spudger as pictured. They should expose a screw that you will need to remove in a later step.

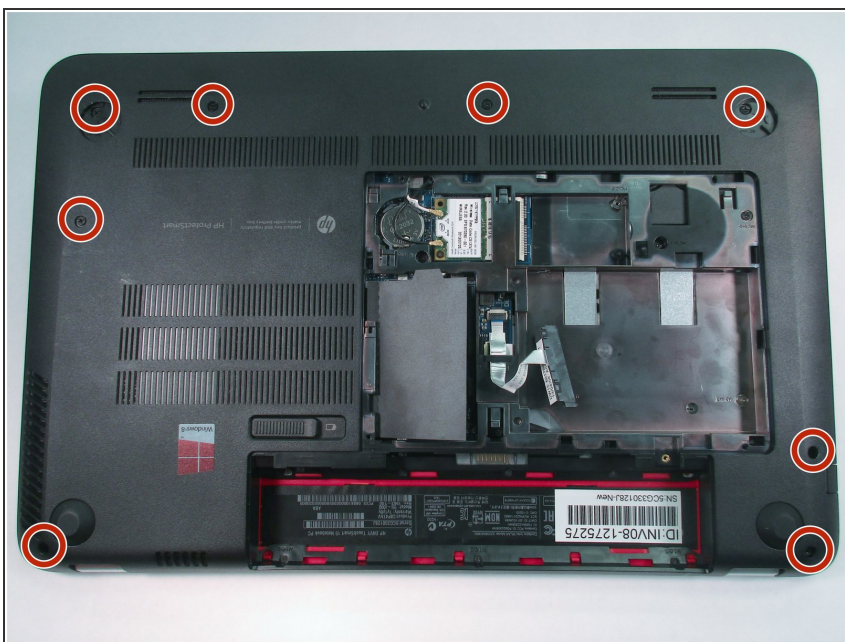
## Step 10



- Remove plastic cover highlighted. It should expose a screw that you will need in a later step.

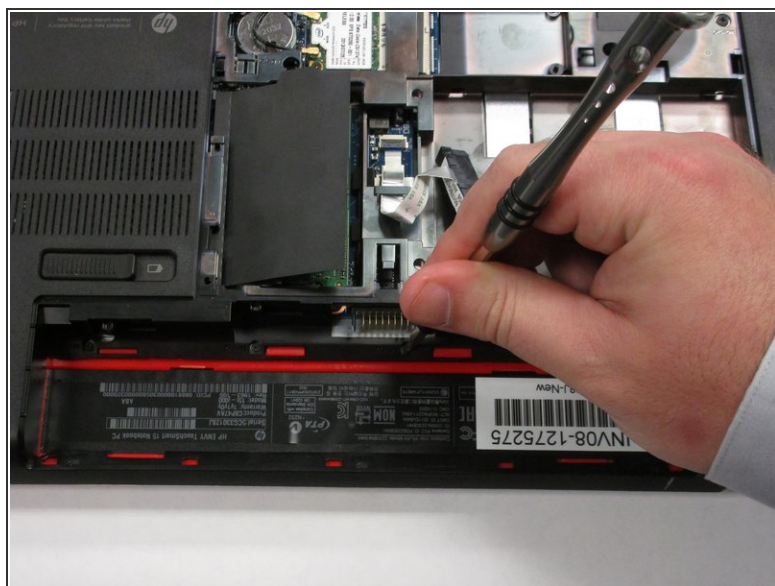
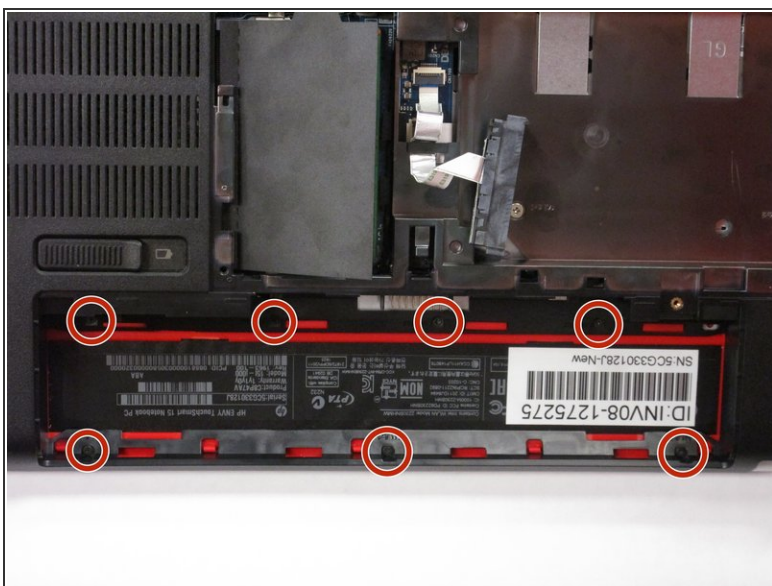


## Step 11



- Remove all highlighted screws with PH 1 screwdriver. These screws are PM 2.0x2.5.

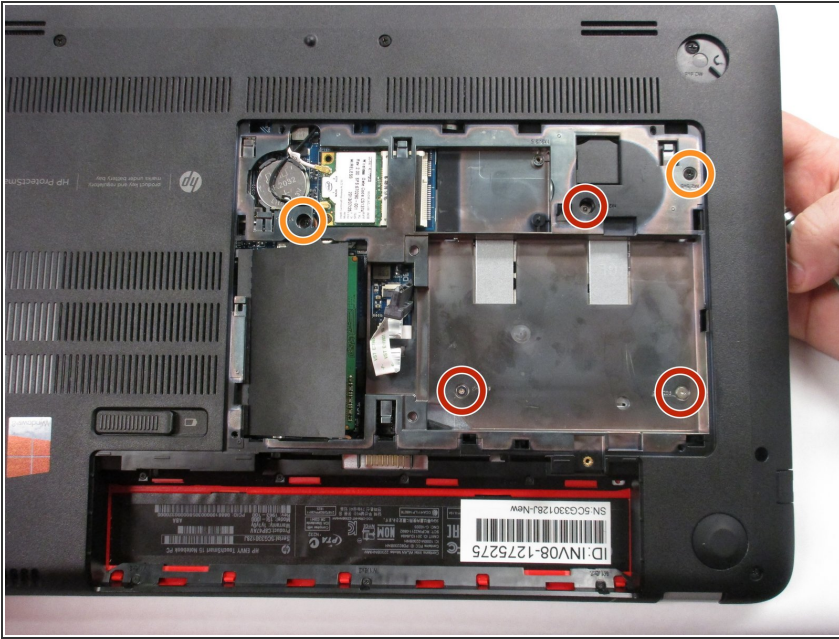
## Step 12



- Remove all highlighted screws from the battery access area. These are PM 1.5x2.0 screws

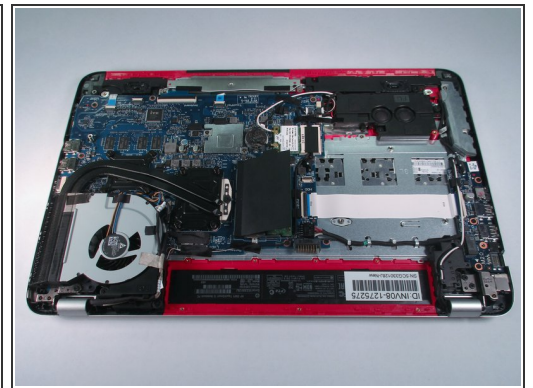
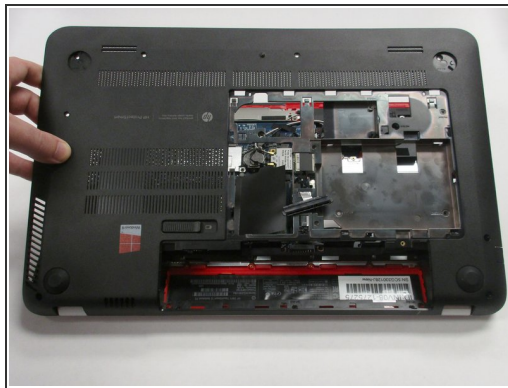


## Step 13



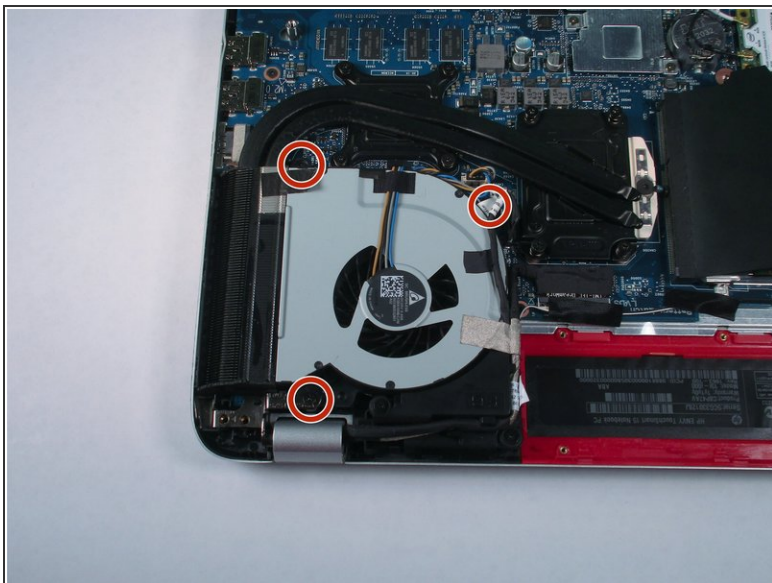
- Remove screws highlighted with PH1 screwdriver from accessory plate area. These are PM 2.5x3.0 screws
- Remove screws highlighted with PH1 screwdriver from accessory plate area. These are PM 2.5x4.5 screws

## Step 14



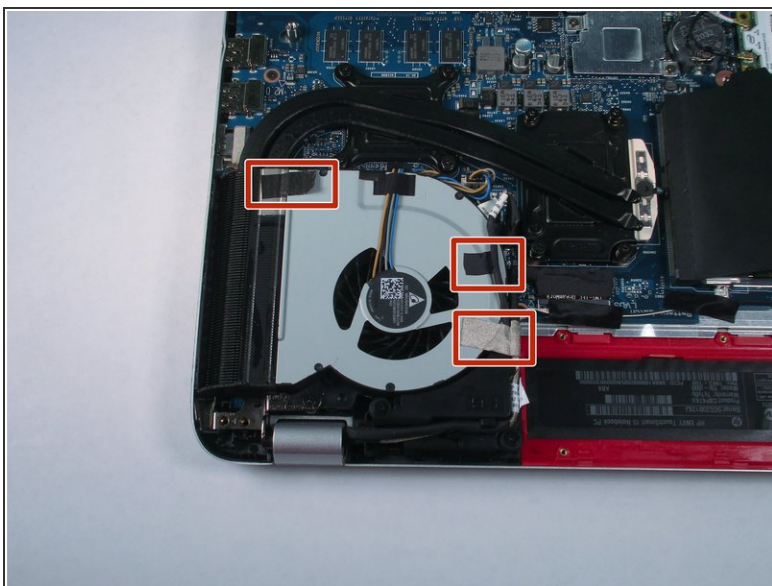
- Pry open back plate area with plastic opening tool. The back plate should pry open with relative ease. If you feel some resistance at any point please refer to steps 2-5 because a screw has probably been missed.

## Step 15 — Fan



- There are 3 screws holding the fan in place. These are PM 2.5x4.5 screws

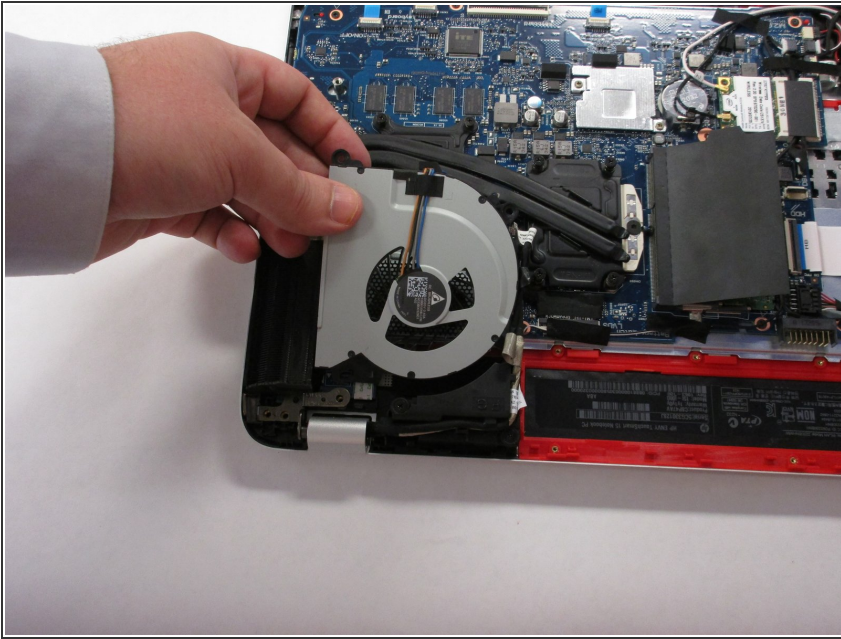
## Step 16



- There are 3 strips of tape. Remove them with your hand.

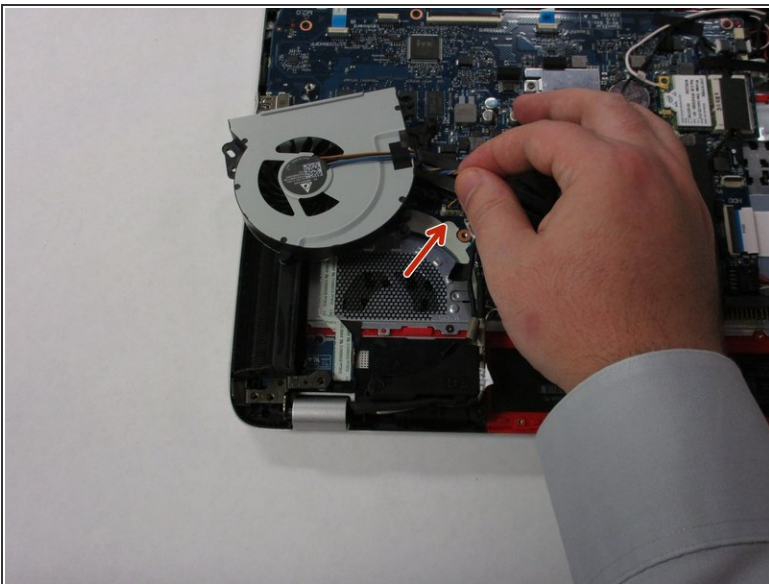


## Step 17



- Remove the fan by sliding it out and pulling it upwards. Set the fan off to the side to reveal the connector.

## Step 18



- Remove the black connector from the white insert shown at the center of the picture just below the fingers pinching the black connector.
- The connector will come out straight up.

To reassemble your device, follow these instructions in reverse order.