



Trio Stealth G4 Volume Buttons Replacement

This guide will show step by step instructions on how to replace broken or faulty volume buttons in your Trio Stealth G4. This specific repair may be necessary if pressing the volume buttons does not increase or decrease the volume of audio.

Written By: Matt Arnold



INTRODUCTION

The volume buttons allow you to control the volume of audio played by the device, either through the speaker or headphones. The replacement of the volume buttons may be necessary if the tablet does not respond when the volume buttons are pressed by either raising or lowering the volume of sound.

The disassembly is very simple. You will need only basic tools and will not be required to perform any specialized tasks.



TOOLS:

- [iFixit Opening Tools](#) (1)
 - [Spudger](#) (1)
-

A black, rectangular electronic device, possibly a portable media player or a small tablet, lying on a light gray surface. The device has rounded corners and a matte finish. In the center, the word "trio:)" is printed in white, lowercase letters. At the bottom, there is a small white label with technical specifications and a recycling symbol.

- Flip your tablet over so that the back panel is facing up.



- Use a plastic opening tool to gently pry the back panel assembly apart from the front casing.
- Start on one edge of the device by inserting the plastic opening tool between the back panel and the front casing using a gentle rocking motion.

Step 3



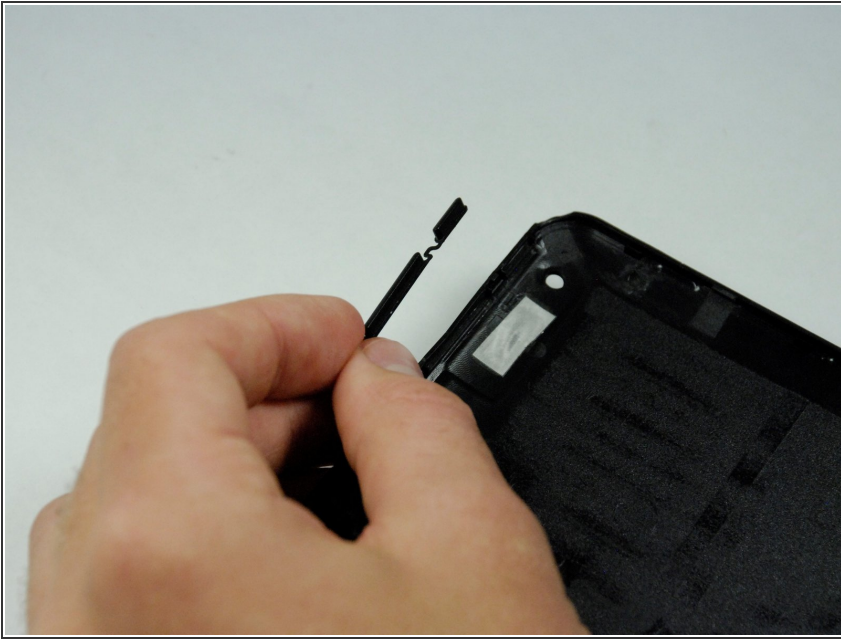
- Once you have successfully separated one edge of the back panel from the front casing, slide the plastic opening tool along the other edges to detach them as well.
- ❗ The latches keeping the back panel attached to the front casing can sometimes be a little difficult to separate, so don't be afraid to use some force.

Step 4



- Remove the back panel from the rest of the tablet and set it aside.

Step 5



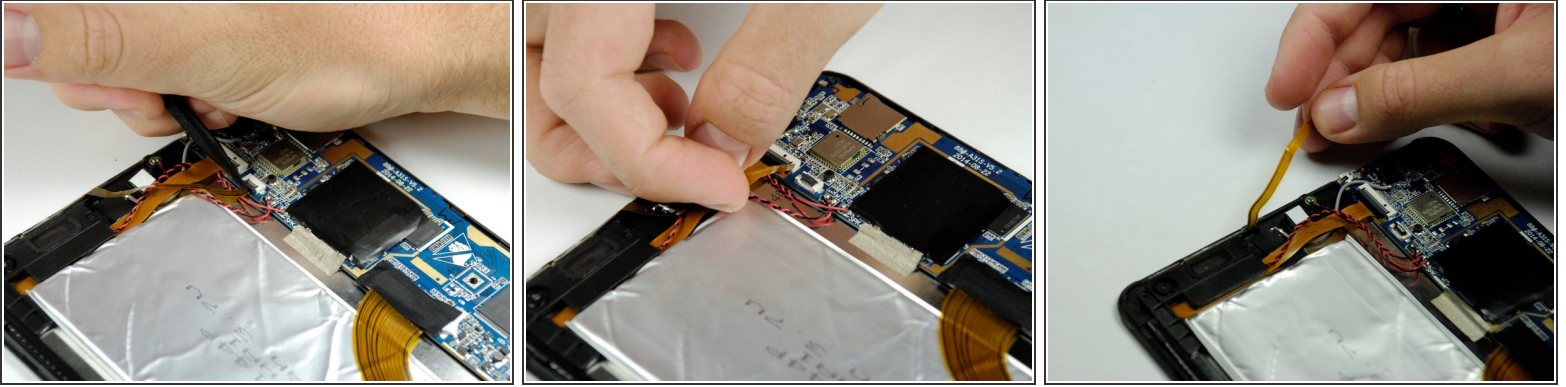
- The plastic volume button cover may fall out when you remove the back panel. Set it aside.

Step 6 — Volume Buttons



- Remove the yellow tape covering the set of wires located near the upper right corner of the battery.

Step 7



- Wedge a spudger underneath the black flap on the zero insertion force (ZIF) connector and flip it up.
- Once the flap is up, use your fingers to disconnect the end of the ribbon wire from the connector.

Step 8



- Use your fingers to carefully peel the volume sensors away from the top of the plastic L-shaped speaker housing.

To reassemble your device, follow these instructions in reverse order.