



# Nikon Coolpix S4100 Functional Button Plate Replacement

If you need to replace the video record,...

Written By: Matthew Willis



# INTRODUCTION

If you need to replace the video record, playback, or camera mode buttons, then you must follow these steps to replace the metal plate with the mounted wiring.

## TOOLS:

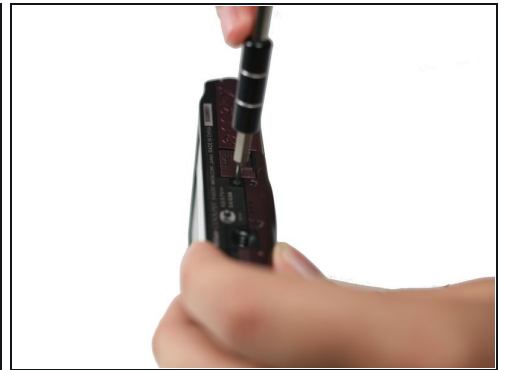
Precision tweezers (1)

Phillips #000 Screwdriver (1)

iFixit Opening Tool (1)

Spudger (1)

## Step 1 — External Casing



- Using a Phillips #000 head screwdriver, remove the 8 screws (3.30 mm) visible on the external part of the camera.
- There are 2 on each side, and 4 on the bottom.

## Step 2



- Remove the black casing on the back of the camera that runs around the LCD screen.

## Step 3



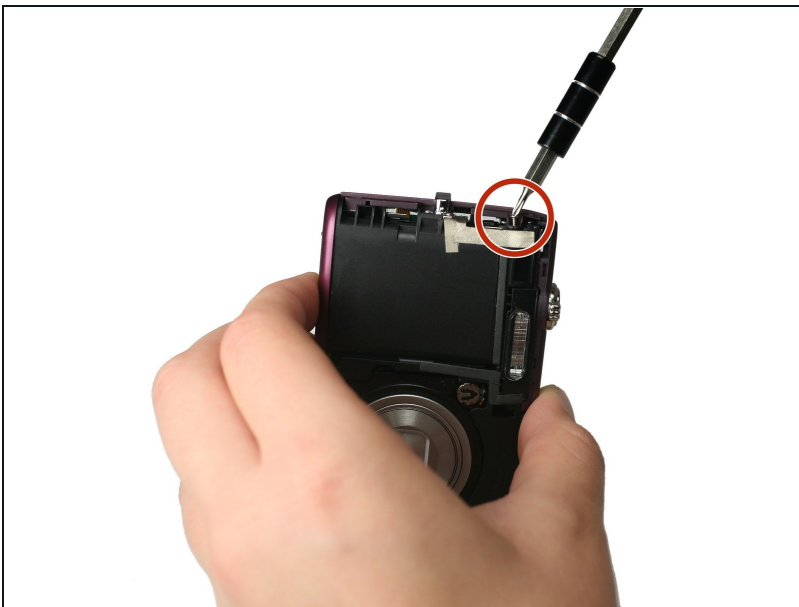
- Using the Philips #000 head screwdriver, remove the 1.90 mm internal screw located just above the lanyard mount.

## Step 4



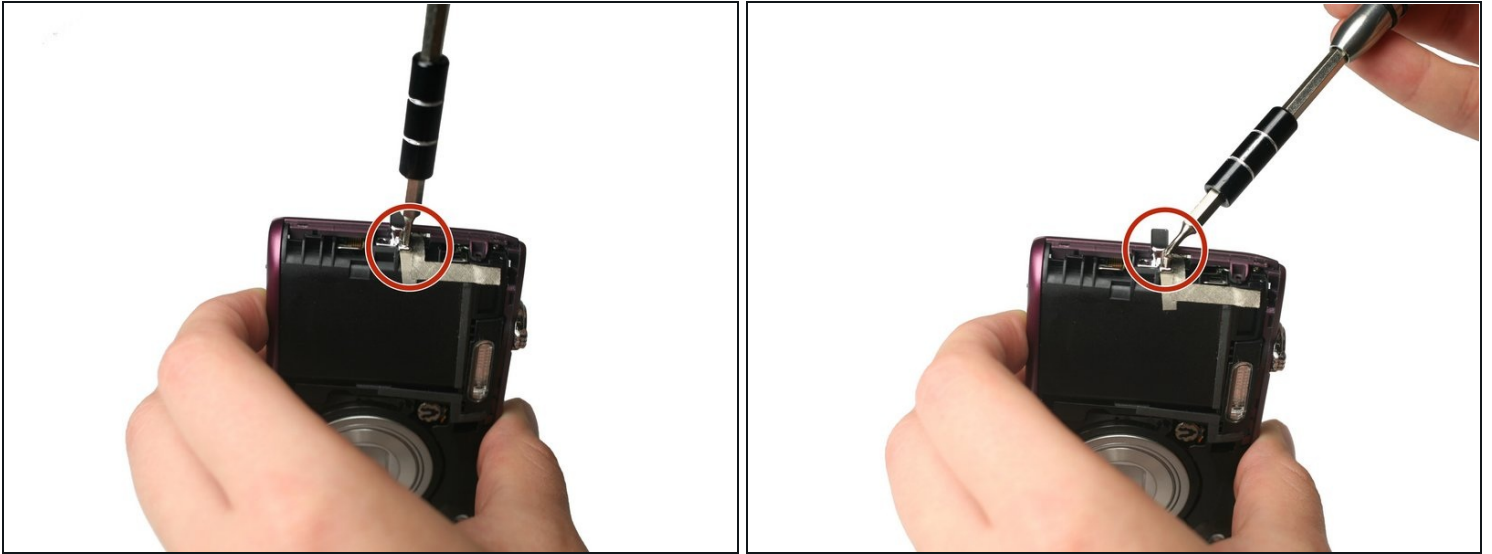
- Pry off the front shell casing.
- ① If you find this difficult, use a prying tool to help gently remove the casing.

## Step 5



- Using the Philips #000 head screwdriver, remove the 3.30 mm screw located on the side of the camera near the lanyard mount.

## Step 6



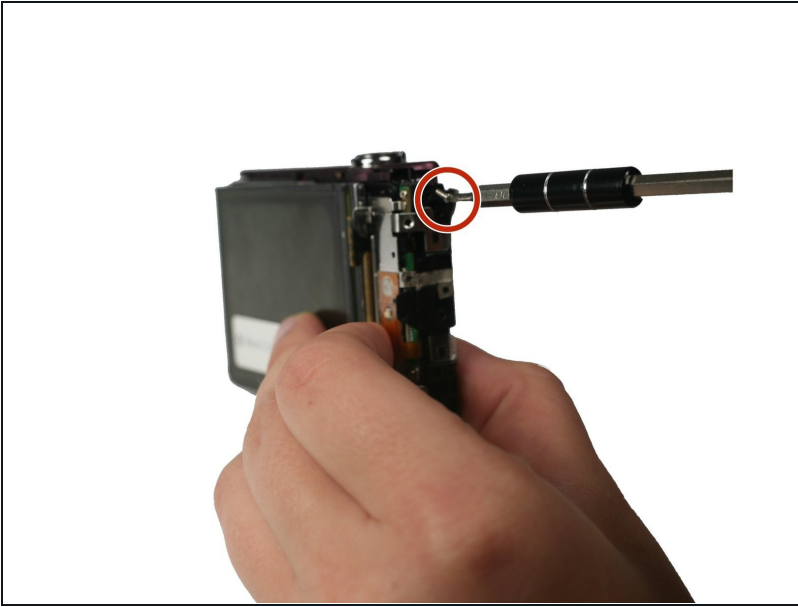
- Using the Philips #000 head screwdriver, remove 2 additional 3.30 mm screws holding the lanyard mount in place.

## Step 7



- Remove the lanyard mount and accompanying side shell casing off of the camera.

## Step 8



- Using the Philips #000 head screwdriver, remove the 3.30 mm screw securing the top shell casing.

## Step 9



- Using the Philips #000 head screwdriver, remove the 3.40 mm screw located on the front of the camera in the upper corner by the LED light.

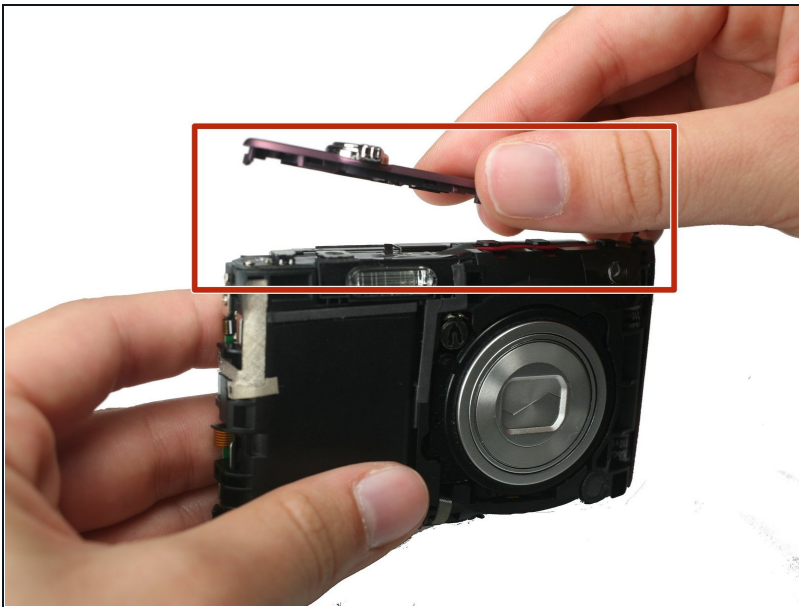


## Step 10



- Remove the remaining side shell casing.

## Step 11



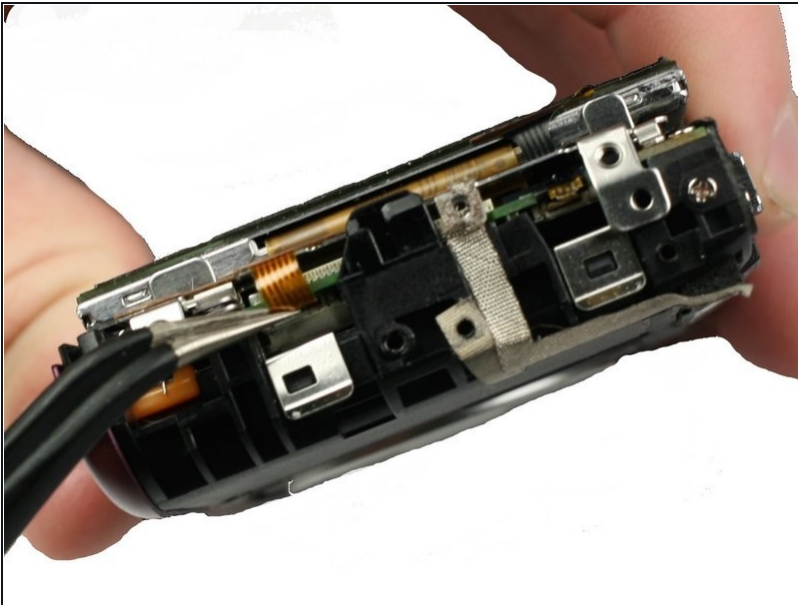
- Remove the top shell casing.

## Step 12 — Functional Button Plate



- Using the Philips #000 head screwdriver, remove the 3.40 mm screw located near the functional buttons.

## Step 13



- Using precision [tweezers](#), remove the ribbon cable that runs from the functional buttons plate to the under side of the motherboard.



## Step 14



- Using precision tweezers, lift up the bottom of the functional buttons plate and remove the metal plate.

---

To reassemble your device, follow these instructions in reverse order.