



HP ElitePad 900 LCD Replacement

Replace the LCD on your HP ElitePad 900.

Written By: Kyle Marques



INTRODUCTION

Use this guide to replace the LCD on your HP ElitePad 900.



TOOLS:

- [Phillips #000 Screwdriver](#) (1)
 - [iFixit Opening Tools](#) (1)
 - [Suction Handle](#) (1)
-

Step 1 — Front Panel Assembly



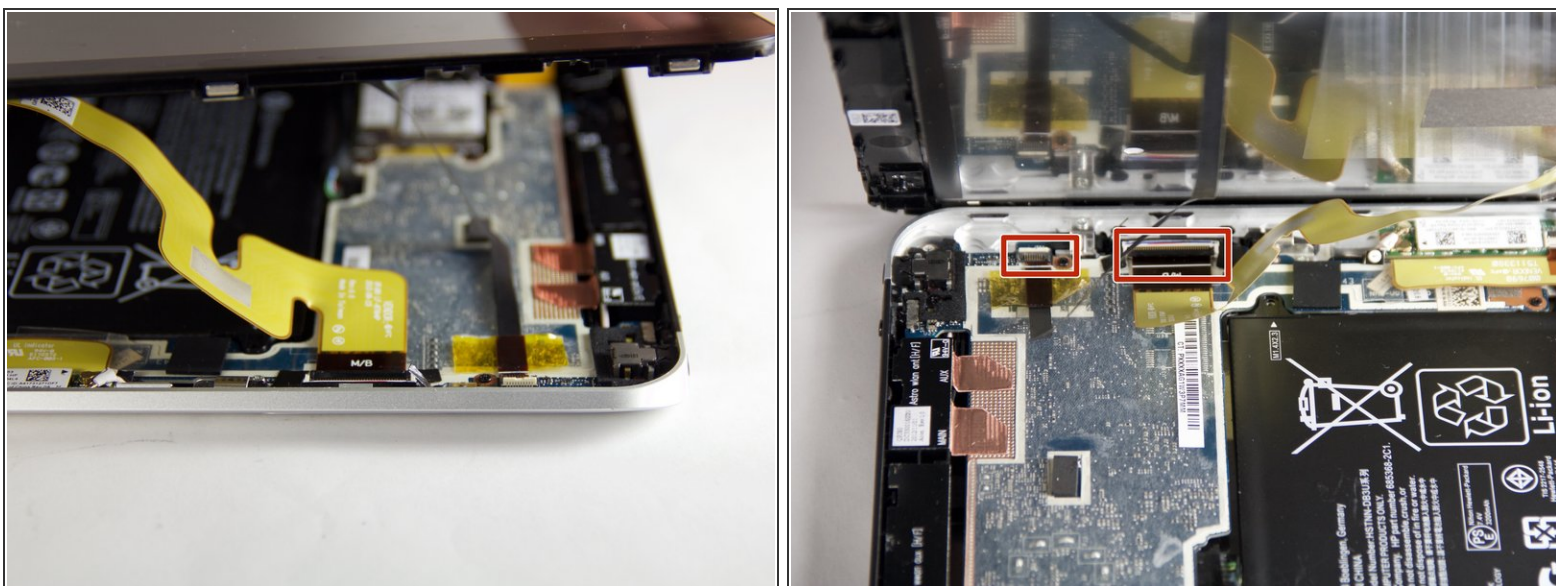
- Unscrew the two 2.8mm Phillips #000 screws near the power connector.

Step 2



- Use a suction cup to pull the display assembly up.

Step 3



- Use the tip of a spudger to disconnect the two display [ZIF connectors](#).

Step 4 — LCD



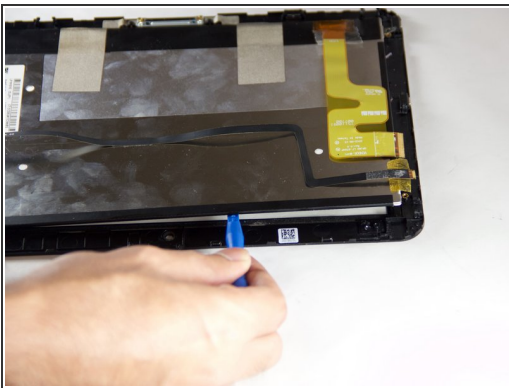
- Remove the four 1.6mm Phillips #000 screws securing the LCD to the digitizer.

Step 5



- Use the tip of a spudger to disconnect the ribbon cable ZIF connector.

Step 6



- Use a plastic opening tool to separate the LCD from the digitizer.

To reassemble your device, follow these instructions in reverse order.