



# HP Envy TouchSmart 15 Solid State Drive Replacement

How to remove and replace the solid state drive on this laptop.

Written By: Ramon Villadonga



---

## INTRODUCTION

You should replace your solid state drive if it has become damaged or corrupted. The OS will not boot properly is a major system of this.

---

### TOOLS:

- [Phillips #0 Screwdriver](#) (1)
-

## Step 1 — Battery



- Press the battery release tab and the battery will pop up.

## Step 2



- Remove the battery from the laptop, it will come out easily.

### Step 3 — Accessory Plate



- Remove the single screw holding the accessory plate. This is a PH0 2.0x2.5 screw.

### Step 4



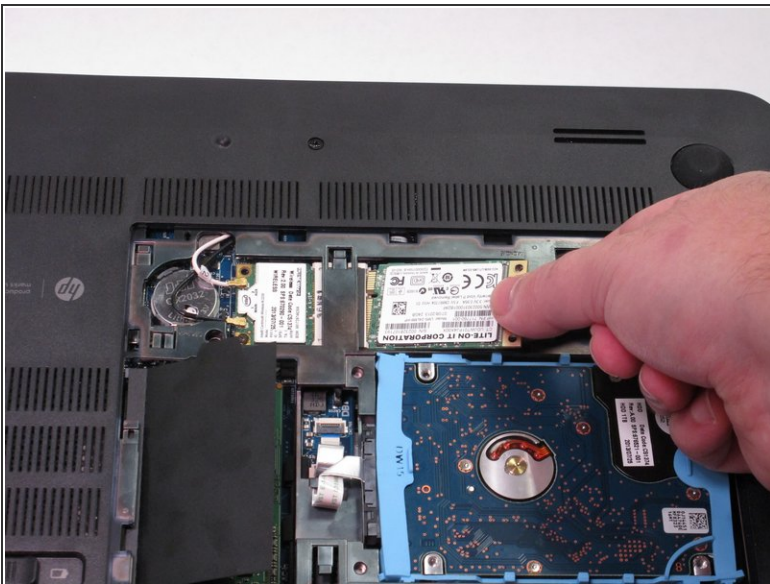
- Pry the accessory plate up from the back of the laptop by applying force upwards where the screw was removed.

## Step 5 — Solid State Drive



- Remove the PM 2.0x2.5 screw with the PH#0 Screwdriver attachment that is shown at the corner of the Solid State Drive.
- After you have removed the screw, the Solid State Drive should lift up.

## Step 6



- Very carefully, remove the SSD by gently pulling away from the SSD socket.

To reassemble your device, follow these instructions in reverse order.