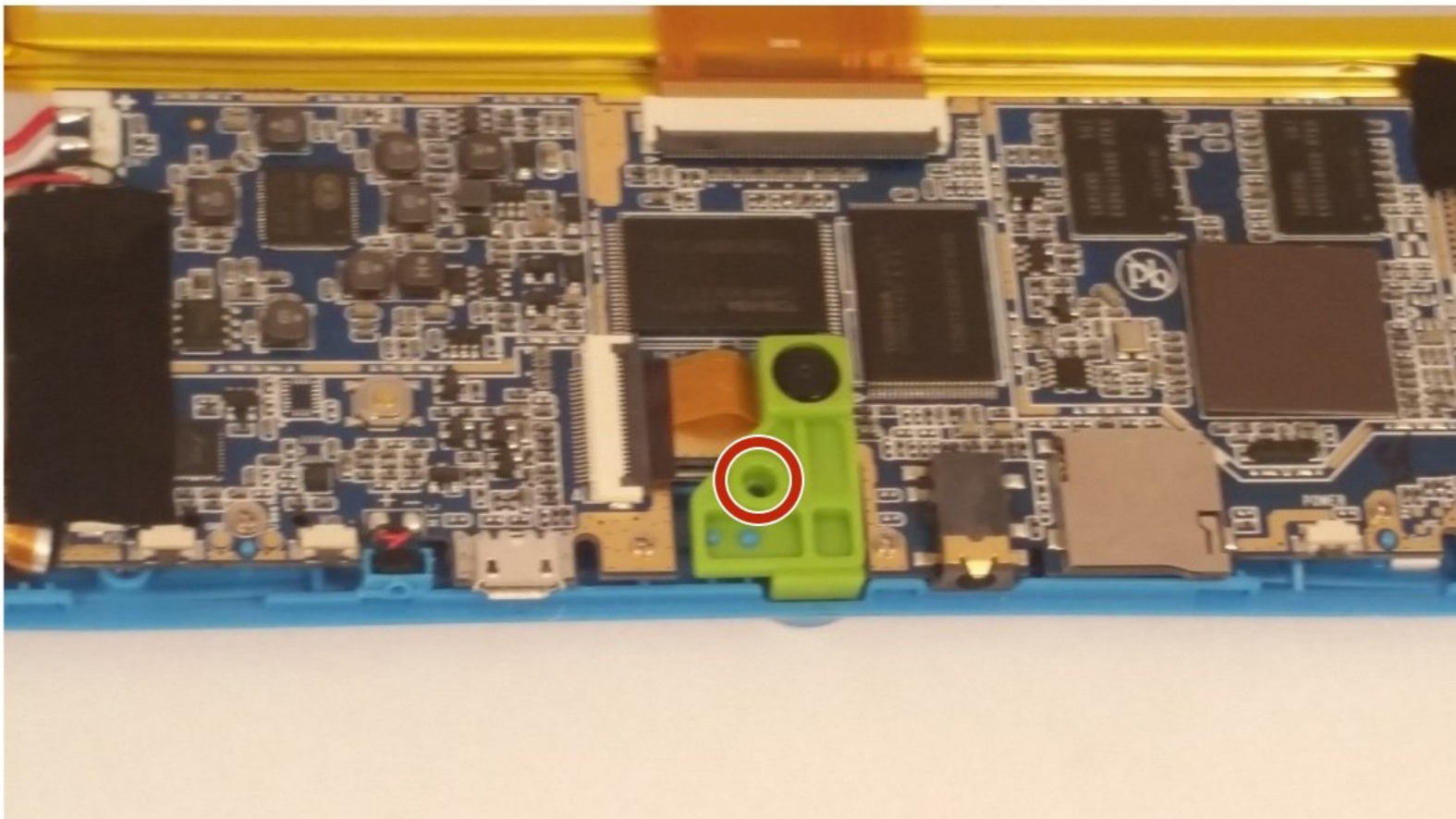




# Sprout Channel Cubby Camera Replacement

Removal and replacement of the device's camera.

Written By: jasen biggins



---

## INTRODUCTION

This guide will require the use of a Phillips head screwdriver. The ribbon connector is usually the reason the device will need this replacement.

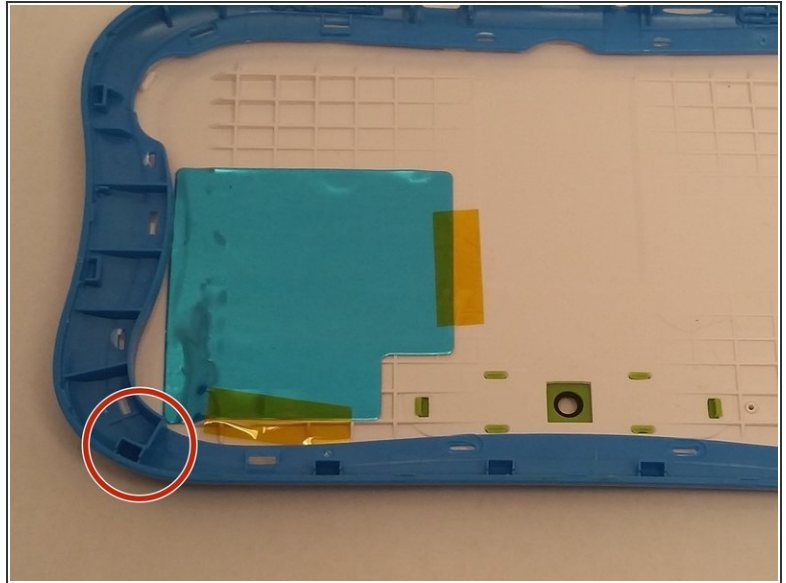
---



### TOOLS:

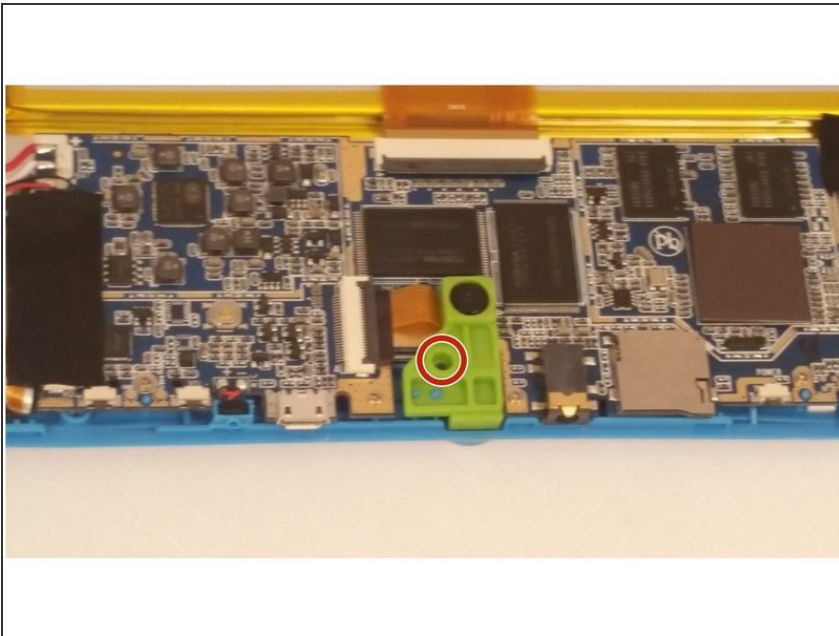
- [iFixit Opening Tools](#) (1)
  - [64 Bit Driver Kit](#) (1)
-

## Step 1 — Dissassemble the device



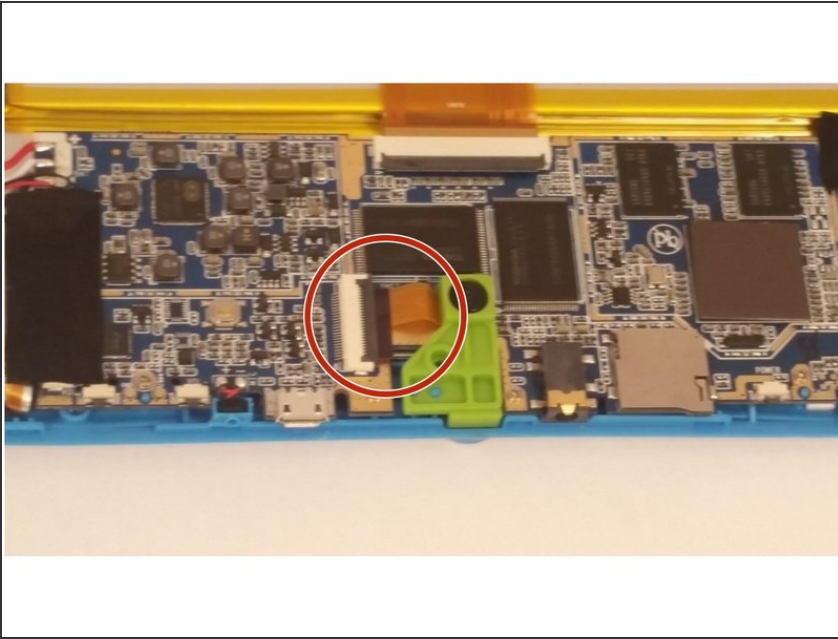
- Use an opening tool to push in and release sixteen small plastic clips around the edge of the case. As the clips are released, gradually pry the case apart.
- ⓘ It is easiest to start on the corners.

## Step 2 — Remove the screw



- Remove the single screw attaching the camera to the device.

### Step 3 — Remove the camera



- Use the opening tool or a fingernail to [release the ZIF connector](#).
- Disconnect the camera ribbon cable.
- Remove the camera.

To reassemble your device, follow these instructions in reverse order.