



Revlon RVIR1008 Disassembly

This guide will show the step by step disassembly of a Revlon curling iron with a 1.5 inch diameter barrel.

Written By: Kelsea



INTRODUCTION

Have you ever wondered what the inside of your curling iron looks like? Is your temperature wheel, swivel cord, or barrel clip broken? With this disassembly guide, you will be able to see the inner workings of a basic curling iron. This guide can also help you replace or fix parts of the curling iron that often wear out with daily use.

TOOLS:

- [Flathead Screwdriver](#) (1)
-

Step 1 — Revlon RVIR1008 Disassembly



- ⚠ Be sure your curling iron is removed from the electrical outlet. Failure to unplug may result in electric shock and/or damage to the curling iron.
- Place the curling iron on a clean, flat surface.

Step 2 — Remove the metal stand.



- Use your fingers to pull the ends of the stand away from the barrel. The metal stand should be easy to pry from the sides of the barrel.

Step 3 — Remove the barrel clip.



- Using a 3mm Flathead screwdriver, slowly remove both screws from the sides of the barrel clip.
- ⓘ Take turns unscrewing each screw . The clip is operated by a tight metal spring. Completely removing one screw first makes it difficult to unscrew the second screw.

Step 4 — Remove the clip spring.



- Using two fingers, squeeze either side of the spring and slide the ends away from the barrel.

Step 5 — Remove the spring plate



- Using a 3mm Flathead Screwdriver, remove the screw holding the spring plate in place.

Step 6 — Remove the bottom of the handle.



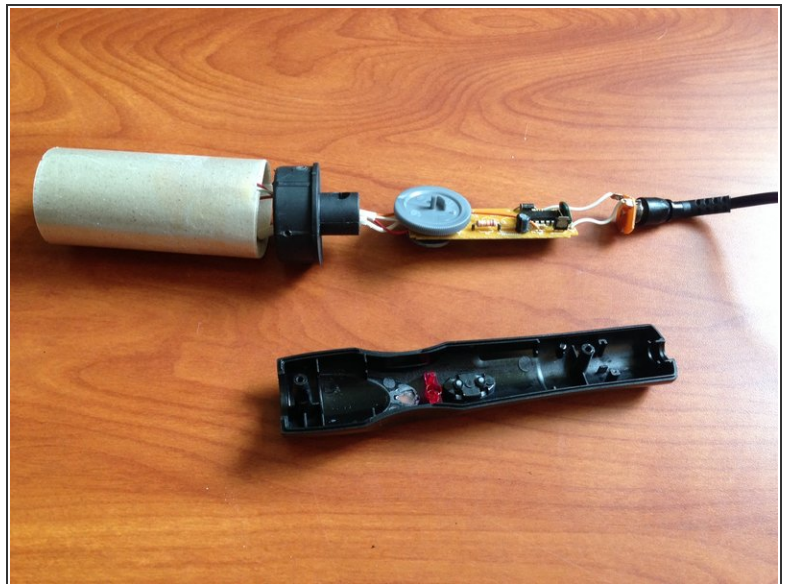
- Using a 3mm Flathead Screwdriver, remove the 27mm screw on the left and the 15mm screw on the right.
- ⓘ When reassembling the curling iron, make sure to put the screws in their respective holes.
- Once the screws are removed, the bottom plate easily comes off, exposing the inner components of the iron.

Step 7 — Remove the barrel shell.



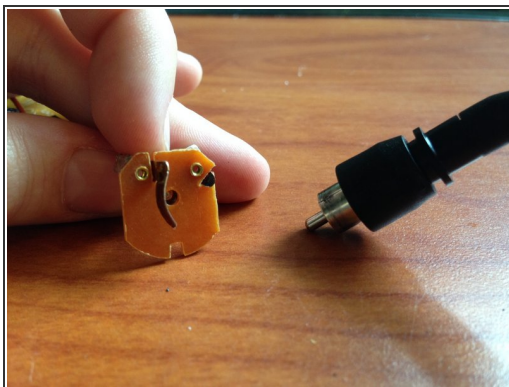
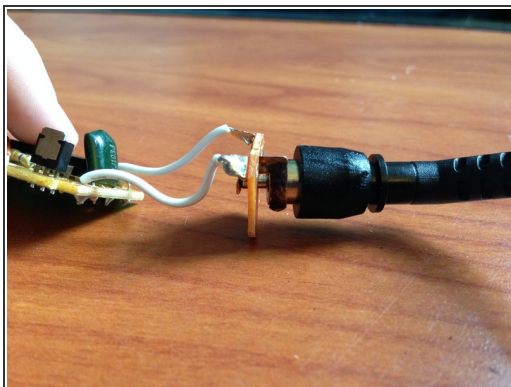
- To remove the barrel, simply slide the silver outer shell away from the inner heat transfer element.
- ⚠ The inner heat transfer element is attached to multiple AC power wires. When removing the barrel shell, make sure the inner heating element is not pulled away from the rest of the iron or the wires may tear off.

Step 8 — Remove the top of the handle.



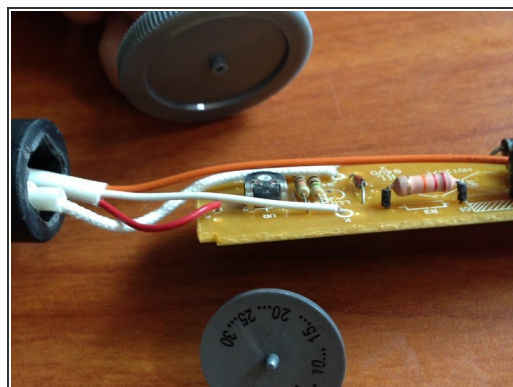
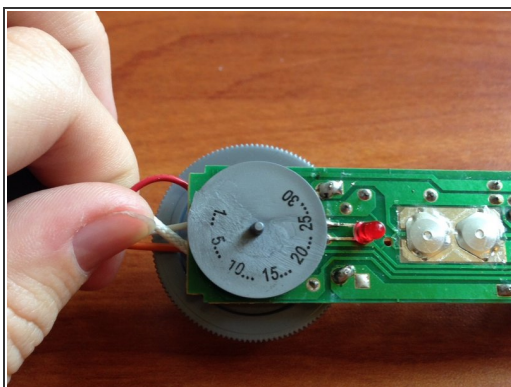
- Using your hands, slowly pull the inner components away from the top of the handle.

Step 9 — Remove the swivel cord.



- Using your hands, slowly pull the cord away from the socket. The cord should easily slide out of the socket.

Step 10 — Remove the temperature dials.



- Using two hands, grab each wheel and pull the temperature dials away from the circuit board.

Step 11 — You did it!



- You have successfully completed the disassembly! Follow these steps in reverse to reassemble your curling iron.