



Canon EOS Rebel T5 SD Card Replacement

This guide will show the reader how to remove and replace the SD card for their Canon EOS Rebel T5 camera.

Written By: Austin Tucker



INTRODUCTION

Going on a long trip, and need to take extra memory? This guide will show you how to remove and switch out your SD card.



TOOLS:

- [Fingers](#) (1)
-

Step 1 — Battery



- Lay the camera on its back so that the card/battery door is facing you.
- Using your fingernail, slide the tab on the battery door up to release the battery door latch.

Step 2



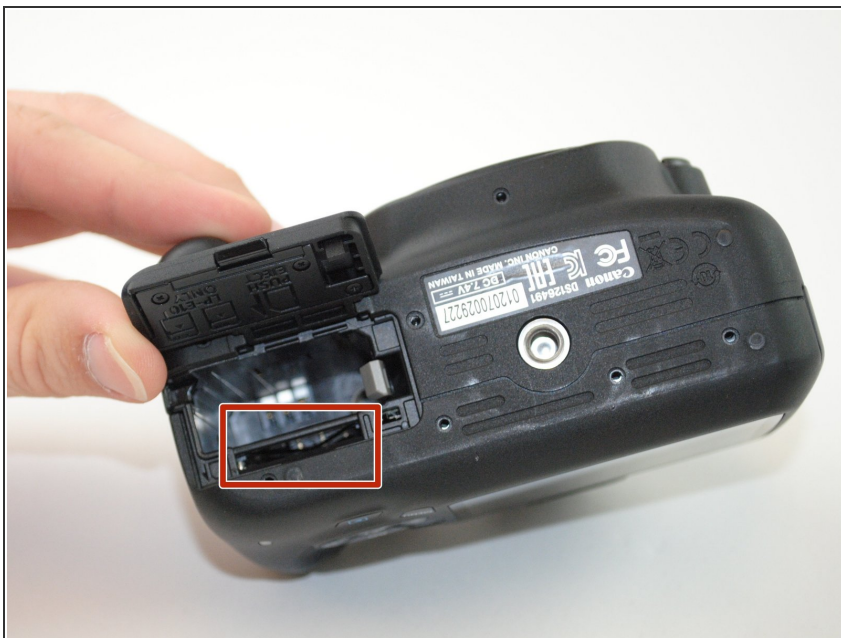
- Lift the now free card/battery door to reveal the battery compartment.
- Push the gray lever to the right side so that the battery can be removed and replaced with a new one.

Step 3 — SD Card



- Lay the camera on its back so that the card/battery door is facing you.
- Using your fingernail, slide the tab on the battery door up to release the battery door latch.

Step 4



- Open the battery compartment by lifting the card/battery door. You will see a thin SD Card slot below the battery.
- Push in the old SD card until it clicks to remove it and then push in the new card until it clicks into place.

To reassemble your device, follow these instructions in reverse order.