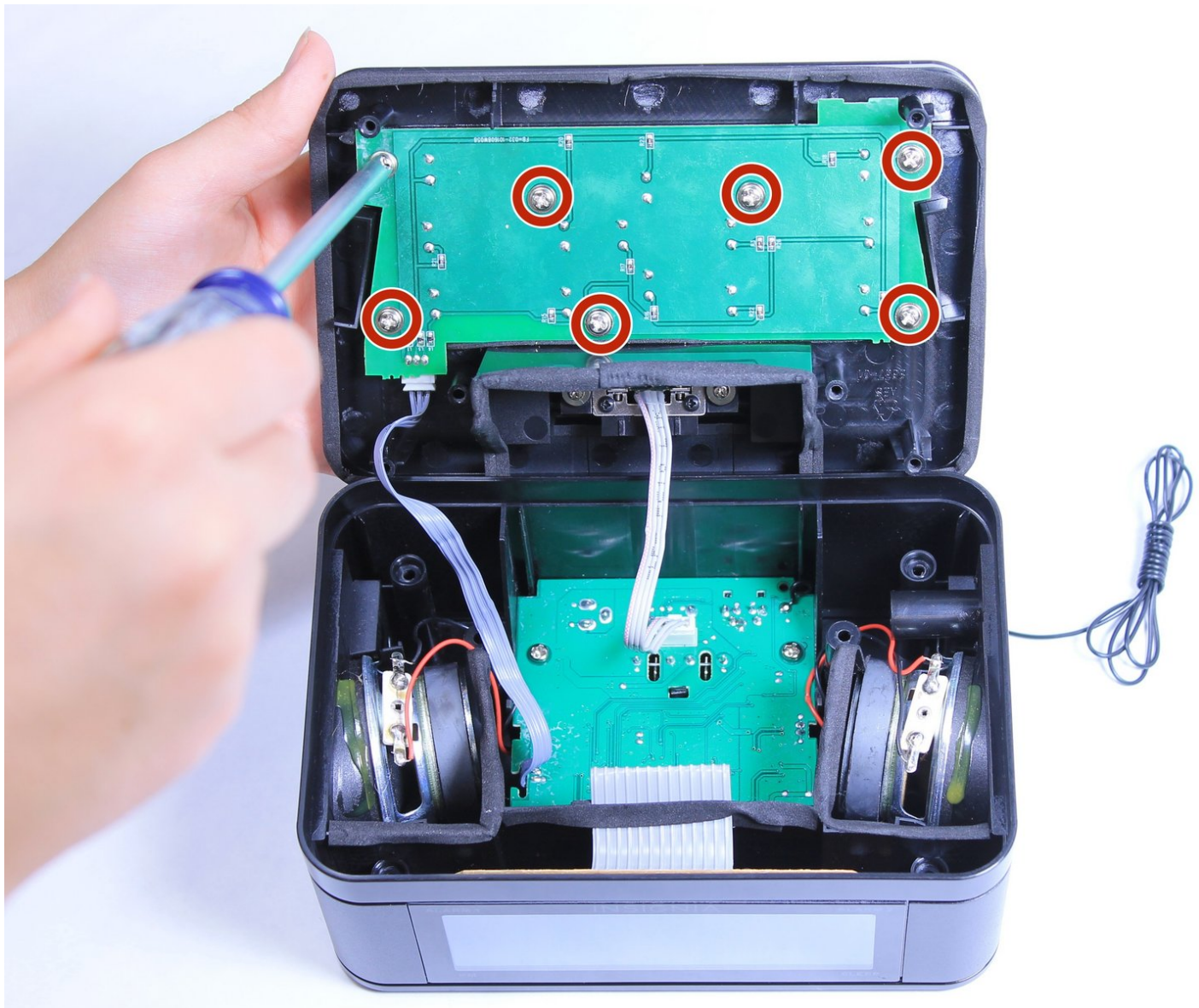




Insignia NS-CLLT01 Button Replacement

This guide will explain how to replace individual internal pushbuttons on the button circuit board.

Written By: Preston Jackson



INTRODUCTION

If the buttons on the device are not responsive, you may need to replace them, and this guide will show you how to do that, but does involve some soldering.

TOOLS:

- [Phillips #2 Screwdriver](#) (1)
 - [iFixit Opening Tools](#) (1)
 - [Soldering Iron](#) (1)
 - [Tweezers](#) (1)
-

Step 1 — Insignia NS-CLLT01 Top Casing Removal



- Lift the four adhesive covers on each of the corners on the bottom of the clock using a plastic opening tool or your fingernail.

Step 2



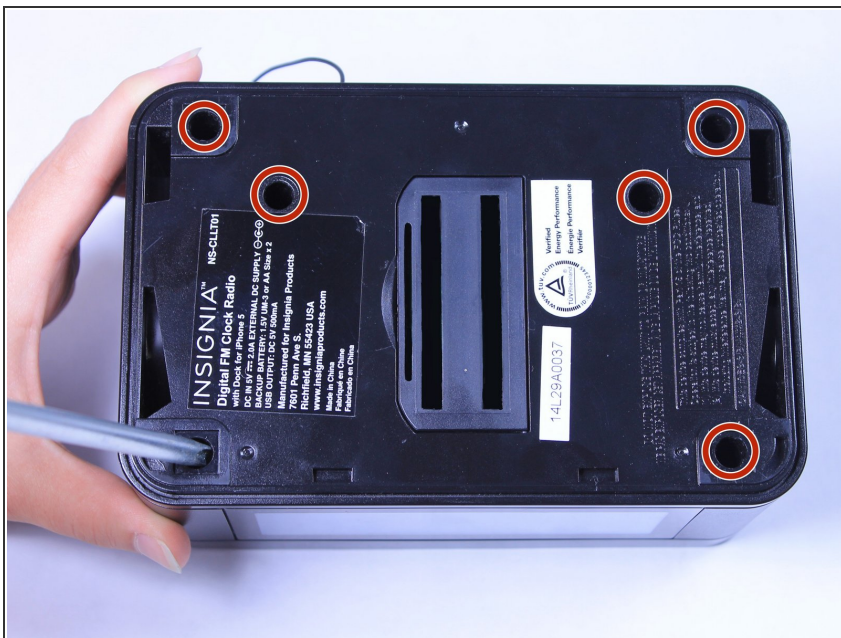
- On the bottom of the clock, use your fingernail to push the battery cover to the right.
- Lift the battery cover up and to the right to reveal the batteries.

Step 3



- Remove the two AA batteries by pressing the end opposite of the spring towards that spring and lifting up.
- Once the batteries are removed, close the cover.

Step 4



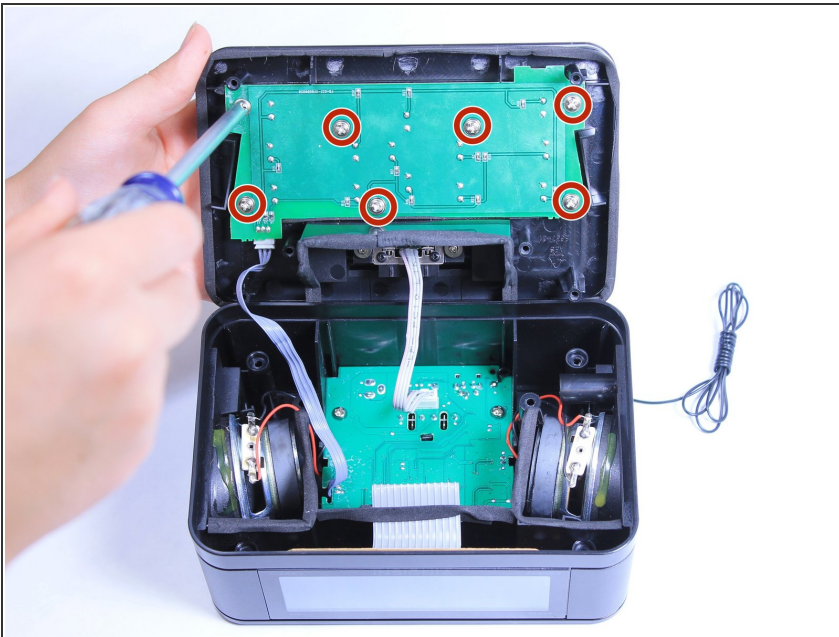
- Use a long Phillips #2 screwdriver to unscrew all six 10mm Phillips screws inside the bottom of the clock.
- Turn over the device to allow the screws to fall out, being careful to catch them so that you do not lose any.
- ⓘ The screws may not come out of the bottom of the clock. As long as you have unscrewed them, the clock can still be opened.

Step 5



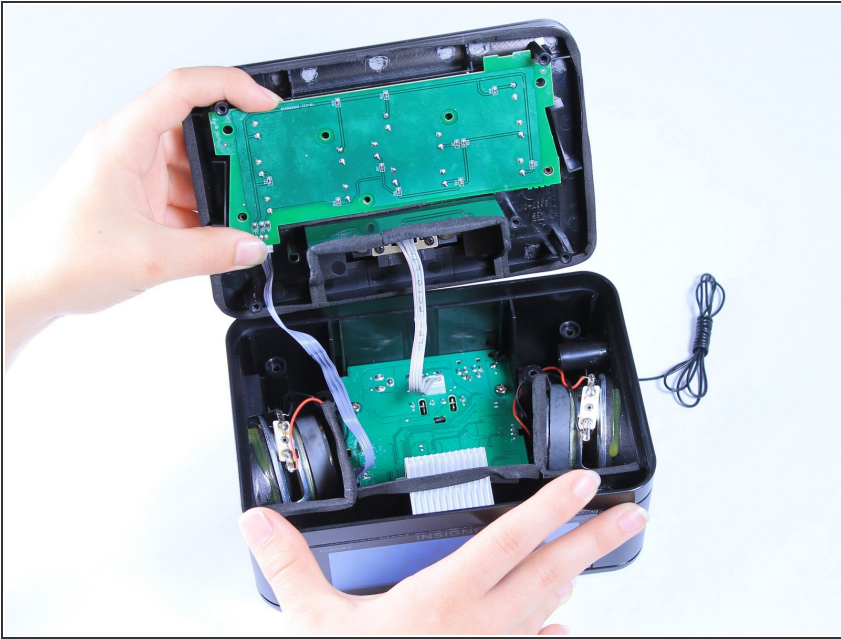
- Turn the clock back over.
- Lift the top off of the clock by gripping the back of the iPhone dock and pulling straight up.

Step 6 — Button



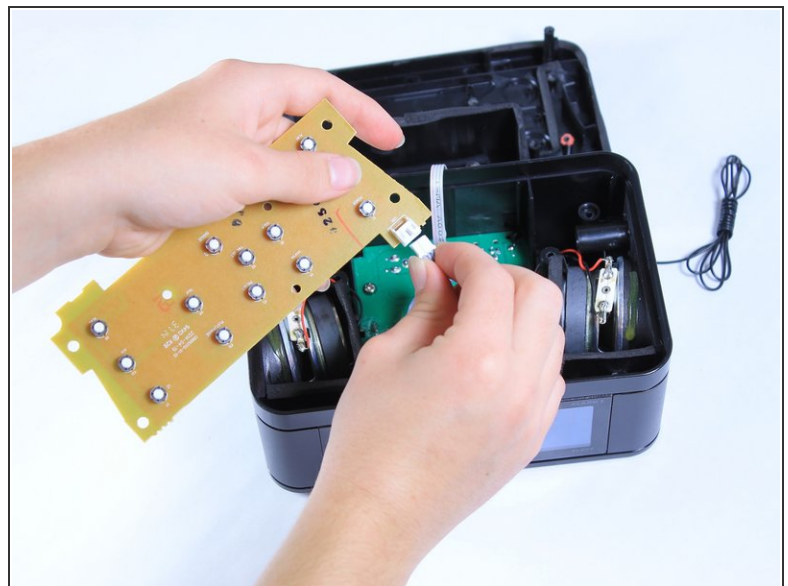
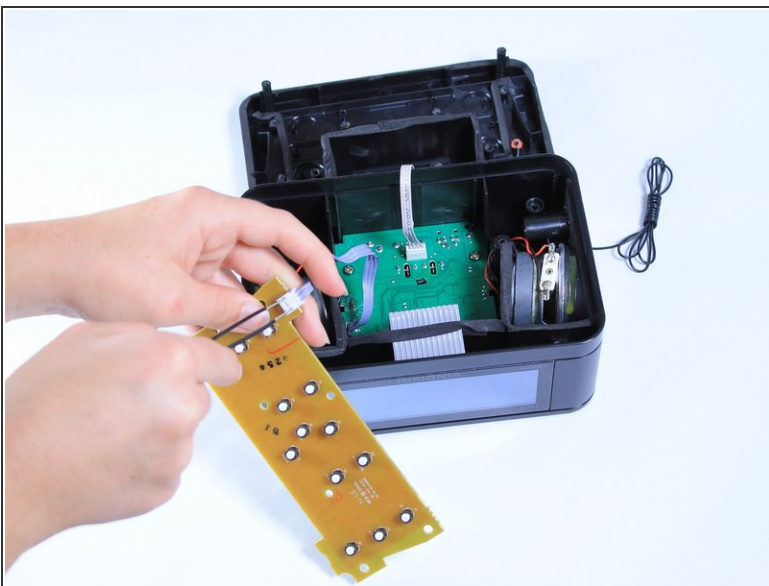
- Using the Phillips #2 screwdriver, unscrew the seven 6mm Phillips screws on the circuit board that is attached to the top of the case.

Step 7



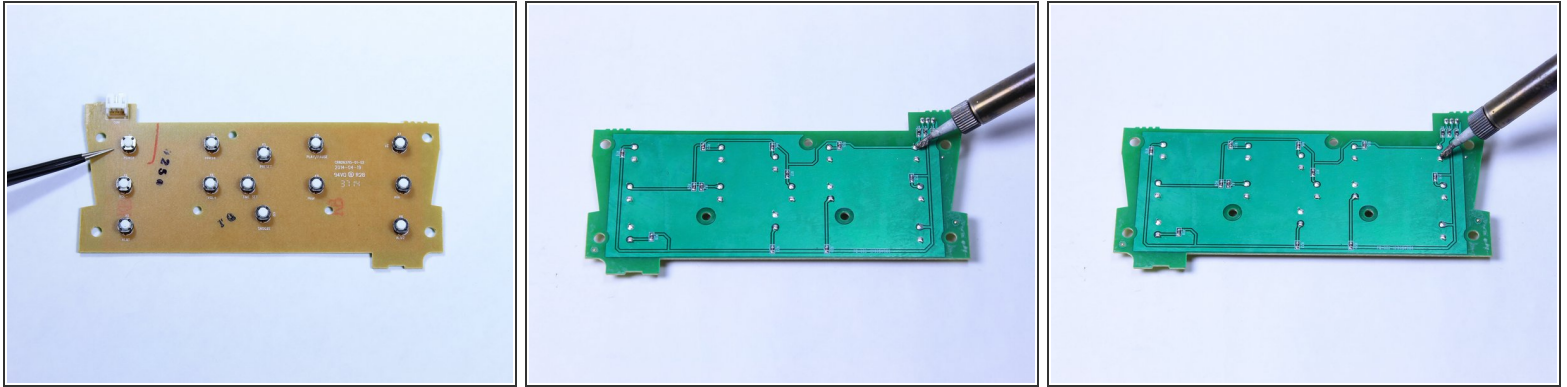
- Lift the circuit board from the device.

Step 8



- Detach the circuit board from the rest of the clock by gripping the sides of the white ribbon cable connector on the left-hand side of the board and pulling it straight off. You may need to use tweezers to grip the connector.

Step 9



- Use this [soldering guide](#) to remove and replace any buttons that were not working.
- ⓘ The buttons will be labeled on the top of the circuit board, and you will be working with the corresponding connections on the back.

To reassemble your device, follow these instructions in reverse order.