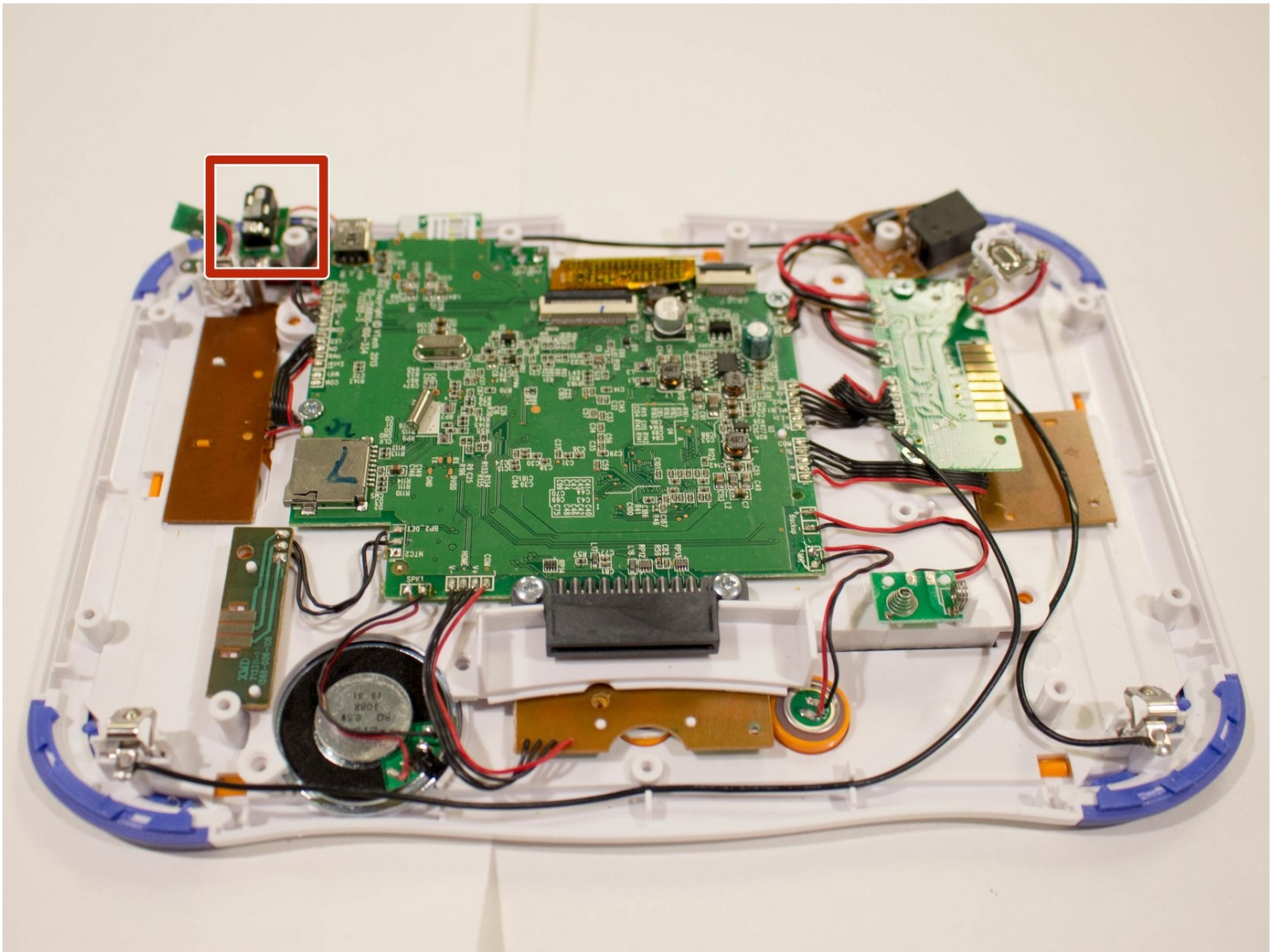




# Vtech InnoTab 3S Headphone Port Replacement

Headphones do not work when you plug them into...

Written By: Karina Garcia



# INTRODUCTION

Headphones do not work when you plug them into the InnoTab? This guide will walk you through replacing the headphone port on your child's Vtech InnoTab 3S.

---

## TOOLS:

Metal Spudger (1)

Phillips #1 Screwdriver (1)

Tweezers (1)

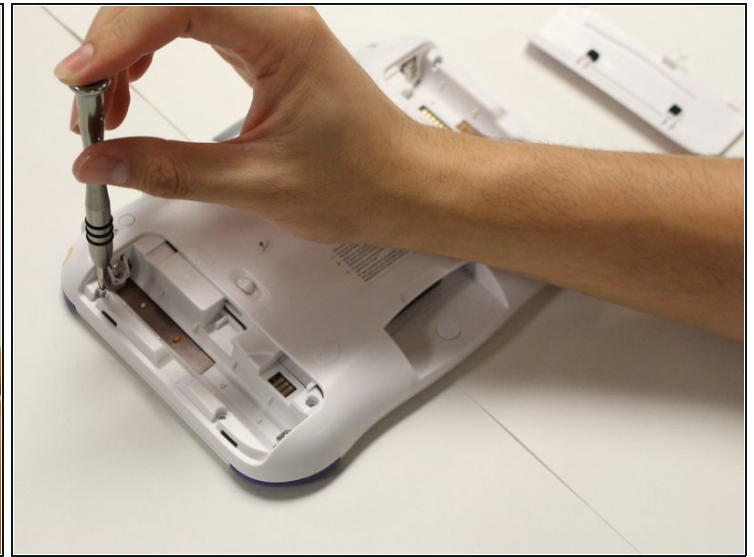
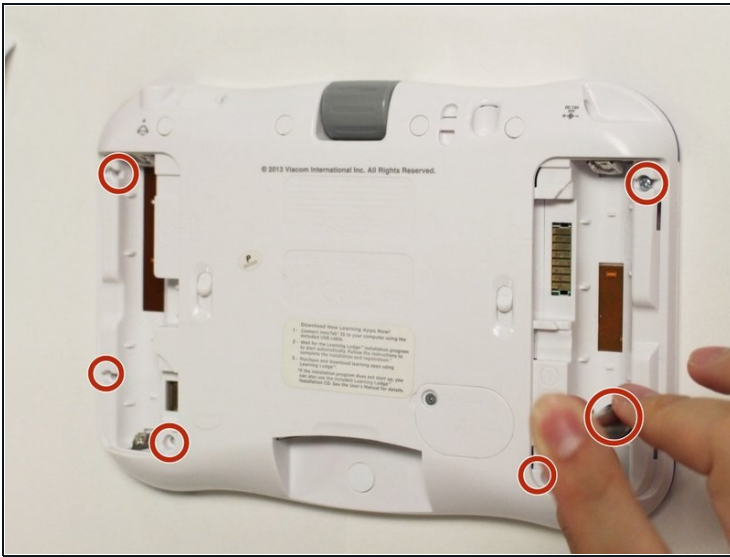
---

## Step 1 — Rear Panel



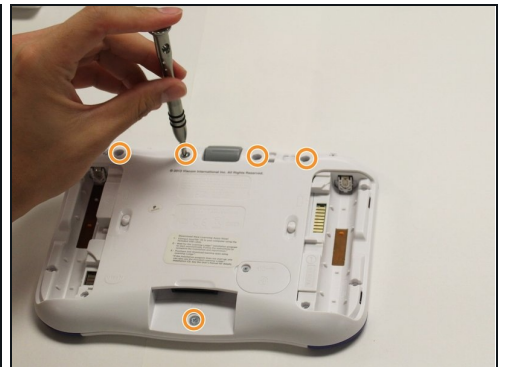
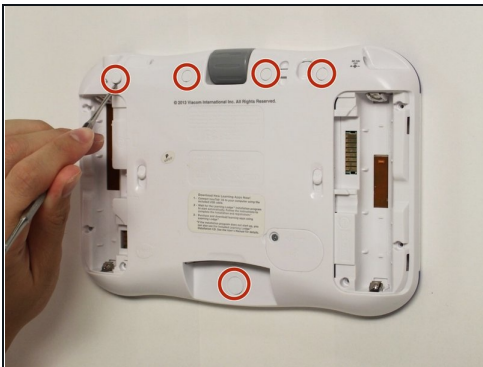
- While holding the battery compartment locks down, slide the two battery doors outwards from the sides of the device.
- Remove the batteries from the device.

## Step 2



- Remove six 7 mm screws from the interior of the battery compartment using a Phillips #1 screwdriver.

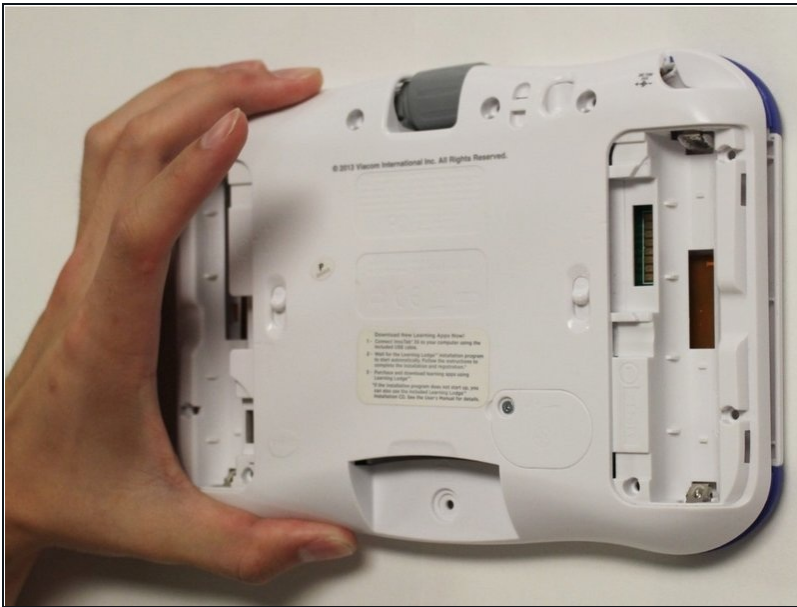
## Step 3



- Using a nylon spudger, remove the five caps that hide the screws.
  - ⚠ Potential for device damage: Be careful not to scrape the plastic from the device using the spudger.
  - ⓘ When removing the caps, hold the spudger vertical to the board to make removal easier. Also try to push in with your spudger pointing towards the bottom of the device.
- Remove the five 5 mm Phillips #1 screws from the rear panel of the device.

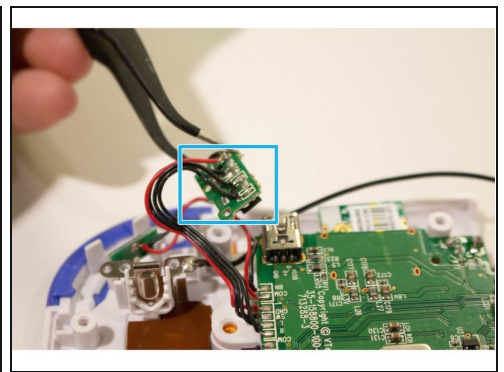
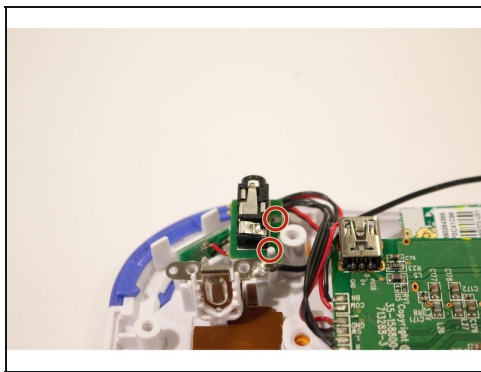
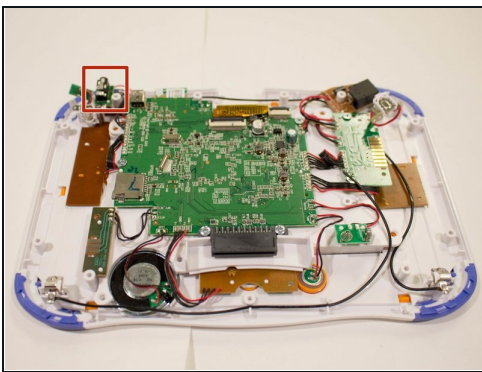


## Step 4



- Carefully remove the rear panel from the front panel of the device.
- ① Once the rear panel is removed, you'll be able to see the motherboard and other components within the Vtech InnoTab 3s.

## Step 5 — Headphone Port



- ① The headphone port is located towards the top left side of the device.
- With tweezers remove the headphone port from its slot on the device.
- ① The headphone port is fastened by two plastic poles. For easier removal lift the headphone port perpendicular to the device upwards.
- ⚠ Avoid damaging the plastic poles fastening the headphone port to the device. They are extremely fragile.
- Solder the wires securing the headphone port to the device.
- ⚠ Avoid forceful movements when soldering to prevent damage to device components and personal injury.

---

To reassemble your device, follow these instructions in reverse order.