



# Logitech Harmony Ultimate Charging Station Motherboard Replacement

This guide will describe how to disassemble the charging station and access the motherboard.

Written By: Lucas Reynolds



---

## INTRODUCTION

Replacing the motherboard in the charging dock requires a Phillips screwdriver and plastic opening tools. The most difficult part of this guide is revealing the charging dock after removing the screws from the device. Once the device is open, removing the motherboard requires a few more screws to be removed from within the charging dock.




### TOOLS:

- [Phillips #1 Screwdriver](#) (1)
  - [Phillips #0 Screwdriver](#) (1)
  - [iFixit Opening Tools](#) (1)
-

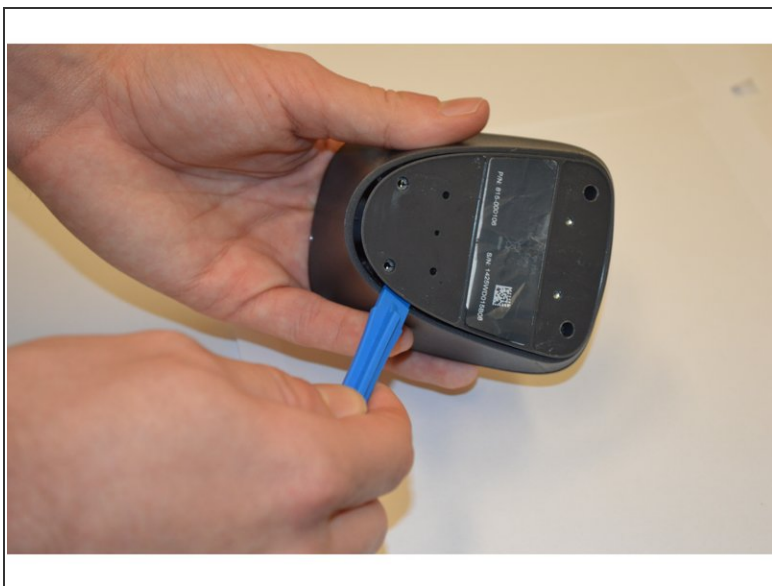
## Step 1 — Charging Station Motherboard



 Screws are hidden beneath rubber pads.

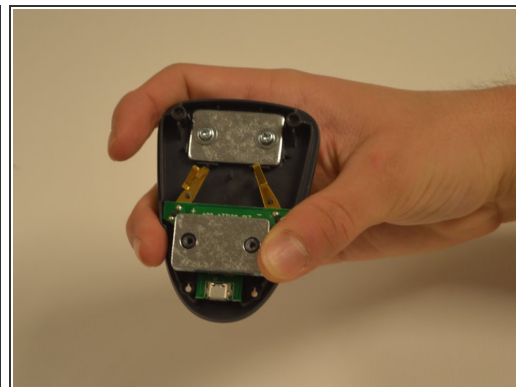
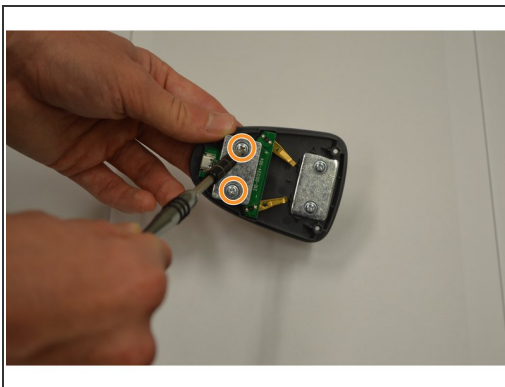
- Peel off the rubber pads.
- Remove four 6mm screws Phillips #0 screws from the bottom of the device.

## Step 2



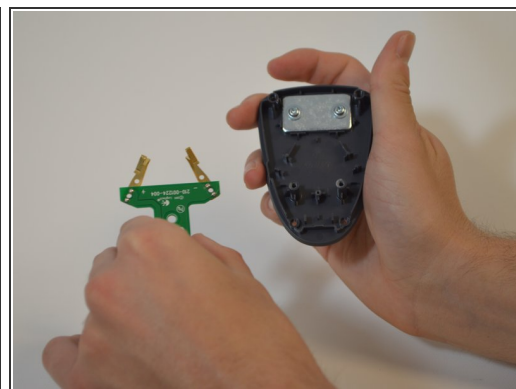
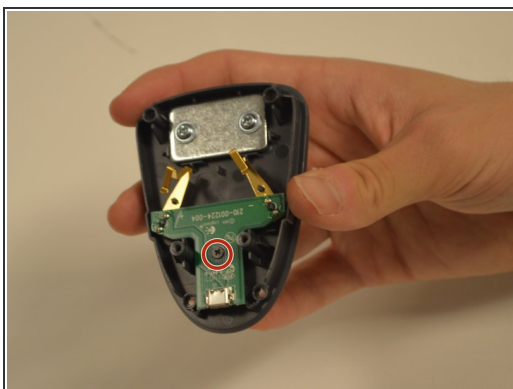
- Use the plastic opening tool to remove top shell from device.

### Step 3



- Remove the two (4mm) screws using Phillips 1 screwdriver.

### Step 4



- Use the Phillips #0 screwdriver to remove the last (4mm) screw. The motherboard can now be removed.

To reassemble your device, follow these instructions in reverse order.