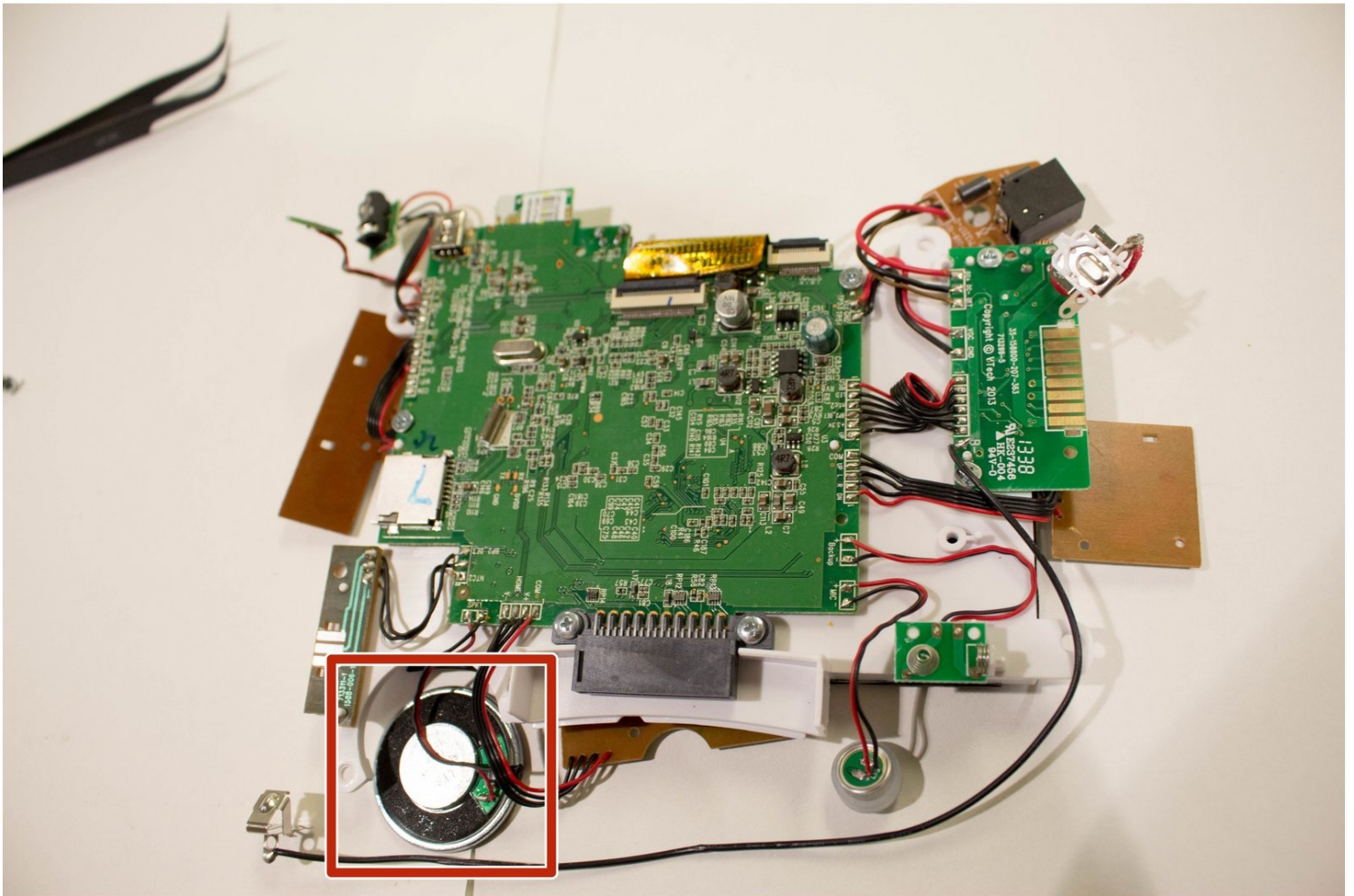




# Vtech InnoTab 3S Speaker Replacement

Is the speaker malfunctioning on your child's...

Written By: taweewatchulikavit



# INTRODUCTION

Is the speaker malfunctioning on your child's tablet? Does it need to be replaced? This guide will walk you through replacing the speaker on the Vtech InnoTab 3S.

## TOOLS:

Metal Spudger (1)

Phillips #1 Screwdriver (1)

Phillips #000 Screwdriver (1)

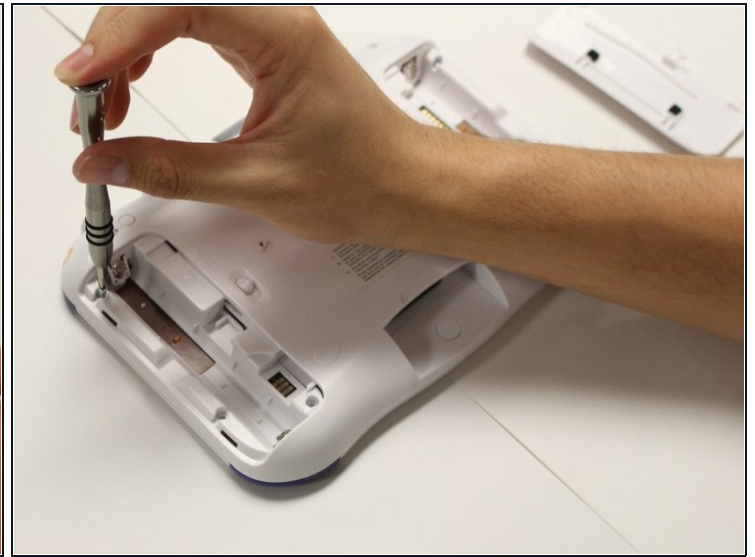
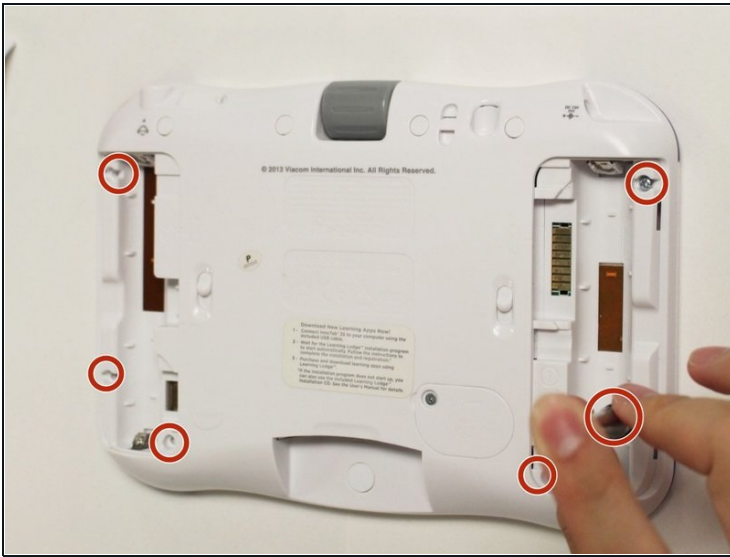
Lead-Free Solder (1)

## Step 1 — Rear Panel



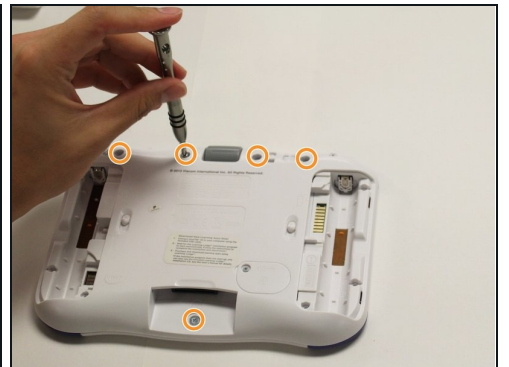
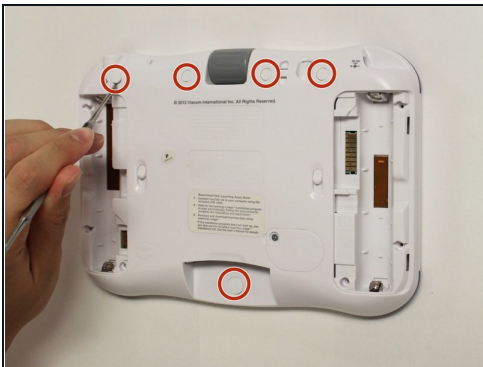
- While holding the battery compartment locks down, slide the two battery doors outwards from the sides of the device.
- Remove the batteries from the device.

## Step 2



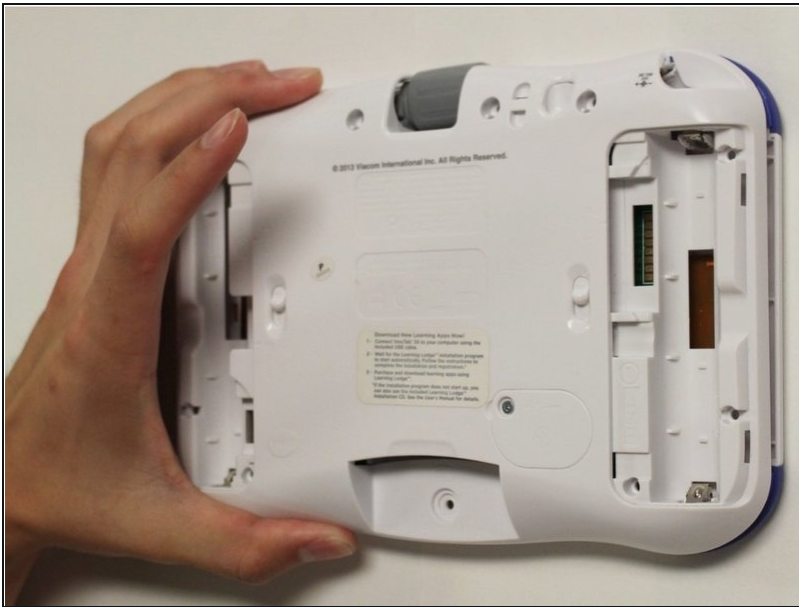
- Remove six 7 mm screws from the interior of the battery compartment using a Phillips #1 screwdriver.

## Step 3



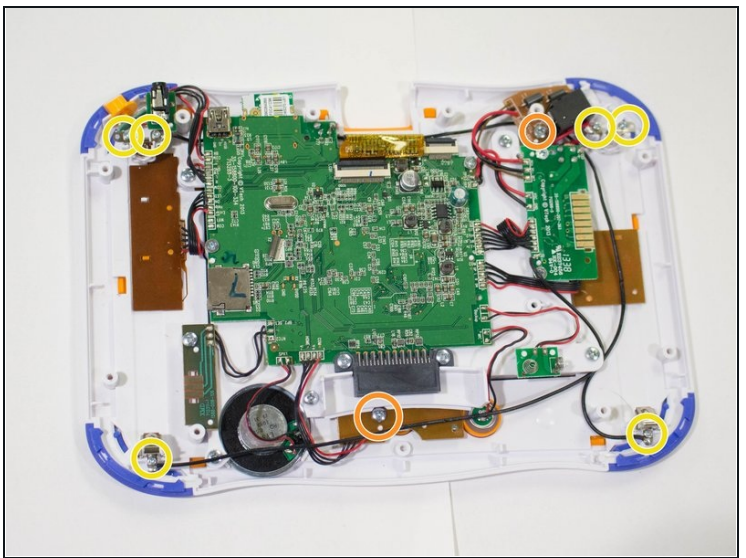
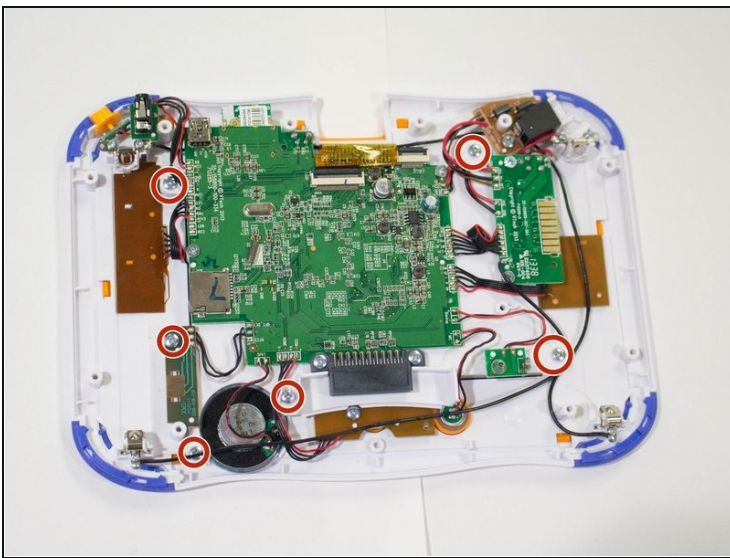
- Using a nylon spudger, remove the five caps that hide the screws.
  - ⚠ Potential for device damage: Be careful not to scrape the plastic from the device using the spudger.
  - ⓘ When removing the caps, hold the spudger vertical to the board to make removal easier. Also try to push in with your spudger pointing towards the bottom of the device.
- Remove the five 5 mm Phillips #1 screws from the rear panel of the device.

## Step 4



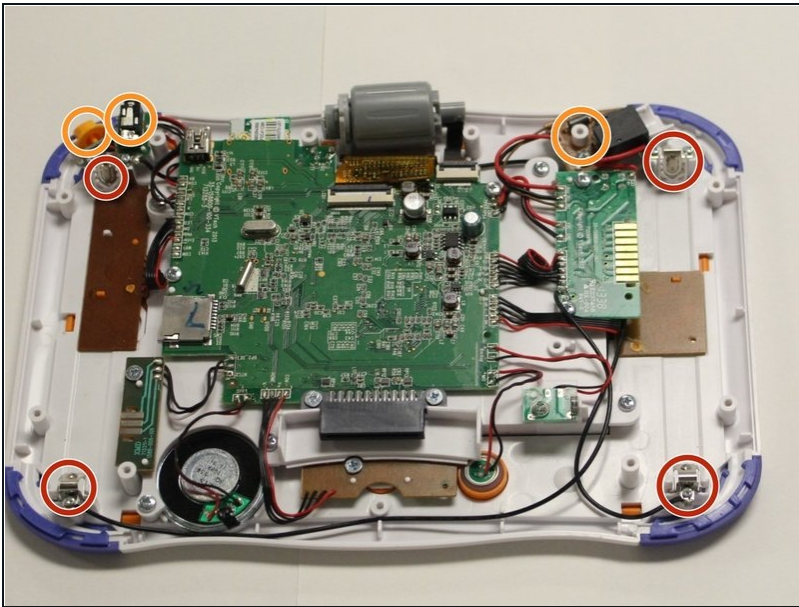
- Carefully remove the rear panel from the front panel of the device.
- ① Once the rear panel is removed, you'll be able to see the motherboard and other components within the Vtech InnoTab 3s.

## Step 5 — Motherboard



- Remove the six screws that secure the motherboard to the front panel of the device using a Phillips #1 screwdriver.
- Remove the other 5mm screws that secure the charger port and the buttons to the inside of the front panel.
- Remove the six 3 mm screws securing the battery clip.

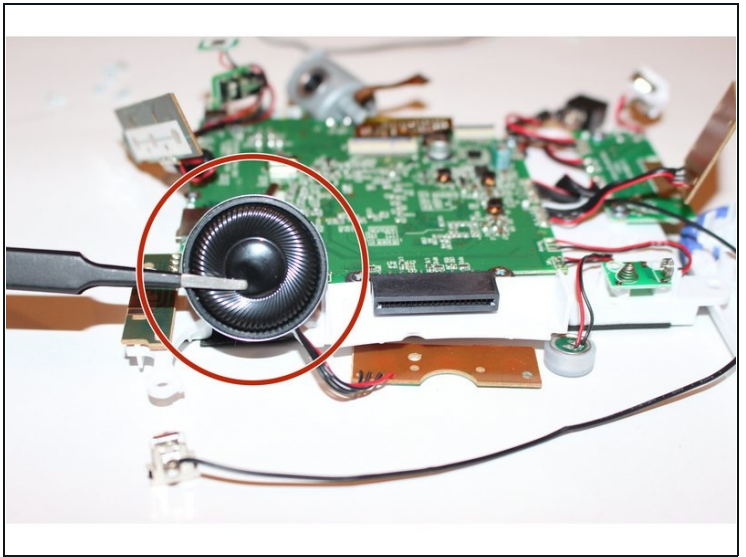
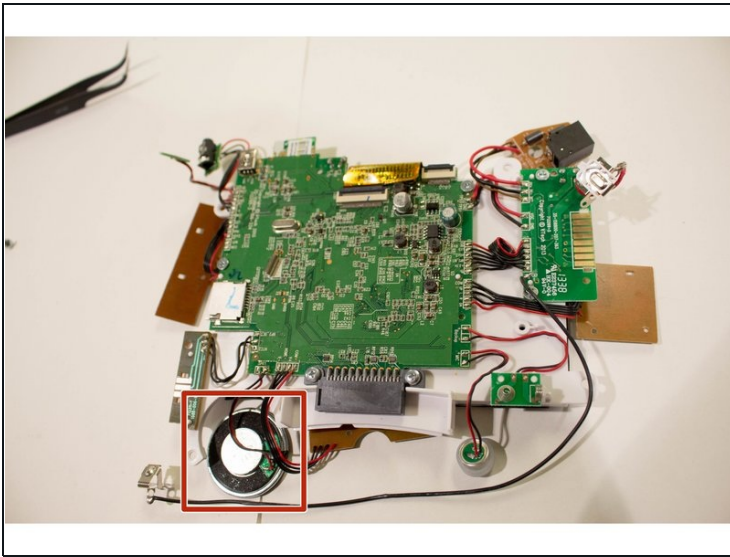
## Step 6



- Using the tweezers, remove one battery clip from each corner (four total) of the Vtech InnoTab 3s.
- With the tweezers, unsecure the charging port, headphone port, and the light switch button from the front panel of the device.

⚠ Potential for device damage:  
Avoid forceful movements when  
removing the motherboard to  
prevent damage of device  
components.

## Step 7 — Speaker



- ① Looking at the front of the motherboard, the speakers are located in the bottom left of the device. They are shaped like a large black circle.
  - Using a soldering iron, heat the connections securing the speakers to the motherboard of the device.
  - Remove the connections on the motherboard to detach the speaker.
- ⚠ Avoid forceful movements when soldering to prevent damage of device components and avoid personal injury.

---

To reassemble your device, follow these instructions in reverse order.