



# Logitech Harmony Ultimate Harmony Hub

## Motherboard Replacement

This guide will describe how to disassemble the Harmony Hub to reach and replace the motherboard.

Written By: Lucas Reynolds



---

## INTRODUCTION

The Harmony Hub acts as a middle-man between devices and the remote. It has very few parts, making it a simple fix. The most difficult part of this guide is revealing the hub after removing the screws on the exterior. Once the hub is open, removing the motherboard requires just a few more screws to be removed and the release of a small tab that keeps the motherboard in place.




### TOOLS:

- [Phillips #0 Screwdriver](#) (1)
-

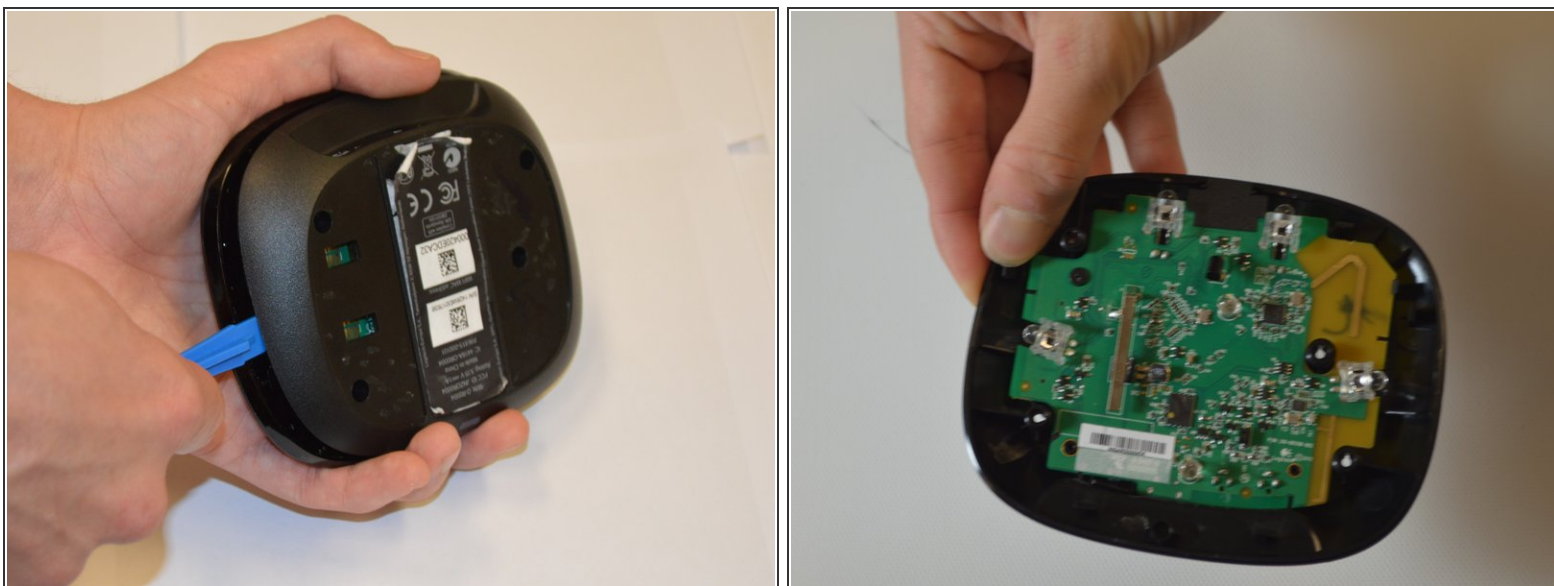
## Step 1 — Screws



 Screws are hidden beneath rubber pads.

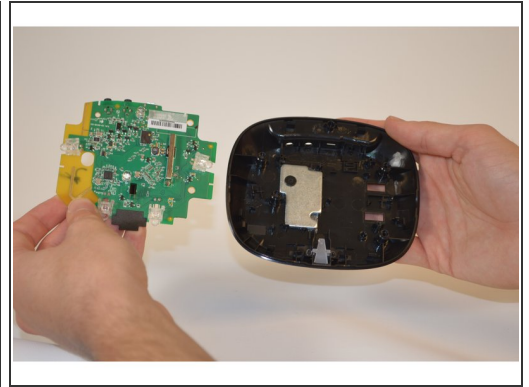
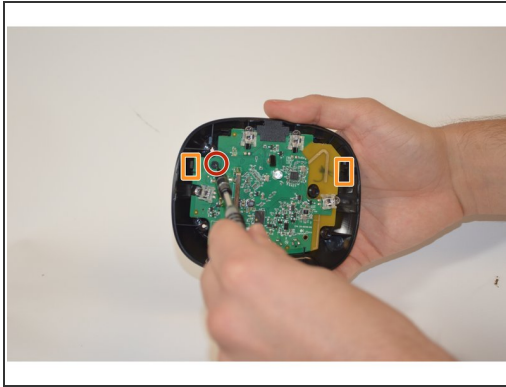
- Peel off the rubber pads.
- Remove the four 6mm Phillips #0 screws from the bottom of the hub.

## Step 2 — Top Shell



- Use a plastic opening tool to remove the top shell of the device.

## Step 3 — Motherboard



- Remove the single 6 mm Phillips #0 screw from the motherboard.
- Pull the black tabs back and lift the motherboard.

To reassemble your device, follow these instructions in reverse order.