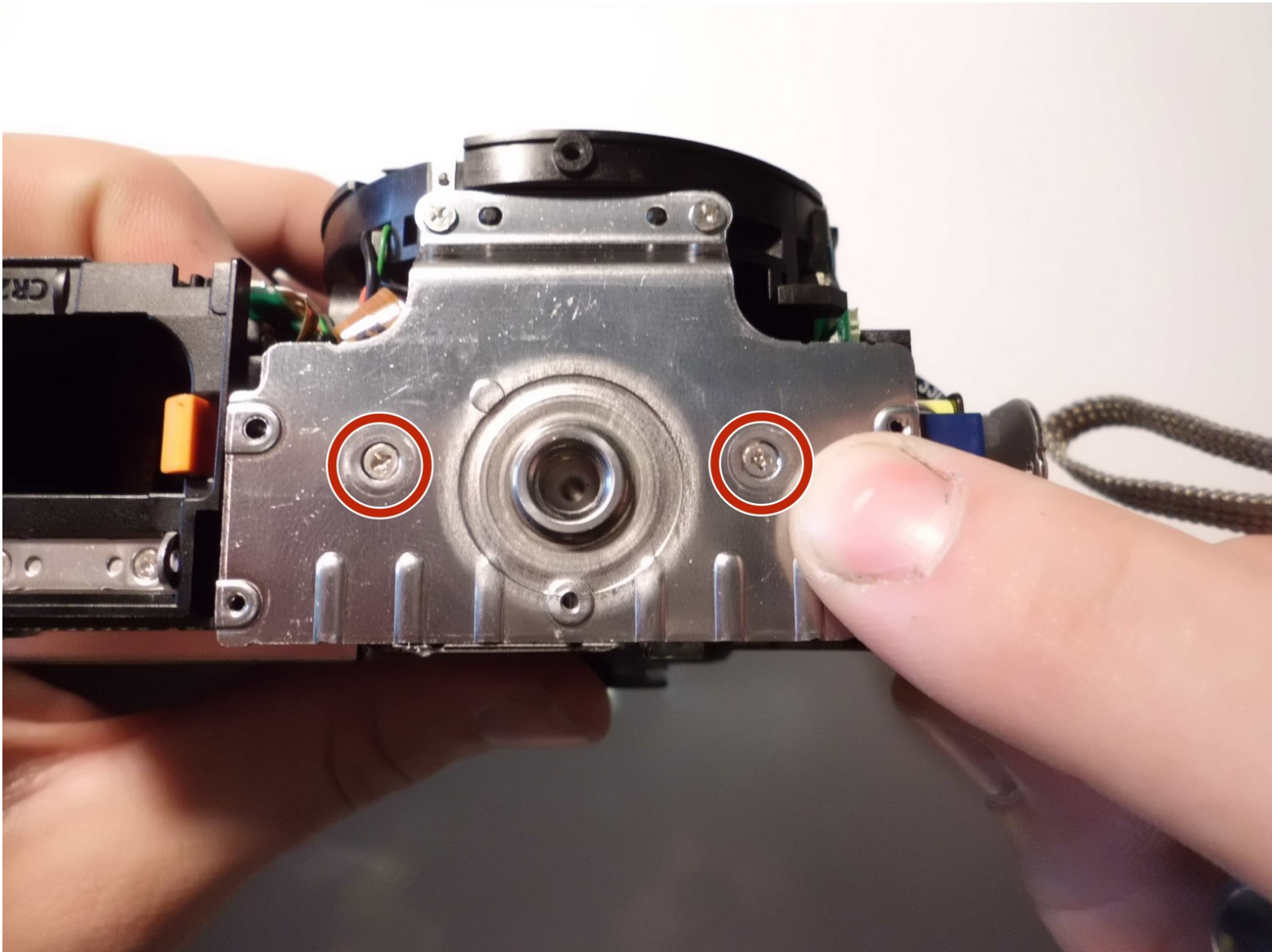




Canon EOS Rebel XTi Tripod mount Replacement

This guide will show how to replace the tripod mount if the mount threads strip.

Written By: Tyler percy



INTRODUCTION

Taking photos with a tripod can drastically increase the functionality of the camera and quality of the photos taken, so it is very important to retain the ability to mount the XTi on a tripod. By replacing the mount with stripped threads with a new mount, the XTi will be able to mount on a tripod properly.



TOOLS:

- [Magnetic Project Mat](#) (1)
 - [iFixit Opening Tools](#) (1)
 - [64 Bit Driver Kit](#) (1)
 - [Spudger](#) (1)
-

Step 1 — Battery



- Place the camera upside down, and position it to where the back of the camera is visible.

Step 2



- Pull the orange tab to the right to release the primary battery.

Step 3



- To remove the secondary battery, reposition the camera to where the display screen is facing upwards.
- Place your finger inside the empty battery compartment and pull away from the camera on the ridged battery tab.

Step 4 — Memory Card



- Place the camera on its side with the soft touch grip facing up and the top of the camera facing right.

Step 5



- Slide the memory card door in the direction of the arrow engraved on the camera.
- Once the door has slid open to its full position, lift up on the door.

Step 6



- With the door open, push down the small black plunger next to the CF slot. The CF card will disengage from the slot and be ejected far enough that you can grasp it between thumb and forefinger and remove it from the slot.

i The plunger will stay in its depressed position until a CF card is again inserted in the slot.

Step 7 — Back Casing



- Remove the three black 4 mm JIS #0 screws on the bottom of the camera.

Step 8



- Remove the two black 6 mm Phillips screws from the right side of the camera.

Step 9



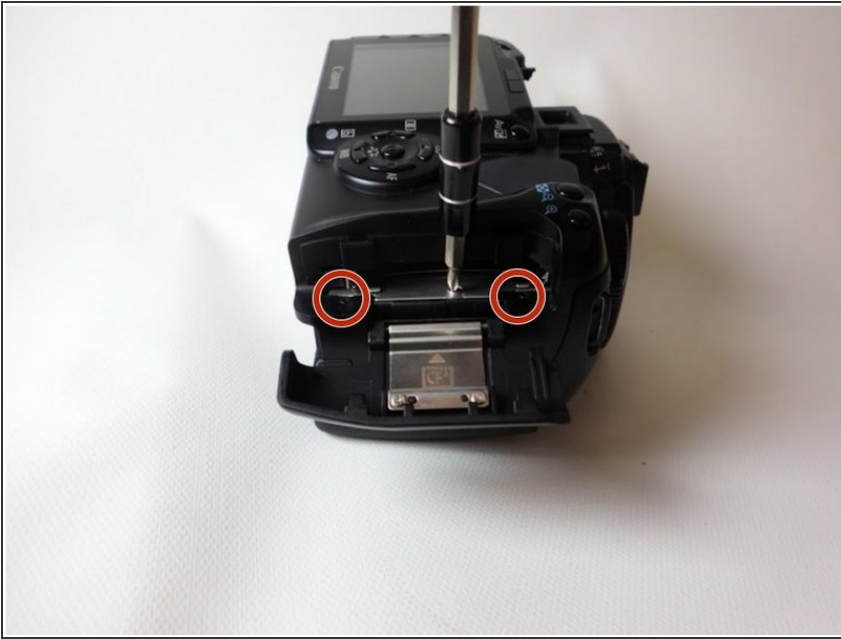
- Remove the two black 4 mm Phillips screws on each side of the camera under the strap hooks.

Step 10



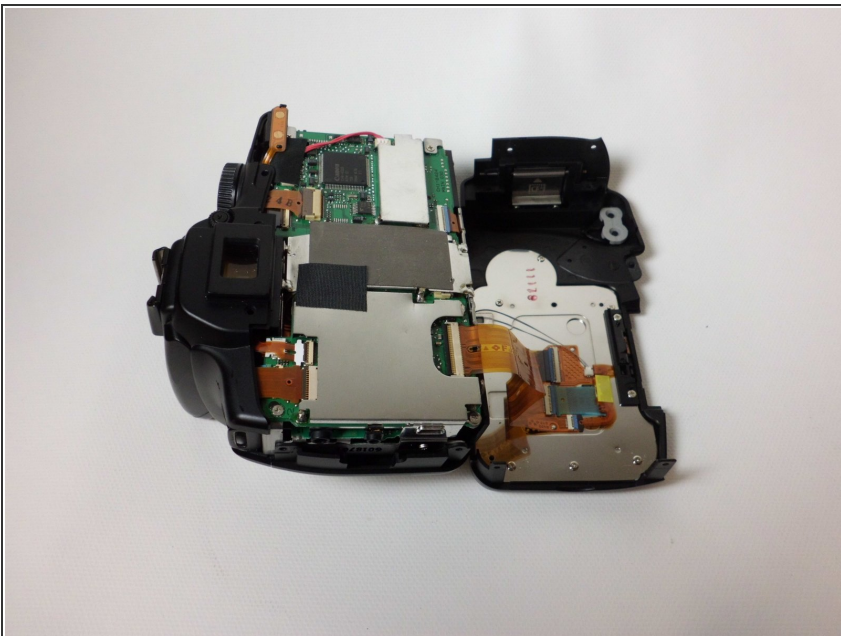
- Remove the two black 4 mm Phillips head screws on the side of the camera opposite to the hand grip.

Step 11



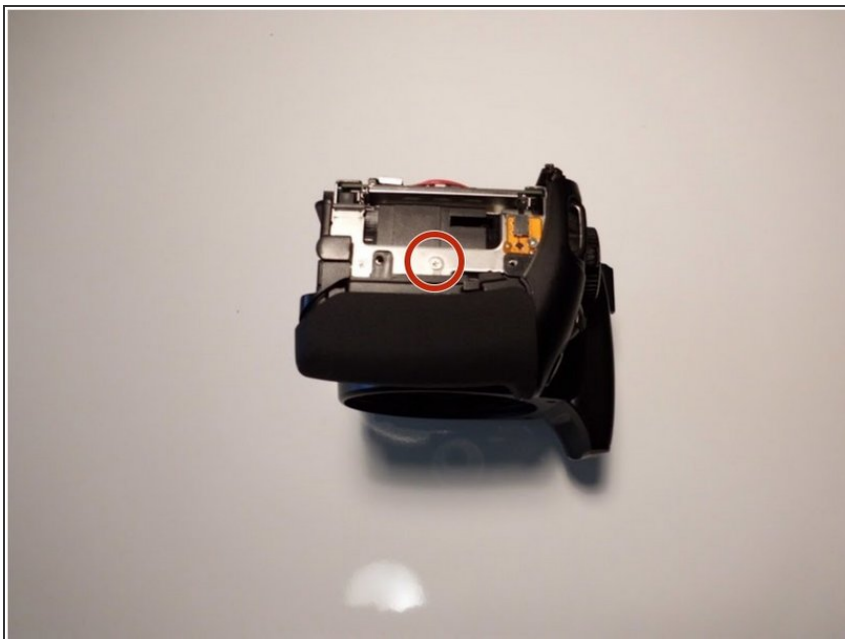
- Remove the three 1 mm Phillips #0 screws located in the memory card slot.
- ⓘ Two of these screws are black, and the third is silver.

Step 12



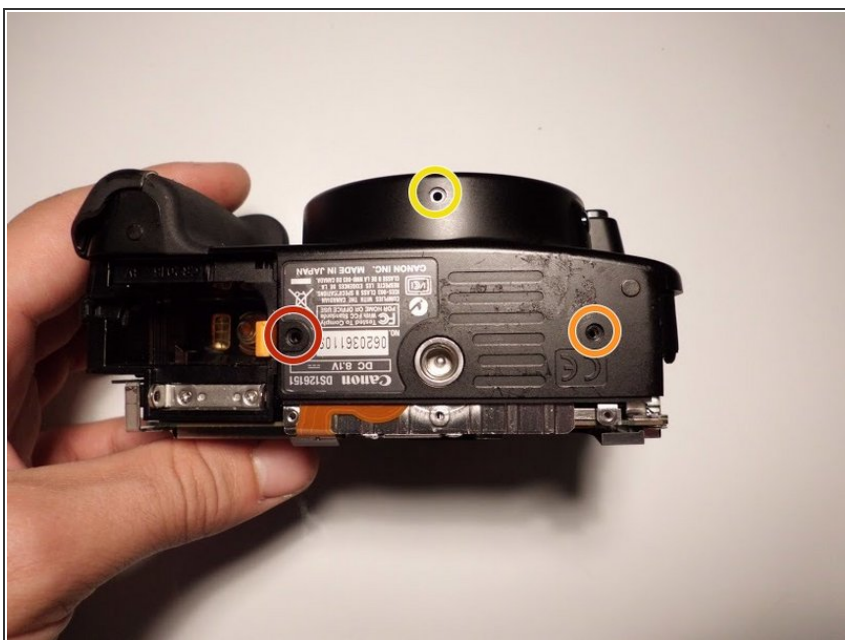
- Gently pry off the back casing.
- ⚠ Before completely removing the back casing, be sure to disconnect the single ribbon cable running from the motherboard to the LCD display.
- Use a spudger to lift the tab on the ribbon cable's ZIF connector.
- Gently pull the ribbon cable out of the connector.

Step 13 — Front Casing



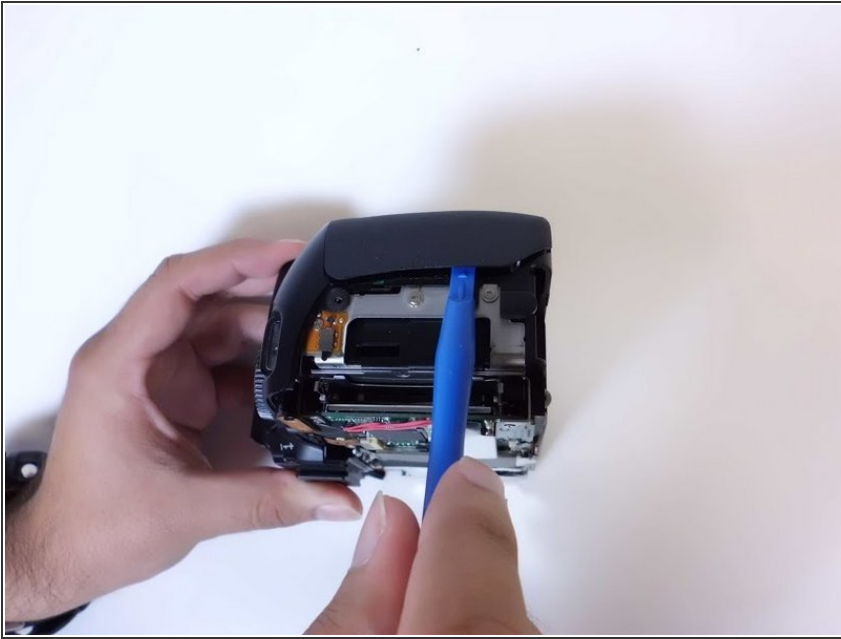
- Remove the single silver 3 mm Phillips screw.

Step 14



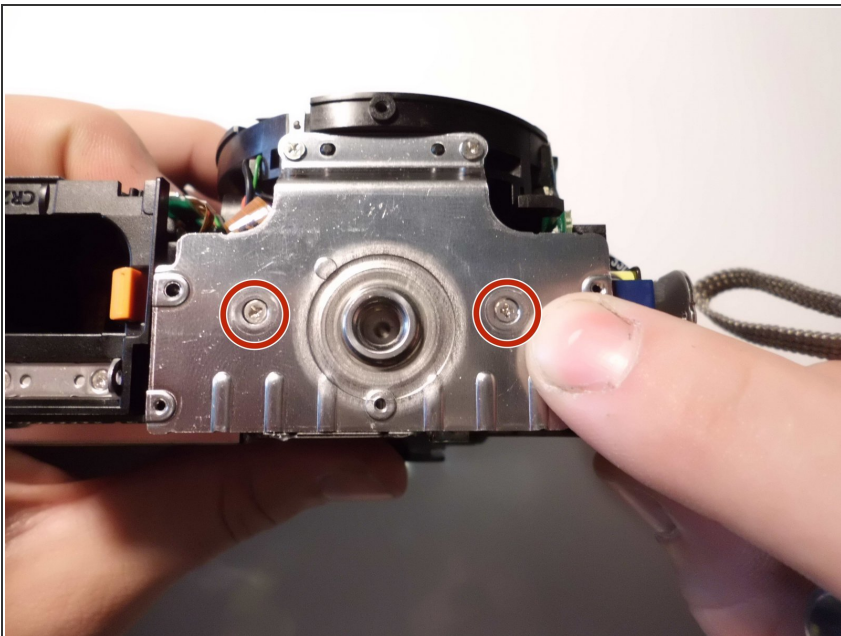
- Remove the single 6 mm Phillips screw.
- Remove the single 4 mm Phillips screw.
- Remove the single 3 mm Phillips screw on the bottom of the lens.

Step 15



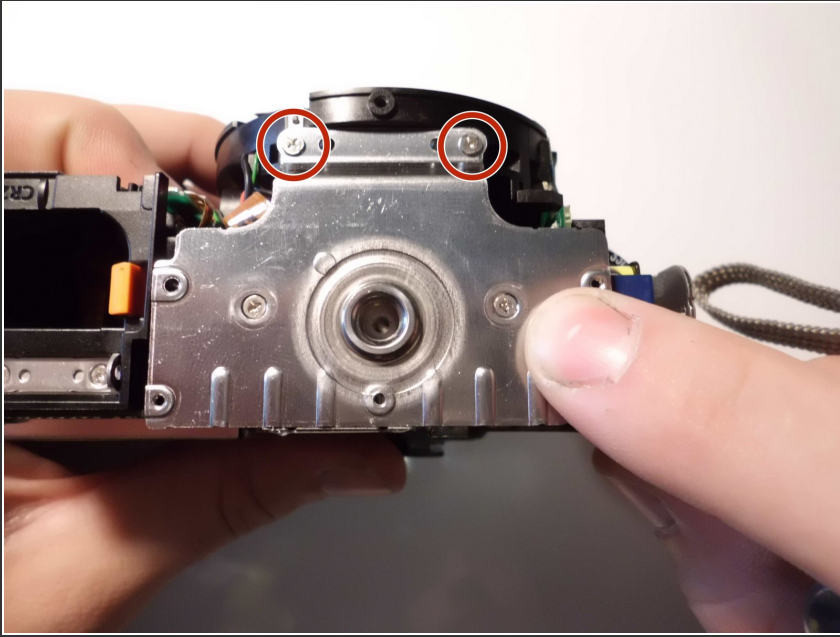
- Gently pry off the front casing.
- ⓘ There are no ribbon cables to remove for this portion of the disassembly.

Step 16 — Tripod mount



- Remove the two silver 1mm screws on either side of the tripod mount.

Step 17



- Remove the two silver 6 mm screws towards the front of the camera on the tripod plate.

To reassemble your device, follow these instructions in reverse order.