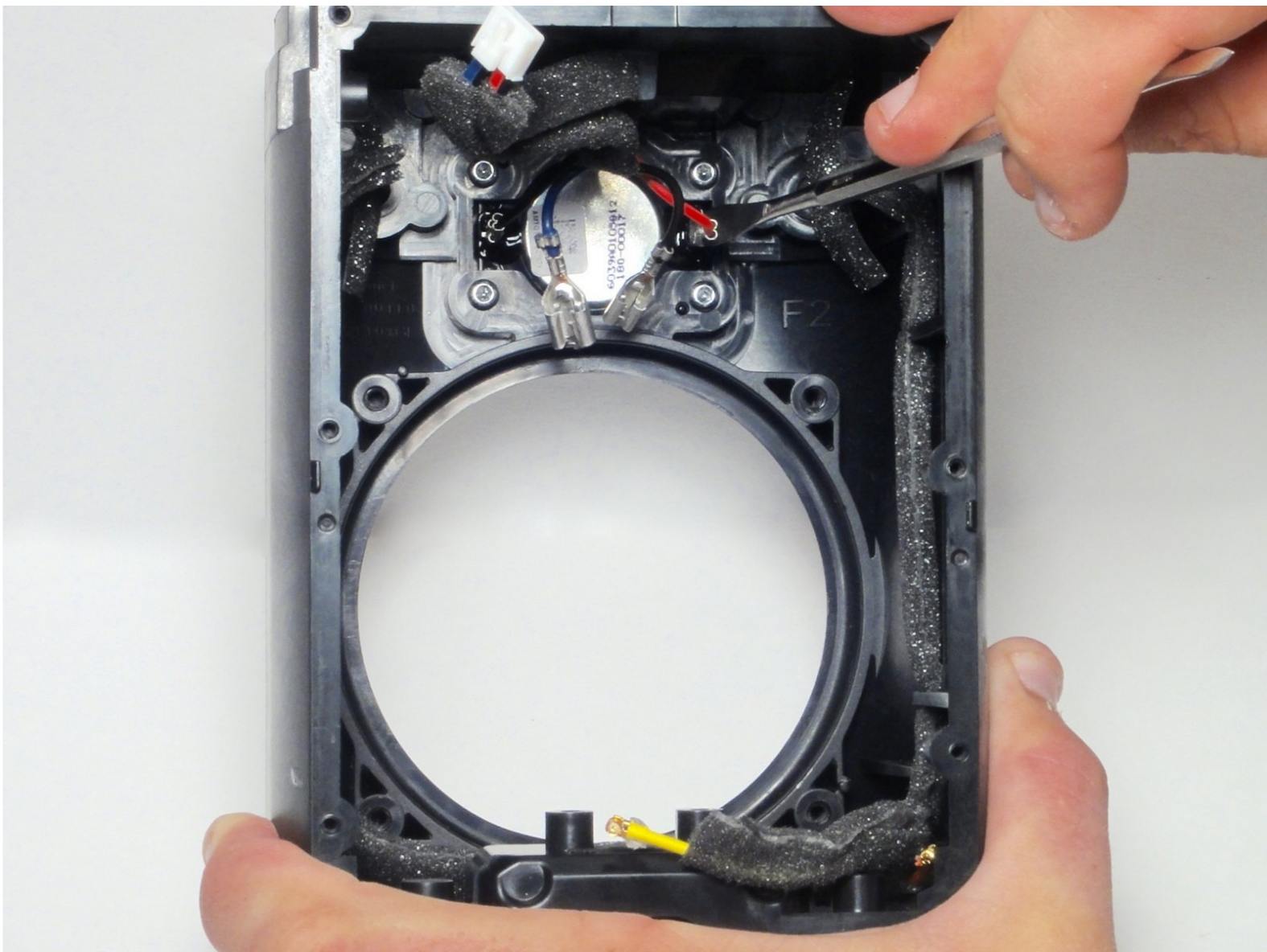




Sonos Play 1 Tweeter Speaker Replacement

The guide will demonstrate a step by step process on how to disassemble the device and remove the tweeter speaker. (Requires screwdriver, prying tools, and tweezers)

Written By: Gregory Klein



INTRODUCTION

A tweeter creates a crisp and accurate high-frequency sound. If the device tweeter is not working, the tweeter may be damaged and may need to be replaced. This guide will demonstrate how to replace the tweeter.



TOOLS:

- [64 Bit Driver Kit](#) (1)
 - [Tweezers](#) (1)
 - [Metal Spudger](#) (1)
 - [iFixit Opening Tools](#) (1)
 - [Tweezers](#) (1)
-

Step 1 — Exterior Screen



- Remove the rubber footing from the bottom of the device. Pry it up from one end using one of the plastic opening tools.
- Once you pry open one end, use precision tweezers to remove rubber footing.

Step 2



- Using a metal spudger, pry open a corner of the adhesive tape.
- Use precision tweezers to remove the adhesive tape.

Step 3



- Remove the four 10 mm Torx security #10 screws that hold the base together.
- Remove the base by lifting it vertically away from the bulk of the device.

Step 4



- Remove the 10 mm Torx security #10 screw that holds down the exterior screen.
- Using precision tweezers, remove the metal bracket.

Step 5



- Remove the exterior screen by lifting it away from the bulk of the device.

Step 6 — Sonos Play 1 Top Cover Disassembly



- Remove the four 9 mm Torx Security #9 head screws. There are two on each side.

Step 7



- Using a plastic opening tool, pry open the top cap containing the power and volume button.
- Vertically remove the top cap.

⚠ Be sure to not jerk the top cap when removing , as to not damage the cable linking the switchboard to the motherboard.

Step 8



- Using a plastic opening tool, pry open the circuit flap.
- Once flap is loosened, use your hand to remove the circuit wire.

Step 9 — Disassembling Sonos Play 1 Rear Housing Cover



- Using a plastic opening tool, remove the grey tape from both sides of the device.

Step 10



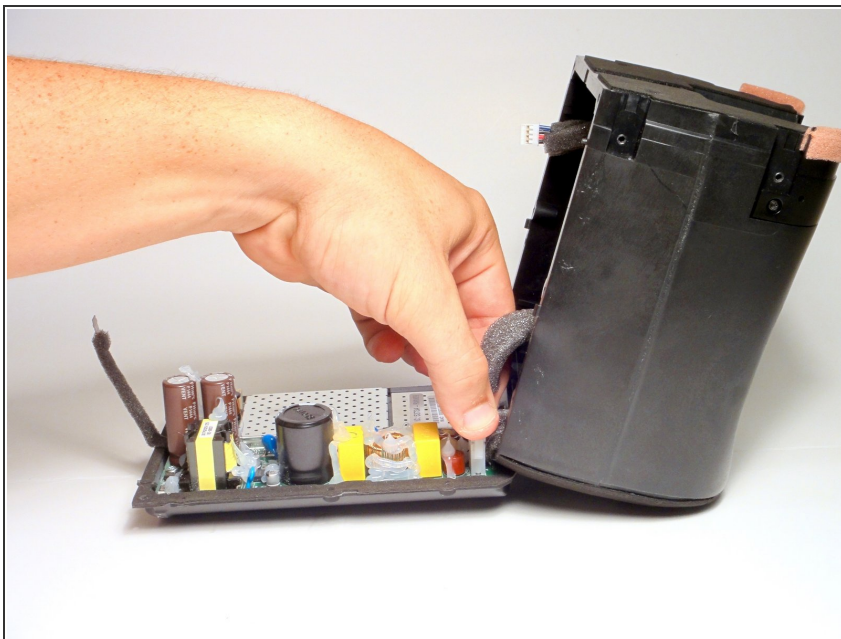
- Remove the six 9 mm Torx #9 screws.
 - Using a plastic opening tool, detach the rear housing cover from the housing.
- ⚠ Try not to jerk the rear housing cover, as its wires are still connected to delicate electronics.

Step 11



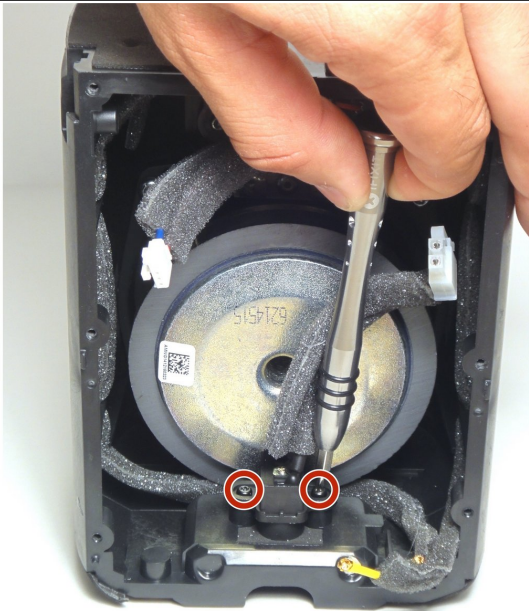
- Using tweezers, grip the connector fixed to the motherboard's audio cable.
- While pulling on the connector, detach the cable by pressing the connectors release.

Step 12



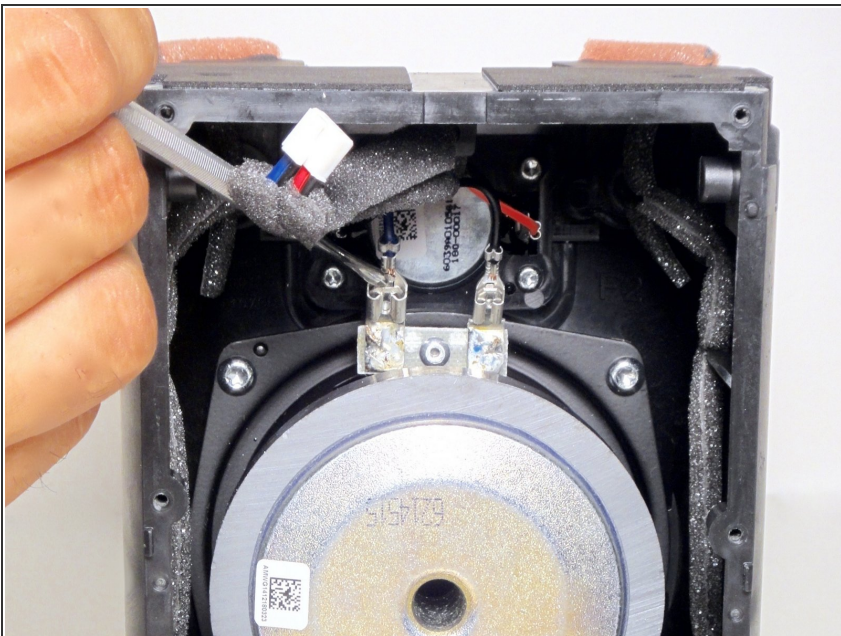
- Using your fingers, grip the connector fixed to the motherboards power cable and detach it.
- You will now be able to remove the rear housing cover.

Step 13 — Mid-Woofer speaker



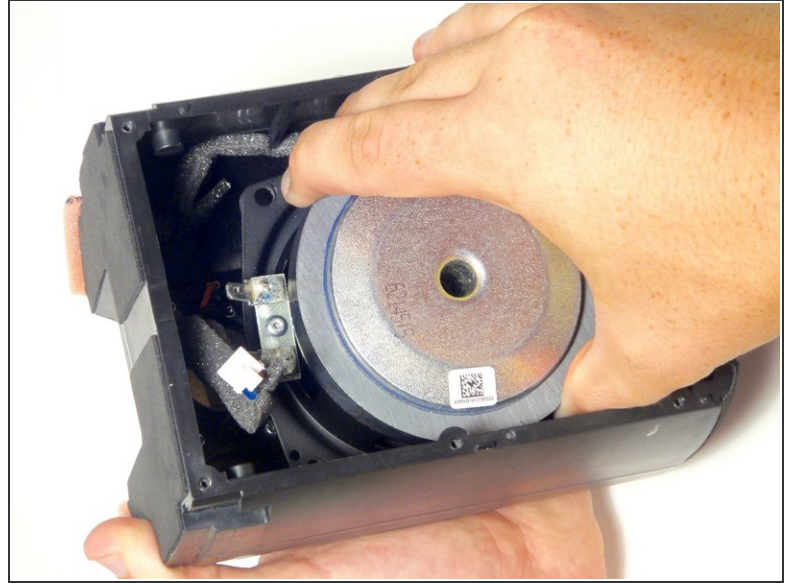
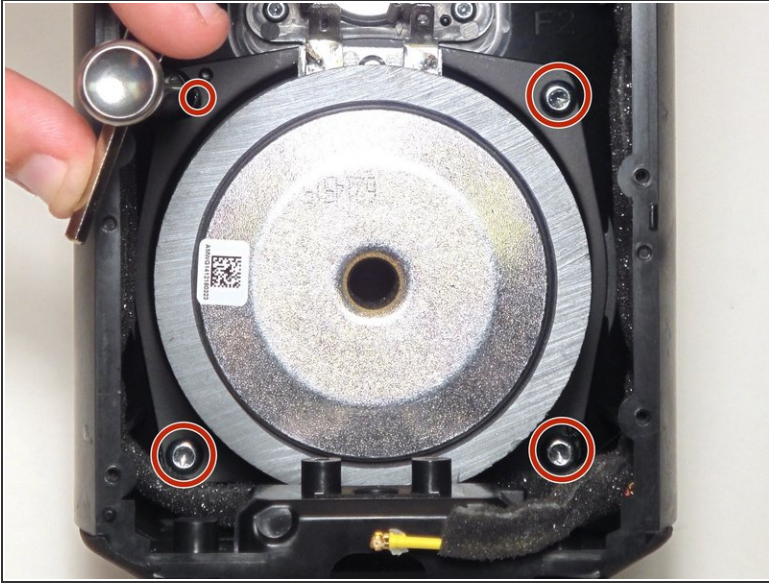
- Remove the two 9mm Torx #9 screws fastening the power cable to the housing.
- Remove the power cable.

Step 14



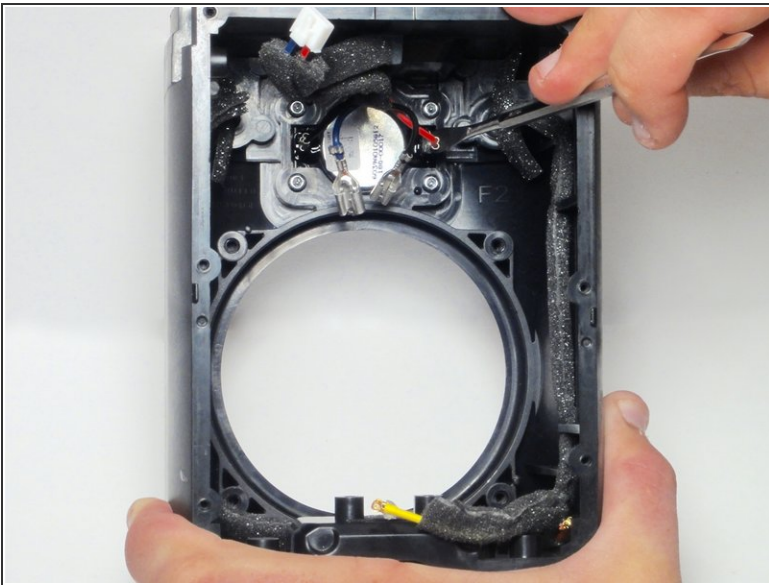
- Using a metal spudger, press the release located in the center of the connector .
- While pressing the release pull on the connector detaching it from the speaker.
- Do this for both connections.

Step 15



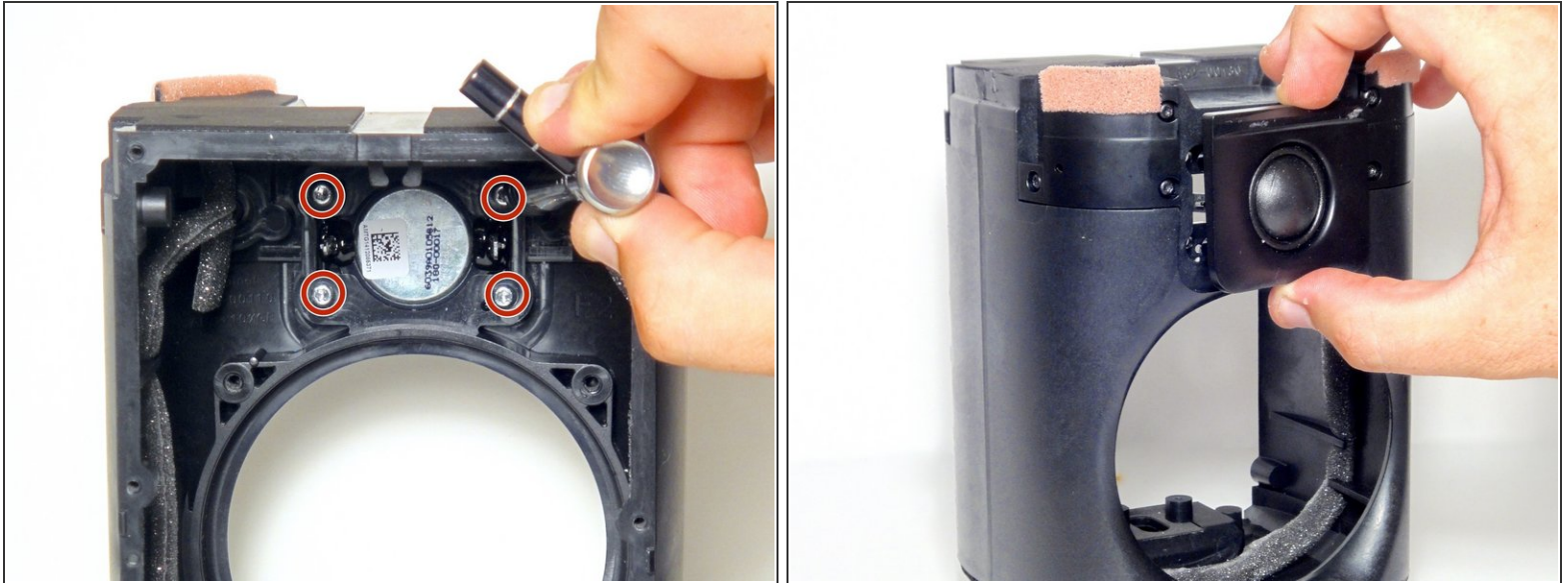
- Using the Torx T20 bit remove the four 13 mm screws fastening the speaker to the housing.
- Remove the speaker by lifting it up towards the top of the housing and out at an angle.

Step 16 — Tweeter Speaker



- Using a metal spudger, press down on the clips that lock the input wires to the amplifier.
- Once unlocked, pull back on the wires to remove them.

Step 17



- Using a screwdriver, remove the four 10 mm Torx Security #10 screws.
- Using your fingers, remove the tweeter from the front of the housing.

To reassemble your device, follow these instructions in reverse order.