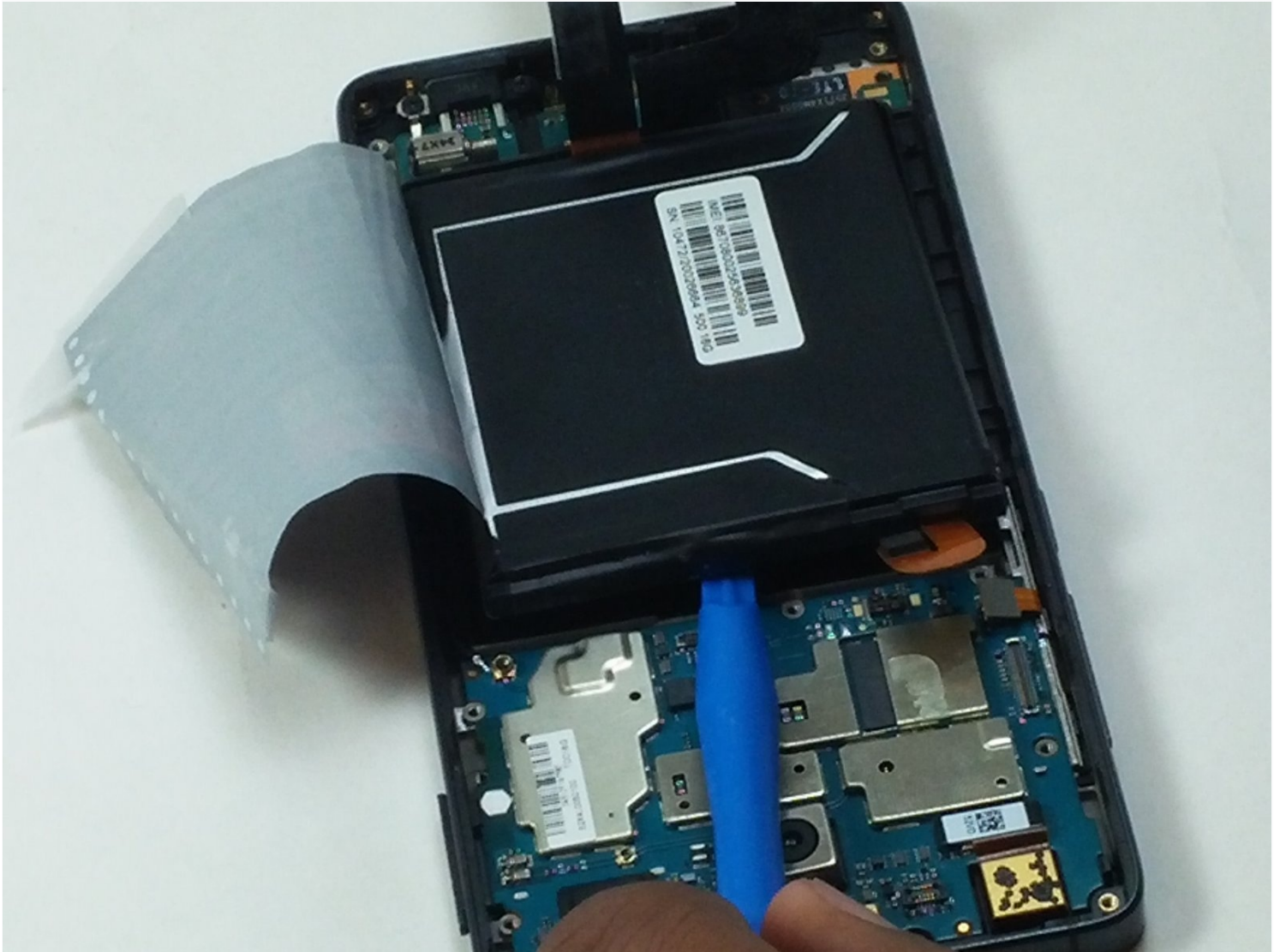




Xiaomi Mi 4 Battery Replacement

Batteries are meant for reuse, but if they...

Written By: William Pendeergraft



INTRODUCTION

Batteries are meant for reuse, but if they don't recharge then they may need to be replaced. This guide will show you how to safely remove your mobile device's battery.

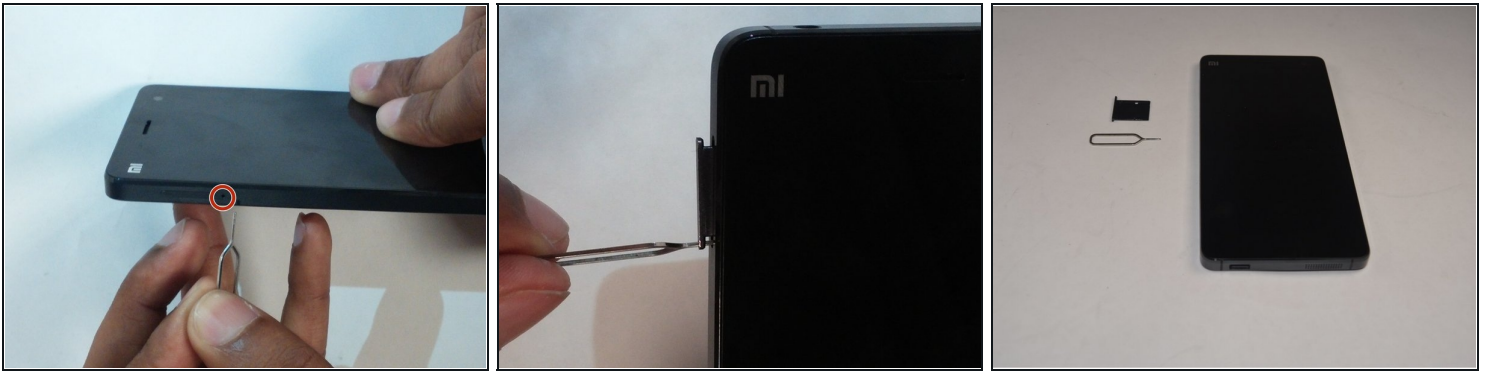
TOOLS:

Metal Spudger (2)
SIM Card Eject Tool (1)
Suction Handle (1)
Phillips #000 Screwdriver (1)
iFixit Opening Tool (1)
Tweezers (1)

PARTS:

Xiaomi Mi 4 Battery (1)

Step 1 — Rear Case/Midframe



 Check to make sure that the device is powered off.

- Use a pin or paper clip to insert in the hole on the side of the phone next to the micro SIM cardholder to remove the tray.
- Remove the SIM card tray from the Xiaomi Mi 4 and store it somewhere safe.

Step 2



- Using the flat [metal spudger](#) and curved metal spudger, make a wedge between the plastic back cover and the inner frame
- Using the second spudger, slowly work your way around the perimeter of the device
 - ⓘ Listen for clicking sounds as you are prying the back cover away from the frame
- As the back cover is almost completely removed, use the suction-cup tool to remove the plastic cover without damaging the back

Step 3



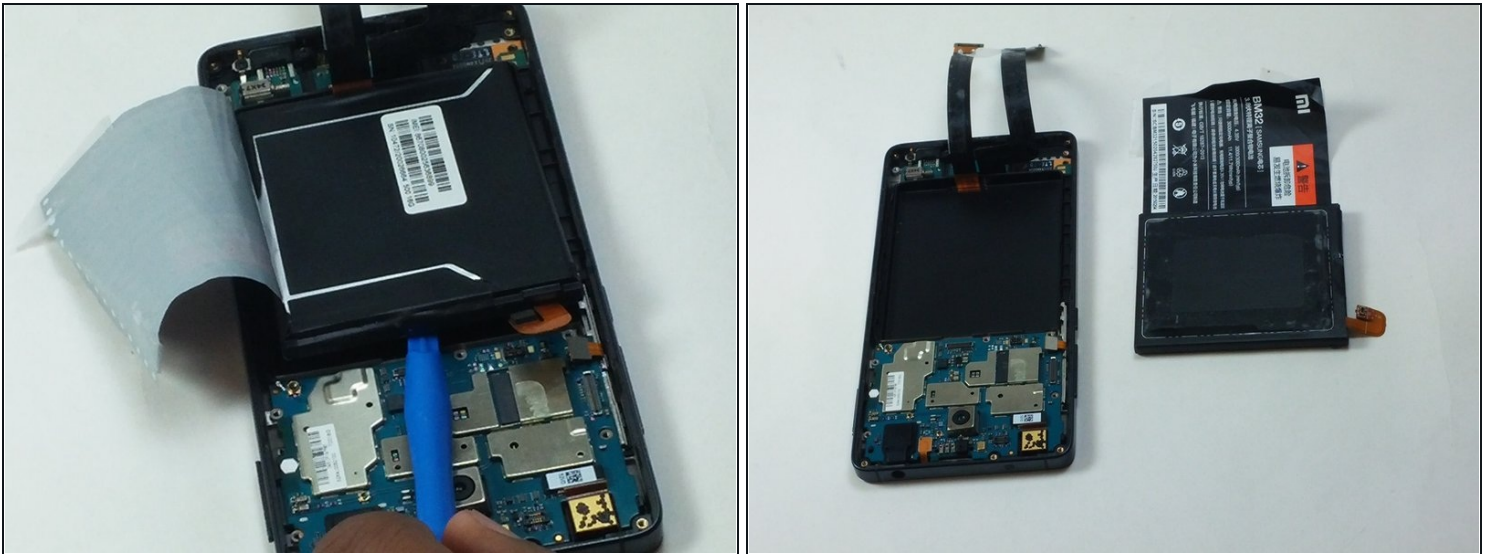
- Use a 000 Phillips head screwdriver to remove the 10 1.2mm Phillips head screws in the plastic frame that hold the motherboard and battery.
- Use a 000 Phillips head screwdriver to remove the 3 0.5mm Phillips head screws in the plastic frame that hold the motherboard and battery.
- Use the small plastic opening tool and place it in the slot on the bottom right corner of the inner frame and carefully pry it off.

Step 4 — Battery



- Use [tweezers](#) to gently disconnect the connections that run across the battery and are connected to the motherboard.
- Proceed to gently remove the tape like connector from the battery until it is completely off.
- Use tweezers to disconnect battery's wire from the motherboard.

Step 5



- Use the plastic opening tool to gently pry the battery out of its casing for removal.

To reassemble your device, follow these instructions in reverse order.