



Nikon Coolpix S4100 External Casing Replacement

This guide will demonstrate how to properly remove the entire external casing of the camera. This procedure will allow you to replace these parts if they are broken, as well as access the internal components of the camera to repair or replace other parts.

Written By: Matthew Willis



INTRODUCTION

In this guide, you will find instructions on how to properly remove the entire external casing of the camera. This guide will reveal the inner components of the camera. From here, you can replace the casing if it is broken, or access other internal parts of the camera.



TOOLS:

- [Phillips #000 Screwdriver](#) (1)
 - [iFixit Opening Tools](#) (1)
 - [Spudger](#) (1)
-

Step 1 — External Casing



- Using a Philips #000 head screwdriver, remove the 8 screws (3.30 mm) visible on the external part of the camera.
- There are 2 on each side, and 4 on the bottom.

Step 2



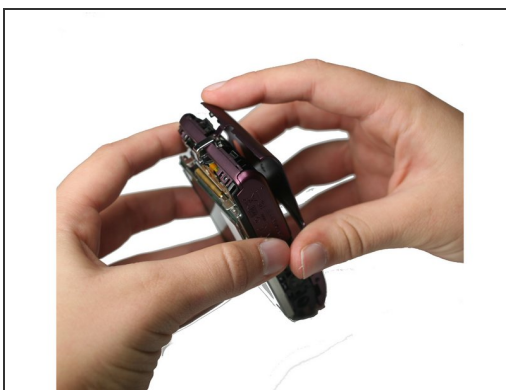
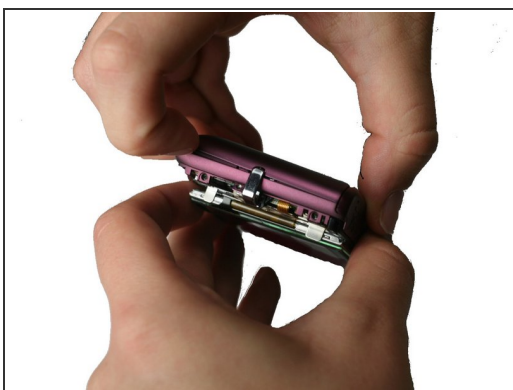
- Remove the black casing on the back of the camera that runs around the LCD screen.

Step 3




- Using the Philips #000 head screwdriver, remove the 1.90 mm internal screw located just above the lanyard mount.

Step 4



- Pry off the front shell casing.

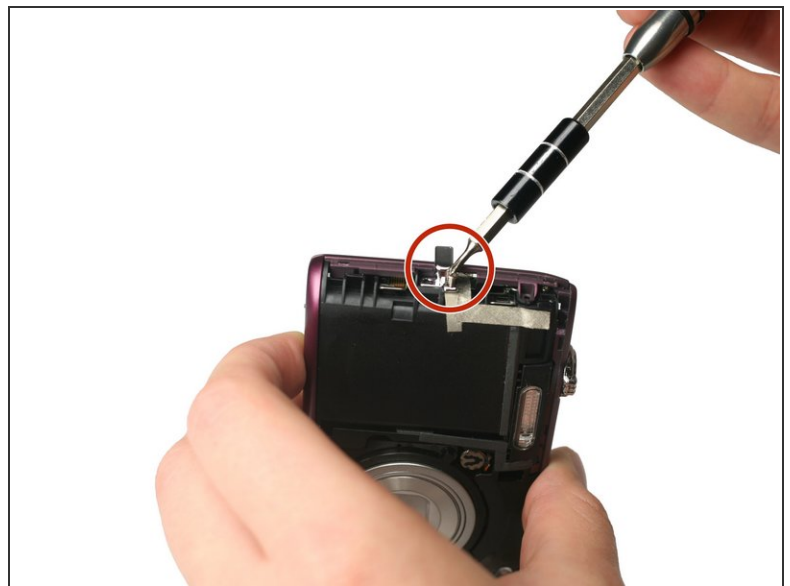
 If you find this difficult, use a prying tool to help gently remove the casing.

Step 5



- Using the Philips #000 head screwdriver, remove the 3.30 mm screw located on the side of the camera near the lanyard mount.

Step 6



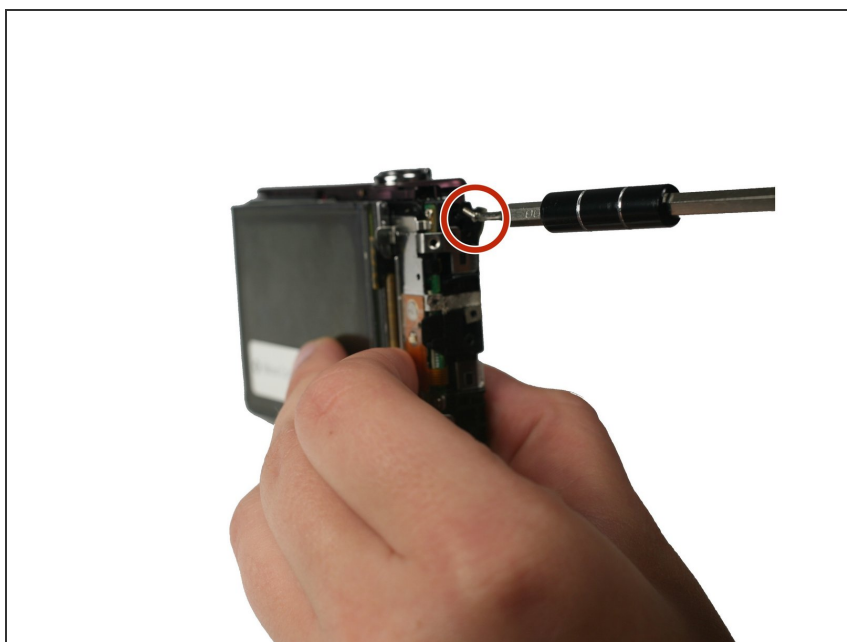
- Using the Philips #000 head screwdriver, remove 2 additional 3.30 mm screws holding the lanyard mount in place.

Step 7



- Remove the lanyard mount and accompanying side shell casing off of the camera.

Step 8



- Using the Philips #000 head screwdriver, remove the 3.30 mm screw securing the top shell casing.

Step 9



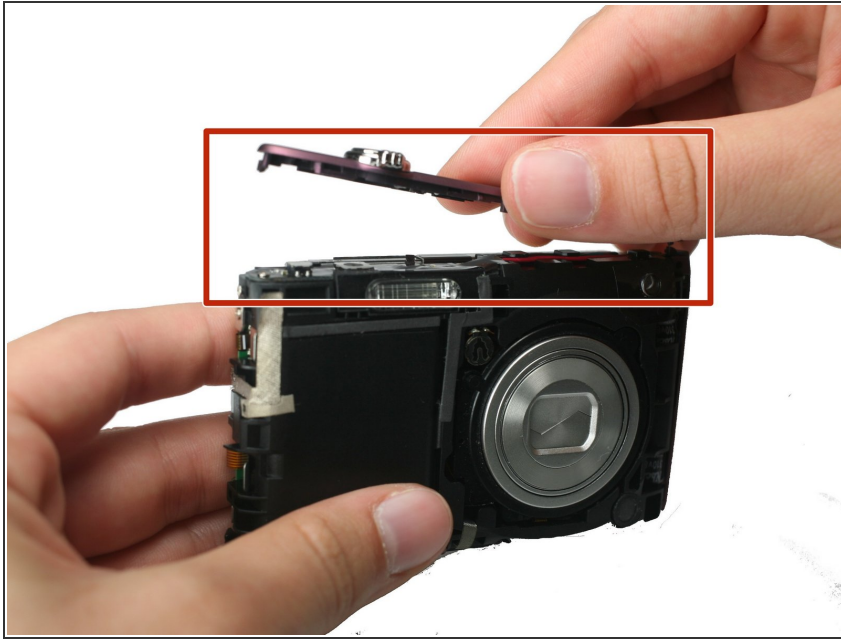
- Using the Philips #000 head screwdriver, remove the 3.40 mm screw located on the front of the camera in the upper corner by the LED light.

Step 10



- Remove the remaining side shell casing.

Step 11



- Remove the top shell casing.

To reassemble your device, follow these instructions in reverse order.