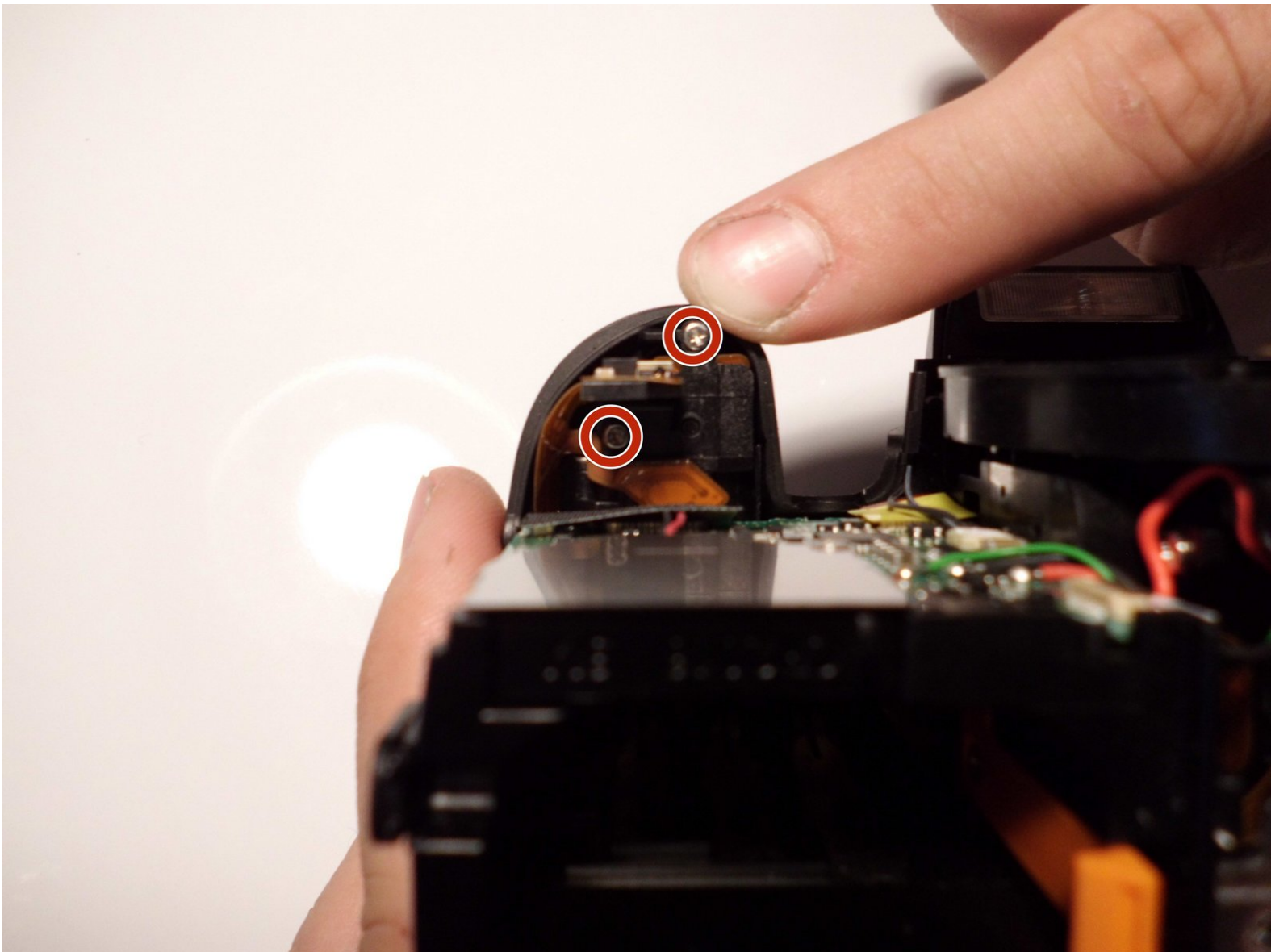




Canon EOS Rebel XTi Snapshot Button Replacement

Replace Snap Shot button that is stuck in place or worn out so that the camera can function properly.

Written By: Luis Calle



INTRODUCTION

After long term use, it is possible that the snap shot button on your camera needs to be replaced. While replacing this component may be somewhat involved, it can restore functionality to your camera.



TOOLS:

- [Tweezers](#) (1)
 - [JIS #00 Screwdriver](#) (1)
-

Step 1 — Battery



- Place the camera upside down, and position it to where the back of the camera is visible.

Step 2



- Pull the orange tab to the right to release the primary battery.

Step 3



- To remove the secondary battery, reposition the camera to where the display screen is facing upwards.
- Place your finger inside the empty battery compartment and pull away from the camera on the ridged battery tab.

Step 4 — Memory Card



- Place the camera on its side with the soft touch grip facing up and the top of the camera facing right.

Step 5



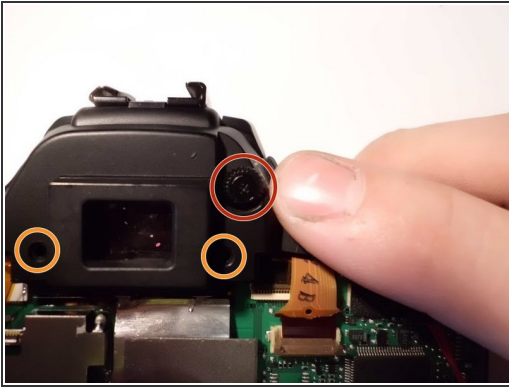
- Slide the memory card door in the direction of the arrow engraved on the camera.
- Once the door has slid open to its full position, lift up on the door.

Step 6



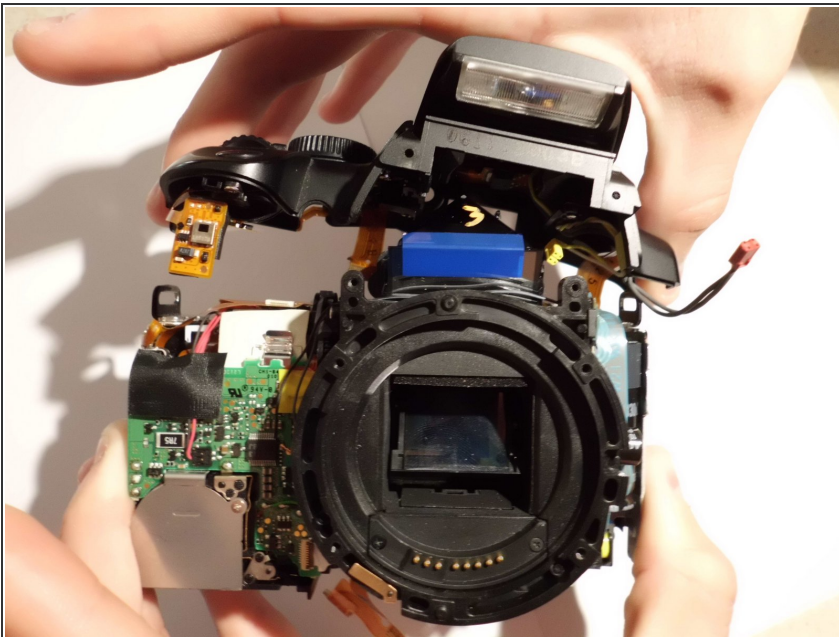
- With the door open, push down the small black plunger next to the CF slot. The CF card will disengage from the slot and be ejected far enough that you can grasp it between thumb and forefinger and remove it from the slot.
- ⓘ The plunger will stay in its depressed position until a CF card is again inserted in the slot.

Step 7 — Top Casing



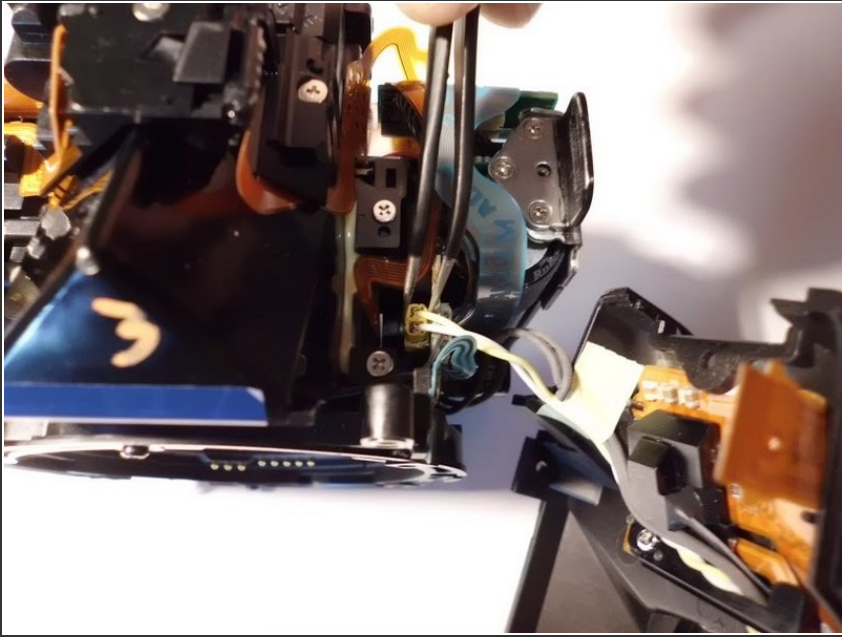
- Remove the single 10 mm JIS #00 shoulder screw.
- Remove the two 6 mm JIS #00 screws.

Step 8



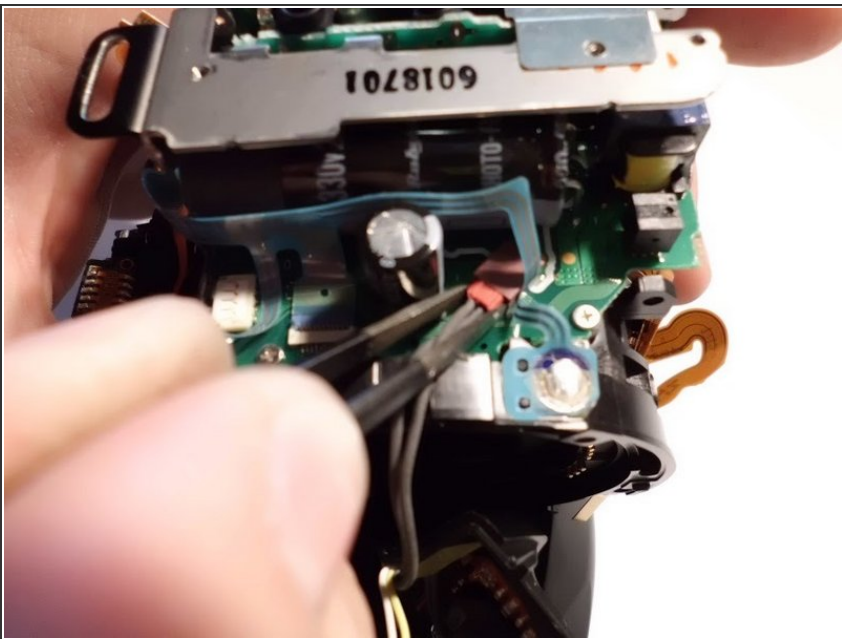
- Separate the top casing from the electrical components enough to expose the wire harnesses that will need to be disconnected.
- ⚠ Ensure to remove the casing gently. There are several wire harnesses connecting the motherboard to components on the casing.

Step 9



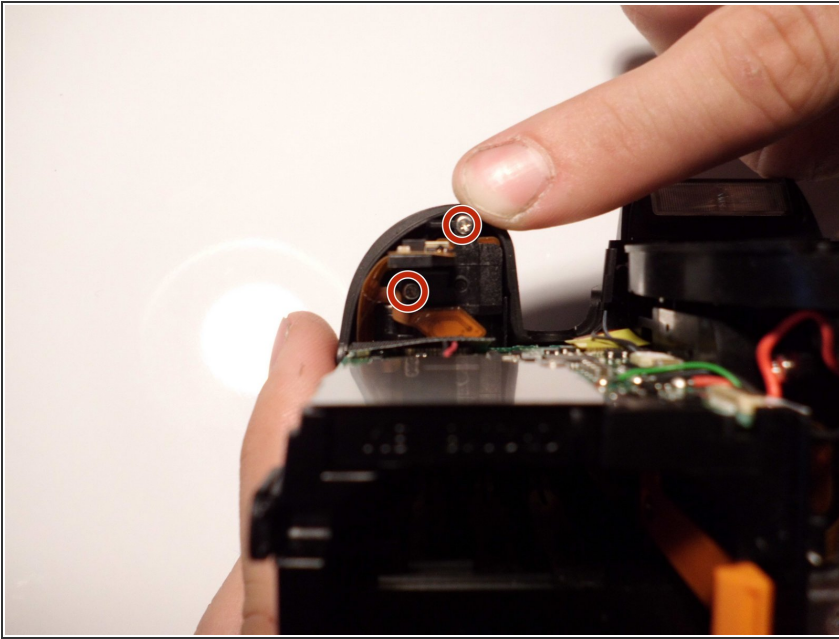
- Unplug the yellow connector located on the top of the camera.

Step 10



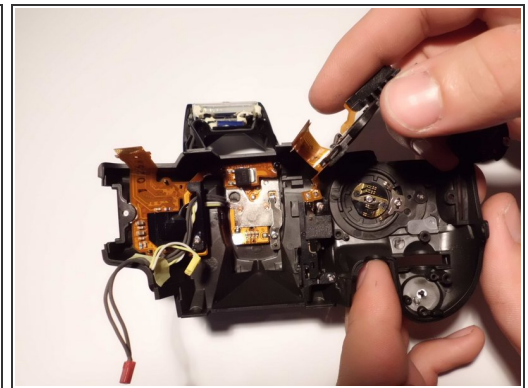
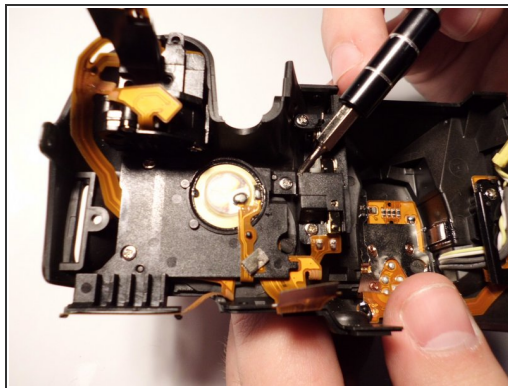
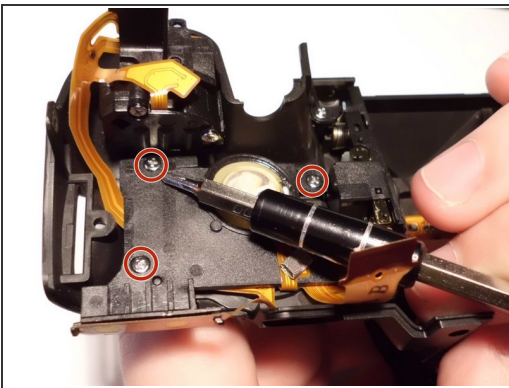
- Disconnect the red connector located by the USB port.

Step 11 — Snapshot Button



- Use a J00 screwdriver to remove the two silver 4 mm screws from underneath the snapshot button.

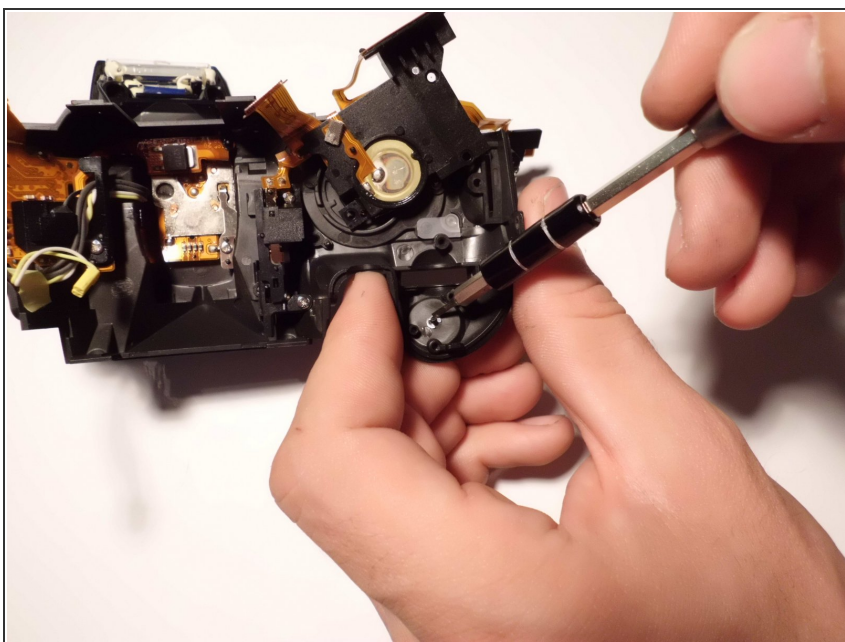
Step 12



- Use a J00 screwdriver to remove the 3 mm screws from the plate under snapshot the snapshot button.
- Place the components off to the side without removing any ribbons.

⚠ Be careful as ribbon cables are fragile and may rip easily.

Step 13



- Use a 1.5 flat head bit to remove the c-clip from underneath the snapshot button by pushing against the open side of the pin.

To reassemble your device, follow these instructions in reverse order.