



LG G Pad 8.3 Rear Facing Camera Replacement

This guide will show you how to replace the rear facing camera.

Written By: Mario Salguero



INTRODUCTION

If your rear facing camera is not working, it may be time to replace it. This guide will show you how to replace the rear facing camera.

TOOLS:

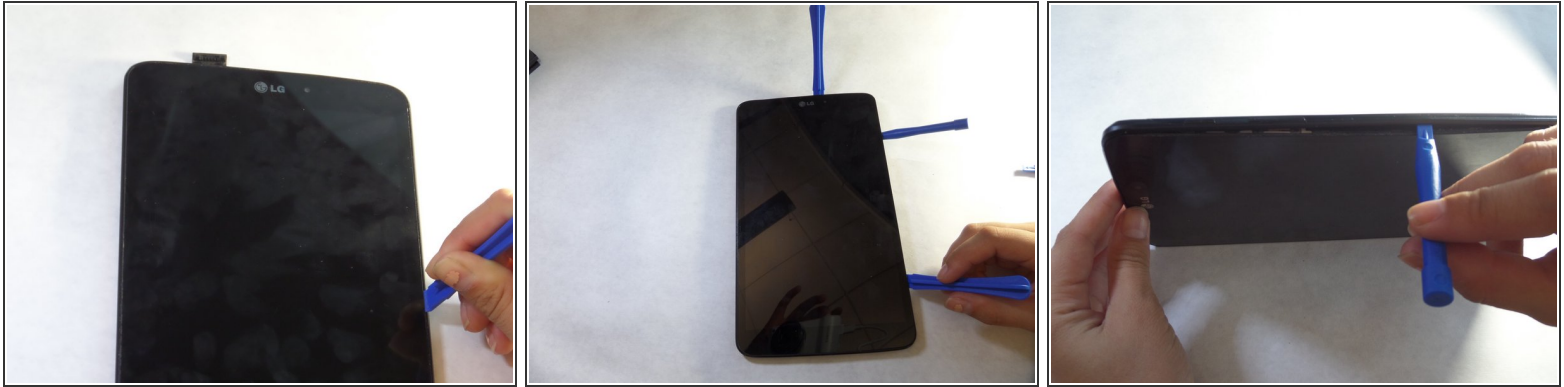
- [Metal Spudger](#) (1)
 - [Phillips #00 Screwdriver](#) (1)
 - [Phillips #000 Screwdriver](#) (1)
 - [iFixit Opening Tools](#) (1)
 - [iOpener Kit](#) (1)
-

Step 1 — Back Panel



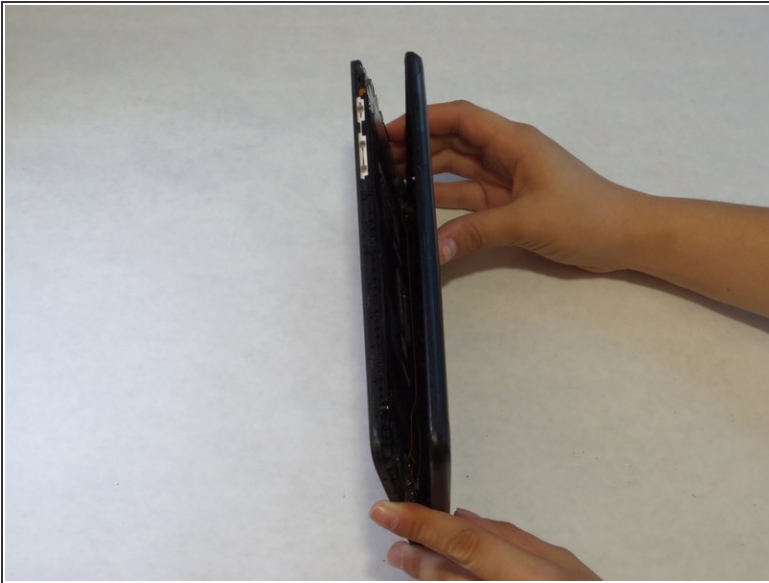
- With the tablet face down, pull the SD card slot cover out.
- Using a Phillips #000 screwdriver, remove the 3mm screw located in the SD card slot.

Step 2



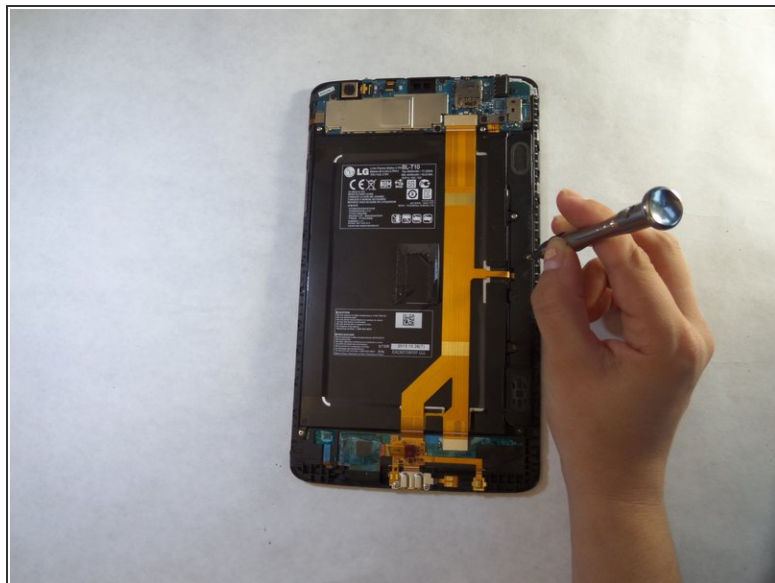
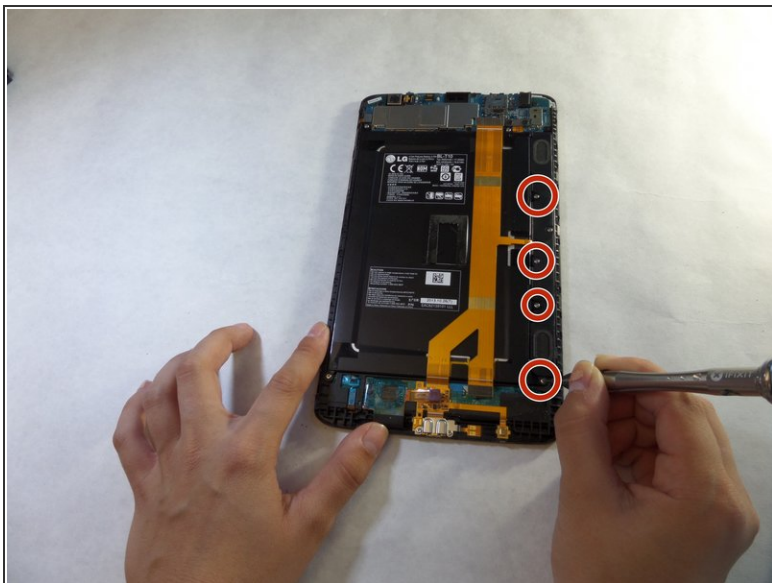
- Insert a plastic opening tool in the small crevasse between the screen and the back panel.
 - Pry the screen away from the back panel.
 - Repeat this on each edge of the device.
- i** We found it helpful to leave multiple plastic opening tools wedged in the crevasse to prevent it from closing.
- i** This requires heavy force. The back of the device is attached with an adhesive. If the back panel is too hard to remove, use the [iOpener](#).

Step 3



- After using the plastic opening tools, pry the device open with your hands.
- Remove the back panel from the screen.

Step 4 — Speaker



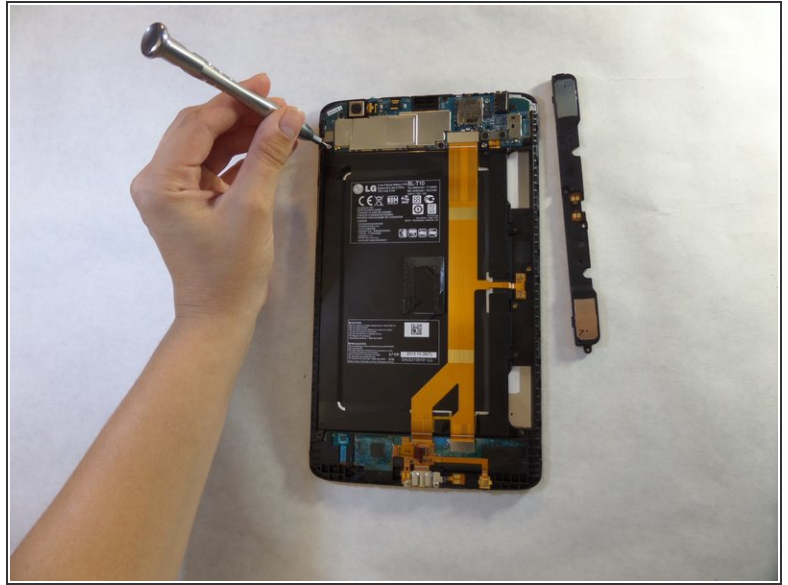
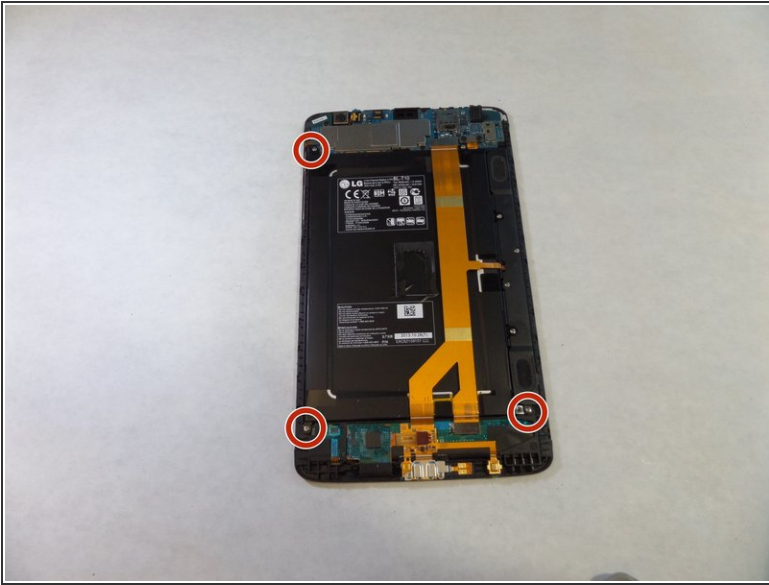
- Remove the four 3 mm Phillips #000 screws that are attached to the speaker.
- ⓘ These screws are very small so make sure to keep track of them. You can use iFixit's [Pro Magnetic Project Mat](#) to help.

Step 5



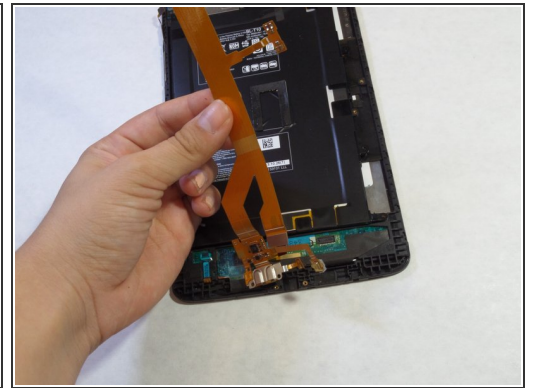
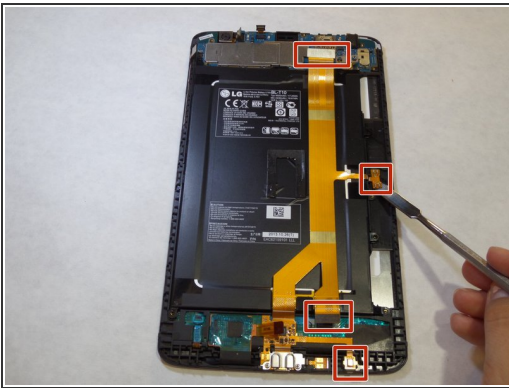
- Use your fingers to remove the speaker.

Step 6 — Battery





- Remove the 3mm Phillips #000 screws from the corners of the battery.

Step 7



- Using a spudger or a plastic opening tool, disconnect the ribbon cable from the right side of the device.

 The cable is attached with an adhesive.

 These images use a metal spudger, which has the potential to damage the device. Use a plastic opening tool or standard spudger instead.

Step 8



- Using the Phillips #000 screwdriver, remove the two 3mm screws located at the bottom of the ribbon cable.
- Remove the ribbon cable from the device.

Step 9



- Unhook the battery from the top of the device.

Step 10 — Motherboard



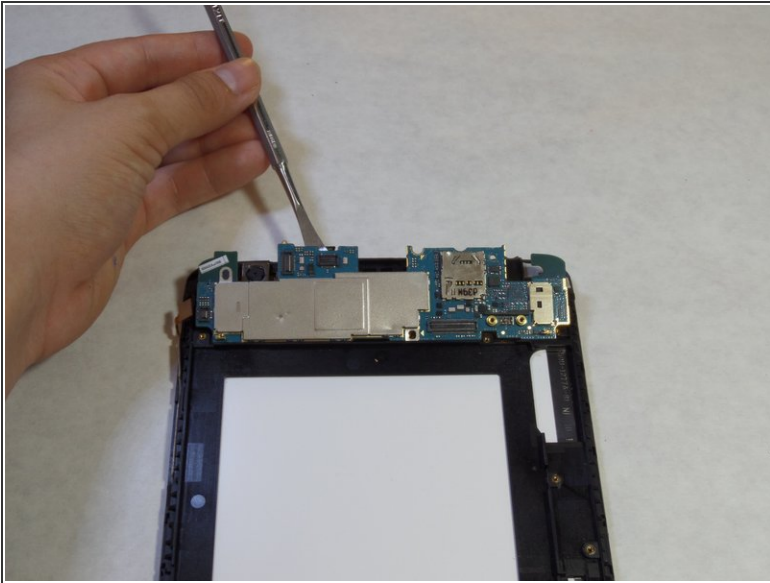
- Unhook the small yellow ribbon on top of the motherboard.

Step 11



- Remove all the 3mm silver screws and the 2mm black screws on the motherboard and carefully lift it out of the device.

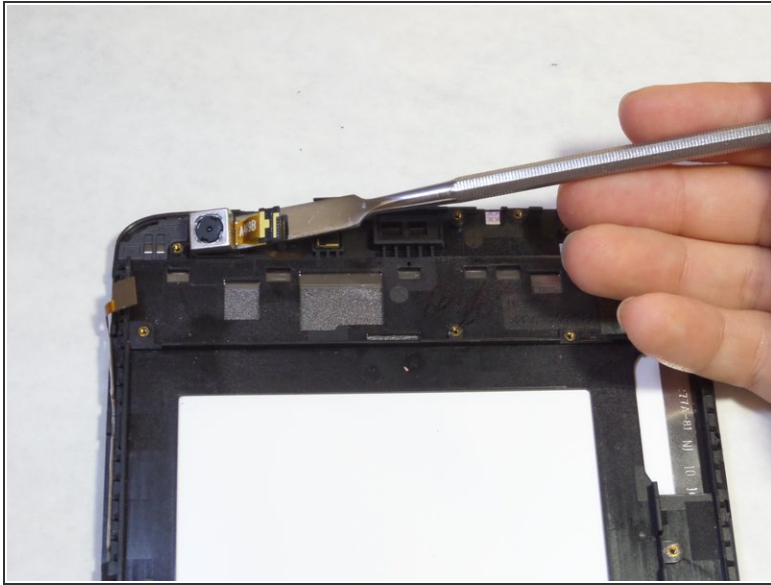
Step 12




- Use a plastic opening tool to lift the motherboard out of the device.

⚠ These images use a metal spudger, which has the potential to damage the device. Use a plastic opening tool or standard spudger instead.

Step 13 — Rear Facing Camera



- Use a plastic opening tool to remove the camera, which is attached with adhesive to the front of the tablet.

 These images use a metal spudger, which has the potential to damage the device. Use a plastic opening tool or standard spudger instead.

To reassemble your device, follow these instructions in reverse order.