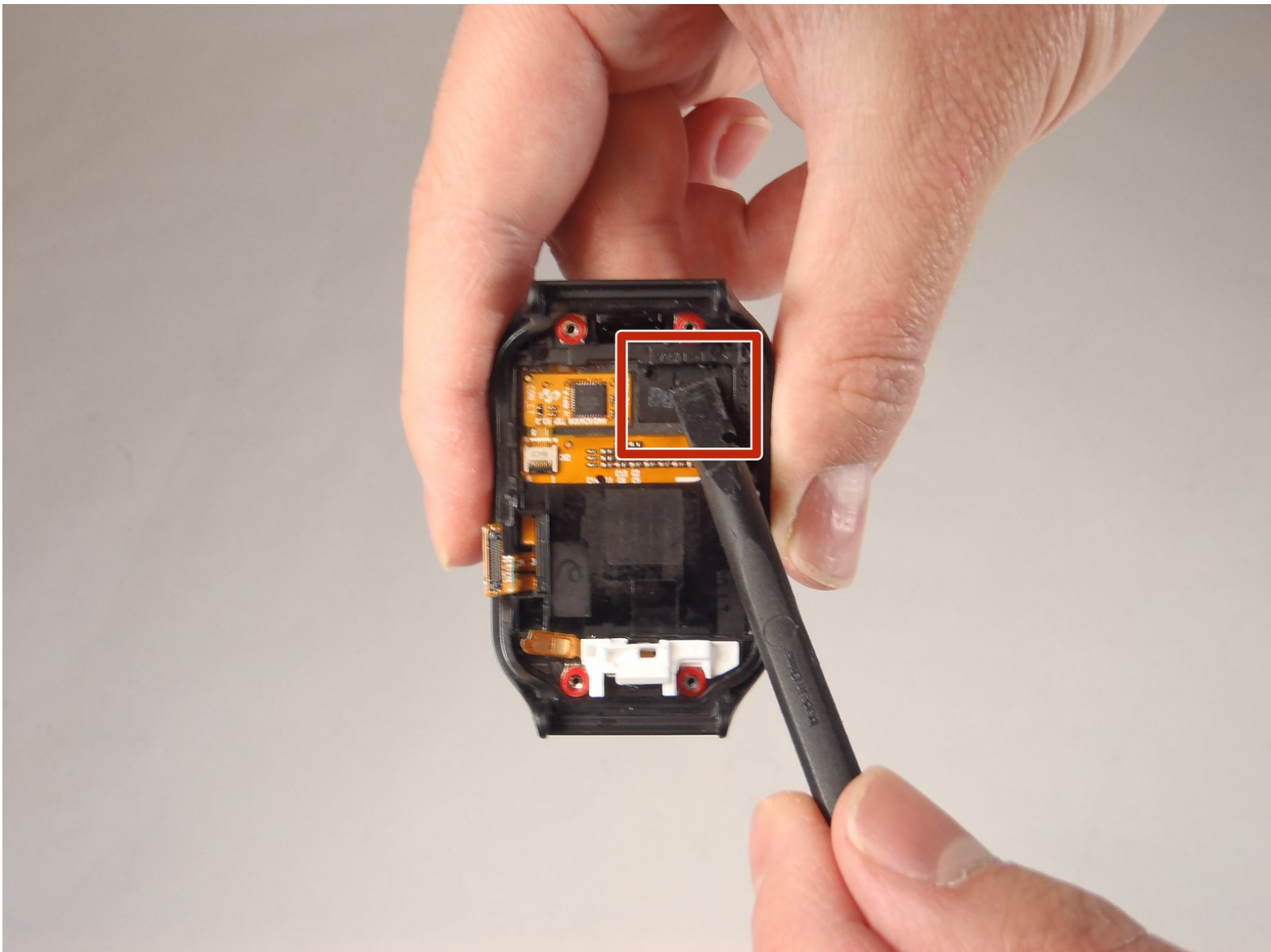




# Samsung Gear 2 Neo Display Replacement

For replacing the Display of a Samsung Gear 2 Neo please follow these instructions.

Written By: Victor Yore



## INTRODUCTION

If your display is failing, has distorted color problems, or is cracked, and you'd like to replace it then follow these step by step instructions. This requires close attention of the display and can be somewhat difficult with a rating of 5 out of 10 but should only take about 15 minutes or less if instructions are followed properly. Be careful because it's possible to damage the case, and display.



### TOOLS:

- [T5 Torx Screwdriver](#) (1)
- [Spudger](#) (1)
- [iFixit Opening Tools](#) (1)
- [Tweezers](#) (1)



### PARTS:

- [Samsung Gear 2 Neo Screen](#) (1)

## Step 1 — Battery



- Remove the wristband by sliding the metal pins located on both sides of the wrist band, and pulling the wristband off.

## Step 2



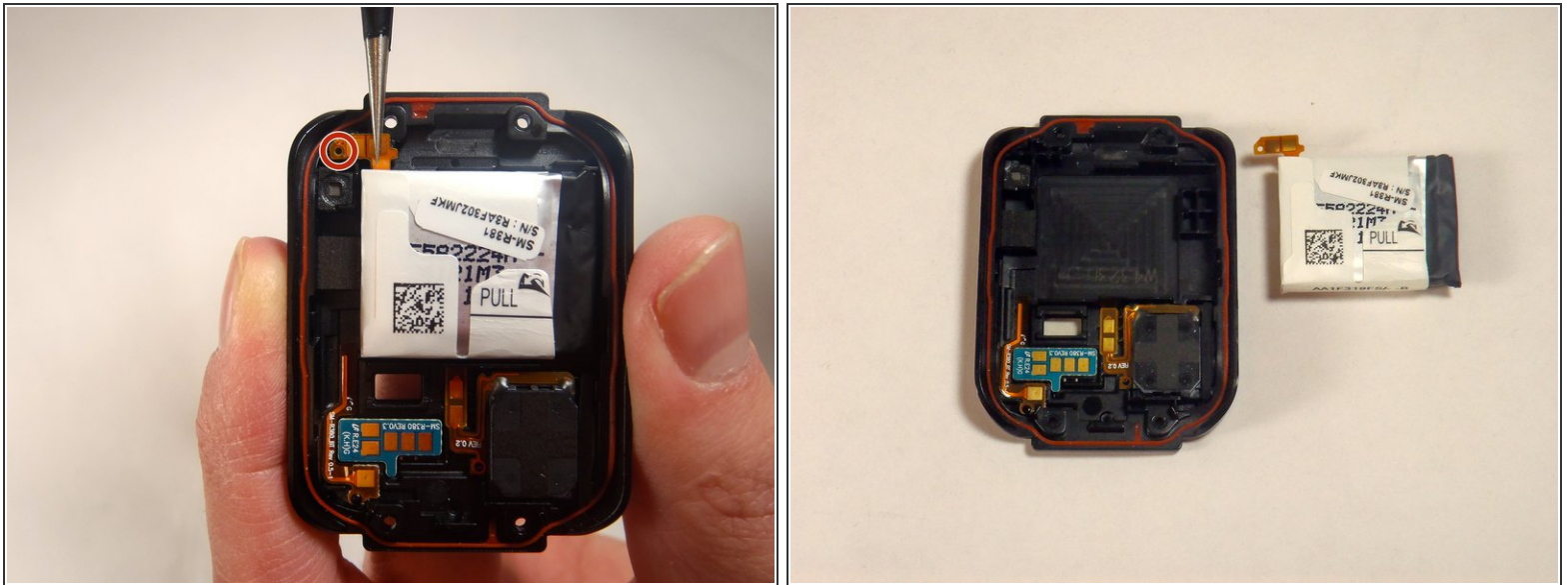
- Use a T5 Torx Screwdriver to remove the 4 (0.4 mm) screws located on the back of the watch.

## Step 3



- Slide the opening tool in between the two halves of the case and slide along the edge of the watch while gently prying the back cover away from the face of the watch.

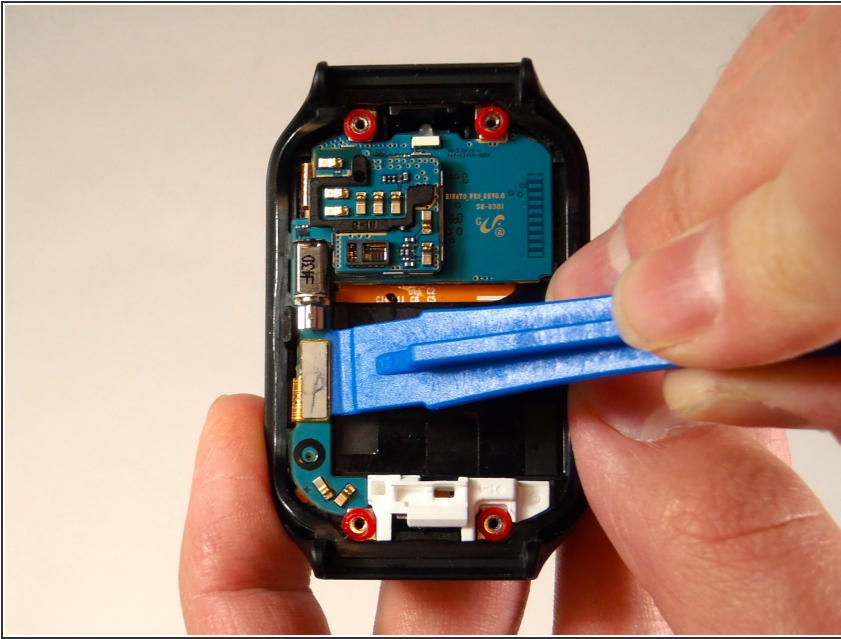
## Step 4



- Use a pair of tweezers to peel the battery ribbon cable off of the back cover.
  - ⚠ Avoid damaging the gold terminals on the ribbon cable.
- ☑ When reassembling, make sure that the yellow strip snaps back on to the black pin.
  - The pin is located, and marked on the picture.
- Pull up on the tab that says, “Pull”, the battery will lift straight out.

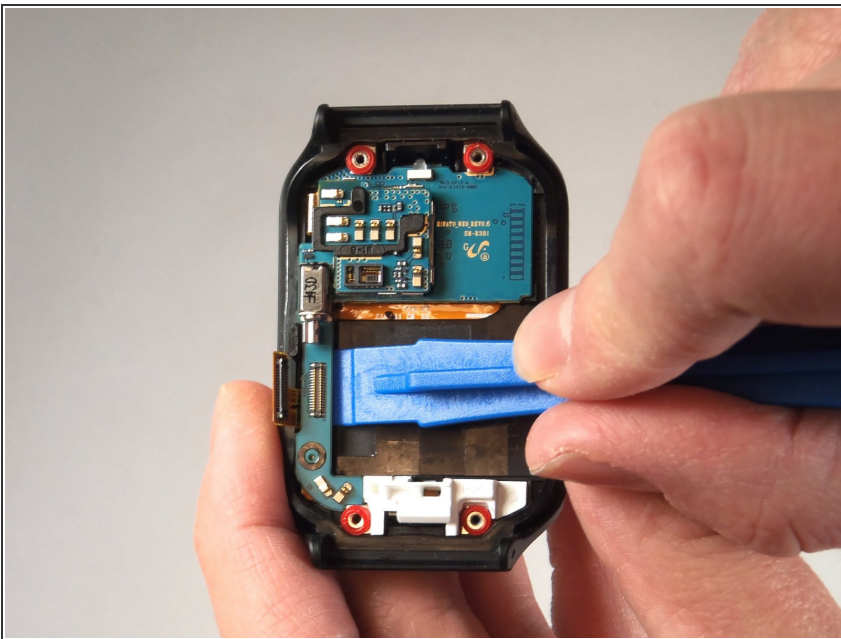


## Step 5 — Motherboard



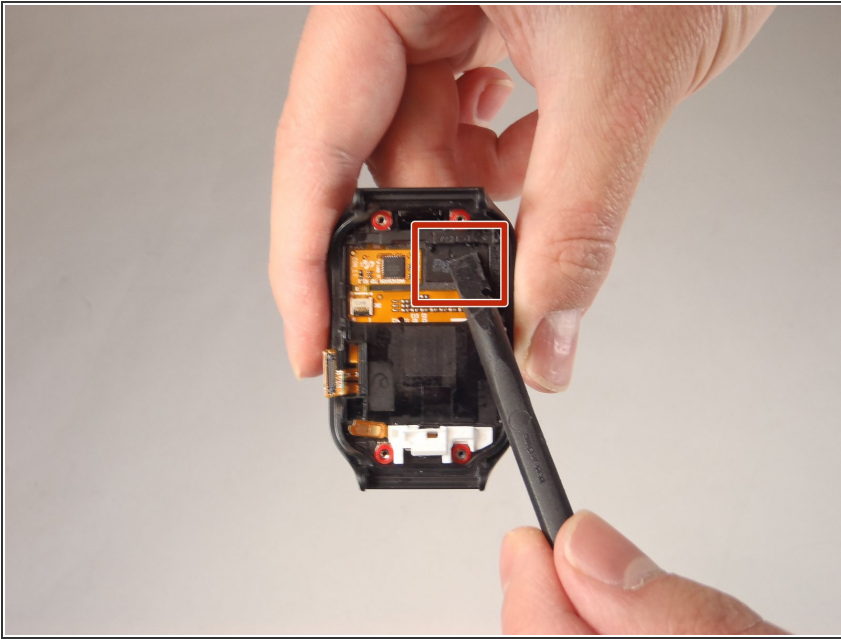
- Using the plastic opening tool, pull up on the flex connector. It will come off the motherboard, but will stay attached to the cover like a hinge.

## Step 6



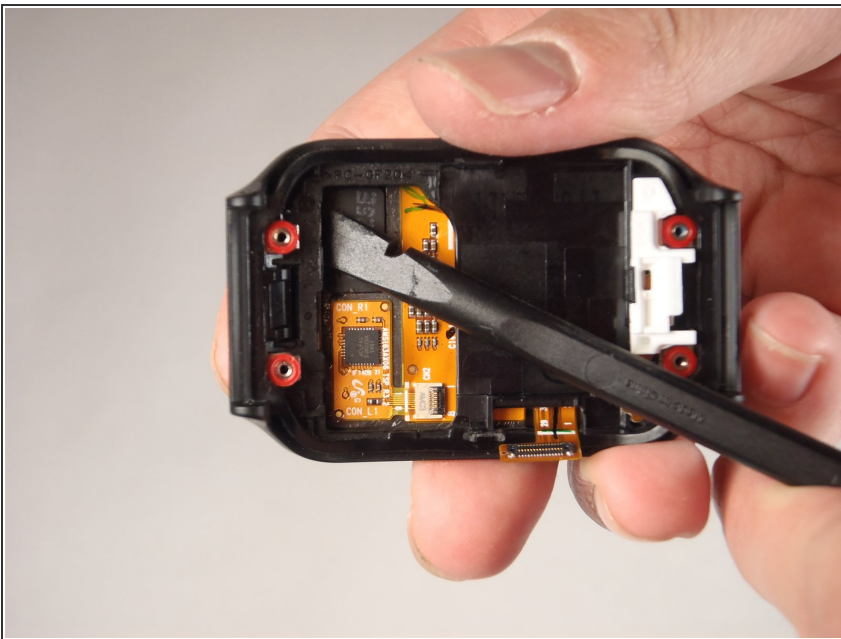
- ⚠ It is recommended to use antistatic wrist wrap whenever removing the motherboard.
- Place the plastic opening tool underneath the motherboard at this location. Gently pry the motherboard away from the front cover. It should pop off and be free from the cover.
- ⓘ Attached to the motherboard is the infrared LED Light. To replace the IR LED, you may need to replace the entire motherboard.

## Step 7 — Display



- Use the spudger and apply pressure to the back of the AMOLED display.
- ⚠ Make sure to stay within the area marked to avoid damaging the device.

## Step 8



- Once part of the display begins detaching from the front cover, place the spudger in between the display and the front cover.

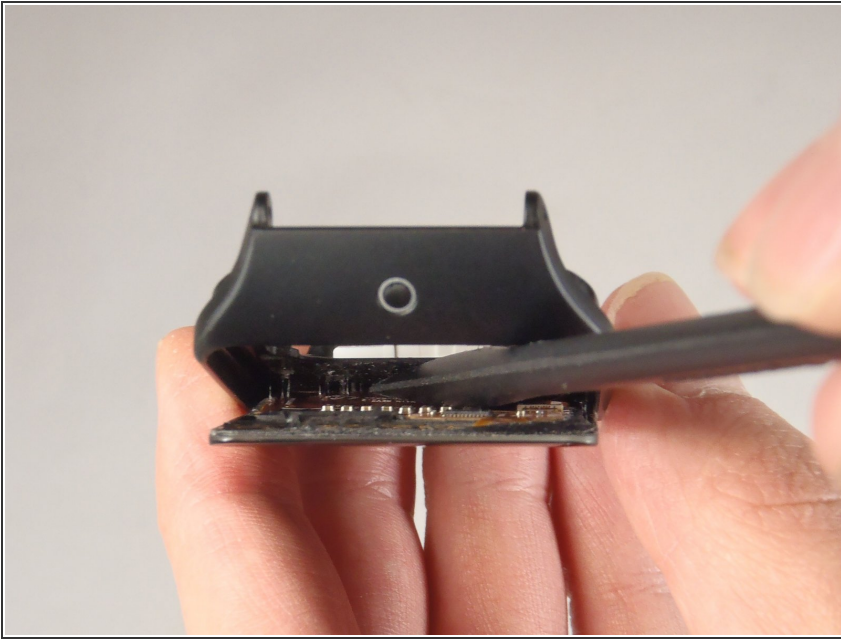
## Step 9



- Use the spudger to scrape off the adhesive located on the bottom side of the display, attaching the display to the front cover.
- ⚠ Be careful when doing this step as it could potentially break the display and/or the case if not followed properly.



## Step 10



- After the adhesive has been removed, apply pressure with the spudger to the back of the AMOLED display; the display should pop right out.

To reassemble your device, follow these instructions in reverse order.