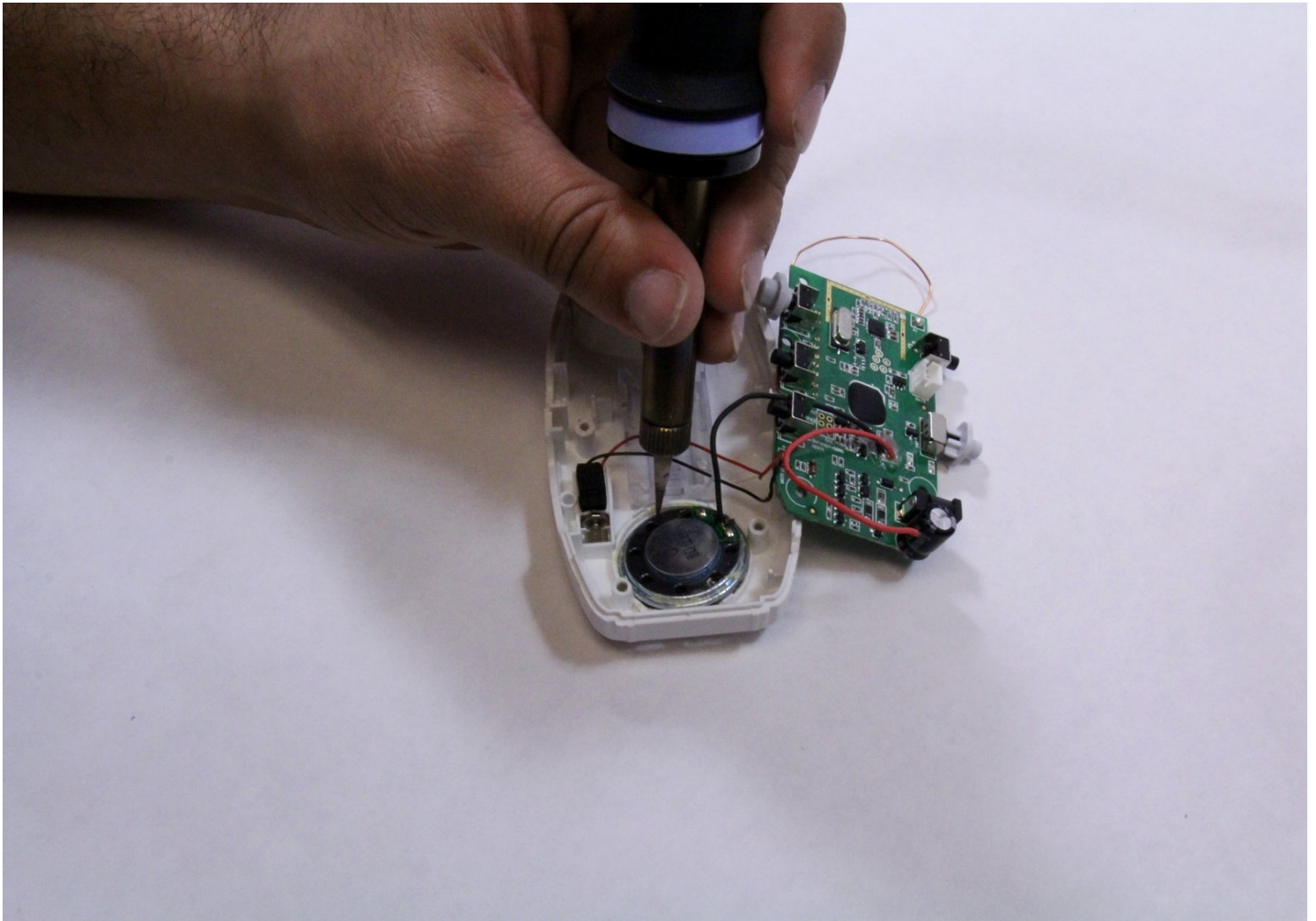




Graco Secure Coverage Speaker Replacement on Parent Unit

Use this guide to replace the speaker on your...

Written By: Ahmed Elshaer



INTRODUCTION

Use this guide to replace the speaker on your Graco Secure Coverage Digital Baby Monitor for parent unit.

The speaker replacement includes the speaker and battery replacement.

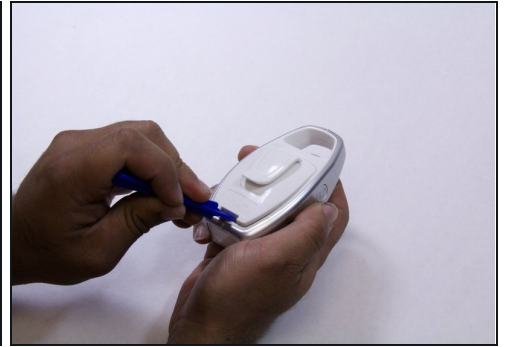
TOOLS:

[iFixit Opening Tool](#) (1)

[Soldering Iron 60w Hakko 503F](#) (1)

[Phillips #1 Screwdriver](#) (1)

Step 1 — Parent Unit Battery



- Using plastic opening tool, pry and remove the battery lid.

Step 2



- Remove the battery by holding the device with one hand and pulling the battery out with other hand carefully.

⚠ Make sure that you disconnect the battery's wire before you remove the battery.

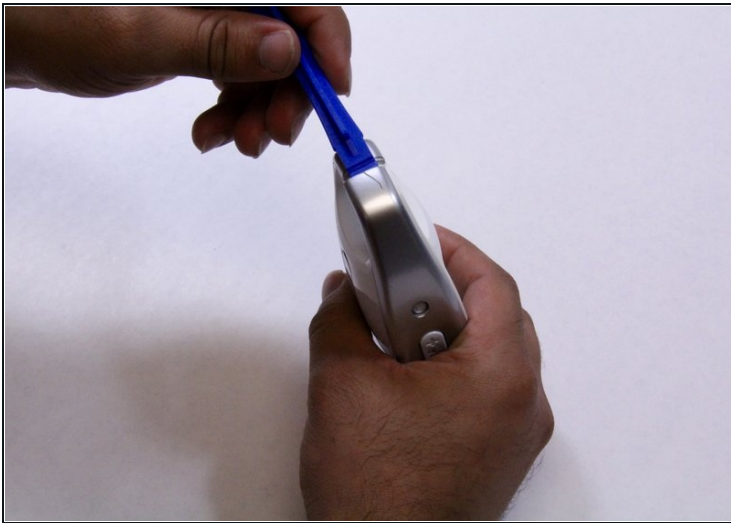
Step 3 — Parent Unit Speaker



- There are two screws on the rare case of the device. For the one shown in red marker requires either an extended screwdriver or putting on a little pressure on a regular screwdriver.
- Remove the two 9mm Phillips #1 screws from the rare case of the device.

⚠ If you cannot remove the screw with low pressure, do not use high pressure to remove it. It may cause a damage on the device case. Use an extended screwdriver instead.

Step 4

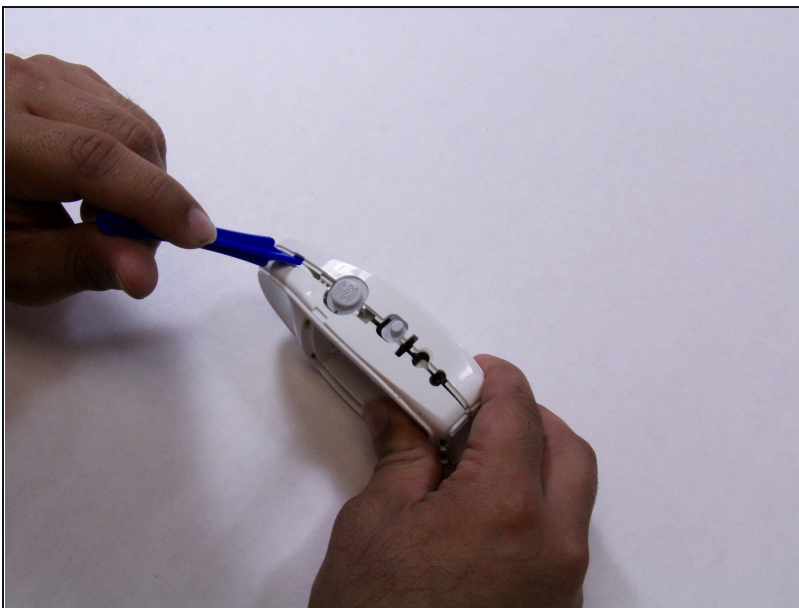


- Using opening plastic tool, pry the two grey cases from both sides of the device.

⚠ Take your time and apply constant force to avoid breaking or damaging any other plastic parts.

- While pry off the grey cases, hold the device with your other hand to remove the cases.

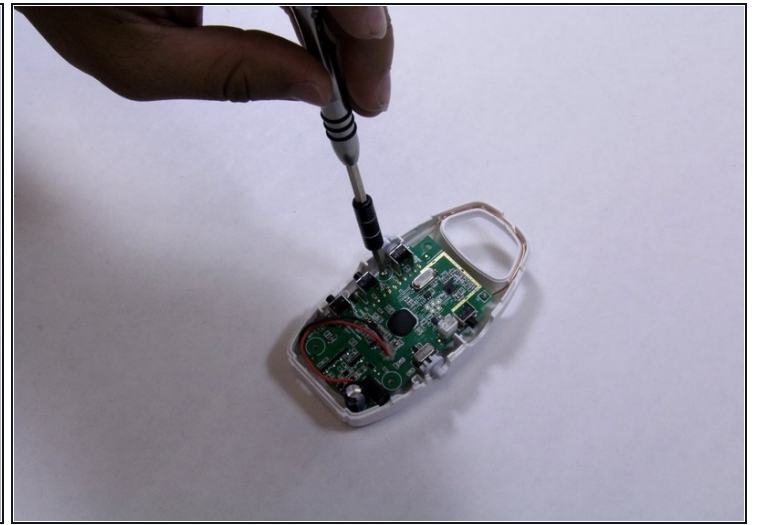
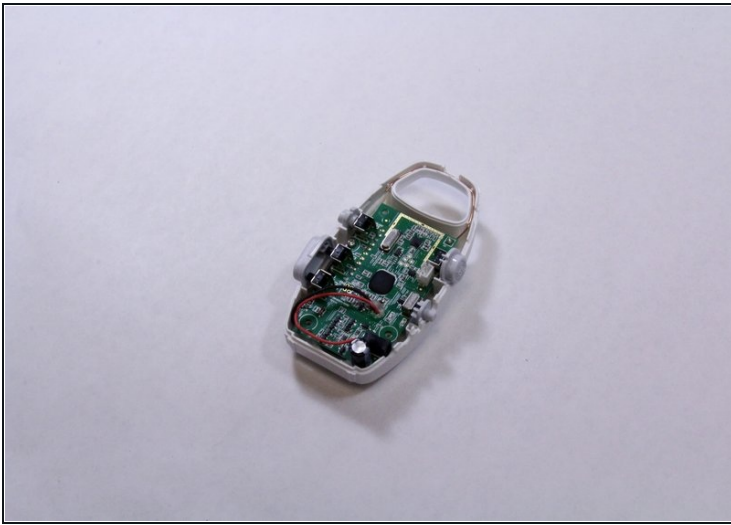
Step 5



- Pry the edges of the device to separate the front case away from the rear case.
- While prying the edges, hold the device with one hand to pull out each case a part.

⚠ Make sure you use a constant force, and the pushbuttons are pried off completely.

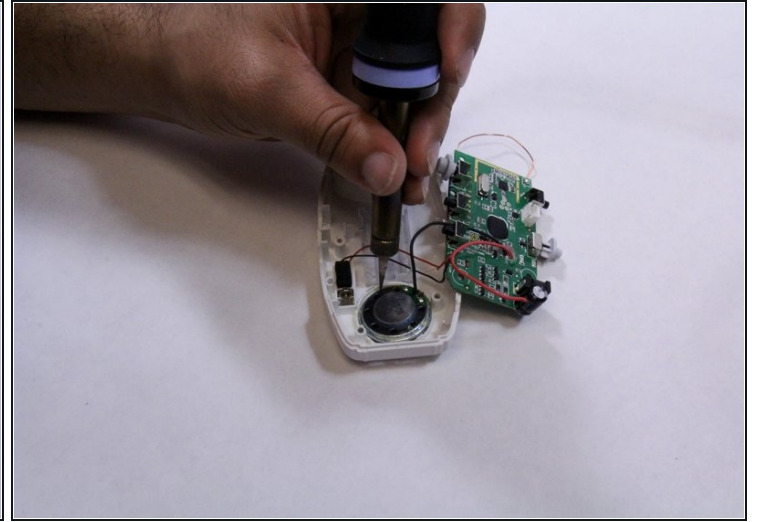
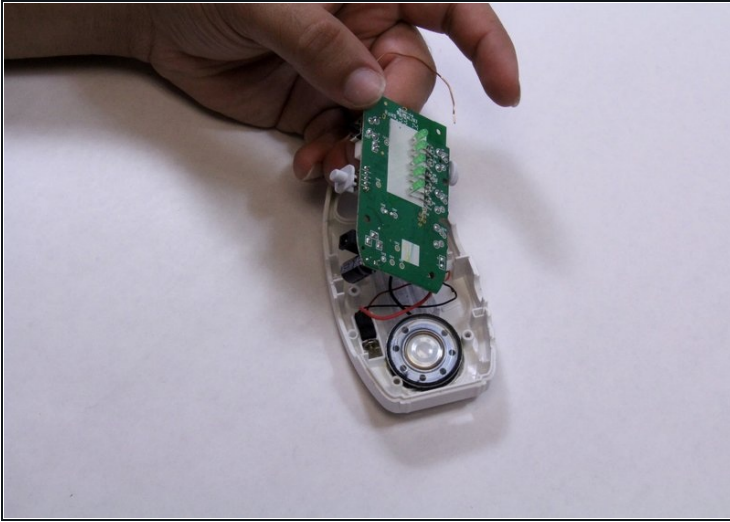
Step 6



- Remove the 7mm Phillips #1 screw from the mother board.
- Place the screw in a secure place.

⚠ Pull out the mother board away from the case carefully.

Step 7



- Pick up the motherboard.
- Solder off the speaker from the device's case.
- Solder off the speaker from the mother board.

⚠ There are many pins attached to the mother board, make sure you solder off the proper pins that attached to the speaker wires.

- Replace the speaker.

To reassemble your device, follow these instructions in reverse order.