



# Canon PowerShot SX520 HS Back Face Replacement

This guide will teach you how to remove the back cover of the camera.

Written By: Kyle Crowley



---

## INTRODUCTION

Did you drop your camera and crack the cover? This guide will give you step-by-step instructions on how to remove and replace the back face.

---



### TOOLS:

- [Phillips #000 Screwdriver](#) (1)
-

## Step 1 — Battery



- Using your fingers, slide the battery compartment door to the right until it unlocks.

## Step 2



- Rotate the door along hinges to open.
- Take out the battery with your fingers.



### Step 3 — Back Face



- Remove 2-3.4 mm screws that secure the back panel using a Phillips #000 screwdriver.
- Remove 4-4 mm screws on the left and right sides of the camera using a Phillips #000 screwdriver.

### Step 4



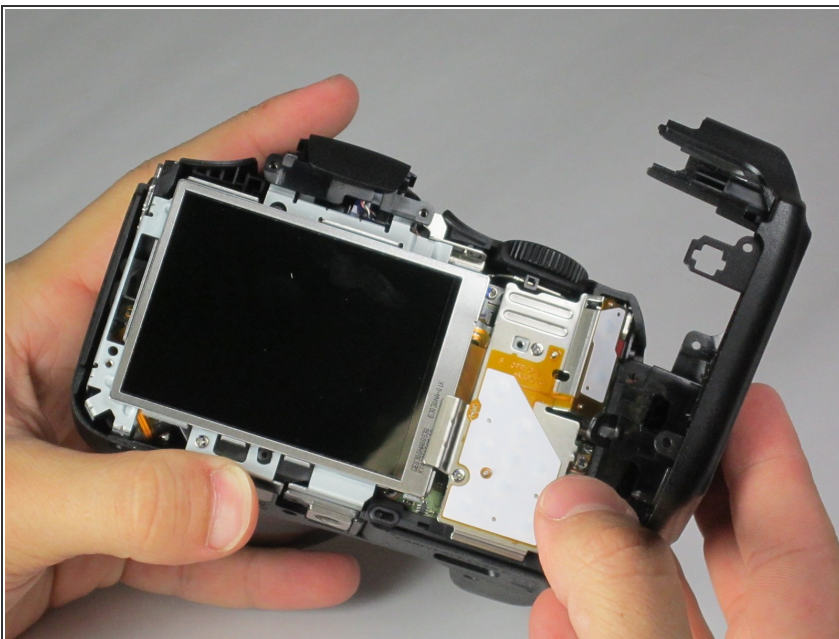
- Remove 2-4 mm screws that secure the bottom of the camera using a Phillips #000 screwdriver.

## Step 5



- Pull back the rubber facing to access the A/V and HDMI output compartment.
- Remove 1-3.4mm screw inside the compartment using a Phillips #000 screwdriver.

## Step 6



- Once all screws are removed, pull the back facing off with your fingers.

To reassemble your device, follow these instructions in reverse order.