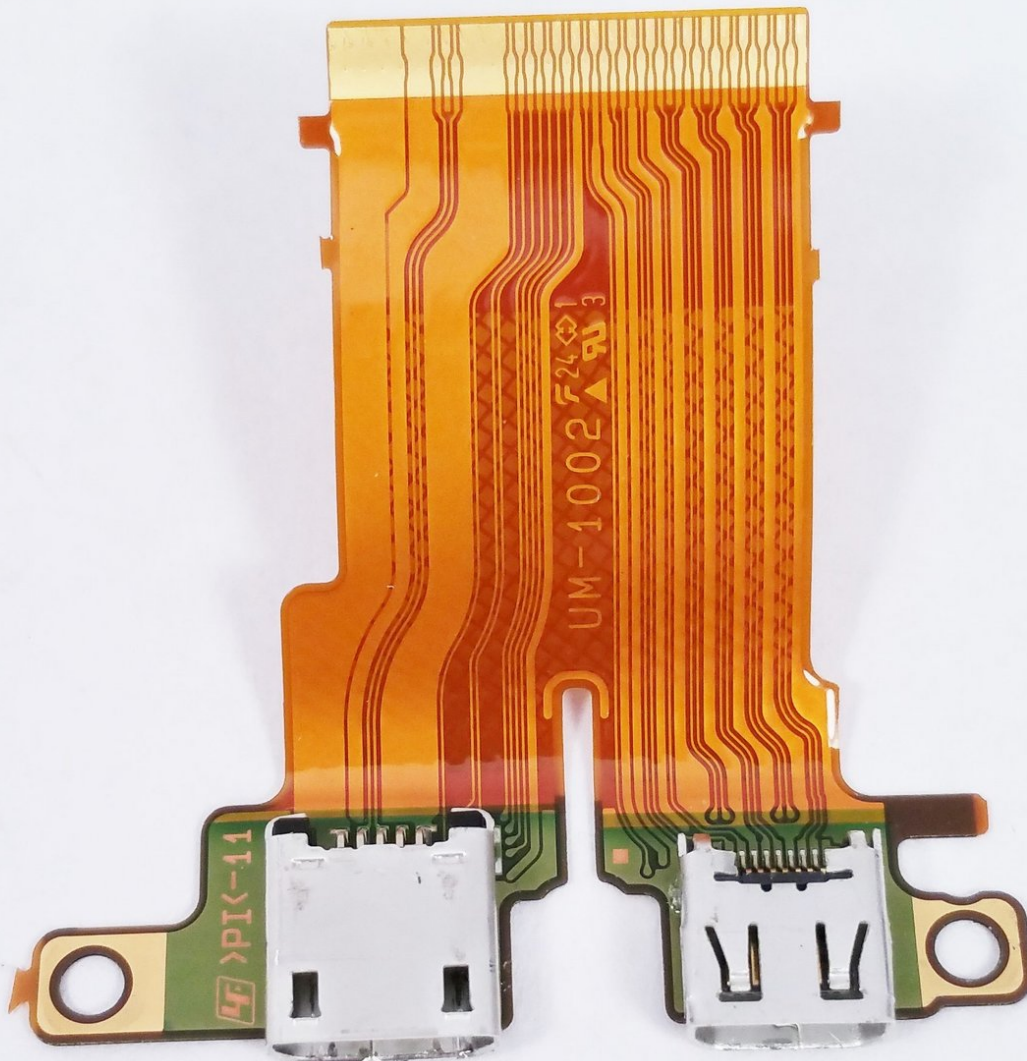




Sony Cyber-shot DSC-HX300 HDMI/USB port Replacement

This guide will show how to replace the HDMI port.

Written By: Elizabeth Surface



INTRODUCTION

If your computer does not register that the Sony Cyber-shot DSC-HX300 is plugged in then the HDMI/USB ports may need to be replaced.



TOOLS:

- [Small Phillips Head Screwdriver](#) (1)
 - [Magnetic Project Mat](#) (1)
 - [iFixit Opening Tools](#) (1)
-

Step 1 — Battery



- ⚠ Make sure the camera is powered off
- Turn the camera upside down. This is a view of the bottom of the camera.

Step 2



- Push battery cover away from the camera.

Step 3



- Push the blue tab that secures the battery. The battery will then spring out.

Step 4



- Remove the battery.

Step 5 — Motherboard



 Make sure to remove the battery before disassembly to prevent electrocution.

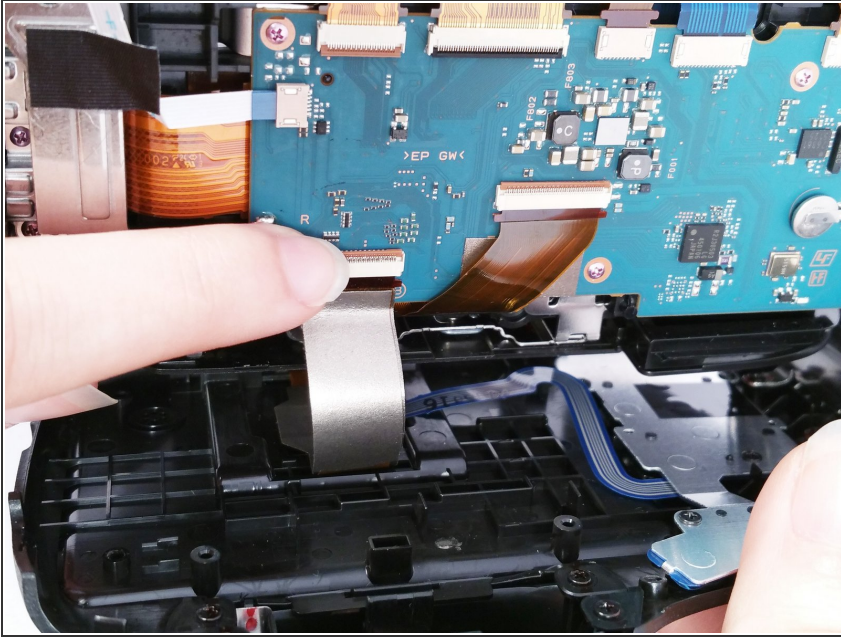
- Remove the 3 (4 cm) Phillips head screws located on the back of the camera.
- Remove the 2 (4 cm) Phillips head screws on the right side of the camera.
- Turn the camera upside down to remove the remaining the 3 (4 cm) Phillips head screws holding the plastic camera housing together.

Step 6



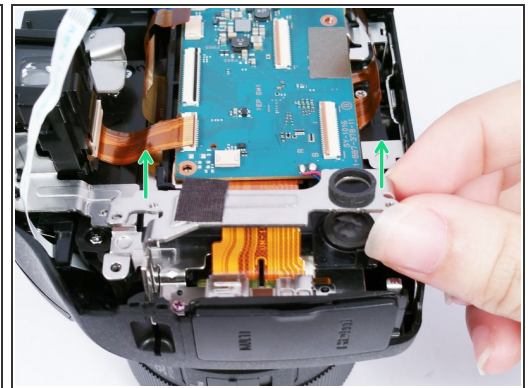
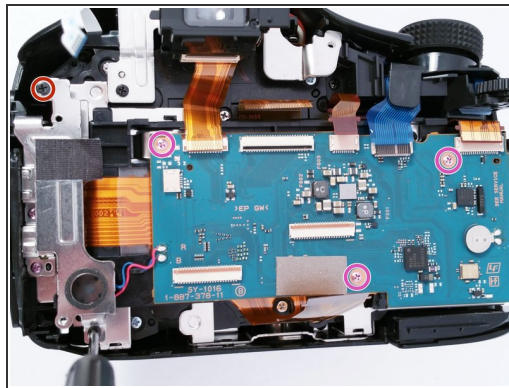
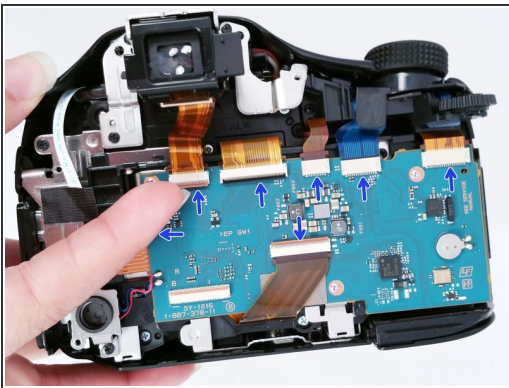
- Using a plastic opening tool, separate the plastic camera housing.

Step 7



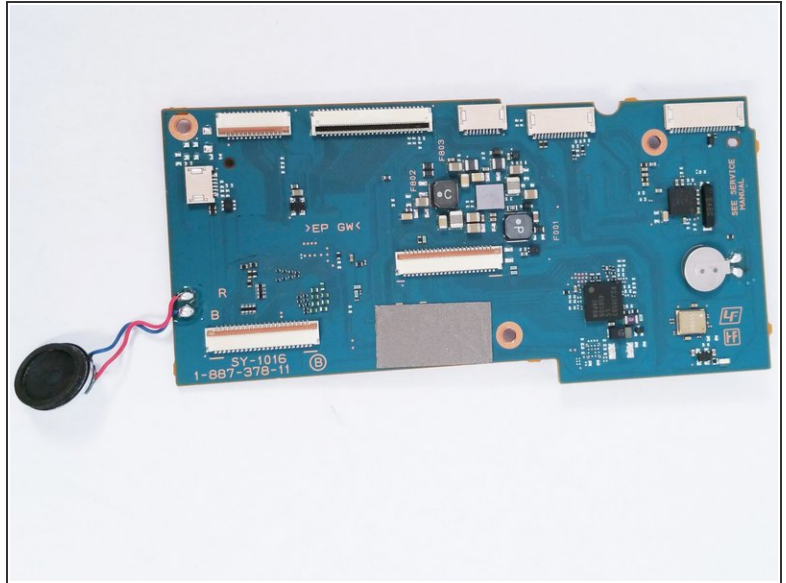
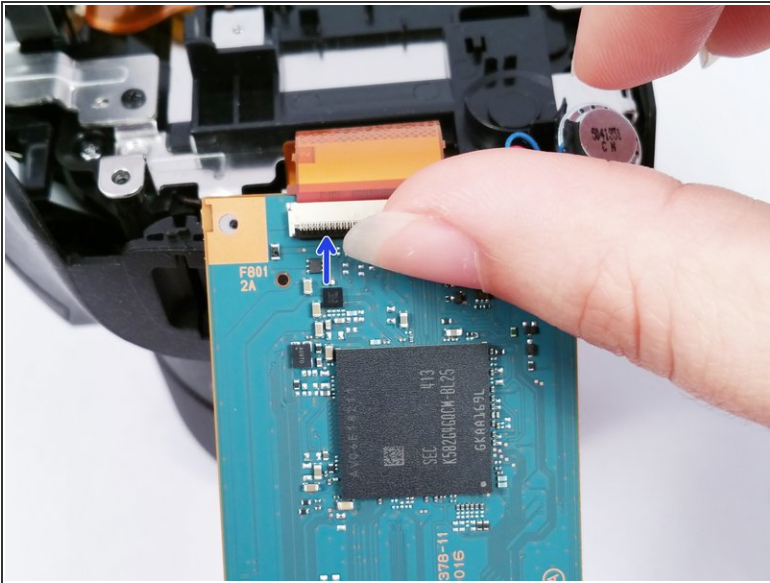
- Disconnect the ribbon wire attaching the screen to the camera.

Step 8



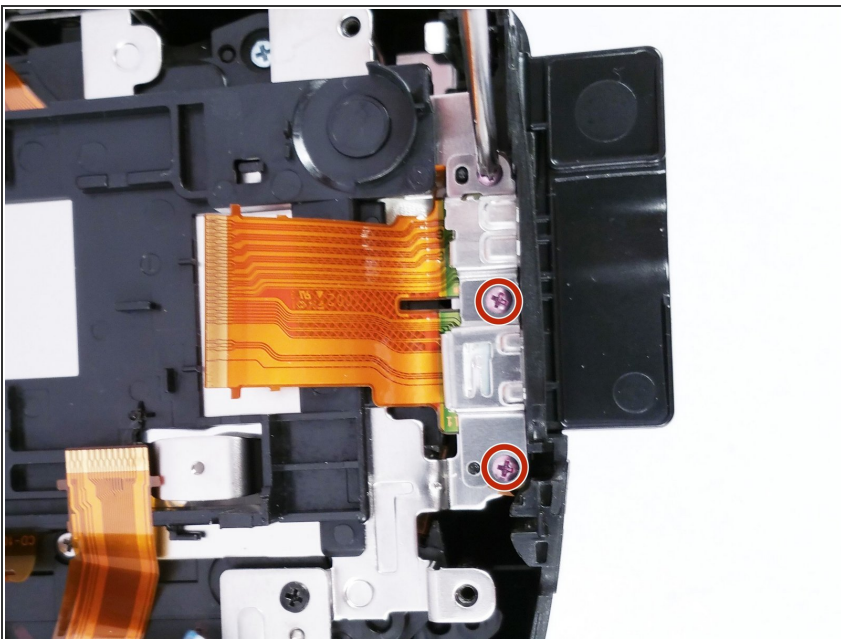
- Carefully remove the 7 ribbon wires connected to the mother board.
- Remove the 2 (5 cm) Phillips head screws on the speaker mounting bracket.
- Remove the 3 (4 cm) Phillips head screws that secure the motherboard to the camera.
- Lift up on the speaker mounting bracket to remove it.

Step 9



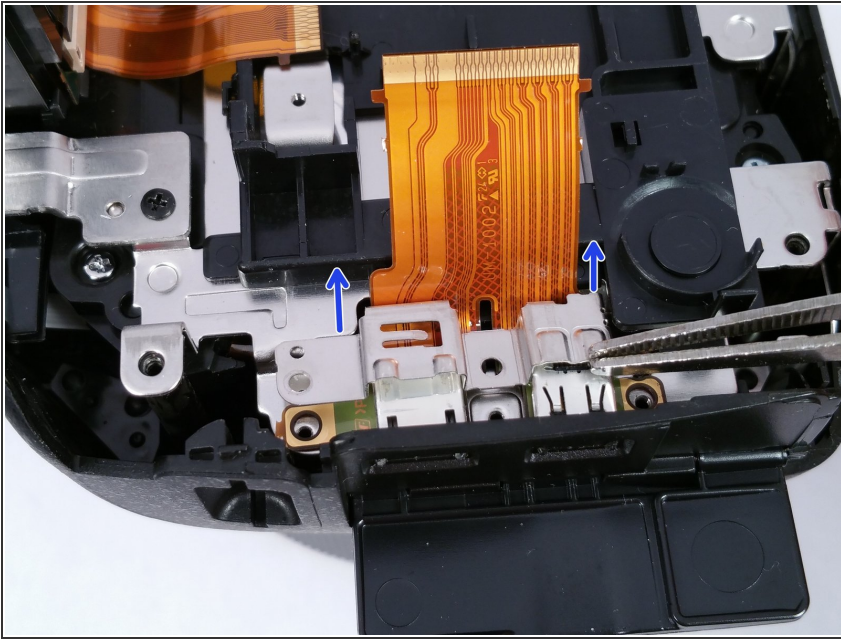
- Carefully disconnect the ribbon wire connecting the HDMI port to the Motherboard.
- Once the Motherboard is removed the replacement can be installed.

Step 10 — HDMI/USB port



- Remove the 3 (4 cm) Phillips head screws securing a mounting bracket over the HDMI/USB Port.

Step 11



- Lift up on the mounting bracket to remove the HDMI/USB Port from the camera.

Step 12



- Once the HDMI/USB Port is removed the replacement can be installed.

To reassemble your device, follow these instructions in reverse order.