



Insignia NS-HDRAD Rear Panel Replacement

This guide details removing the rear panel in order to access other components.

Written By: Joshua Miller



INTRODUCTION

The rear panel must be removed in order to repair or replace internal components. Using the metal tool helps in removal because the speaker is metal and a plastic tool would likely break with the force required to remove the panel.



TOOLS:

- [Phillips #1 Screwdriver](#) (1)
 - [Metal Spudger](#) (1)
 - [Small Needle Nose Pliers](#) (1)
-

Step 1 — Battery



- Be sure the radio is turned off by pressing the red power button.
- Or, if using the charger, remove the power cord.

Step 2



- Remove the panel on the back side of the radio by pressing the arrow in a downward motion.

Step 3



- Remove the batteries one-by-one by pulling from the positive terminal of the top left battery.
- ⓘ The battery's positive terminal is indicated by a "+" on the side.
- Remove the adjacent battery by simply pulling it out of the holder.
- Repeat for the bottom row of batteries.

Step 4 — Rear Panel



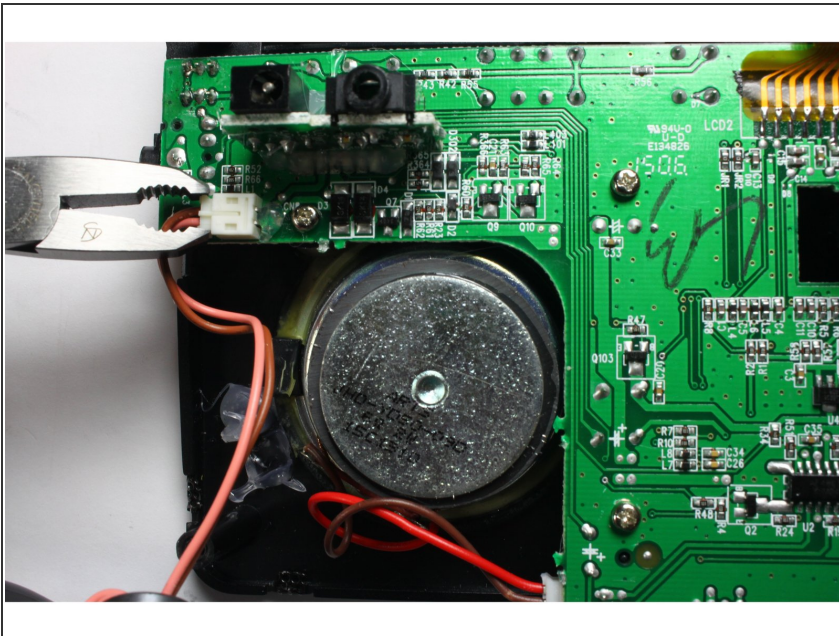
- Using the J1 Philip's head screwdriver, remove the 4 screws from the back side of the radio.
- ⓘ The 2 bottom screws are difficult to remove. Once unscrewed, either use a spudger to pull it out or knock on the front side of the radio to pop it out.

Step 5



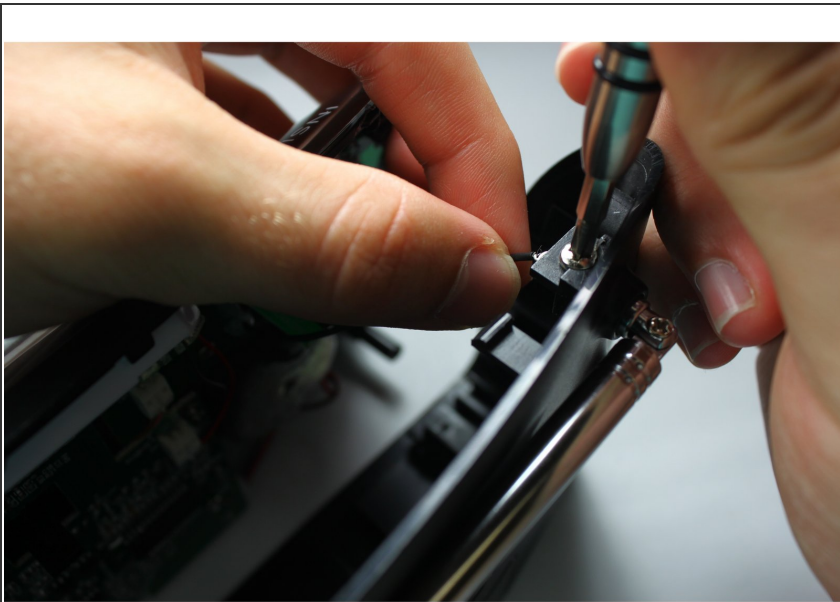
- Using the metal spudger, pry open the panel with the metal spudger. Work your way around the whole device.
- ⓘ The headphone jack is flush with the paneling so the panel must be moved away from the jack completely to remove.
- ☛ When reassembling, the ports don't fit into their respective holes in the back panel. Use the sharp metal end of the spudger and pull the ports to their slots.

Step 6



- Using the pliers, separate the wire connector above the left speaker.
- ⓘ If this is the first time removing the wire connector, there may be glue holding the wires flush against the panel. Remove this glue with a finger or the plastic spudger.
- ⓘ Using regular pliers or needle nose pliers are fine for this task. They are interchangeable.

Step 7



- Using the J1 Philip's head screwdriver, unscrew the bolt attaching the antenna to the back panel.

To reassemble your device, follow these instructions in reverse order.