



Plantronics Voyager Legend Earpiece Replacement

This guide will detail how to repair the earpiece, and in particular, the speaker on a Plantronics Voyager Legend. This will be useful for correcting volume problems and listening problems that may result in the Plantronics Voyager Legend.

Written By: Lewis Certain



INTRODUCTION

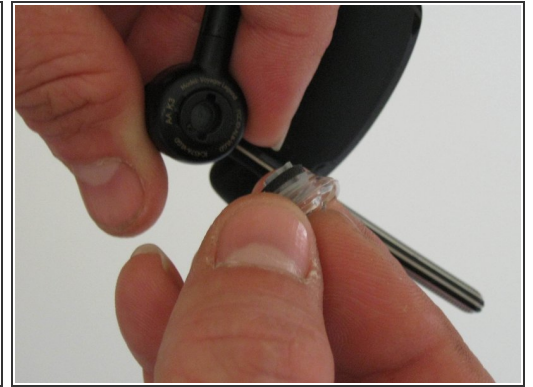
The earpiece unit on the Plantronics Voyager Legend consists of a soft-plastic earpiece, a plastic housing, a wire assembly, and the actual speaker unit. The assembly is held together by glue and snaps making disassembly difficult.



TOOLS:

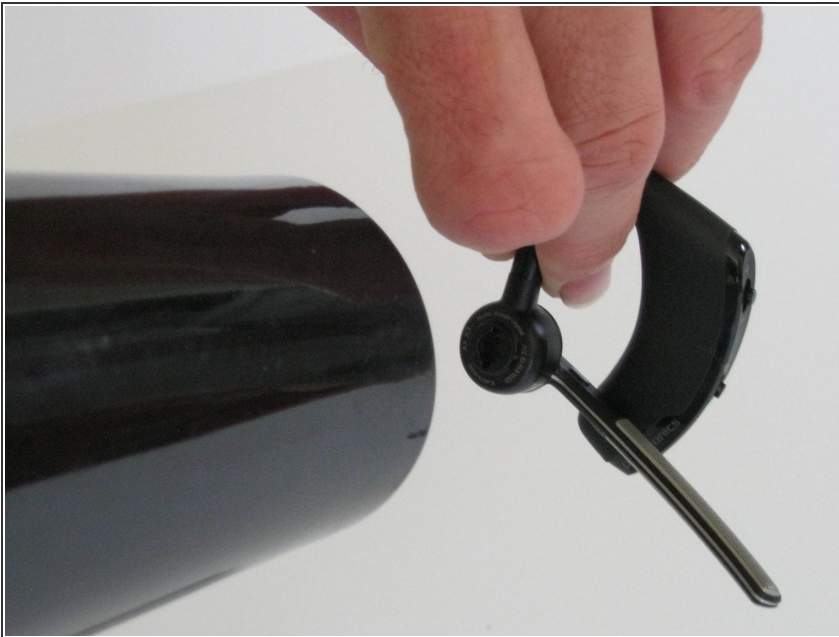
- [Heat Gun](#) (1)
 - [Metal Spudger Set](#) (1)
 - [Flush Wire Cutters](#) (1)
 - [Soldering Iron](#) (1)
-

Step 1 — Earpiece



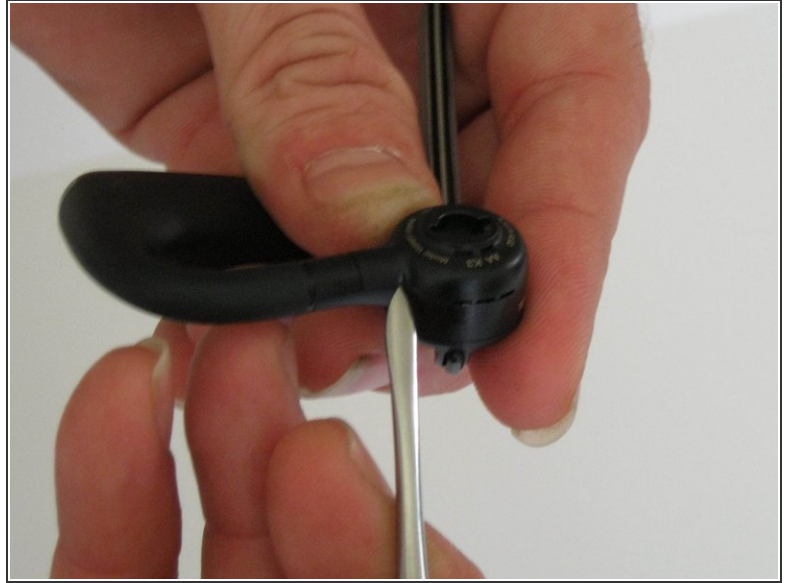
- **Remove the soft, plastic earpiece.**
- Depress the soft, plastic earpiece. While depressed, rotate the earpiece counterclockwise ninety degrees.
- Lift the soft, plastic earpiece out of its position.

Step 2



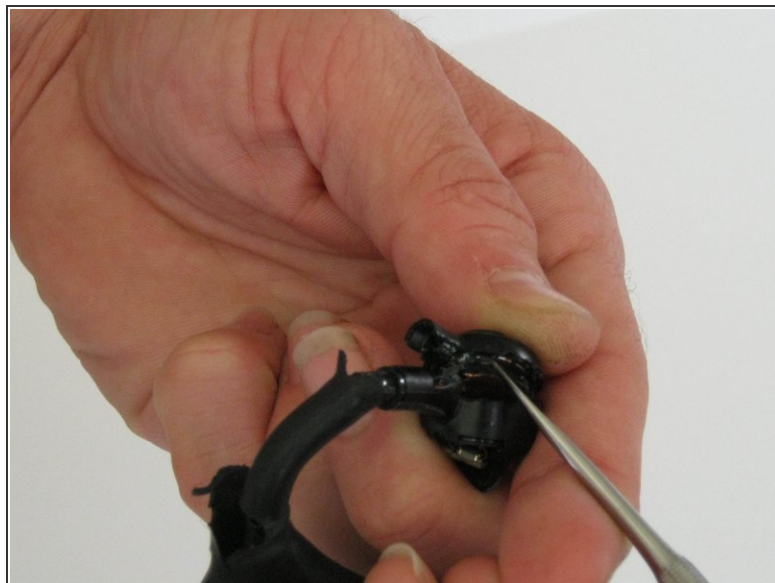
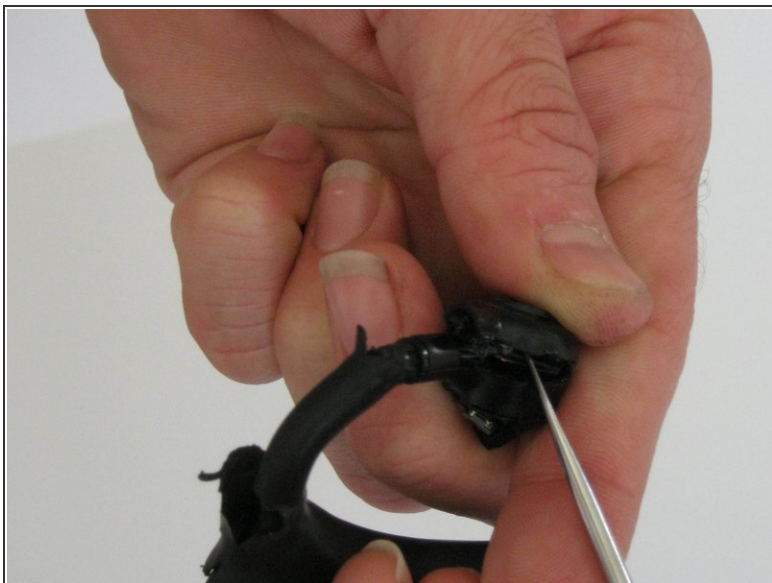
- Heat the earpiece assembly with a heat gun (a hair dryer will work if a heat gun is not available).
- ⓘ The heating softens the adhesive that holds the assembly together, and the assembly may need to be reheated to complete the dis-assembly process.

Step 3



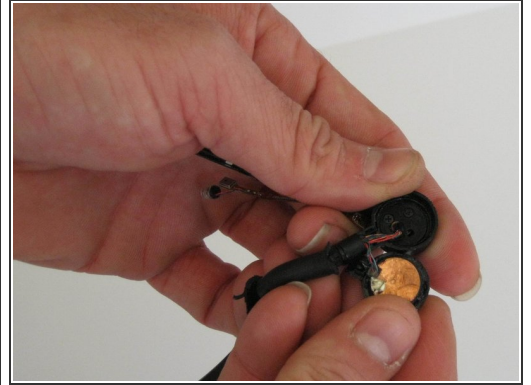
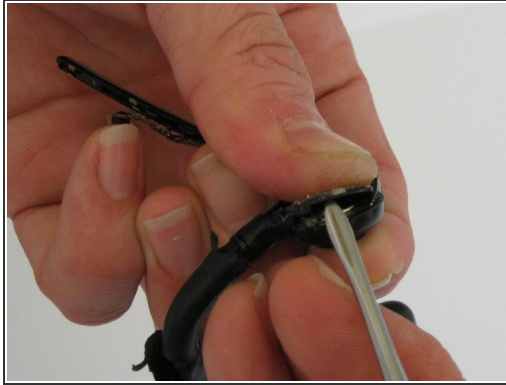
- The two snaps that combine with the adhesive to hold the assembly together are located in the neck of the earpiece unit.

Step 4



- **Remove the top half of the earpiece assembly.**
- Use the pointed end of a small, metal Spudger to loosen the two tabs that hold the earpiece assembly together.
- While glue is soft and snaps are loosened, remove the entire top half of the earpiece housing.

Step 5



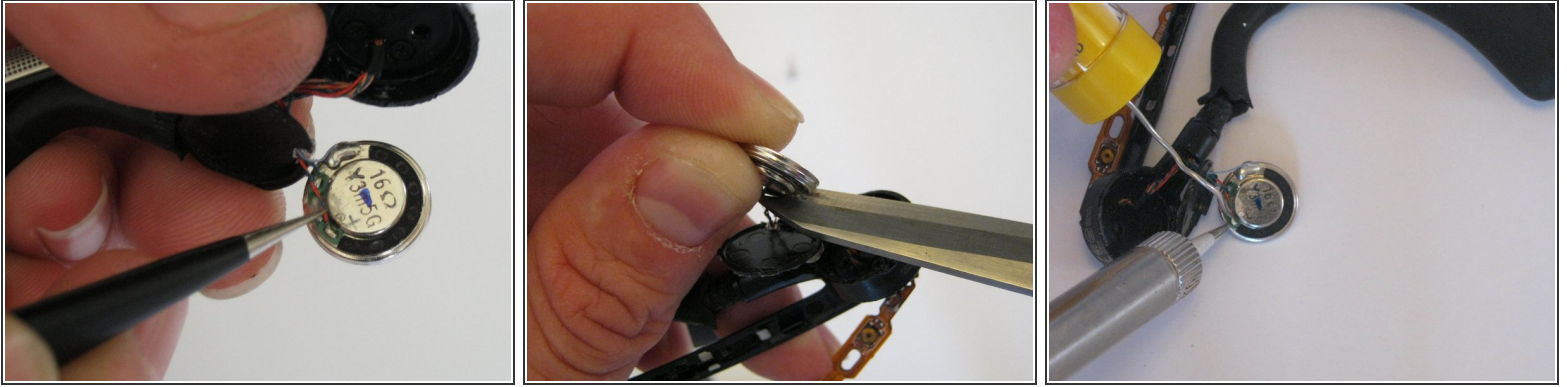
- **Remove the speaker housing.**
- With the copper backing plate displayed, use the pointed end of a small, metal Spudger to disassemble the speaker housing.
- Using the pointed end of the small, metal Spudger, lift the copper, backing plate away from the speaker unit.

Step 6



- Use Precision Tweezers to remove the protective screen from the front of the speaker unit.

Step 7



- **Remove the speaker unit and solder a new unit in place.**

- ⓘ When disconnecting leads, always disconnect as near as possible to the component being replaced, to allow room for reattachment.
- Locate the leads that connect to the back of the speaker unit.
- Disconnect the leads from the back of the speaker unit.
- Remove the speaker unit, and replace by soldering the leads back into their correct locations.
- ⓘ Refer to the iFixit [soldering guide](#) for assistance with soldering.

To reassemble your device, follow these instructions in reverse order.