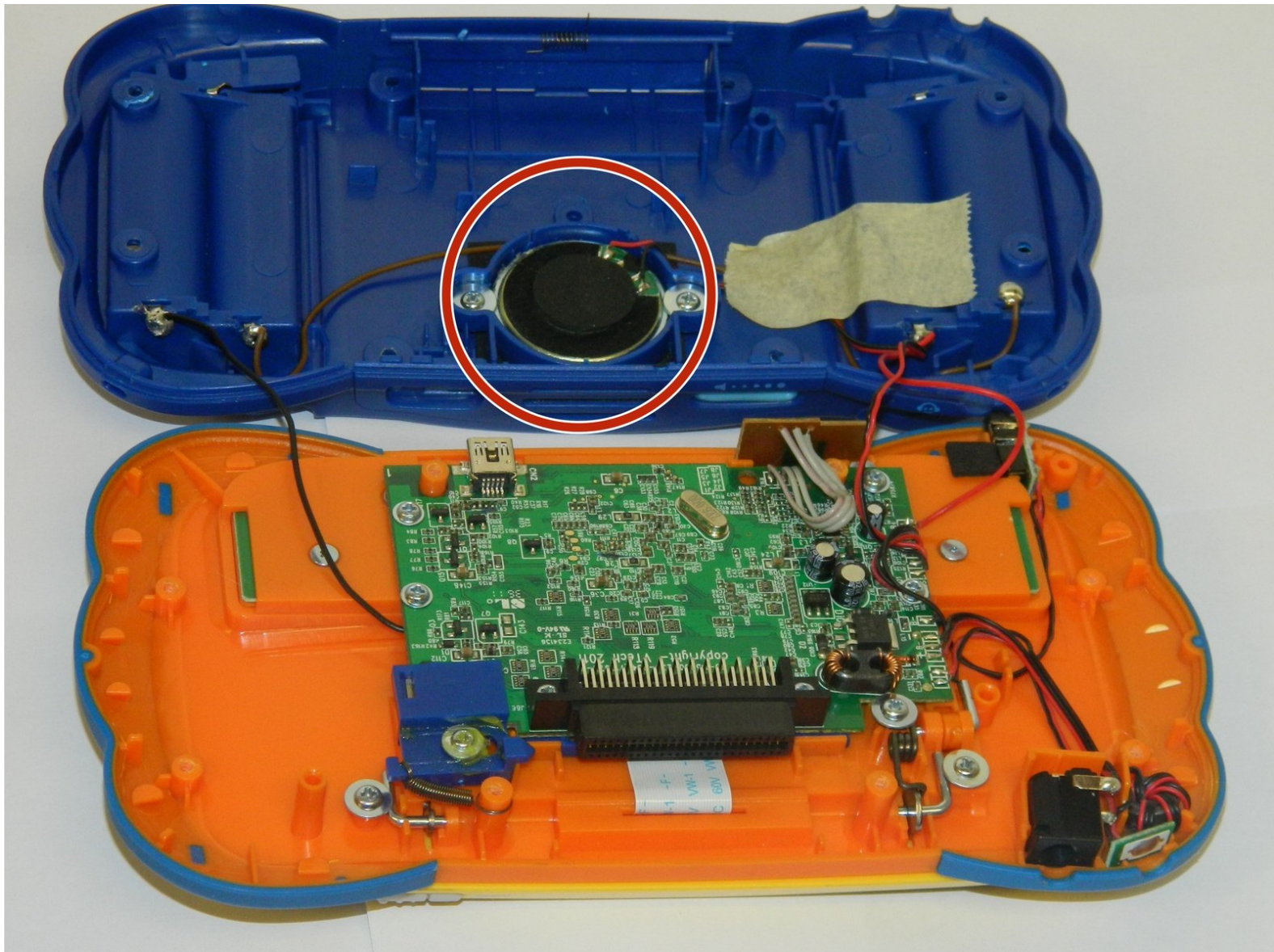




Replacing VTech MobiGo Touch Learning System Speaker

Replace the speaker in the VTech MobiGo Touch Learning System.

Written By: RBansil



INTRODUCTION

This page is for disassembling the speaker inside the device. Before following these steps, please refer to the Disassembling VTech MobiGo Touch Learning System Case Guide first.



TOOLS:

- [Spudger](#) (1)
 - [Screwdriver](#) (1)
 - [Soldering Iron](#) (1)
 - [Solder Vacuum](#) (1)
 - [Magnetic Project Mat](#) (1)
 - [Metal Spudger](#) (1)
 - [iFixit Opening Tools](#) (1)
-

Step 1 — Case



- Remove the battery covers and the four batteries.

Step 2



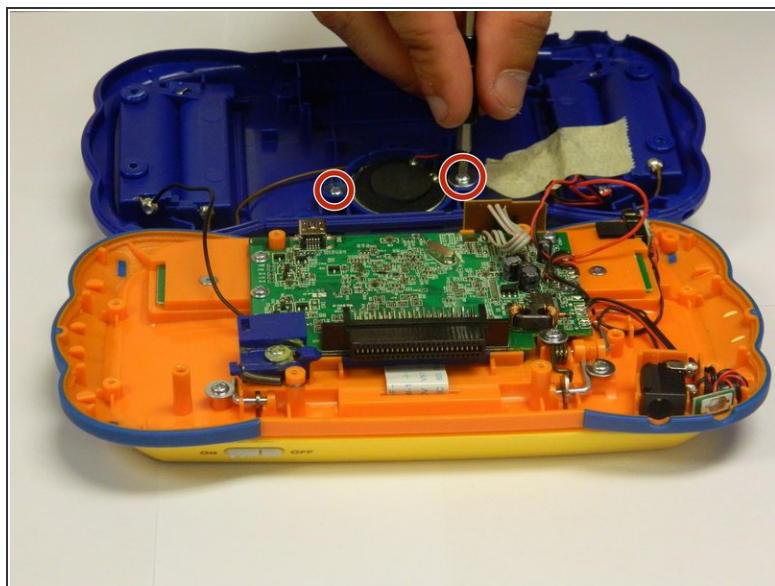
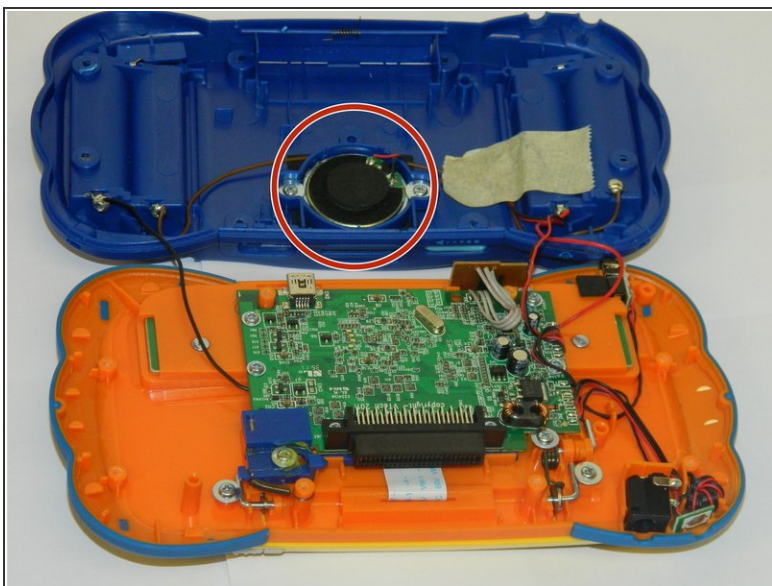
- Remove the four plastic caps with a metal spudger to expose the 6.0 mm Philips JIS #0 case screws.
- Remove the eight 6.0 mm JIS #0 case screws.

Step 3



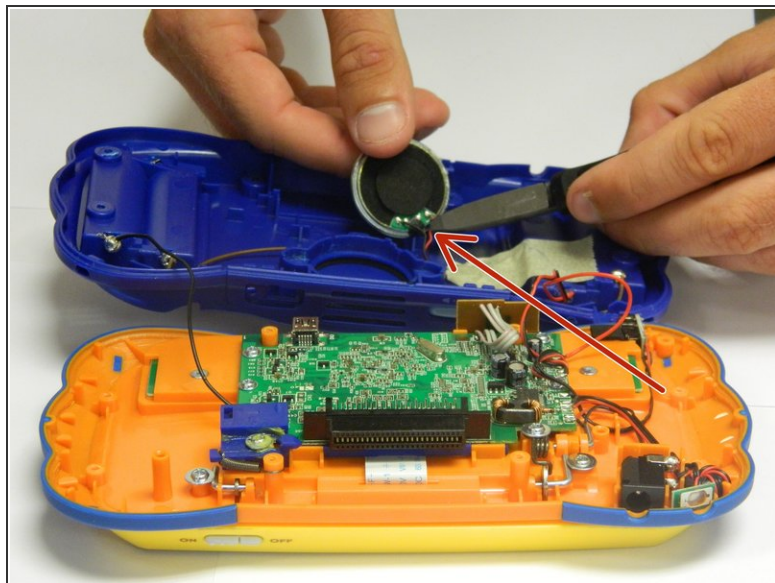
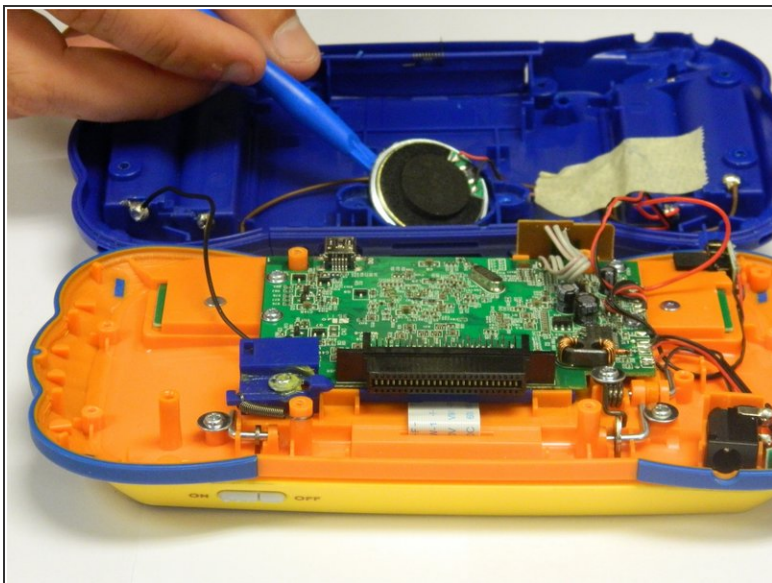
- Using a plastic opening tool, separate the two pieces of the case carefully.

Step 4 — Speaker



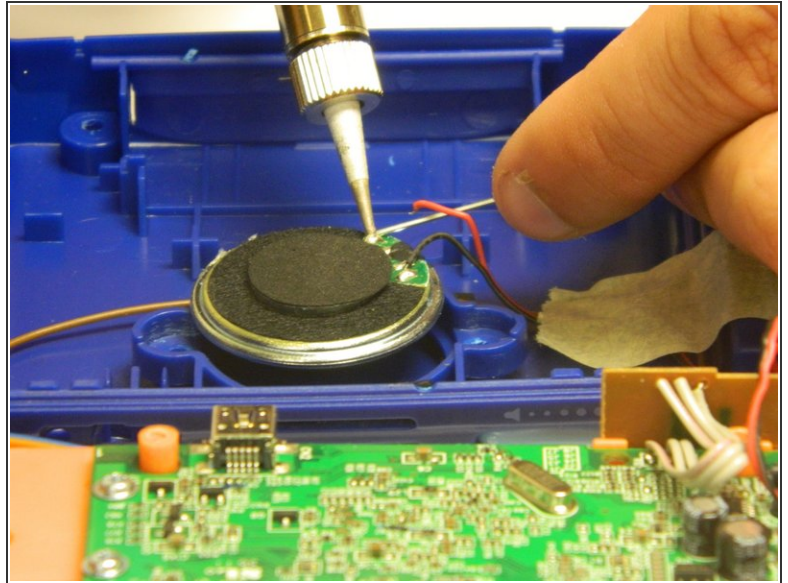
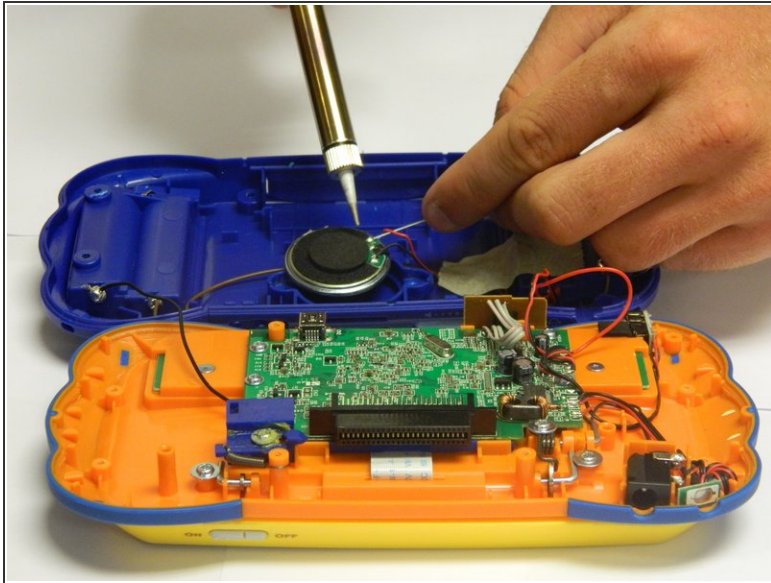
- The speaker will be attached to the back of the case.
 - Unscrew the two 6.0 mm Philips J0 screws.
- ⚠ Careful! The wires are still attached to the back of the case and to the speakers.

Step 5



- Lift the round speaker with a plastic opening tool.
- Remove the two wires connected to the speaker.
 - ⓘ You can use wire cutters or regular needle nose pliers to disconnect the wires from the speaker.
- Once the wires are disconnected, remove the speaker from the back of the case.

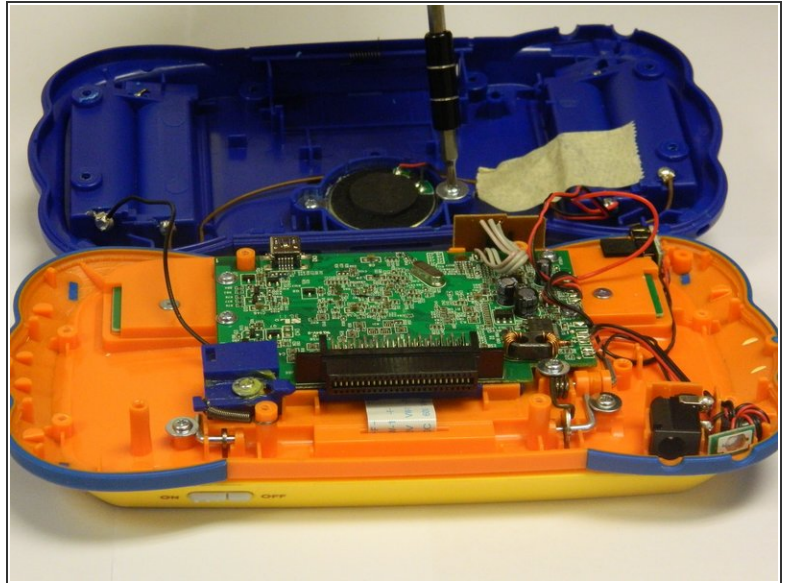
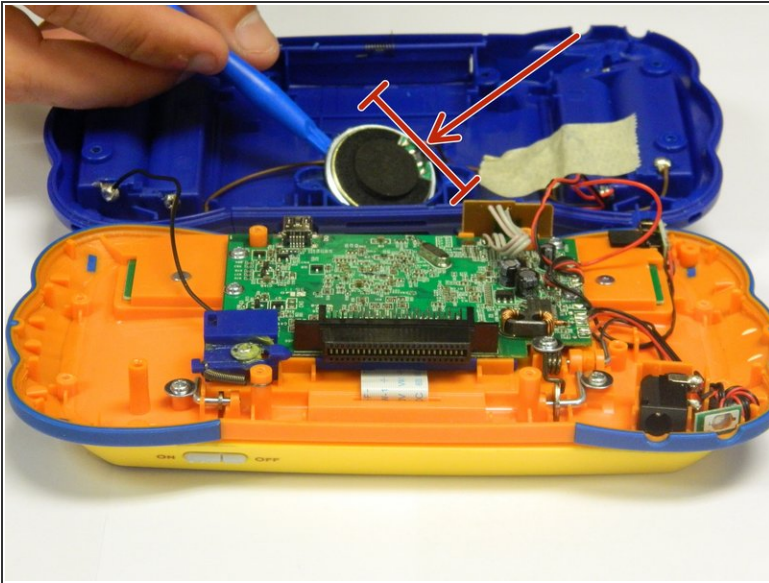
Step 6



- Solder the wires to the appropriate spots on the new speaker, making sure that both wires are properly connected.

⚠ The wires may be hot.

Step 7



- Insert the new speaker into the hatch located in the middle part of the panel using a plastic spudger.
 - ⓘ Make sure the speaker is the right size for the panel.
- Once the speaker is properly placed, screw in the two 6.0 mm Philips J0 screws.
 - ⚠ Do not over tighten the screws or the panel will break.

To reassemble your case, follow the case instructions in reverse order.