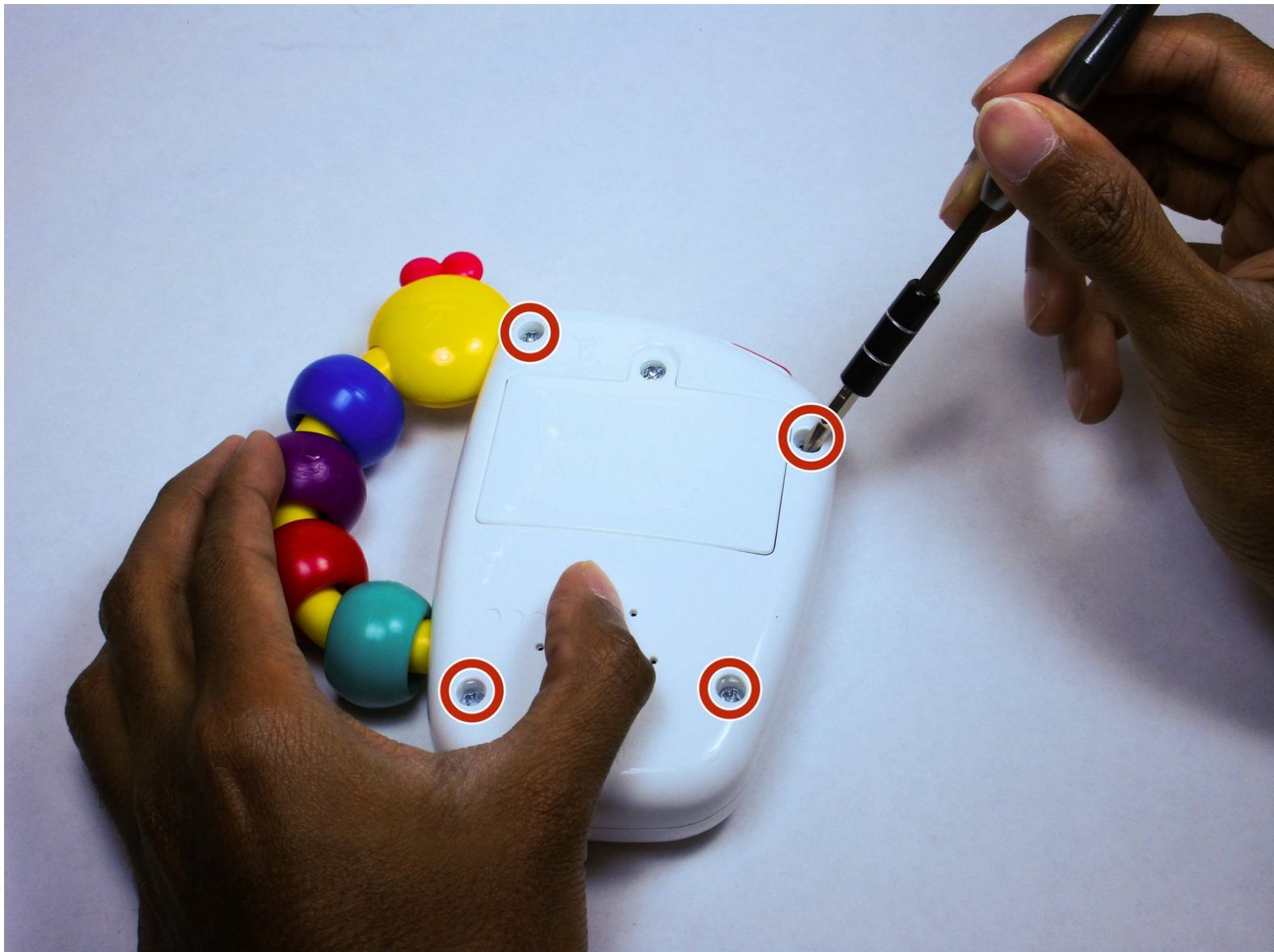




# Baby Einstein Take Along Tunes Handle Replacement

When the handle breaks off, then replace them

Written By: Shreya Sunny



# INTRODUCTION

In this guide, you will learn how to remove and replace the handle with rings



## TOOLS:

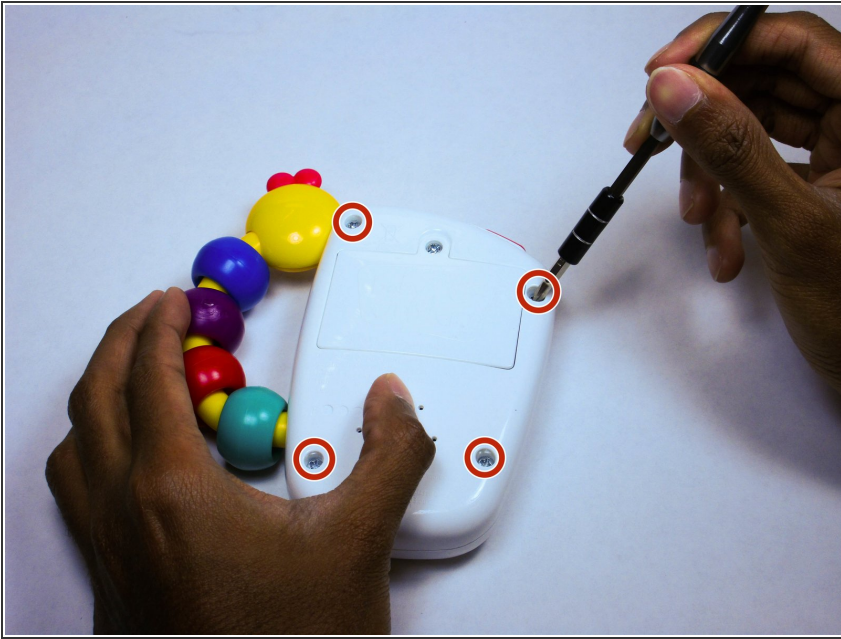
- [Phillips #1 Screwdriver](#) (1)
- [iFixit Opening Tools](#) (1)



## PARTS:

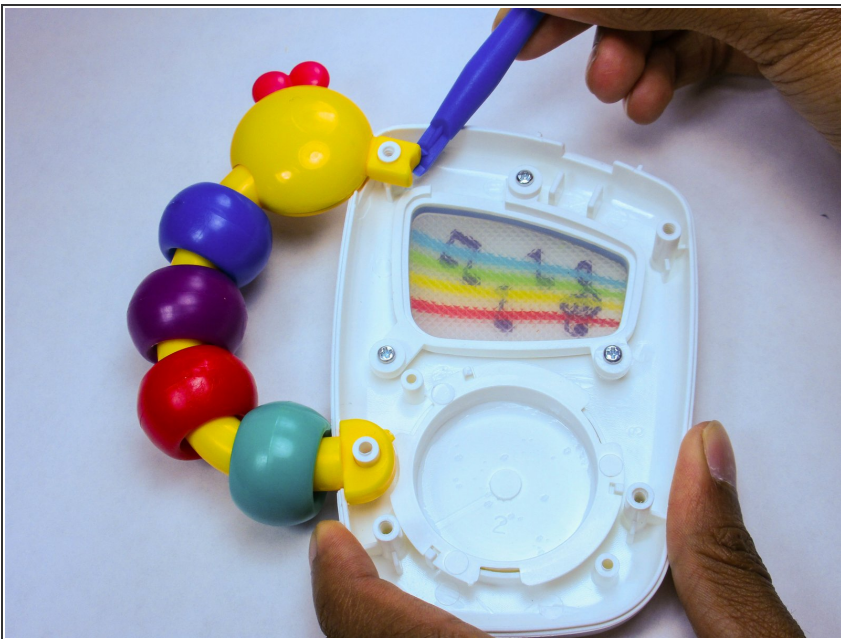
- [A handle with rings](#) (1)

## Step 1 — Handle



- Using a Philips #1 screwdriver, unscrew the four highlighted screws on the back side of the device.

## Step 2



- With the help of a plastic opening tool, remove the handle of the device.

To reassemble your device, follow these instructions in reverse order.