



Baby Einstein Take Along Tunes Speakers Replacement

The speakers stop working so replace the speakers.

Written By: Shreya Sunny





TOOLS:

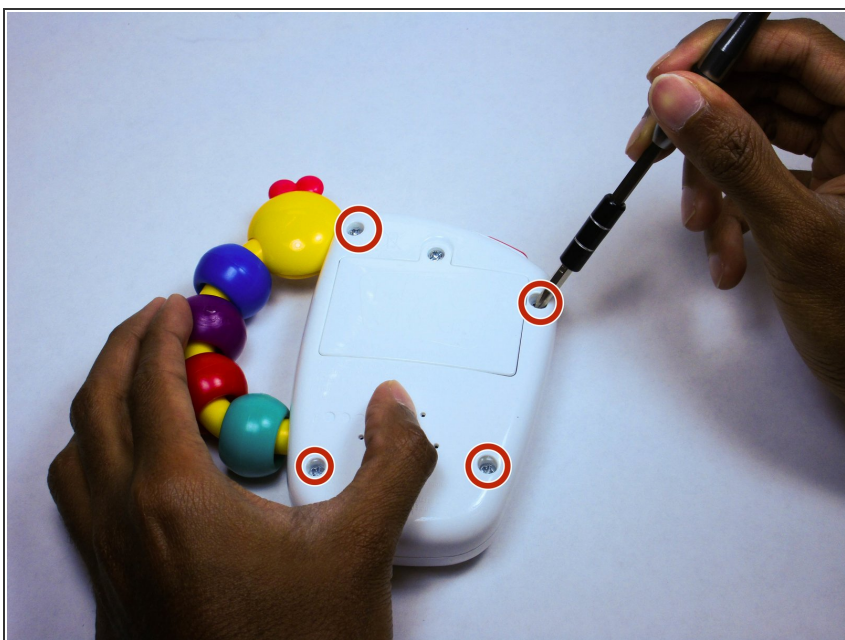
- [iFixit Opening Tools](#) (1)
 - [Phillips #1 Screwdriver](#) (1)
-

Step 1 — Speakers



- Place the device face down on a flat surface, so that the screws on the back are facing the ceiling.

Step 2



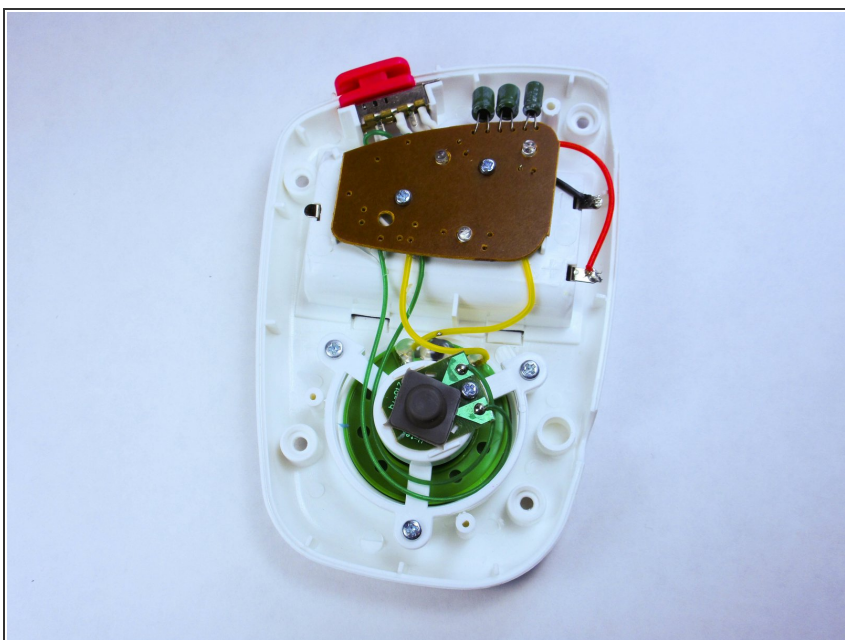
- Using a screwdriver loosen the four screws connecting the body of the device together.

Step 3



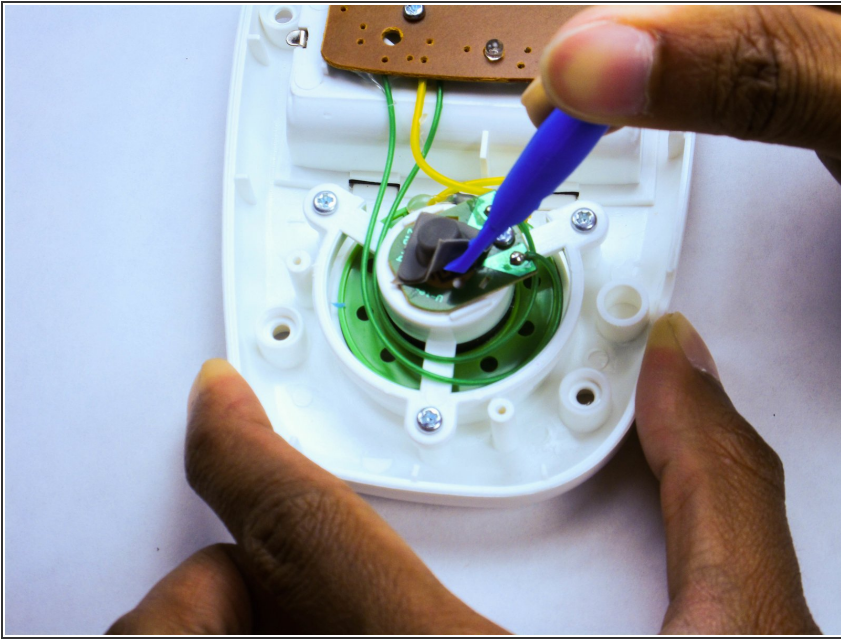
- Once unscrewed, pop the back of the device off using the plastic opening tool.

Step 4



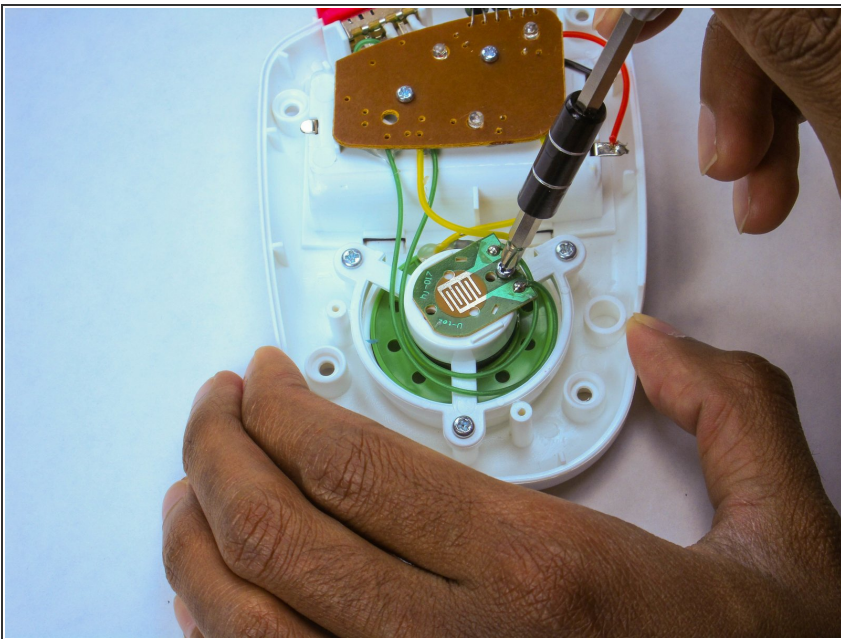
- Take the back of the body and put it aside. We will be working with the back part of the device.

Step 5



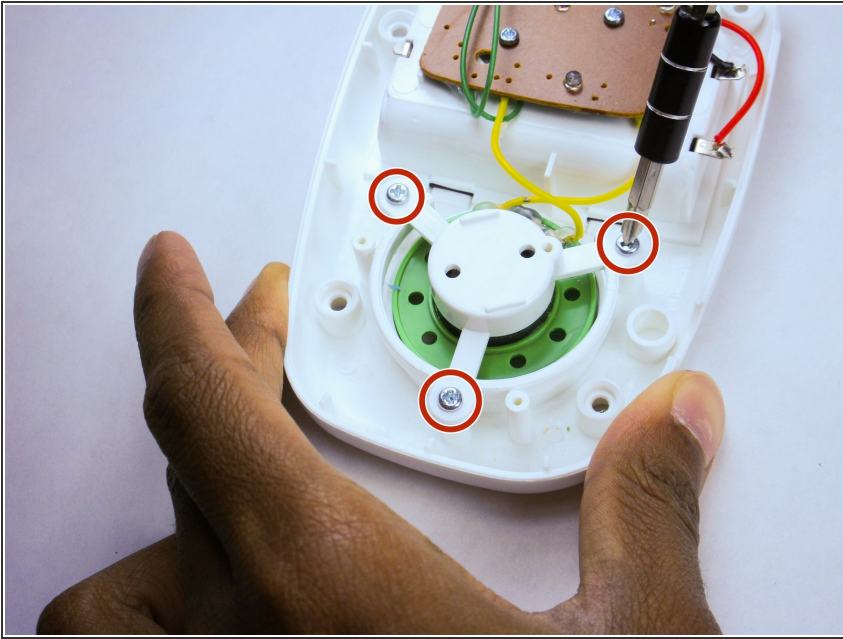
- Remove the rubber button by popping it out with the plastic opening tool.

Step 6



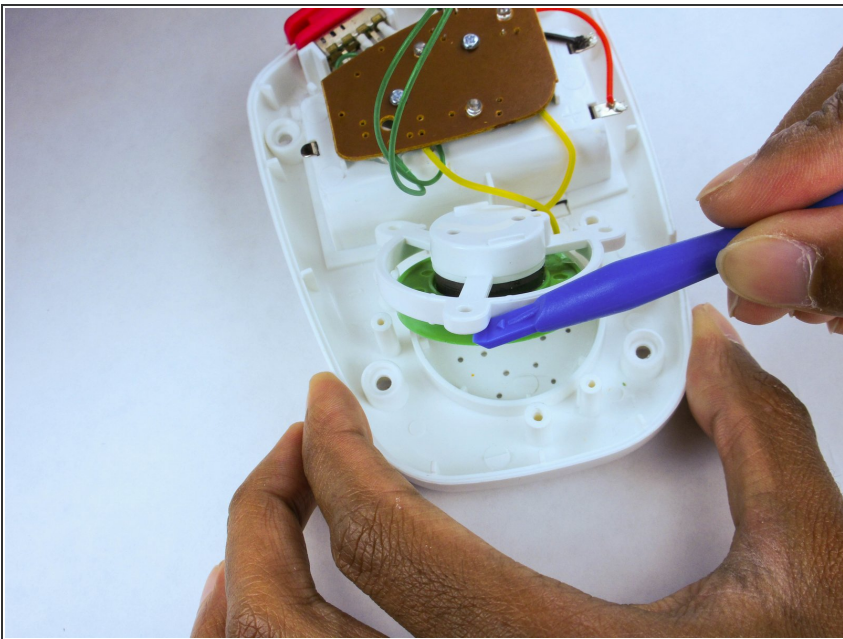
- Loosen the screw on the chip with a screwdriver.

Step 7



- Once the chip is off, loosen the screws on the plastic enclosing the speakers.

Step 8



- Using the plastic opening tool, pop the plastic enclosing off.

To reassemble your device, follow these instructions in reverse order.