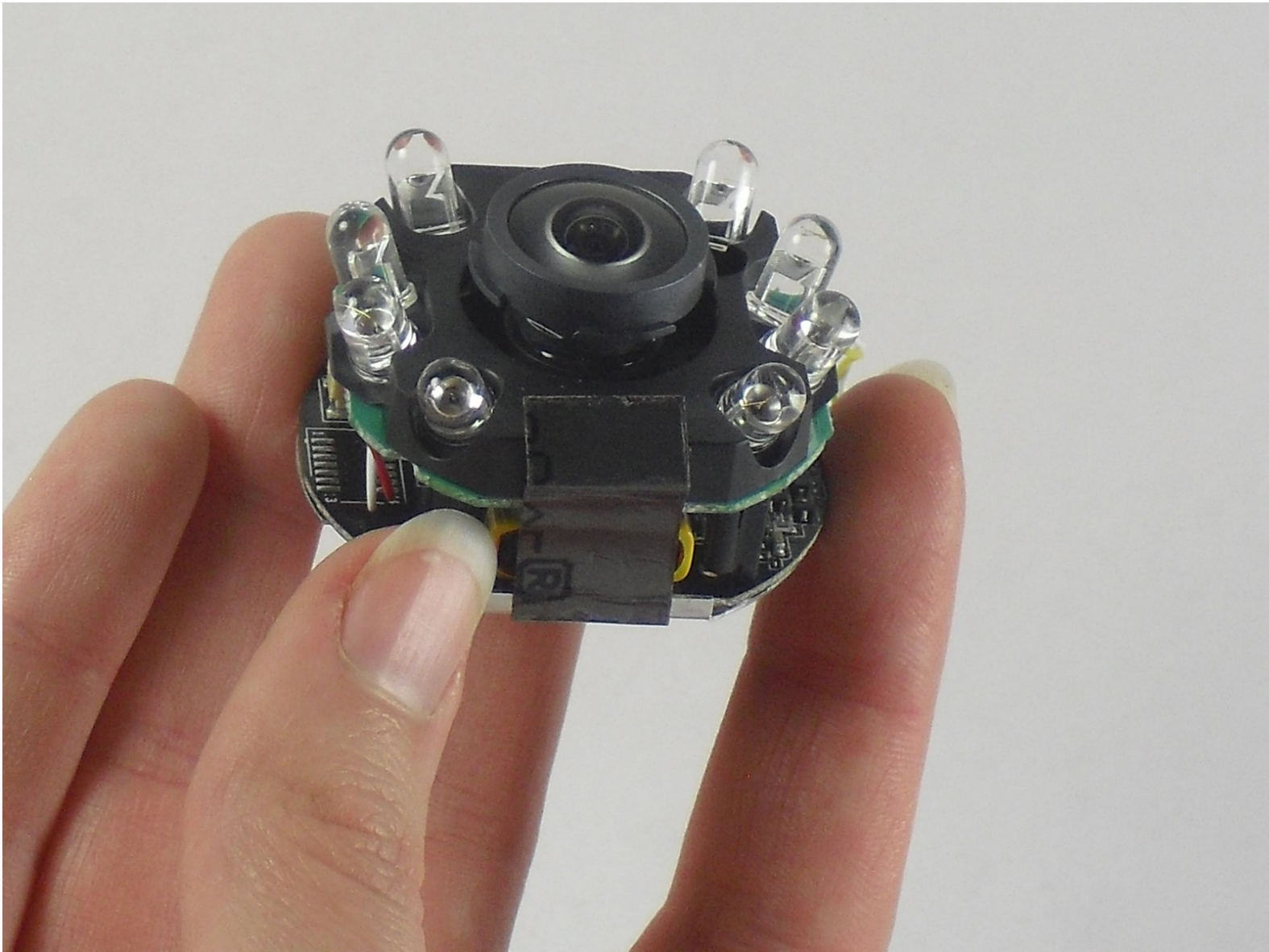




Nest Dropcam Pro LEDs Replacement

Replace the LEDs to ensure your Nest Dropcam Pro takes easily visible video.

Written By: David Foens



INTRODUCTION

This guide is used to replace the LEDs inside the Nest Dropcam Pro in case they are broken or blown. Make sure the device is unplugged before opening.

TOOLS:

- [Soldering Workstation](#) (1)
 - [Desoldering Braid](#) (1)
 - [Spudger](#) (1)
 - [Phillips #0 Screwdriver](#) (1)
-

Step 1 — Outer Case



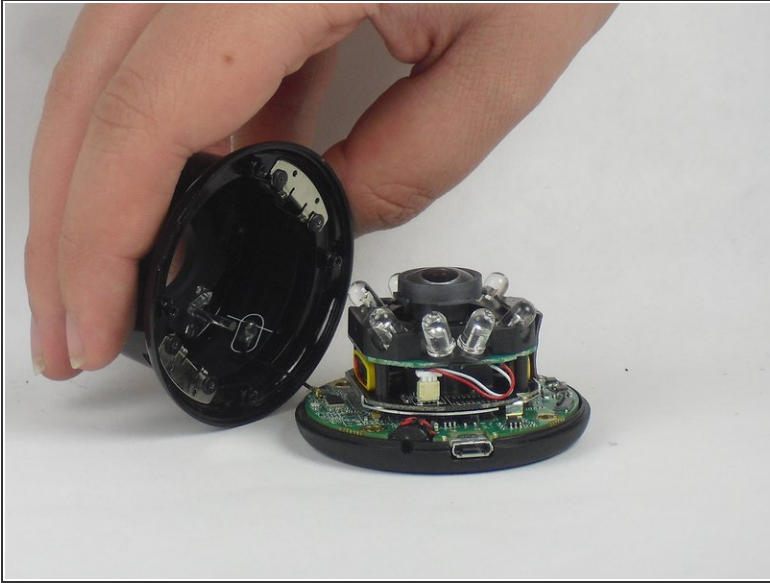
- Press in the mounting clips on each side of the case to remove the camera from the mount.

Step 2



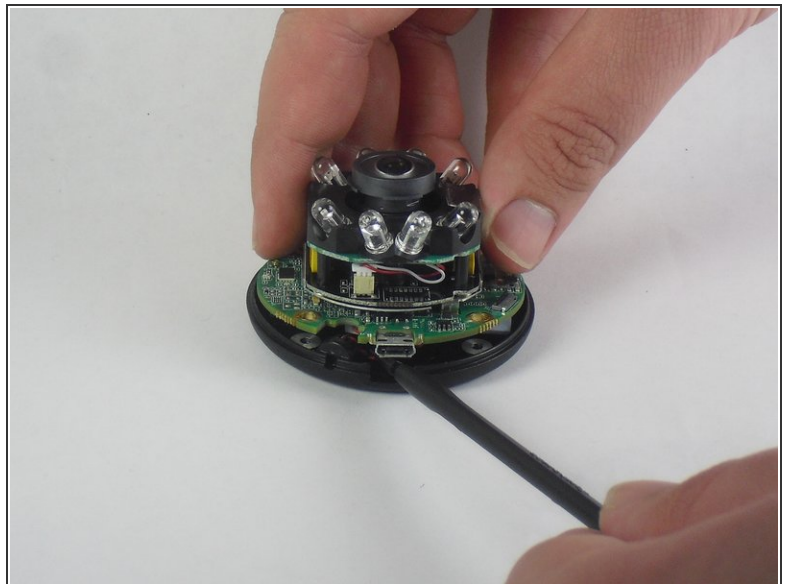
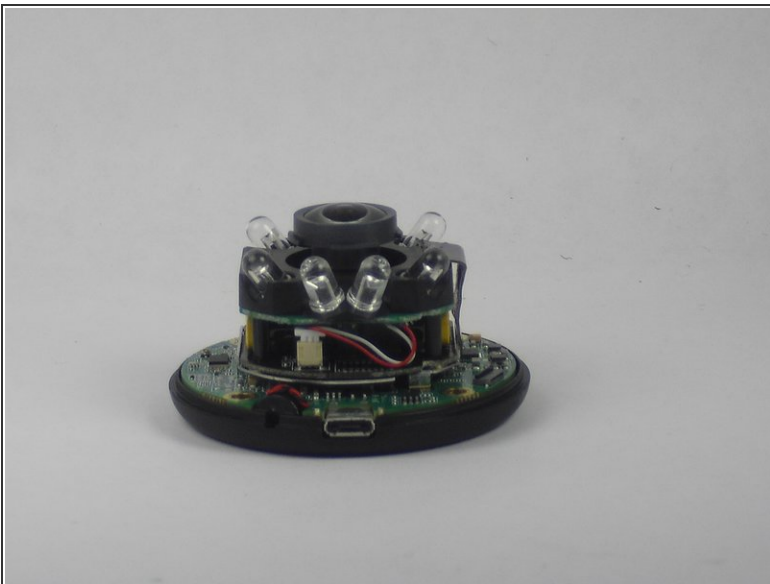
- Using a Philips #0 screwdriver, remove the four 3 mm screws.

Step 3



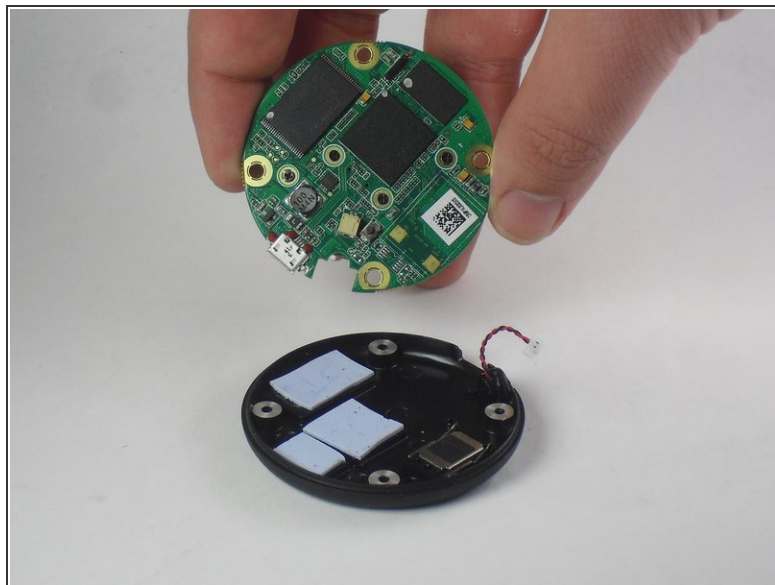
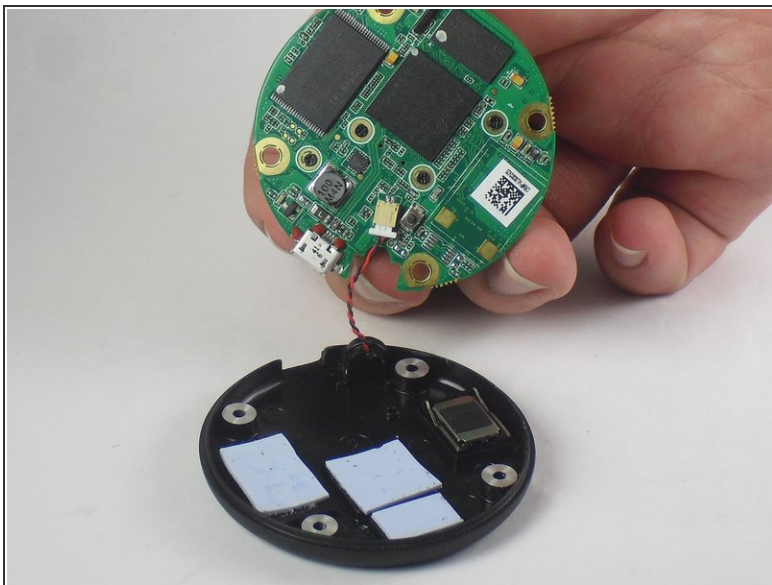
- Lift the front of the case slowly, as there is an antenna cable attached to the motherboard.
- Carefully disconnect the antenna cable from the motherboard. You will feel this cable "pop" out of place when disconnected.

Step 4 — Motherboard



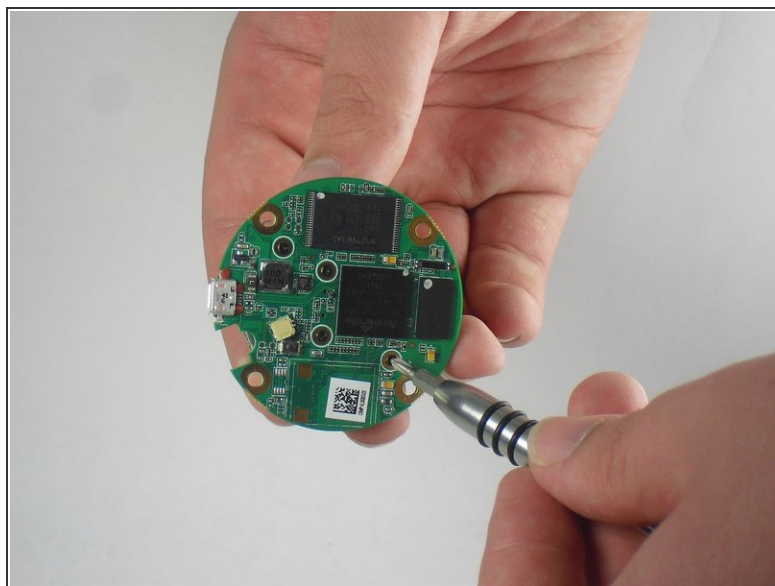
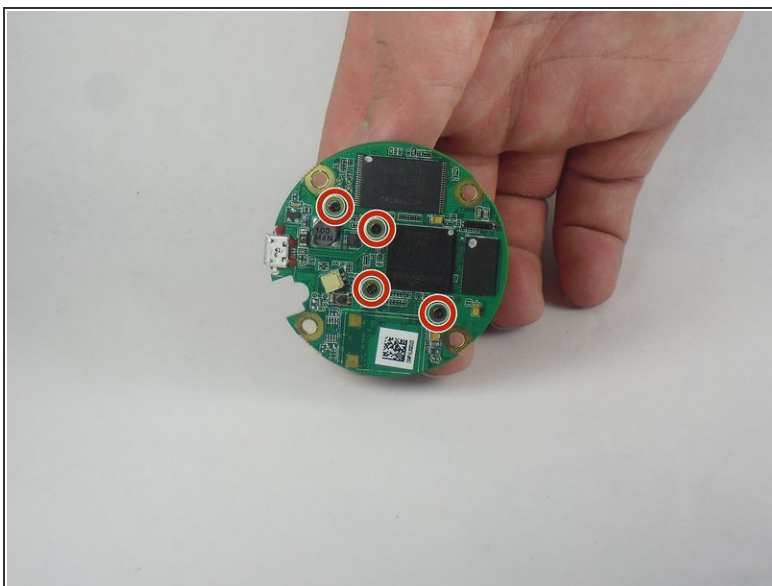
- Insert a spudger tool under the micro-USB port and lift to separate the motherboard from the back case.

Step 5



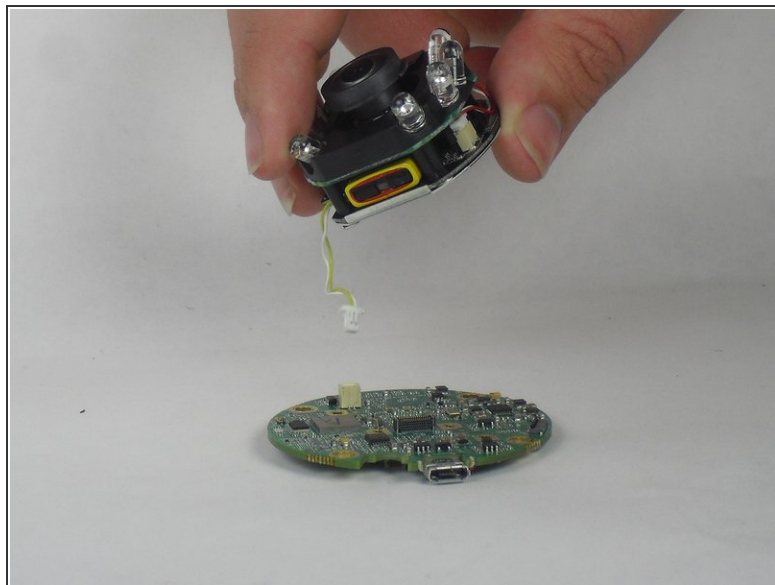
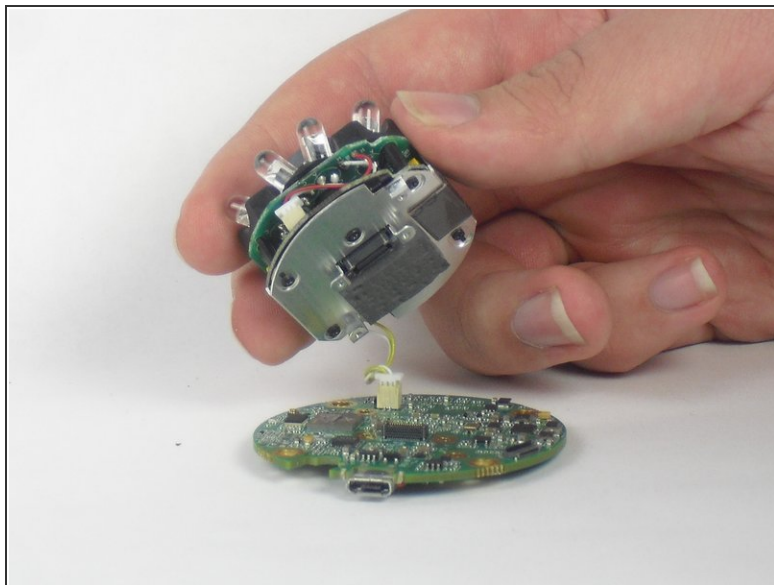
- Pull the motherboard away from the back case.
- Unplug the red and black cable connecting the motherboard to the back case.

Step 6



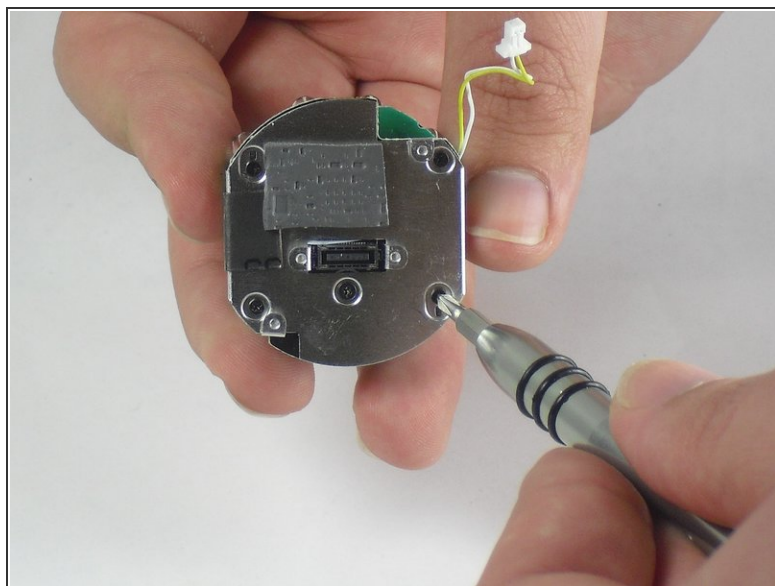
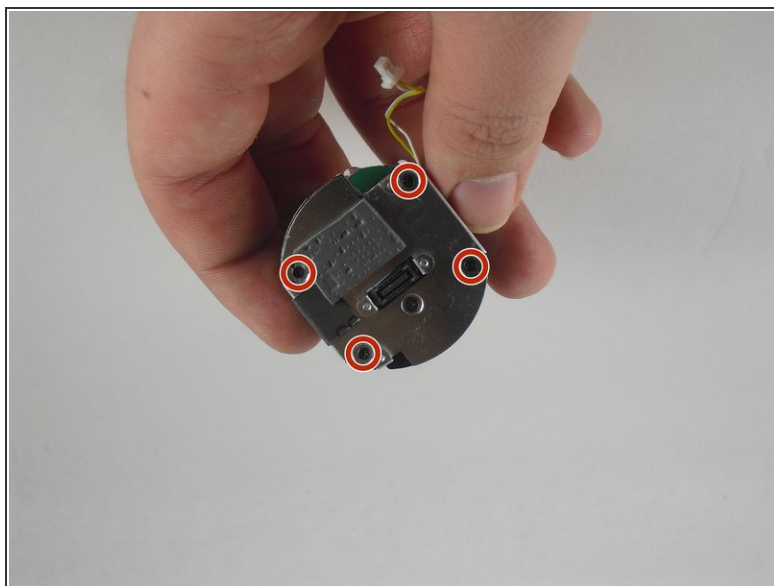
- Using a Philips #0 screwdriver, remove the four 2 mm screws.

Step 7



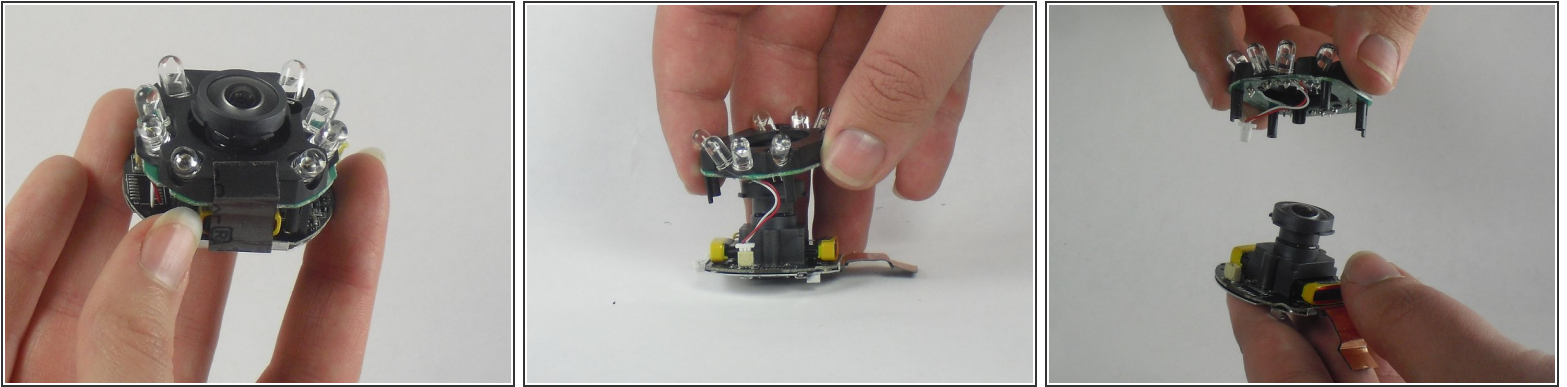
- Lift the lens and LED assembly away from the motherboard.
- Unplug the yellow and white cable from the motherboard.

Step 8 — LEDs



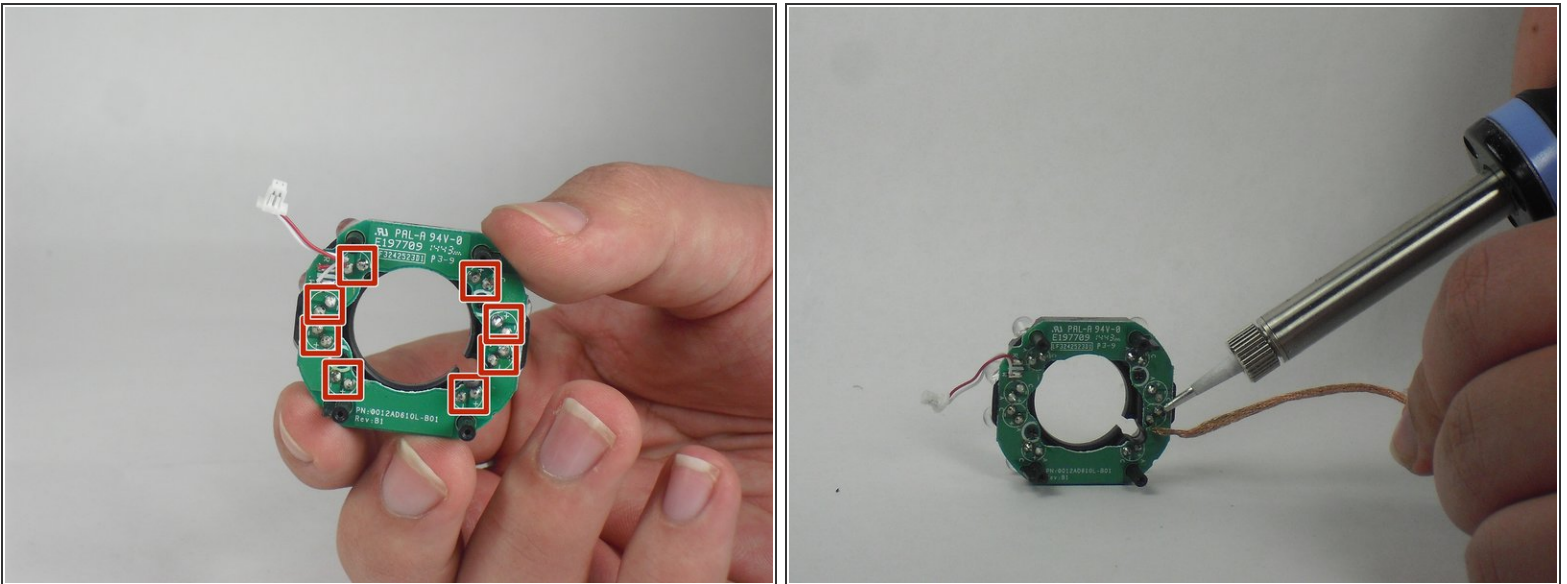
- Using a Philips #0 screwdriver, remove the four 2mm screws.

Step 9



- Peel off the paper seal holding the Lens and LEDs together.
- Disconnect the red and white wire from the bottom board.

Step 10



- Using a de-soldering tool, disconnect the LEDs from the motherboard.
- ❗ If you don't know how to solder, check out [How To Solder and Desolder Connections](#).

⚠ Soldering irons are extremely hot and can burn you if you touch them!

⚠ If you hold the soldering iron tip at the same spot for too long, it can strip the metal from the plastic board. You may not be able to solder wire to that point again.

To reassemble your device, follow these instructions in reverse order.