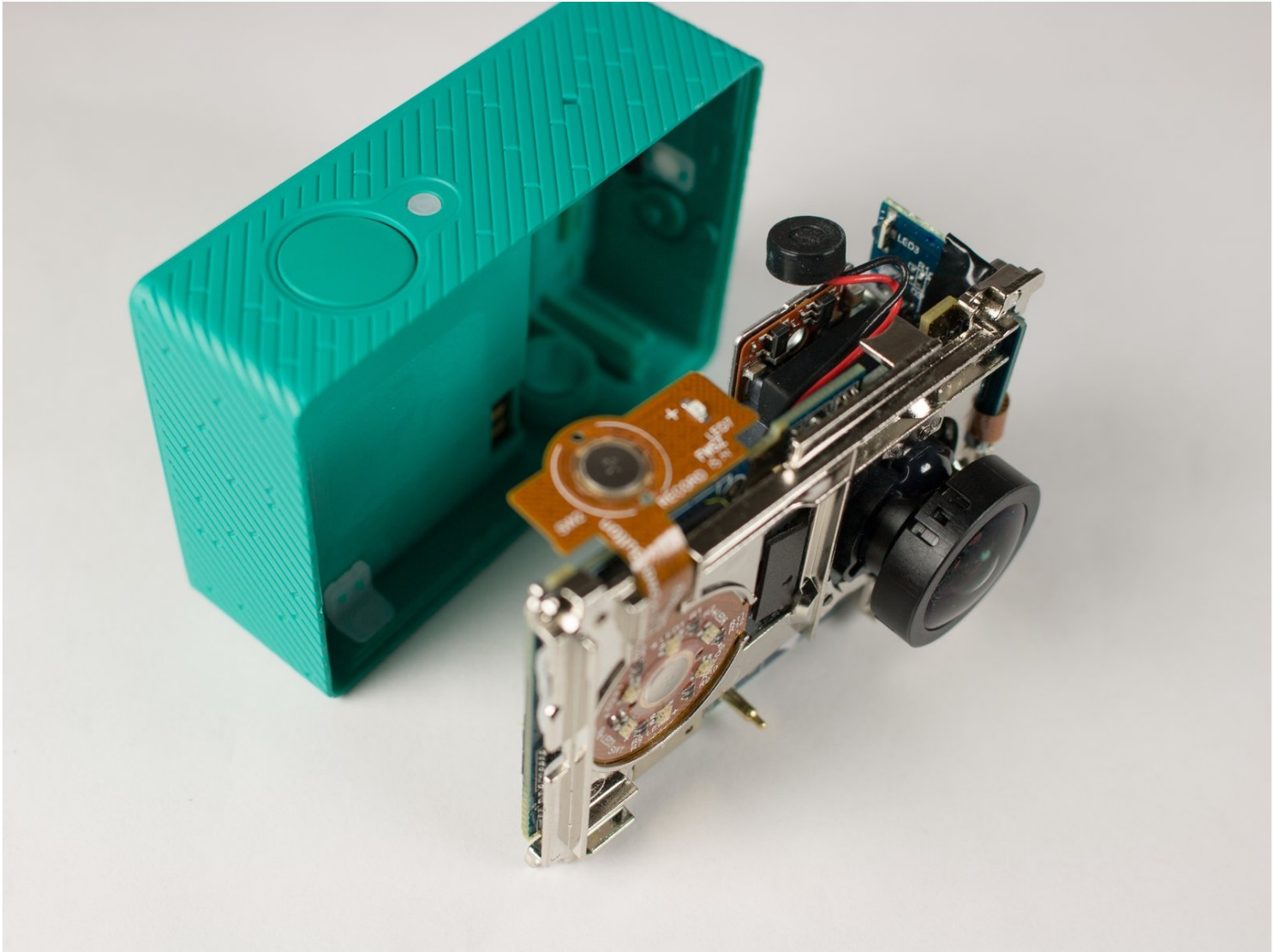




# Xiaomi Yi Back Panel Replacement

If your camera's back case is damaged, you...

Written By: Karol Gonzalez



## INTRODUCTION

If your camera's back case is damaged, you might consider changing it. To remove the back panel you will need a small blue plastic opening tool.

---

### TOOLS:

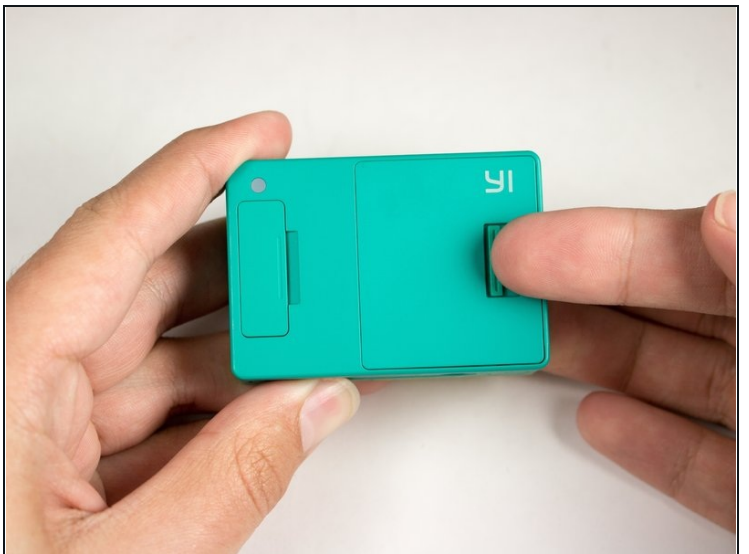
[iFixit Opening Tool](#) (1)

[Tweezers](#) (1)

[64 Bit Driver Kit](#) (1)

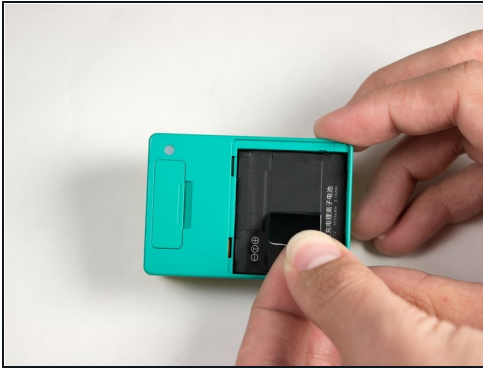
---

### Step 1 — Battery



- Push the battery door switch to the left.
- Lift the battery door up.

## Step 2



- Lift the battery tab up.
- Remove the battery by pulling the removal tab.

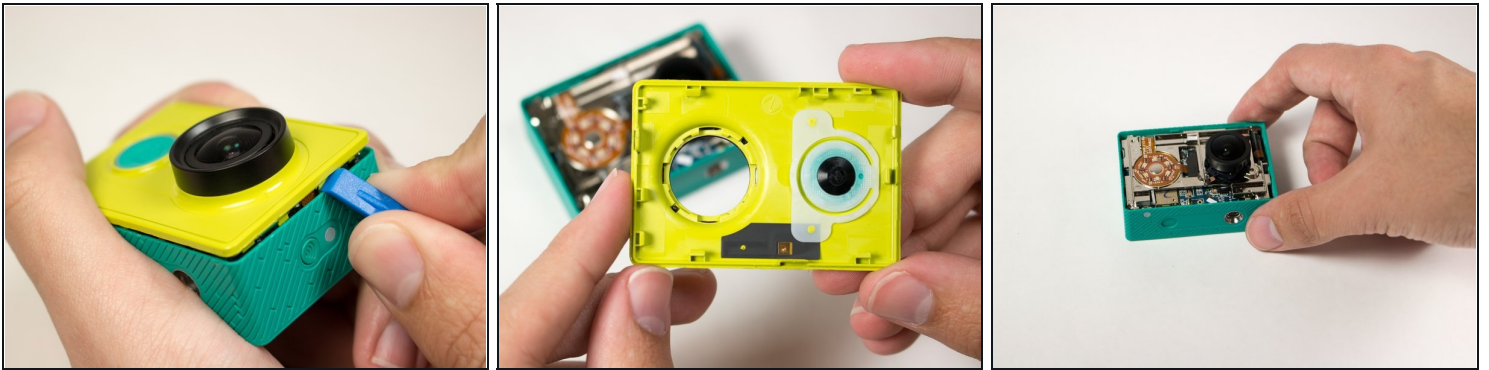
## Step 3 — Front Panel



- Introduce the plastic opening tool into any of the sides of the camera.
- Pry with the plastic opening tool at the seam between the front and the back panel.

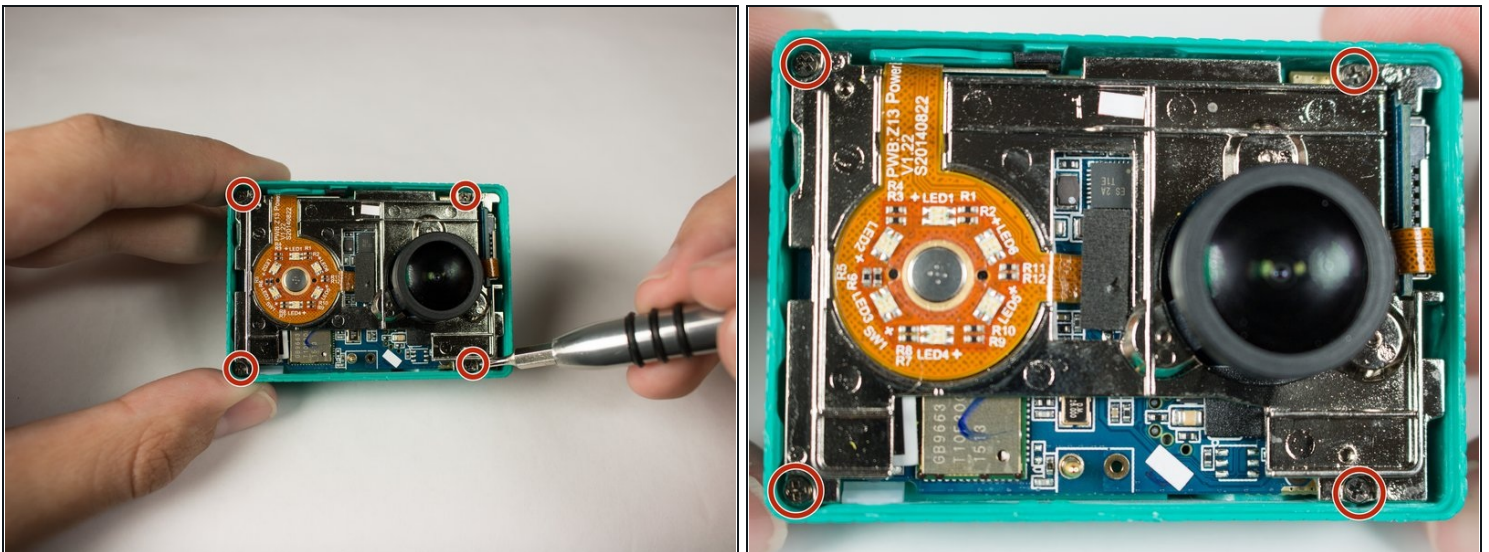


## Step 4



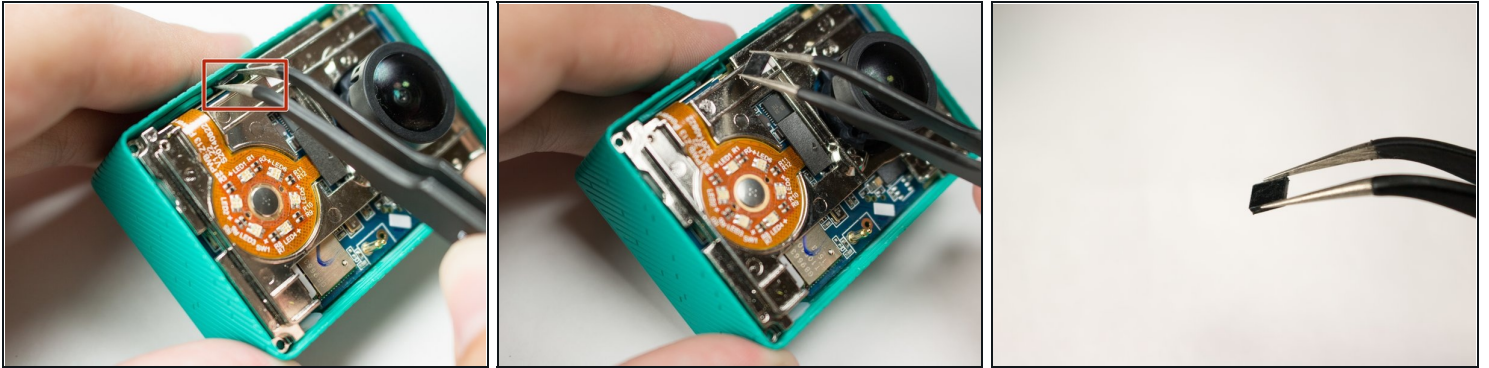
- Slide prying tool along the seam until front panel is fully separated from the back panel.

## Step 5 — Back Panel



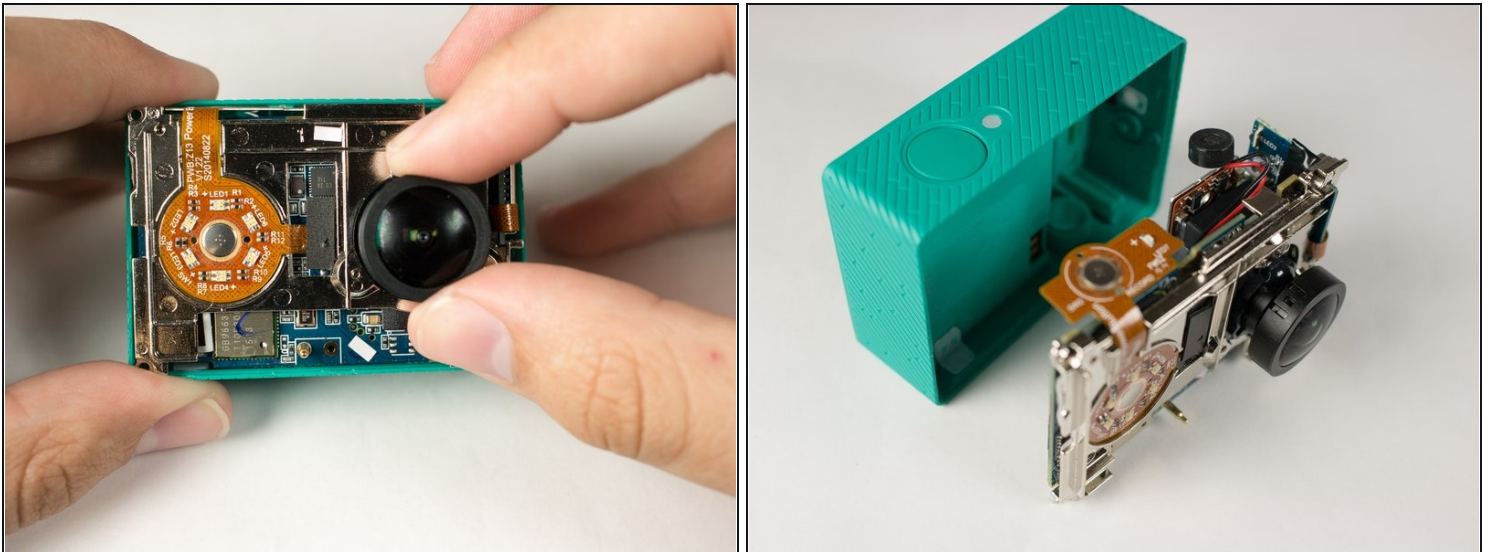
- Remove the four 3.8 mm Phillips #000 screws located in the outer corners of the motherboard.

## Step 6



- Pull on and remove the black spacer located at the top inside of the camera body using the [tweezers](#) and set the part aside.

## Step 7



- Remove the motherboard from from the back case by gently pulling on the lens housing.
- Back panel remains.

---

To reassemble your device, follow these instructions in reverse order.