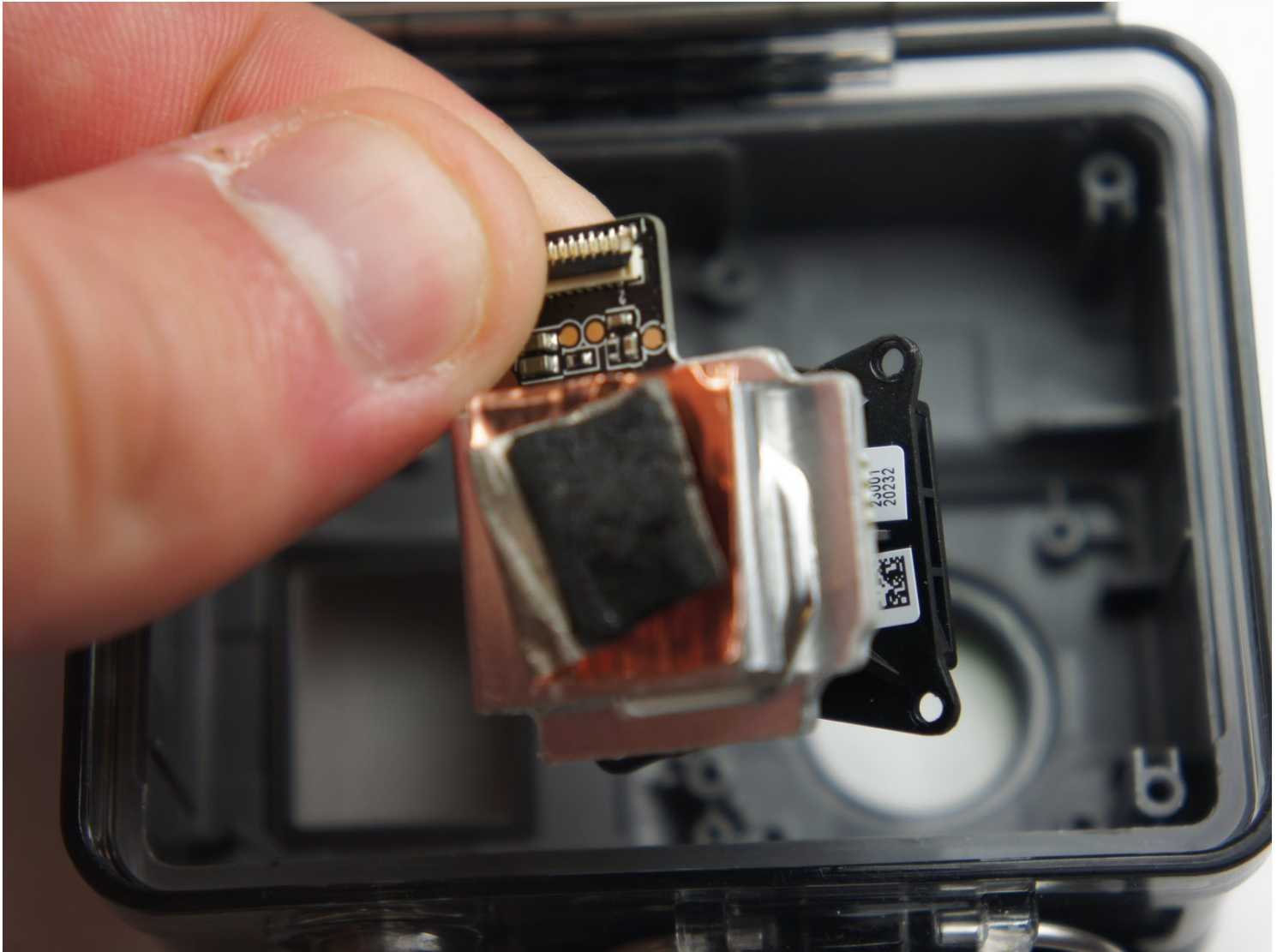




# GoPro Hero+ LCD Lens Replacement

To remove the lens assembly, you must remove...

Written By: Matthew Tinkey



# INTRODUCTION

To remove the lens assembly, you must remove some internal parts first. Some of these screws are in tight places, so they will be tedious to access.

## TOOLS:

[Metal Spudger Set](#) (1)  
[iFixit Opening Tool](#) (1)  
[Tweezers](#) (1)  
[Phillips #00 Screwdriver](#) (1)  
[Phillips #000 Screwdriver](#) (1)

## PARTS:

[GoPro Hero+ LCD Lens](#) (1)

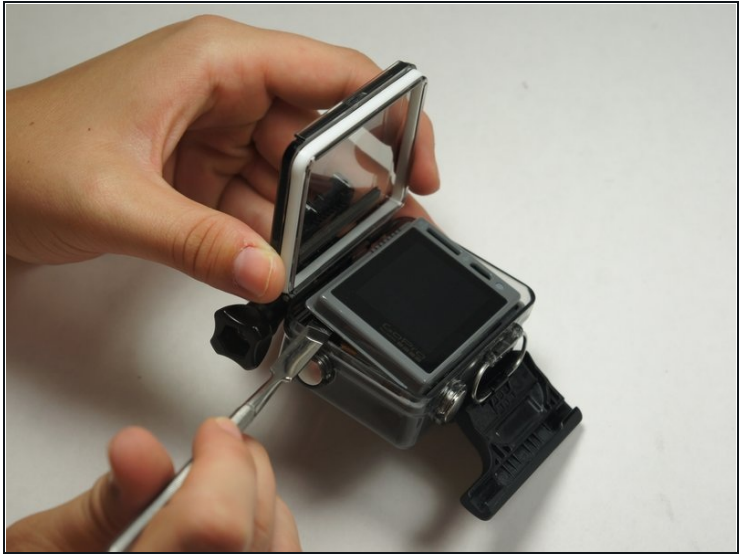
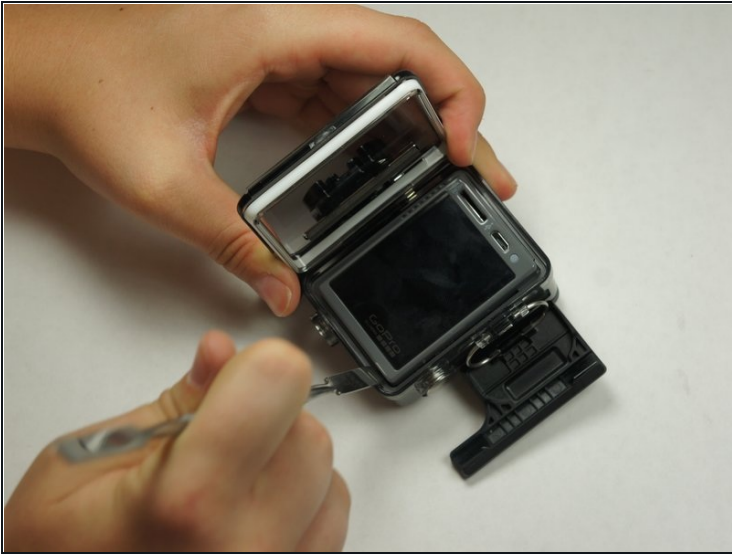
## Step 1 — Back Panel



 Be sure to power off the GoPro before you start disassembly.

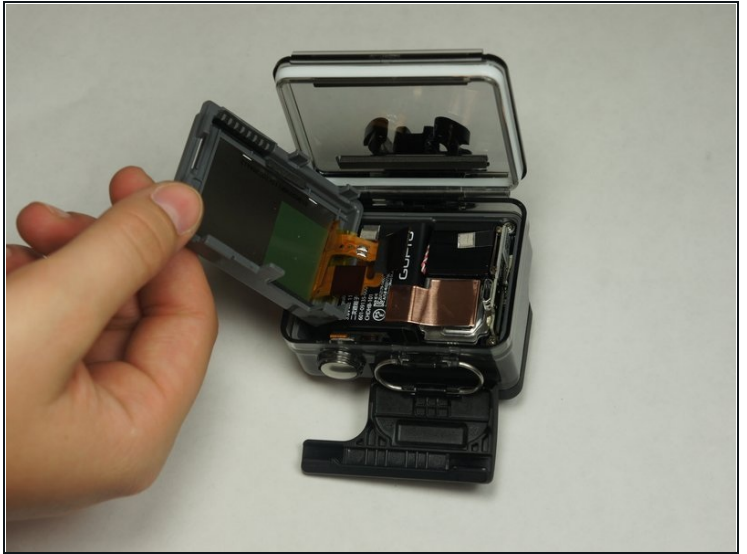
- Pop up and pull back on the clip to remove the screen cover and expose the back panel with the touchscreen.

## Step 2



- Use the metal spudger to pry around the perimeter of the panel.
- Pry the panel upwards by inserting the metal spudger into the corner crease between the panel and camera shell.

### Step 3



- Pry around the panel to ensure it is not attached to the device.
- Move the panel to the side so you can access the internal components.

⚠ The panel is still attached to the rest of the device with a ribbon cable, so be sure to not tear or damage the cable.

### Step 4 — Battery

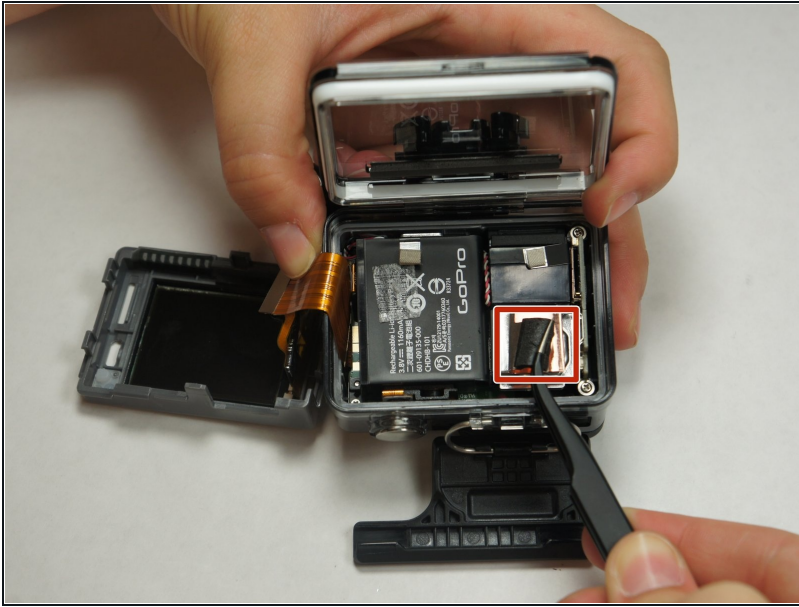


- Peel back the rear panel ribbon cable that is adhered to the battery until it is completely separated from the battery.

⚠ Be careful of metal contacts on strip; they can be sharp.

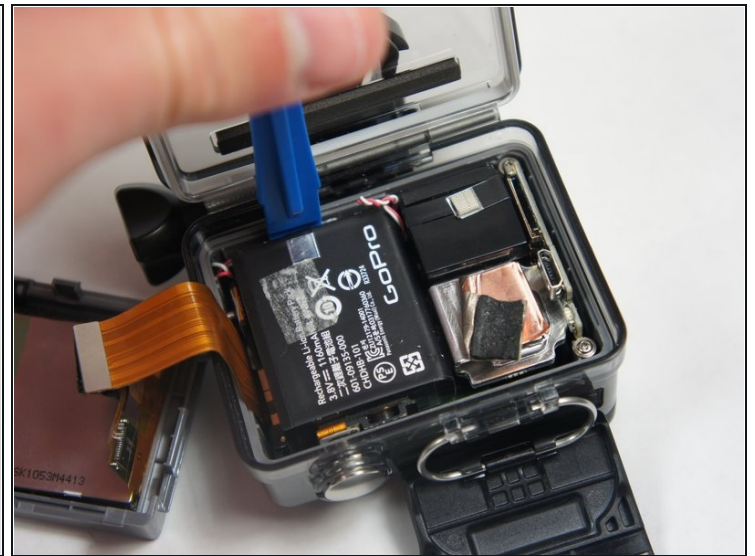


## Step 5



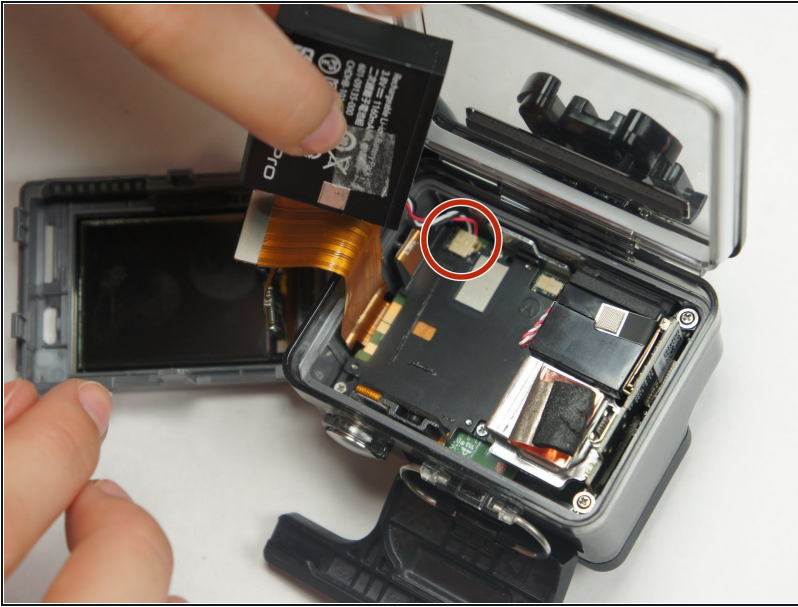
- Using [tweezers](#), peel off the copper tape on the right side of the battery.

## Step 6



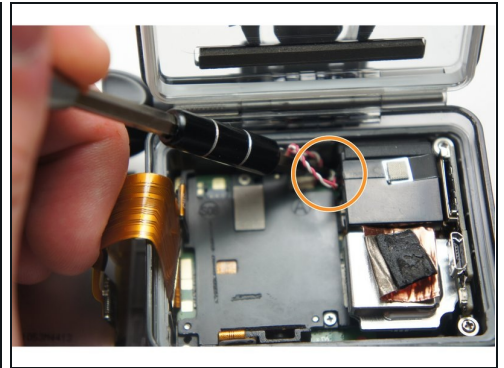
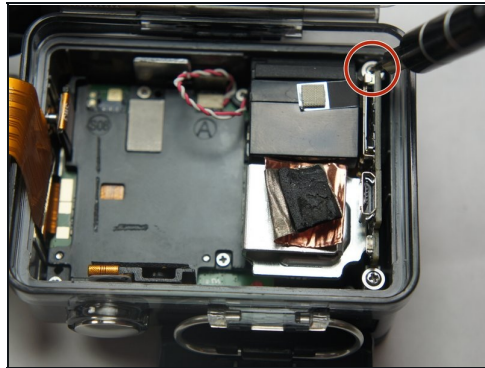
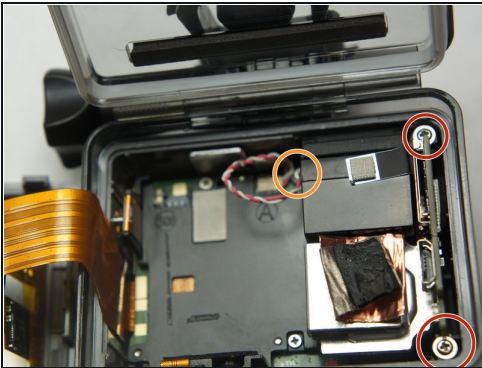
- Place the plastic opening tool at one of the edges of the battery then pry until the battery is removed from the GoPro.

## Step 7



- Use a pair of tweezers to disconnect the battery connector from the motherboard.
- Gently pull the battery off the motherboard. Pulling vertically off the motherboard will give a clean release.

## Step 8 — MicroSD/Micro USB Port Assembly



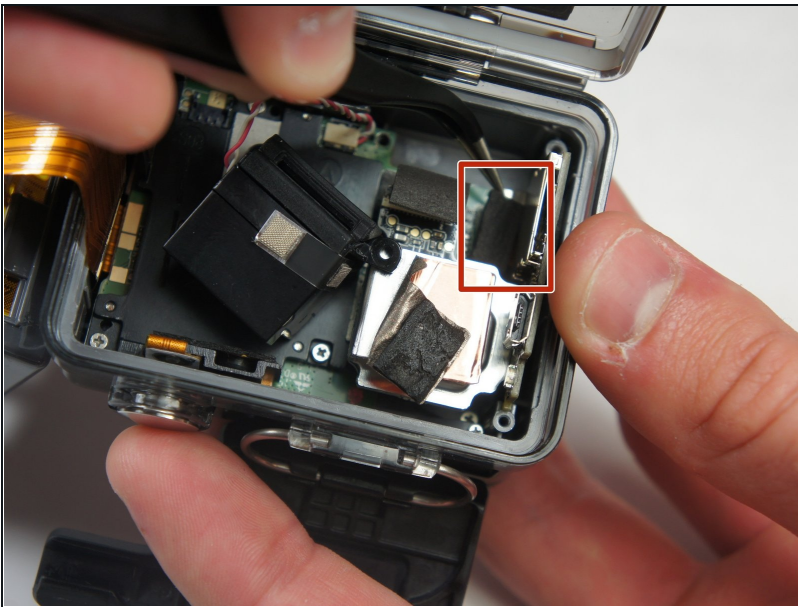
- Remove the two 6 mm Phillips #00 screws.
- Remove the single 4 mm Phillips #000 screws.

## Step 9



- Remove the image sensor from the camera.
- ① You do not have to unplug the black box to remove the USB/SD chip.

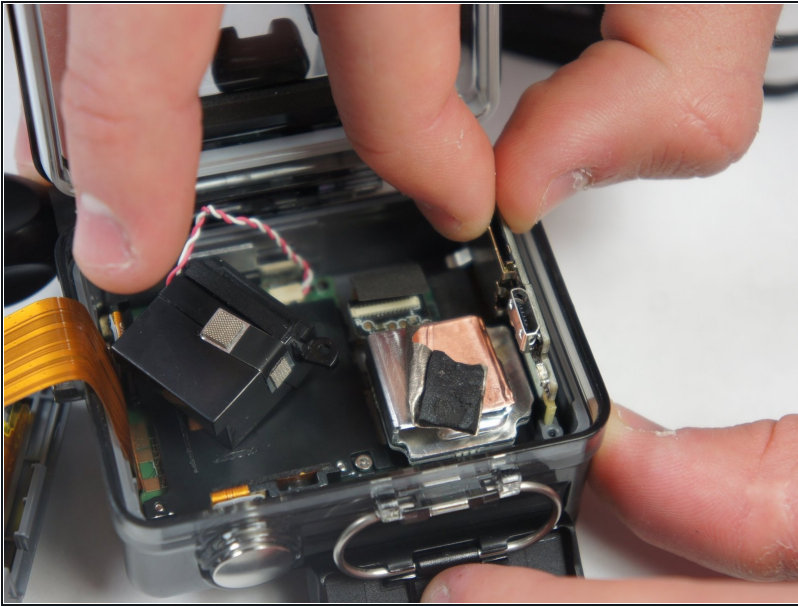
## Step 10



- Grab the edge of the ribbon cable with the [tweezers](#) and gently pull until the cable is disconnected from the motherboard.
- ⚠ Be careful when removing the ribbon cable. You must pull gently or you can rip the ribbon off of its contacts.

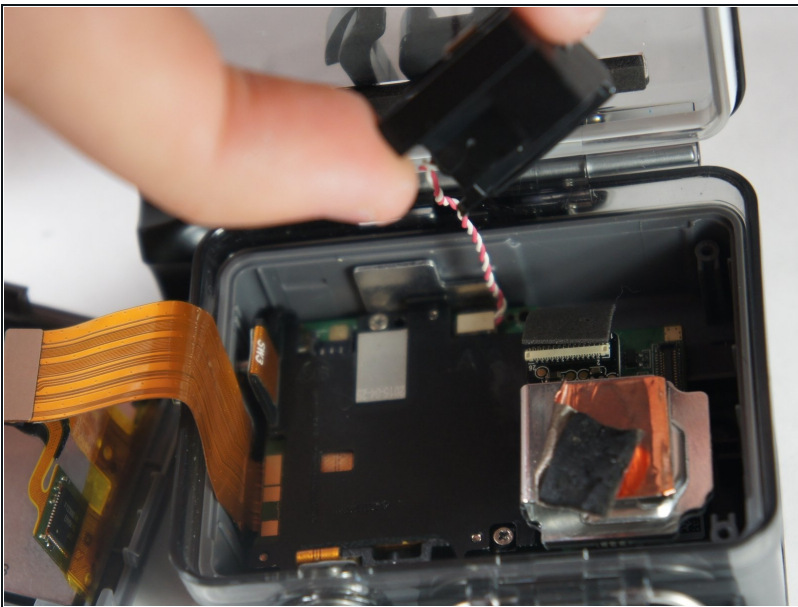


## Step 11



- Gently lift the microSD/Micro USB assembly up and out of the device.

## Step 12 — Image Sensor

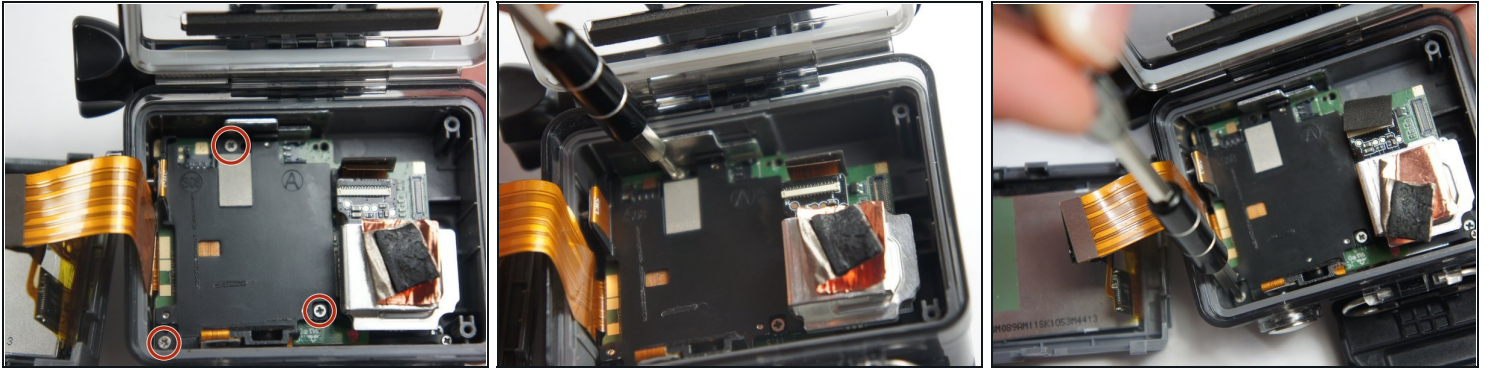


- Use your fingers and gently pull out the sensor from the motherboard by slowly and gradually pulling up on the image sensor box.

⚠ Do not yank on the image sensor, it can rip out the wiring or damage the motherboard.

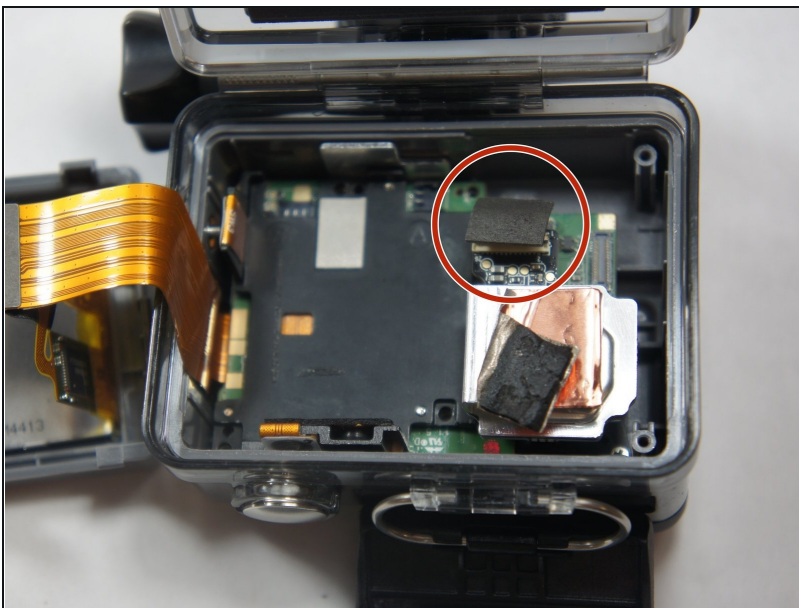


## Step 13 — Motherboard



- Remove the three 4 mm Phillips #000 screws securing the motherboard.

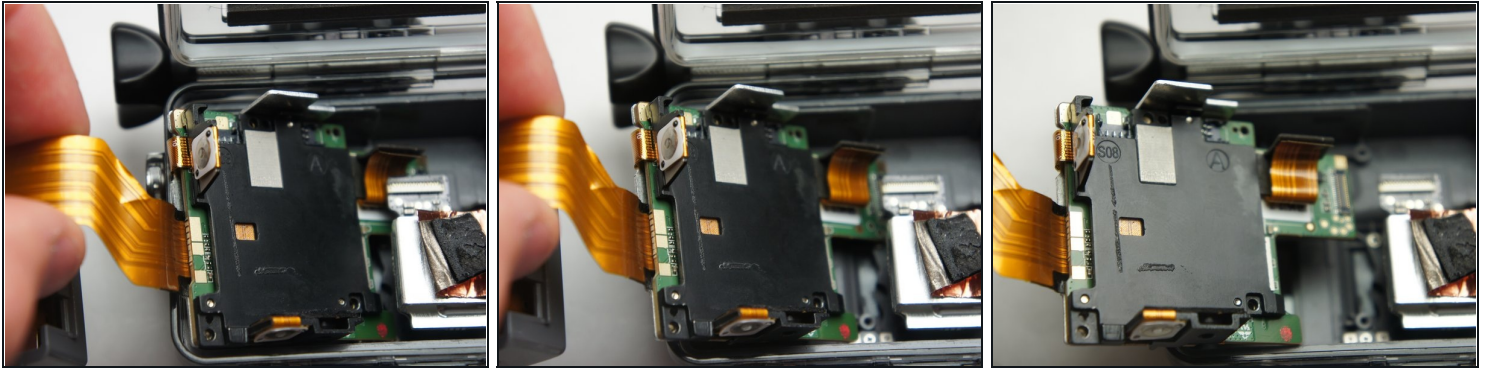
## Step 14



- Use your fingers to gently remove the ribbon connected to the lens.

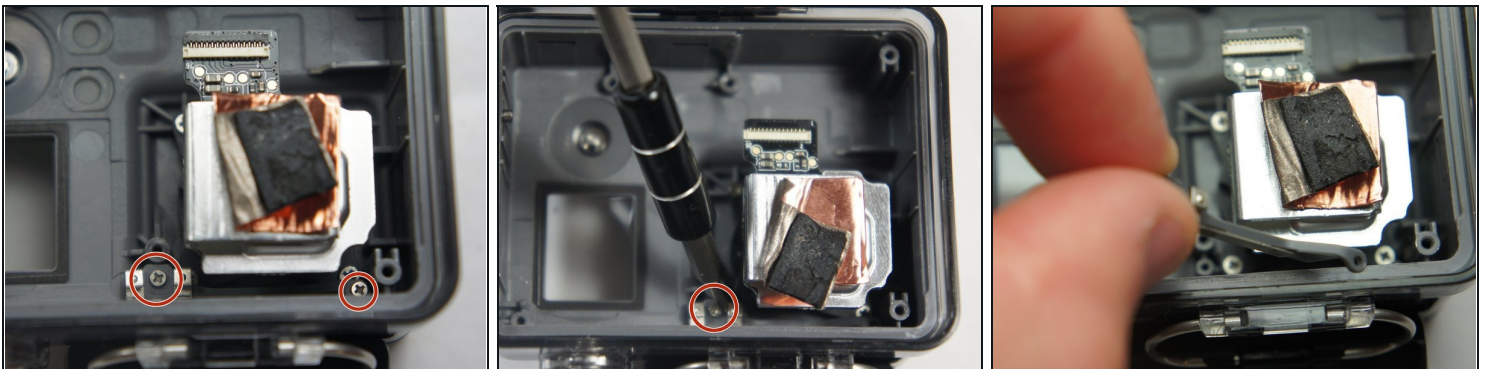
⚠ Be careful when removing the ribbon cable. Pull off gently or you can separate the ribbon from the contacts.

## Step 15



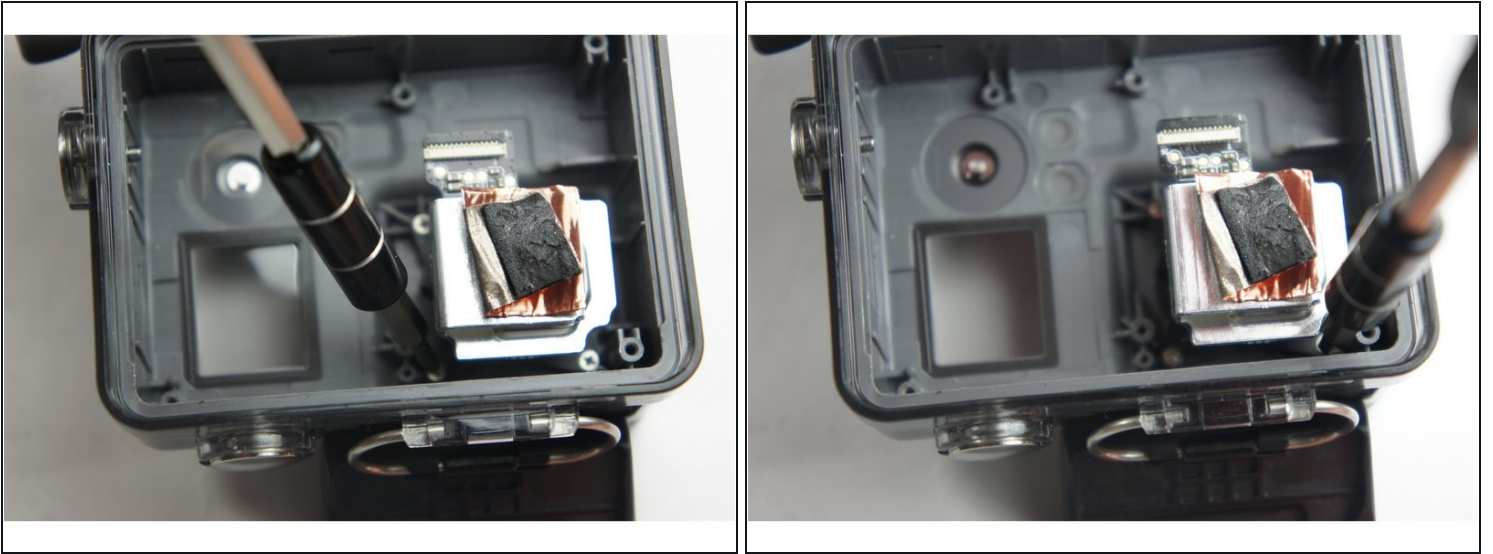
- Use your fingers and carefully pull out the motherboard from under the lens. It may take a little bit of adjusting to get it out.

## Step 16 — Lens



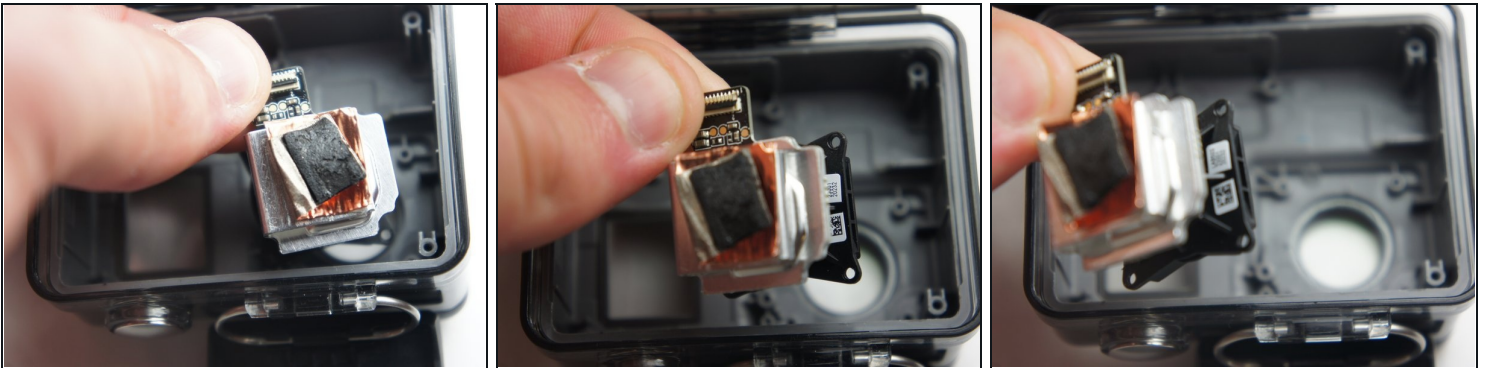
- Remove the two 4 mm Phillips #000 screws securing the top button.

## Step 17



- Remove the four 4 mm Phillips #000 screws securing the lens to the case.

## Step 18



- Gently lift the lens up and out of the device.

---

To reassemble your device, follow these instructions in reverse order.