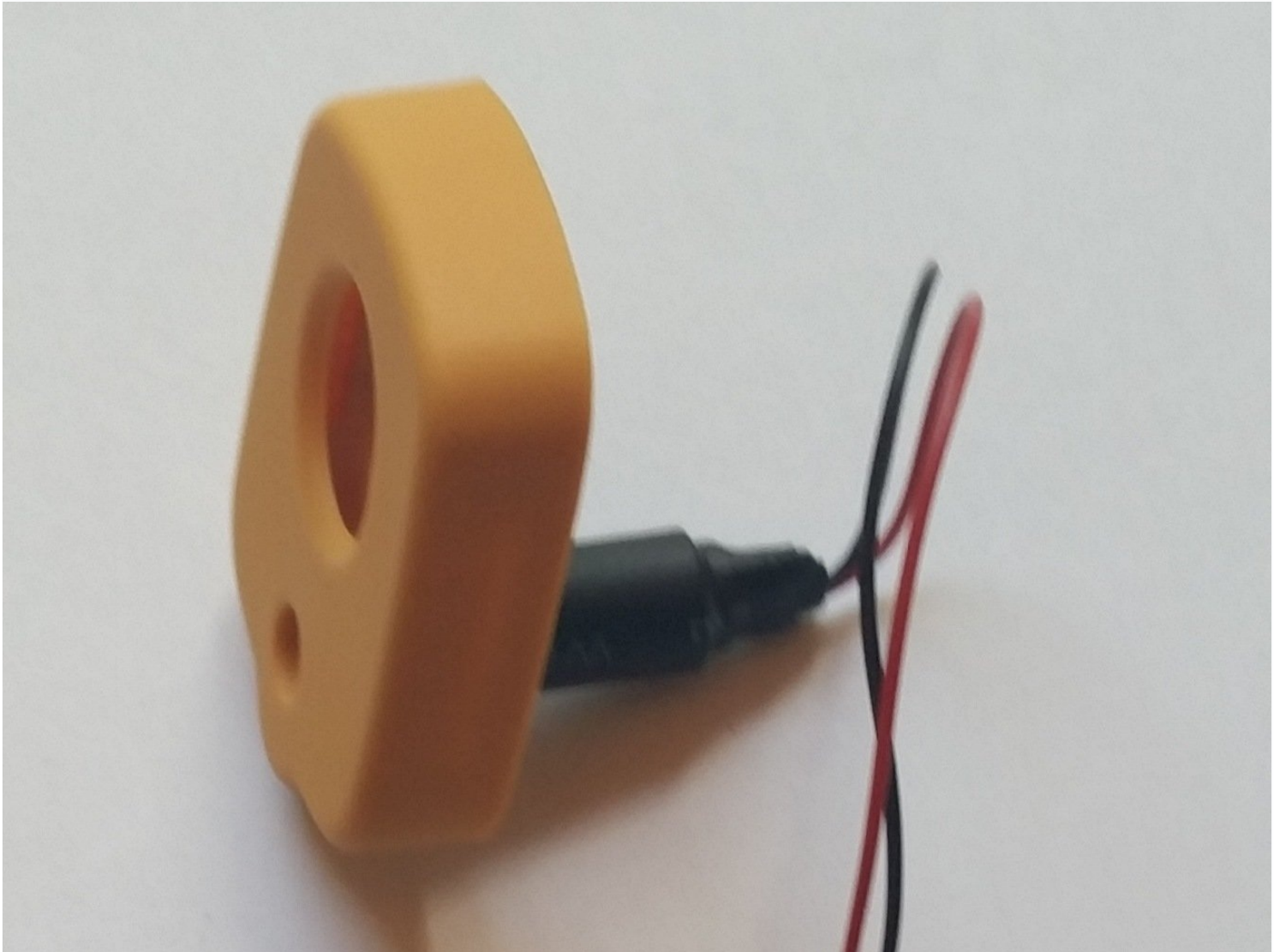




Etekcity Lasergrip 1080 Laser Replacement

This will teach you to uninstall and reinstall...

Written By: Patrick Crawford



INTRODUCTION

This will teach you to uninstall and reinstall a laser from the motherboard. This is needed if the laser stops working and cannot be turned on by pressing the button to do so. The tools required will be a screwdriver and a soldering iron. The soldering iron is hot and may cause a potential hazard. For those who are uncomfortable soldering, there is a link to a soldering guide in the Troubleshooting section of the device page.

TOOLS:

[Soldering Iron](#) (1)

[Phillips #0 Screwdriver](#) (1)

[iFixit Opening Tool](#) (1)

Step 1 — Battery



- Pull the battery cover away from the handle by gripping near the thumb groove.

Step 2



- Gently pull the battery out of the handle.

⚠ Excessive force could damage wires.

Step 3



- Disconnect the battery by pulling the connector away from it.
 - Positive first
 - Negative second

⚠ When replacing the battery, this order is reversed.

Step 4 — Buttons



- Remove the battery cover from the device by pulling it straight out.

Step 5



- Using the plastic opening tool remove the front and rear yellow covers.

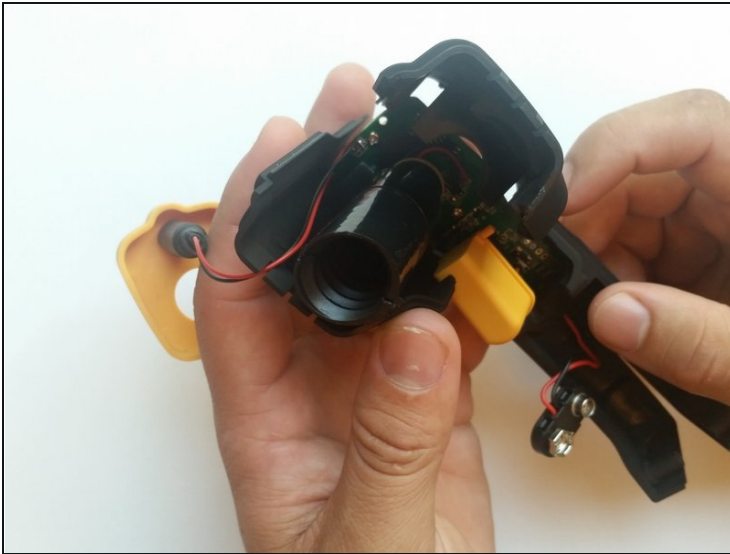
⚠ When removing the back cover, be careful not to lose the buttons as they are not connected.

Step 6



- Remove the two 3.1 mm Phillips #0 screws.

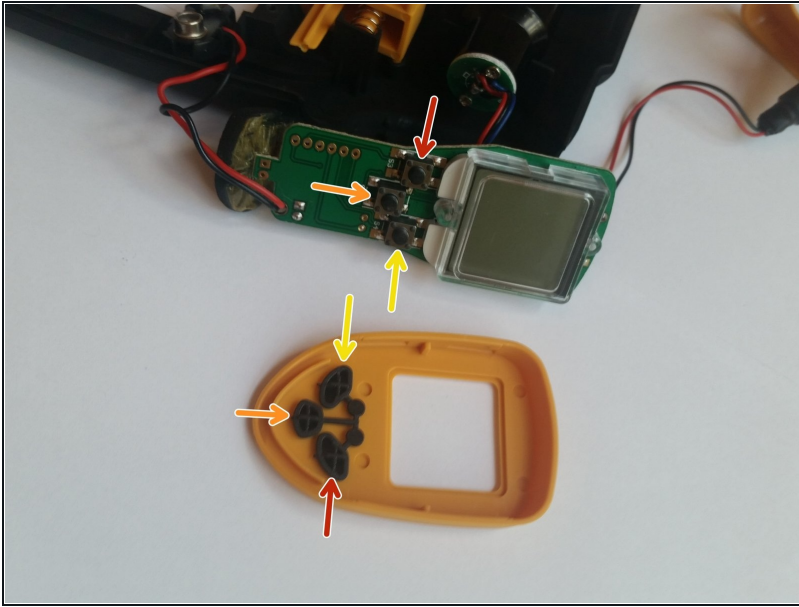
Step 7



- Pull the two halves apart.

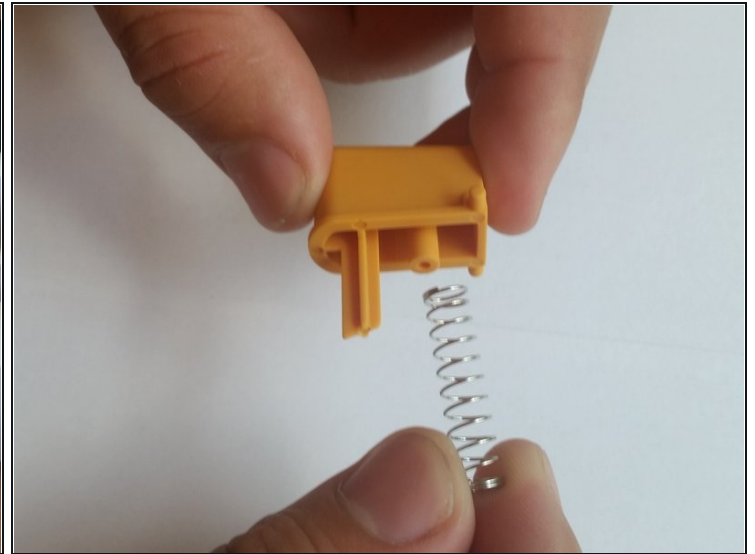
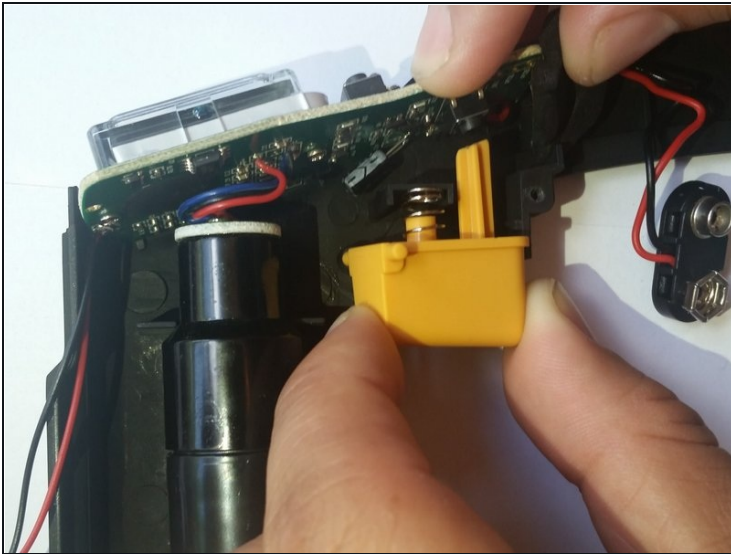
⚠ Be careful not to lose any components on the inside.

Step 8



- Realign the buttons with the button terminals.
- Red terminal to red button.
- Orange terminal to orange button.
- Yellow terminal to yellow button.

Step 9 — Etekcity Lasergrip 1080 Trigger Replacement

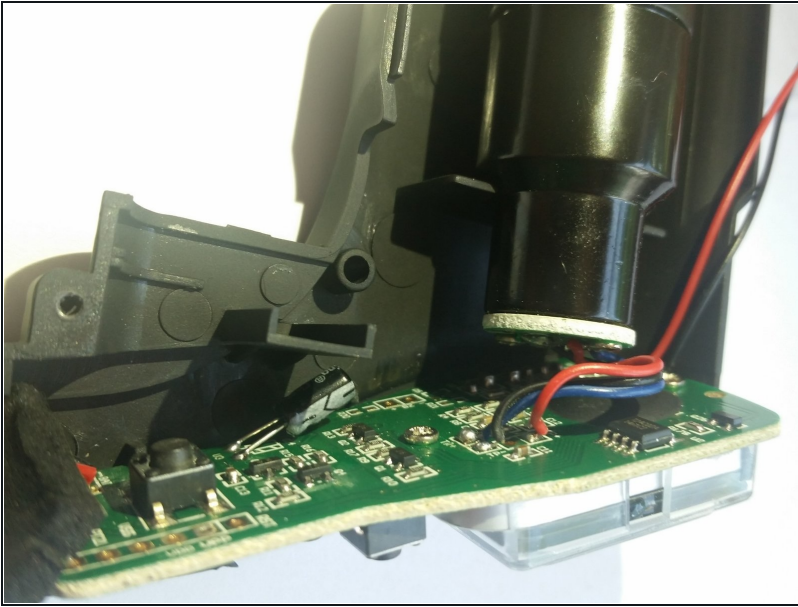


- Carefully pull the trigger out.

⚠ The trigger is spring loaded, so be careful that you do not lose the spring as you pull the trigger out.

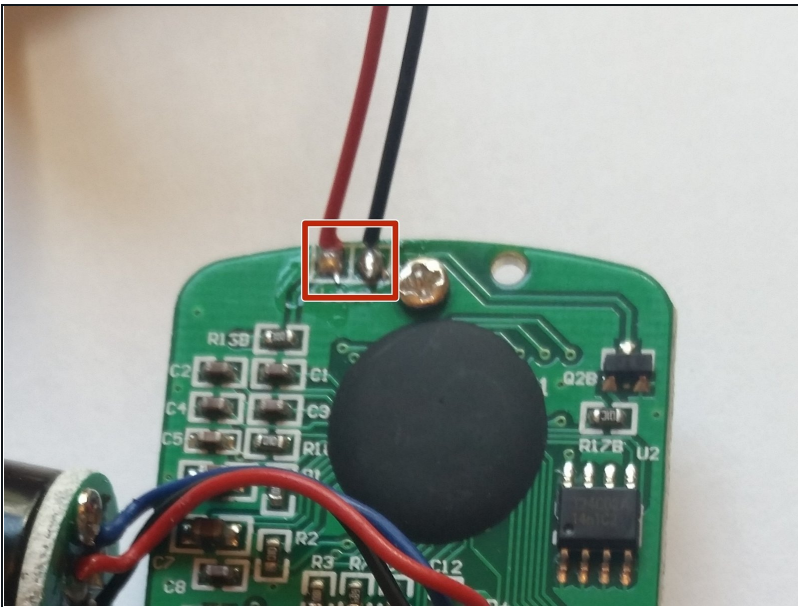
- ① To put the trigger back in, align the peg with the hole in the handle and align the shaft with the button terminal.

Step 10 — Laser



- Pull the motherboard out of its slot in the device.

Step 11



- Use a soldering iron to melt the solder that holds the wires for the laser to the motherboard.

⚠ Soldering irons are hot and should only be handled by those who know what they are doing and are wearing proper safety equipment. There is a link to a soldering guide in the Troubleshooting section of the device page.

To reassemble your device, follow these instructions in reverse order.