



How to Repair the Sparker on a Merlion Mini Torch

Learn how to adjust the sparker on a Merlion mini butane torch.

Written By: Neel Kogali



INTRODUCTION

Is your torch full of butane but not lighting? Your sparker is probably misaligned from your butane tube. Use this guide to see how to fix it!

TOOLS:

- [Screwdriver](#) (1)
 - [Slip Joint Pliers](#) (1)
 - [Butane](#) (1)
-

Step 1 — How to Repair the Sparker on a Merlion Mini Torch



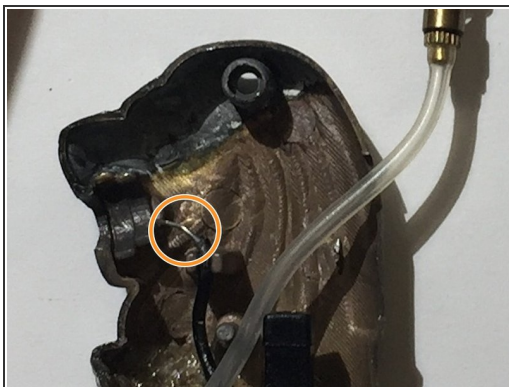
- Use the screwdriver to remove all the 1.2 mm Phillips #1 countersunk screws from the torch.

Step 2



- Open up the torch.
- Set aside the empty side of the torch.

Step 3



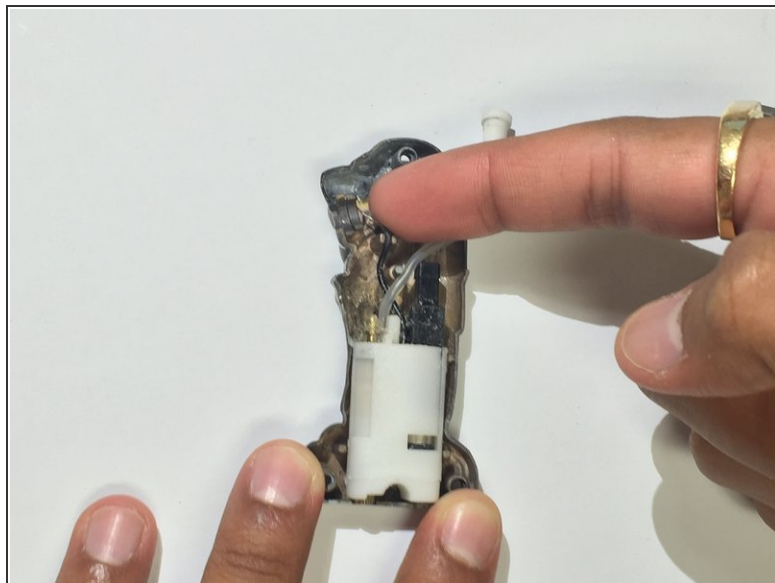
- Pull the handle down as if you were to use the torch.
- You will see one of the parts inside spark. This is the sparker.
- Now gently remove the handle and set it aside.

Step 4



- Grab your pliers and GENTLY tug the sparker towards the Merlion head until it is extended about a centimeter.

Step 5



- Gently bend the sparker until it is positioned near the opening of the Merlion's mouth.

Step 6



- Grab the tube and gently bend it so it faces the opening of the Merlion's mouth.
- Put the handle back on the torch.

Step 7



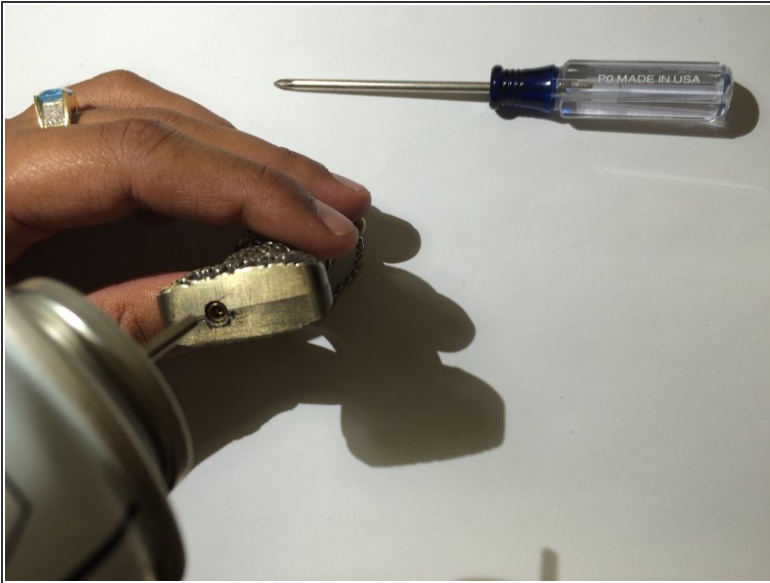
- Take the empty half of the torch and place it over the other half.

Step 8



- Use the screwdriver to put the screws back in the torch.

Step 9



- Hold the torch upside down and position the butane above the torch's hole.
- Gently press down for five seconds.

Congrats! Now you can use your Merlion torch again.